

Via Palma

Palma surpasses one million mark



One of the Mediterranean's leading base ports, Palma de Mallorca, surpassed one million cruise passengers in 2007, the first time ever. The milestone was reached in November and by year-end a total of 1,048,495 passengers had passed through the port's cruise berths. These numbers represented a 13.7% increase compared to 2006.

53% of passengers calling at Palma were turnarounds but the 496,542 arriving on transit calls represented an increase of 17% on the previous year. Many cruise passengers visiting Palma choose to take a tour of the city where highlights include a stop at the impressive La Seu Cathedral with its numerous spires. Located in the old Portela Quarter, Spain's second largest Gothic-style Cathedral dates back to the

13th century. Famous Catalan architect, Gaudi, also added his touch to the interior.

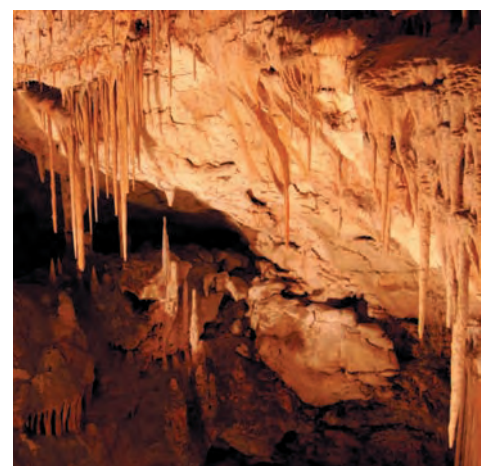
Great views of the town and harbour can be experienced from the ramparts of Bellver Castle, which also houses an armoury and archaeology museum.

Looking further afield, trips centred on nature include the spectacular Drach Caves, filled with stalactites and stalagmites plus the largest underground lake in the world, or a walk or cycle tour in La Reserva De Puig De Galatzo, a lush region with clear springs and cascading waterfalls.

In total, the five Balearic Island cruise ports received 1.2m passengers last year with Mahon and Ibiza handling the bulk of the remainder traffic.

In 2008, 501 ship calls are scheduled for Palma where the Balearic Islands Port Authority unveiled plans to construct new

berthing at the Western Docks, involving extending the existing quay by 50mtr to create two additional berthing facilities of 380mtr. The cost of the project is around €23m.



Drach Caves



Via Malaga

New terminal underway

Malaga is the hometown of Picasso and the port's location, very close to the historic city centre, allows passengers to make the most of a day call. A trip to the Alcazaba Arabic Fortress and Gibralfaro Castle which lie at the top of a mountain, provides opportunities to overlook the most beautiful sights of the city.

Whilst the house where Picasso was born is open to the public and is a popular

stopping off point, there are several short trips in the surrounding area of great interest: Ronda is one of Andalucía's loveliest towns, spectacularly situated, steeped in history and reputedly Ernest Hemingway's favourite Spanish city; Nerja, with its amazing caves, exclusive Puerto Banus, or the white village of Mijas, are just a sample of the beauty of this area.

A stone's throw from Malaga is Granada where the extraordinary Alhambra is located, the Mosque in Cordoba and the Giralda tower in Seville. Also not far from the Costa del Sol capital are Gibraltar and Morocco.

Recently Malaga inaugurated its new South Berth and first phase of a passenger terminal to handle turn-around operations.

With a depth of 12 meters, the South Berth represents an investment of €11.2m. In its first phase, the terminal will



Terminal - operated by Cruceros Malaga S.A.

encompass 8,900 square meters with a lounge, luggage area, offices and other facilities, at an investment of €15.7m.

The terminal will be operated by Cruceros Malaga S.A., a company formed by the Port of Malaga and Creuers del Port de Barcelona.

Malaga handled 240 cruise calls in 2007, including 39 during November, the busiest month, and 25 in December, up from 11 the year before. Passenger count for the full-year was 292,567, a 31% increase over 2006.

Homeporting operations more than doubled last year, with 12,842 passengers starting or ending their cruise in the city, compared to just over 4,000 in 2006.



Alhambra Palace - accessible from Malaga

Via Palamos

Costa Brava attractions



Palamos on Spain's Costa Brava provides access to a range of tourist attractions with landscapes combining sea and mountain, history and culture and multiple sports activities and gastronomic variety.

The town is set in one of the deepest and largest natural bays in the area and has two quays for handling cruise ships.

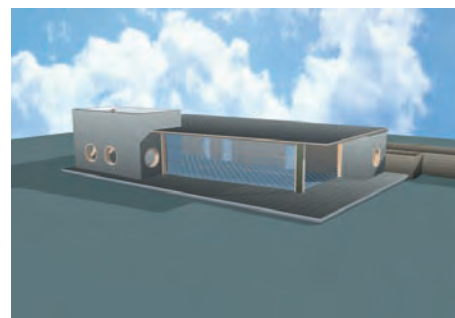
The work of Salvador Dali, the brilliant

surrealist artist, is closely linked to the landscapes of his birthplace, Costa Brava, so passengers looking for a Dali experience can visit the Dali Museum in Figueres, the city where he was born (80 minutes drive).

Other tourism options are the city of Girona and its Jewish quarter (50 minutes away), the medieval sites of Pals and Peratallada or the Iberian settlement in Ullastret (30 minutes away), the Nou Camp stadium, home of Barcelona

Football Club in Barcelona (80 minutes away) or the new incoming Thyssen art collection in Sant Feliu de Guixols, just ten minutes away.

Palamos has invested in a new passenger terminal which is now complete and is set to receive 22 cruise calls this year including new visitors Le Ponant, Braemar and Silver Whisper.



New terminal recently completed



Via Ceuta

Relax and stay

A visit to the Maritime Park (Parque Marítimo del Mediterraneo) in Ceuta provides plentiful opportunities to swim, walk or relax at this 70,000sq mtr leisure complex situated close to the sea. It offers a combination of swimming pools, waterfalls, lakes and gardens plus a yachting harbour.

This year around 30 ships are scheduled to call at Ceuta, the Spanish city located on the northern tip of the African coast – the meeting point of two continents, two seas and four cultures – Christian, Muslim, Hindu and Jewish.

In 2007, 8,000 passengers experienced the sights of Ceuta and its surroundings including the remains of the 14th century Arab walls and fortress, and Ceuta Cathedral, built on the site of a 6th century Christian temple. Although neoclassic in

appearance, its construction dates back to the 15th century.

Ceuta has a new cruise terminal for ships with a capacity of between 1,500 to 2,000 passengers. Situated

just 100 mtr from the city centre it offers excellent duty free shopping. Hebridean Spirit, Norwegian Dream, Saga Rose and The World are amongst calls scheduled for the coming year.



Via Valencia

Sporting success

Valencia is still basking in the glory of hosting the 32nd Americas Cup which finished in a victory last July for the Alinghi team which out-maneuvred the Emirates Team New Zealand 5-2.

That victory marked the end of an exciting four year event. This year Valencia hopes to host the race between

Alinghi and BMW Oracle (pending on a decision by the US courts) when the Americas Cup adventure starts again.

This August the streets of



Valencia city and port area will become the focus of another major sporting event when the Formula 1 Grand Prix comes to town.

The port is also set for a record year with 175 calls scheduled to bring 200,000 passengers,

representing an 11% increase in numbers.

Work on extending the northern area of Valencia port starts this year. Included in the plans are around 1.5km of new berthing dedicated to handling cruise ships.

Also under preparation is the master plan for cruise operations in a new area of the port (in addition to the Americas Cup basin and the city area). Details will be published in the second half of this year.

Via The Azores

Atlantic gem

Ponta Delgada in the volcanic archipelago of the Azores, is a vibrant town, which received 57 cruise calls last year as the islands benefit from the growing number of ships transiting the Atlantic.

This June sees the opening of Ponta Delgada's new Gateways of the Sea

located along the town's waterfront, including a new cruise terminal with dedicated 380mtr long quay with 11mtr depth alongside. Passengers will embark/disembark via a gangway connected to the terminal



New Gateways of the Sea

building which will be located a few hundred yards from the city centre and a pleasant promenade. Parking for excursion buses will be above the terminal.

The Maritime Terminal (1,200sq mtr) and commercial building (5,300 sq mtr) is

designed to serve both inter-island traffic and visiting cruise ships. It will also house the Sea Pavillion – a grand plaza with café, terrace and restaurant overlooking the sea. Cultural events will take place on a nearby stage whilst swimming pools filled with Atlantic sea water can be safely and fully enjoyed. A new marina providing berthing for 470 yachts will also be located along the waterfront.

Each of the nine islands that make up the Azores archipelago offer their own unique character some with luxuriant vegetation and astonishing lakes, others with black carved rocks, others filled with history. Also worth a visit are the islands of Terceira, a UNESCO World Heritage site for the architecture of its main town and Faial, the Atlantic meeting point for yachts from all over the world.



The gates to the city of Ponta Delgada

Via Lisbon

New iPod guided tour

A new and interesting way to discover historic Lisbon is on foot guided by an iPod commentary.

With lightweight audio players and a detailed map this programme offers an easy walking tour of the ancient cobbled-stoned streets and historic sights of Lisbon's captivating Baixa and Bairro Alto districts. The iPod can be worn comfortably around your neck as one explores the city, listening via earpieces or head-set, to a detailed description of the site and its history.

There are more than 25 points of interest programmed into the iPod from the liveliness of the Bairro Alto district to the beauty and solumn majesty of the Carmo Cathedral and its museum your stroll through Lisbon with your Discovery

Walks player will be the highlight of a visit to this vibrant and historic city. The duration of the tour can be as short or as long as you wish to make it.

In 2008 Lisbon expects to welcome 285 calls and around 360,000 passengers. This figure represents an 11% increase in

calls and 18% rise in passengers.

Special welcomes are planned by the Port Authority for 18 first time callers slated to arrive including new ships: MSC Poesia and Fantasia, P&O's Ventura, Carnival Splendor, Independence of the Seas and AIDAbella.



Carmo Cathedral ruins, just one of the sights of Lisbon



Via Bari

Architectural delights

Bari is located in Puglia, Italy's heel and is surrounded by the Adriatic on three sides. Bari's rich past – embracing Byzantine, Norman, Swabian, Arabic, Angevin and Pisan culture – is reflected in the city's architecture, especially the remarkable twelfth-century basilica, Saint Nicholas founded just a ten-minute walk away from the port.

The basilica was built between 1087 and 1197, to safeguard the relics of St. Nicholas, which were stolen by sailors from the saint's original shrine in Turkey. A new church was built to shelter Nicholas' remains in 1197.

The church, which is square in appearance, has two towers framing the façade and could be mistaken for a castle. In fact it has been used several times as a

castle during its history. The interior has a nave and two aisles, divided by granite columns. There are precious mosaic pavements in the crypt and presbytery.

Bari celebrates San Nicola on May 8, which is the day on which the bones arrived in the city.

Also in the Old Town, is the huge Swabian castle built by the all-conquering crusader, Frederic II.

Food is a must too, so visitors should try the typical Pugliese dish orecchiette con le rape – pasta with 'little ears' served with vegetables and anchovies.

144 calls are expected in 2008 on 13 different ships including maiden visits by



Swabian castle, Bari

Silver Whisper, Seabourn Spirit, Azamara Journey, Azamara Quest, Deutschland and Le Ponant.

The port is planning two new 300mtr long cruise berths at Darsena di Ponente alongside an area of 70,000sq mtr which will be equipped with cruise and ferry facilities.

Via Livorno

Wine lovers paradise

Wine lovers should head straight for the Italian port of Livorno – the gateway to Tuscany and its surrounding countryside. New excursions this year focus on trips to the Bolgheri and Castagneto Carducci wineries, producing world-famous brands like Cabernet Sauvignon, Merlot and Syrah.

A trip to Bolgheri passes through groves of ancient olive trees and the hilltop villages of Roccastrada and Montemassi – with a chance to see spectacular views of the Mediterranean Sea – before reaching Bolgheri. Enjoy a visit to the cellars and the tasting of great wines plus local food.

609 ships are expected to call at Livorno this year, including new ships Carnival Splendor, Queen Victoria, Norwegian Jade and Independence of the Seas.

Priority berthing is offered for megaships this summer at the 500mtr long Molo Italia, a commercial quay located just 15 minutes by bus from

the city centre.

With a 90mtr width quay there will be plenty of room for buses to come alongside and a temporary shelter will also be erected. There will be a shuttle service bus to the city centre and

passengers will also have the opportunity to buy a day pass allowing use of all public transport for €5 each.

Under the current three-year plan (2007– 2009), the Port Authority intends to invest €2m on re-building the bridge near the Medici Fortress to allow new passenger access from the port to the town centre.



Bolgheri vineyard



Via Volos

In the footsteps of Ancient Greece

Volos in Greece is anticipating a boost in cruise tourism as it prepares to host the Mediterranean Games 2013, when at least 14,000 athletes and their families and visitors are expected to arrive in the city. Volos is no stranger to such activities as it was one of the Greek cities to host sporting events during the 2002 Olympic Games, which took place in Athens.



The Argo – due to sail in 2008

Volos has a well-developed hinterland with 200,000 inhabitants and is also the key

point of departure linking mainland Greece with the Sporades Islands (Skiathos, Skopelos, Alonnisos), Evoia Mytilene and eastern Aegean and Cyclades islands.

The port and city of Volos lie close to the oldest, most important and fully excavated settlements from the Neolithic era in Europe: Dimini and Sesclos. It also lies over traces of three important ancient cities: Iolkos, Pagases and Dimitriada, whilst closeby is the ancient city of Feres.

According to Greek mythology Iolkos was the starting point of the Argonauts expedition to retake the Golden Fleece from Kolchida (where the port of Batumi, Georgia is located today). Last year, a replica of the Argonaut's ship Argo was constructed. This summer the ship will leave Volos and follow the same route taken by Jason and his followers to Batumi.



Via Gibraltar

Makeover for visitor attractions

Recent refurbishment work carried out at one of Gibraltar's premier attractions, St Michael's Cave, includes improvements to the lighting system in order to highlight the darker recesses of the cave. This has meant that visitors can better enjoy the spectacle of the whole cave, including the lower chambers.

During the summer, the Gibraltar Tourist Board re-opened the Moorish castle after extensive renovation and refurbishment that has completely transformed this medieval monument.

In 2008 refurbishment has started of the Great Siege Tunnels, with new displays and interactive stands that will further enhance this integral part of the Gibraltar experience.

These projects cover three of the main visitor attractions in Gibraltar but all cruise passengers will continue to get a warm welcome from the famous Rock Apes.

Nine new ships will debut at the Rock this year ranging in size from sailing yacht Le Levant, through to Royal Caribbean

International's new 'Independence of the Seas' which at 158,000gt will be the largest ship operating in Europe this summer.

In total, 230 calls are already booked, which surpasses last year's calls which numbered 227 and 275,933 passengers.

The extension to the existing terminal is due to commence during the course of this year at a cost of £4m.



Gibraltar Moorish Castle – re-opened following refurbishment



New arts and crafts

The city of Sochi is Russia's only subtropical resort located among the most picturesque surroundings – the Caucasus Mountains. The city recently gained a new title: capital of the Olympic Games 2014.

In 2007, Sochi Sea Port received more

than 37 calls including The Iris, Spirit of Adventure, Nautica, Crystal Serenity, Europa, Boudicca and many others. More than 20,000 passengers enjoyed the sights of Sochi and scenic beauty of the Black Sea Coast and Caucasus Mountains.

40 cruise ships are visiting in 2008 including newcomers Deutschland, Artemis,

Explorer II, Rotterdam and Island Sky.

Sochi port will undergo major expansion in the next six years including three new cruise berths with up to 8.8mtr depth, for ships up to 311mtr long. The existing harbour will be dedicated to yachts and small vessels.

Besides popular tours, such as The Tree of Friendship and Botanical Gardens, Sochi Highlights, Tea Plantations and Russian Tea Ceremony and Stalin's Dacha, organised by local tour agent Sochi Holidays, a new excursion, City Museums, is being offered for passengers looking for a cultural experience.

This new attraction includes visiting the most eminent city museums (Art Museum and Barsov's Dacha) – Valeria Barsova was the Russian opera prima donna at the Bolshoi Theatre in Moscow at the beginning of the 20th century.

Sochi Holidays is also planning to launch a Caucasian crafts attraction this season. Last year it started a shore excursions' service course for students of Sochi State University to prepare a team of guides for the future.



A taste of Romania



cruises, Costa Marina, Nautica and Calypso.

This year the river cruise berth is being upgraded to provide a better customs area.

2008 sees the completion of restoration works on the Tropaeum Traiani (Triumphal Monument) which has been rebuilt and restored. Built between 106 –109 in honour of Emperor Trajan,

this 39mtr-high circular memorial is an authentic source of information on Romanian ancient history. The Tropaeum Traiani Museum houses the original parts of the monument depicting battle scenes between the Romans and the Dacians and a review of the victorious armies cheering their emperor, statues and inscriptions, and earthenware and coins.

Other places of interest are St.

Andrew's Hermitage – a small church in the cave where the Apostle who first bought Christianity to the Romanians lived; Histria, situated 30 miles north of Constantza and founded in 656 BC and Sinoe a lagoon of salty water on the Danube Delta where colonizers from Greek Ionia's city of Miletus, set up a trading post backed by abundant fisheries and by the fertile hinterland.

From here there was easy access

from Histria north across the Danube to Dacia's raw materials of silver and gold – evidenced in the city's fine coinage. The museum here displays a unique collection of highly-prized archaeological discoveries from the area.



Constantza has an equal share of ocean going cruise callers and river cruise ships, the latter which arrive via a 60km canal linking the port to the Danube River. This year the Port Authority is expecting to see a 15-20% increase on the 75 cruise calls of 2007 (40 ocean ships and 35 river). Amongst callers last year were Asuka II on a world



Via Sinop

History and eco-tourism

To learn more about Sinop new visitors should proceed to the castle, the Temple of Serapis, the old prison and Prevane Merdesseh to get a feel of its past.

The Castle founded in 2000 BC by the local Gaska tribe was restored and enlarged during the Ottoman, the Seljukies, Byzantium, Roman, Greek and Pontus periods. The castle walls are 3mtr thick, standing 30-40mtr high and cornered by well-preserved bastions.

Balatlar Church was constructed during the Byzantium period but the rectangular Temple of Serapis was only discovered in 1951. Whilst the west and east walls of the Church are ruined the preserved north and south walls are one of the best examples of stone and brick handwork of the period. Inside there are frescoes of Christ, the

Virgin Mary and the Apostles.

Sinop presents a variety of opportunities for eco-tourism shorex including pristine coasts, expansive and dense forests, natural caves, streams and lakes, wildlife and sport activities.

42km from Sinop are the Efelek Tatlica waterfalls consisting of 28 waterfalls spread out over 2km in a narrow and wooded valley.

Sinop is expecting 11 calls this year including two planned stops by Azamara Quest.



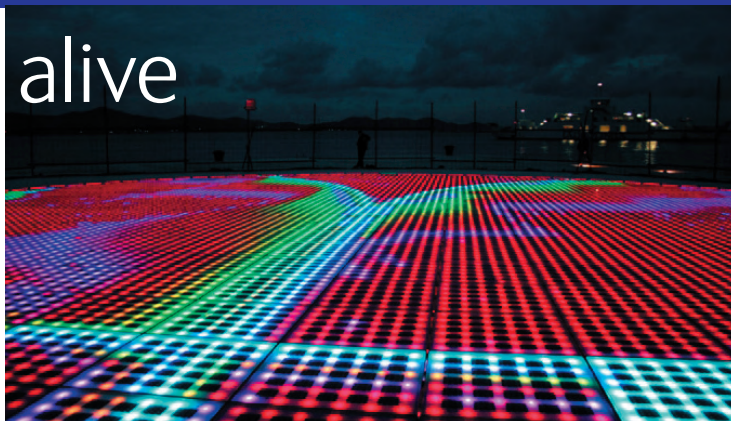
Via Zadar

Lights alive

Passengers taking a stroll along Croatian port of Zadar this summer will be able to enjoy a new tourist attraction – the

Monument to the Sun. Located close to the Sea Organ, the world's first pipe organ operated by the motion of the sea pushing air through a series of pipes, this latest modern circular structure comes to life at night as the rhythm of the waves lights it up. Together with the sea organ, they create a sound and light show alongside the waterfront.

These two contemporary pieces of art offset by the preserved city walls of the



Roman Forum, packed with monuments, illustrate the two faces of Zadar, which continues its meteoric rise as a cruise destination with over 100 calls expected in 2008, up from 88 last year. New ships calling this summer are Emerald, Dalmacija and Island Sky. Work on a new port project at Gazenica (2 miles from the old town) is scheduled to start soon and will be finished by 2011.

Worth a visit is the Archeological Museum founded in 1832 and the second oldest museum in this part of Europe.

MedCruise Members

■ Alanya	■ Moroccan ports
■ Alicante	■ Naples
■ Almeria	■ Palamos
■ Balearic Islands	■ Palermo
■ Barcelona	■ Pescara
■ Bari	■ Piraeus
■ Batumi	■ Portoferraio
■ Cagliari	■ Portuguese ports
■ Cartagena	■ Ravenna
■ Castellon	■ Rijeka
■ Catania	■ Sete
■ Ceuta	■ Sevastopol
■ Civitavecchia	■ Sibenik
■ Constantza	■ Sinop
■ Cyprus ports	■ Sochi
■ Dubrovnik, Korcula	■ Split
■ Egyptian ports	■ Tarragona
■ French Riviera ports	■ Toulon, St Tropez
■ Gibraltar	■ Trieste
■ Koper	■ Tunis
■ La Spezia	■ Valencia
■ Lattakia	■ Valletta
■ Livorno	■ Venice
■ Malaga	■ Volos
■ Messina	■ Zadar
■ Monaco	

Contacts

MedCruise

José Campos
Secretary General
Portal de la Pau, 6
08039 Barcelona, Spain
Tel: +34 607 87 87 50
Fax: +34 93 306 88 17
secretariat@medcruise.com
presidency@medcruise.com



MEDCRUISE

THE ASSOCIATION
OF MEDITERRANEAN
CRUISE PORTS

MedCruise News

Editor: Mary Bond
Editorial Assistant: Libby Isted
Production Editor: Fiona Hockey
Seatrade Communications Ltd
Tel: +44 1206 545121
Fax: +44 1206 545190
mary@seatrade-global.com

Seatrade

Published by Seatrade Communications Ltd