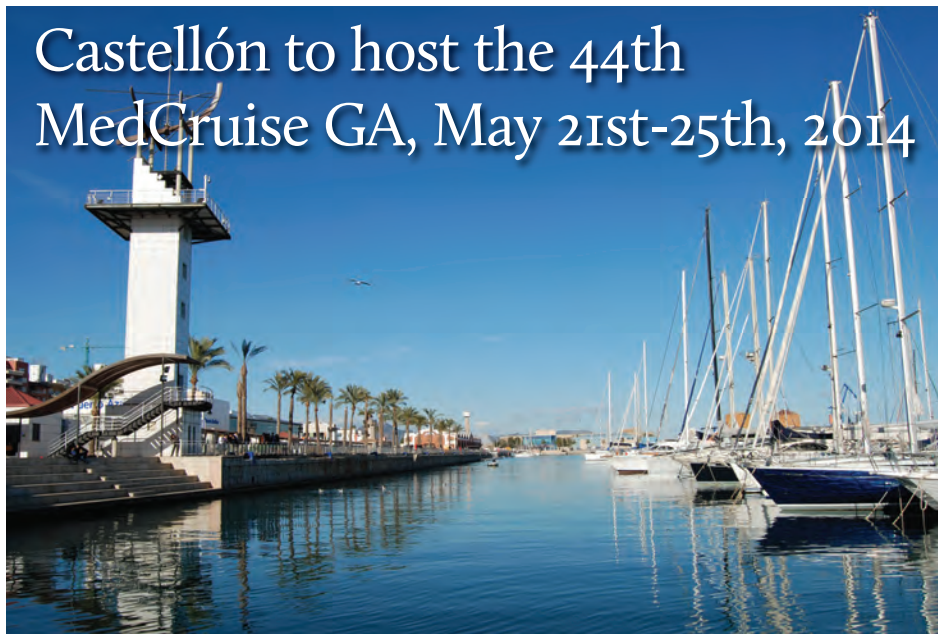


# MEDCRUISE NEWS

BRINGING THE MED TOGETHER

March 2014 | Issue 43

## Castellón to host the 44th MedCruise GA, May 21st-25th, 2014



Spanish port city of Castellón is the venue for the MedCruise 44th General Assembly taking place between May 21st and 25th, 2014.

Participants from member ports, associate members, cruise line executives, media and local tourism, city and port officials will meet to review and discuss latest issues related to the work of the Association and focus on the challenges and opportunities of cruising in the Med.

Visitors will have the chance to see Castellón and its surrounding tourist attractions and enjoy the warm hospitality of the port-city, which was founded in the mid-13th century.

The dynamic and expanding port of Castellón, situated in El Grao district, has evolved from a small fishing village to offer a

lively district with modern hotels, residential buildings, pubs, recreational areas and many famous restaurants.

Being a mountainous province washed by the sea, Castellón has all the ingredients for a rich and varied cuisine, where rice, seafood, meat and fresh fruit and vegetables are the table of the day.

Places of interest nearby include the medieval town and walled fortress of Morella with its awe-inspiring vista of centuries-old battlements and a castle situated over 1,000mtr above sea level; Peniscola – perched on an impressive rocky outcrop linked to the mainland by a strip of sand – a city steeped in history and its castle is the second most visited monument in Spain after Alhambra in Granada; and the San Josep Caves with the longest underwater navigable river in Europe.

## Come and see us at Stand #1059



## The Art of Travelling

MedCruise produced in 2013 three videos demonstrating the attractions of some of the most beautiful cruise destinations in the world.

You might like to download all three versions of the video via the MedCruise website ([www.medcruise.com](http://www.medcruise.com)) or watch them at the MedCruise stand (#1059) at Cruise Shipping Miami 2014, taking place at the Miami Beach Convention Centre from March 10-13th 2014.

‘MedCruise continues to effectively advance cruise activities in the Med. Promoting the attractiveness of cruise ports in the Mediterranean and its adjoining seas, disseminating best practices, and advancing policy initiatives that facilitate adjustments of our port and associate members to contemporary challenges, are the core of MedCruise work for the coming year.



The scope is to ease the transformation of the growth that the region experienced in the recent past to a sustainable one.

It is of course a pleasure that the spirit of all those involved in the association is to expand further the constructive work already done – as is the expanding membership of our association.

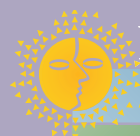
The challenges remain several. The platforms that we offer for collaboration of our members and discussions with cruise lines, and the developing collaborative working spirit between MedCruise and CLIA Europe, are clear indications that MedCruise will continue to have an effect on the developments in the sector.

Heading to Cruise Shipping Miami 2014, on behalf of our members, I invite you to the MedCruise stand 1059 to meet and discuss with representatives of some of the most beautiful ports to cruise in the world, and share knowledge and experiences of the best cruise hosting practices.’

**Stavros Hatzakos, MedCruise President**

### IN THIS ISSUE

Association News/People	1-3
CASTELLÓN TO HOST THE 44TH MEDCRUISE GA	1
BARCELONA TO WELCOME SEATRADE MED 2014	2
LATEST STATISTICS ON MEDITERRANEAN CRUISE ACTIVITY	2
PROMOTING SUSTAINABLE CRUISING	3
EU STRATEGY MEETING FOR ADRIATIC AND IONIAN REGION	3
MEDCRUISE DIARY 2013	3
Port facilities & Destination	4-15



**MEDCRUISE**

THE ASSOCIATION  
OF MEDITERRANEAN  
CRUISE PORTS

# Barcelona prepares to welcome Seatrade Med 2014



The largest gathering of cruise ship executives in the region will travel to Barcelona, Spain from 16th-18th September 2014 for the Seatrade Med Cruise Convention, where purchasers and decision-makers from the world's leading cruise lines will be among those visiting the exhibition to meet with new and existing business partners.

MedCruise is the principal supporter and sponsor of the Seatrade Med Cruise Convention, which incorporates a high-level industry conference, a major exhibition, a training seminar for travel agents offered by CLIA and an exceptional social programme. Seatrade Med 2014 will be the tenth edition of this major regional cruise event and is the largest public gathering of MedCruise member ports and associates.

These are exciting times for the Port of Barcelona, which has experienced

impressive growth over the past 20 years, bringing in 25m cruise passengers to the city during this period. This further cements the economic importance of cruise to the Mediterranean. The Port Authority has announced that 2013 cruise traffic totaled 2,599,232, up 7.9% from 2012 and just a whisker short of its all-time record of 2,642,493 in 2011. Of the 2013 total, 1,092,946 were in transit and 1,506,286 embarked or disembarked. Cruise

vessel calls in 2013 were 834, an 8.3% gain over 2012.

The future of the Mediterranean as a top cruise destination continues to look very healthy, according to latest statistics compiled by MedCruise, the total of passengers that cruised in 2013 via MedCruise ports reached 26.9 million, a rise of 3.4% growth comparing to the respective data of 2012 (see separate story below).

Looking at the wider picture, out of the top ten European destination countries in terms of passenger visits for 2012, the top three were from the Mediterranean, accounting for 55% of all European passenger visits.

Seatrade Med is a UBM event organised in partnership with Seatrade. For more information about this year's event in Barcelona, please visit [cruiseshippingevents.com/med](http://cruiseshippingevents.com/med).

**MedCruise contact Carla Salvado:**  
[carla.salvado@portdebarcelona.cat](mailto:carla.salvado@portdebarcelona.cat)



MedCruise stand at Seatrade Med 2012

## Latest statistics on Mediterranean cruise activity

In March 2014, MedCruise published a detailed scientific report providing a point of reference and a mean to understand the past, present and future of the Mediterranean cruise industry.

The MedCruise Statistical Report 2014 contains a statistical analysis of the cruise activities that took place in the Mediterranean region and its adjoining seas in 2013. The report provides also an analysis of developments over the last five years (2013-2009), based on the annual data of the MedCruise port members.

Based on a detailed analysis of the data provided by 67 ports that are estimated to represent well over 80% of the total cruise passengers and vessels that cruised the Mediterranean sea the last five years, the MedCruise Statistical Report 2014 provides a valuable source of representative

information about the size of the cruise market in the Mediterranean region, its evolution over the last year, and the trends that the region experienced during the past five years.

The total of passengers that cruised in 2013

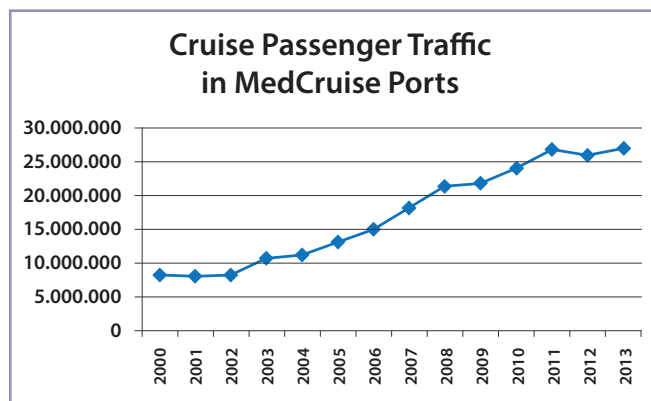
via MedCruise ports reached 26.9 million pax, a rise of 3.4% growth comparing to the respective data of 2012.

Through this fifth edition of MedCruise Statistics, MedCruise provides a reference tool, not only for all MedCruise members, but also for the entire cruise industry.

The findings of the report will be revealed by the President of MedCruise Mr. Stavros Hatzakos at a special event to be held at Cruise Shipping Miami 2014 on Wednesday, March 12th, 2014, 12:00 (Stand 1059).

For more information on the MedCruise Statistical Report 2014, please contact:

**Thanos Pallis**  
([thanos.pallis@medcruise.com](mailto:thanos.pallis@medcruise.com))  
or **Kleopatra Arapi**  
([kleopatra.arapi@medcruise.com](mailto:kleopatra.arapi@medcruise.com))



# Promoting sustainable cruising

Leading research on waste disposal governance in Med cruise ports

MedCruise continues to lead efforts to better manage the recycling and reuse of garbage on board cruise ships and at the EU ports that are members of the Association. It does so acting as the leader of a key action of the EU funded project on 'Sustainable Cruise' (LIFE + Project), the theme of which is the waste disposal governance. The project coordinator is Costa Cruises.

MedCruise's scope in the context of the project is to map waste disposal facilities and regulatory framework of European ports and involve port authorities in setting up an integrated waste governance system.

More specifically, the MedCruise secretariat is at the stage of collecting and synthesising the national regulatory framework concerning waste and emissions management: the most relevant European regulations have been collected and analysed. By the end of the Spring, the implementation/compliance process of the European legislation at each MedCruise EU country will be ready to be delivered at the European Commission but also presented at the 44th MedCruise General Assembly at Castellon, Spain.

The statistical analysis of member ports' waste management facilities is also at advanced stage with this analysis also

expected to conclude in Spring and presented at the MedCruise GA.

In the coming period, the mapping and database development will result in a visual application of the Port Waste Reception Facilities of the MedCruise Ports and their distances will be functionally integrated at the MedCruise website ([www.medcruise.com](http://www.medcruise.com)) providing an interactive and useful tool to all parties involved in cruise activities, promoting sustainable cruise growth in the Mediterranean and its adjoining seas.

For more information about the life project contact:

**Thanos Pallis** ([Thanos.pallis@medcruise.com](mailto:Thanos.pallis@medcruise.com))  
or **Aimilia Papachristou**  
([Aimilia.papachristou@medcruise.com](mailto:Aimilia.papachristou@medcruise.com))



## EU strategy meeting for Adriatic and Ionian Region

MedCruise participated at the Stakeholder Conference on the EU Strategy for the Adriatic and Ionian Region, jointly organised by the European Commission and the Hellenic Presidency of the Council of the European Union, and took place at in Athens, Greece, on 6th-7th February 2014.

The European Commission and the participating countries are proceeding to draw up a EU Strategy for the Adriatic and Ionian Region. The new Strategy is expected to integrate the Maritime Strategy for the Adriatic and Ionian Seas, adopted by the Commission on 30th November 2012.

The EU Strategy for the Adriatic and Ionian Region will cover eight countries: four EU Member States (Croatia, Greece, Italy, Slovenia) and four non-EU countries (Albania, Bosnia and Herzegovina, Montenegro, Serbia). It focuses on areas of regional mutual interest; these are based around four main 'pillars':

1. Driving innovative maritime and marine growth,
2. Connecting the Region,
3. Preserving, protecting, and improving the quality of the environment, and
4. Increasing regional attractiveness

MedCruise, represented by Aimilia Papachristou, participated during the

second day of the conference in the thematic workshop of the forth pillar of the strategy, under the theme 'Increasing regional attractiveness'.

The Conference promoted a debate with the participants on the future challenges that can be tackled following a macro-regional approach. This will support the preparation of the future Communication and Action Plan of the Strategy, which the Commission is due to present before the end of 2014.

For CLIA Europe & MedCruise Joint Statement on Coastal and Maritime Tourism for Blue Growth contact:

**Thanos Pallis** ([thanos.pallis@medcruise.com](mailto:thanos.pallis@medcruise.com))  
or **Aimilia Papachristou**  
([aimilia.papachristou@medcruise.com](mailto:aimilia.papachristou@medcruise.com))



## MedCruise will be participating at the following events worldwide in 2014

**44th MedCruise General Assembly**  
**21-25 May, 2014, Castellon**



MedCruise to hold their next General Assembly in Castellon, situated on Spain's Costa del Azahar.

**Seatrade Med Cruise Convention**  
**16-18 September, 2014, Barcelona**



MedCruise is a sponsor of Seatrade Med, the Mediterranean's largest gathering of cruise lines, ports and destinations and cruise community.

**4th International Conference Black Sea Cruise 2014, 25-27 September, 2014, Yalta**



The event organised by The Odessa Seaport Authority and State Enterprise Ukrainian Seaports Authority focusing on the challenges and opportunities for Black Sea cruising.

**2nd GreenPort Congress 2014, 15-17 October 2014, Barcelona**



In its 9th year, the GreenPort Congress provides decision makers from the port community with a meeting place to learn and discuss latest sustainable development and environmental practice.

# Alanya

**A**lanya continues to invest in improving its facilities. The area around the cruise port has been greatly enhanced, featuring waterfront footpaths, marine artefacts and an attractive and educational Maritime Museum in the ancient Dockyard.

Alanya has long been regarded as a role model in Turkey for disability accessibility. The first accessible beach in Turkey opened in 2013 on the Kleopatra Beach at Damlataş, near the accessible park and recreation centre (pictured). As a result of these efforts, Alanya

became the first Associate Member in Turkey of the European Network for Accessible Tourism (ENAT).

Alanya continues to work to increase accessibility to historical sites and other amenities, and to increase its accessible hotel accommodation.

Other improvements include many new cycle lanes and better bus services.

**MedCruise contact Haluk Sayman:**  
[haluk@alanyacruiseport.com](mailto:haluk@alanyacruiseport.com)



# Ceuta



**C**euta offers cruise visitors endless possibilities. One can enjoy the city's exceptional climate, its hospitable people and the beauty of its landscape with a panoramic view of the Gibraltar Strait and a shopping area where goods are duty free.

Ceuta is divided into two distinct zones adjacent to one another. To the east near its main peninsular most of the inhabitants are Spanish and everything feels Spanish but as soon as you head west, close to the border with

Morocco, you begin to see minarets of mosques and it feels Moroccan.

Ceuta offers a gateway to the Magreb, an efficient bridge to visit Moroccan towns just a few kilometres away. The cruise berth is situated 100mtr from the city centre and can take ships over 220mtr. This year 10 calls are expected.

**MedCruise contact Victor Jimenez:**  
[victor@puertodeceuta.com](mailto:victor@puertodeceuta.com)



# Azores

**M**aiden calls by Fram, Le Boreal, Royal Princess, Thomson Dream and AIDAvita sees the Azores welcoming 103 ships this year, up from 92 vessels in 2013.

Dolphin and whale watching tours are extremely popular for cruise passengers visiting the Azores which are one of the world's largest whale sanctuaries. More than 20 different types of cetaceans can be spotted in the waters surrounding the nine islands of the Azores.

The biggest challenge facing the islands is having cruise ships calling in the summer months which is traditionally the cruise low season. Andre Velho Cabral, Ports of Azores, cruise manager says the islands are fully committed in reversing those slow months tempting some cruise lines to offer an Azorean summer season.

**MedCruise contact Andre Velho Cabral:**  
[amoura@portosdosacores.pt](mailto:amoura@portosdosacores.pt)

# Balearic Islands

**T**he Balearic Islands are expecting 701 calls and 1.57m passengers in 2014. At Palma, an extension of the north berthing line adjoining the west breakwater (total length 445mtr) is being undertaken 2014/15 while medium term investments include extension of the esplanade at the North Poniente Quay and reorganisation of the Poniente Area passenger terminals. At Mahon, the Poniente berth is being extended by 250mtr.

**MedCruise contact Francisca Leal Albons:**  
[fleal@portsdebalears.com](mailto:fleal@portsdebalears.com)



## Corfu



480 ships and 744,651 passengers visited Corfu Port in 2013 representing a slight decline of 1% in terms of calls but a 13.6% rise in passenger numbers compared with the previous season.

The increase is due to larger ships sailing in the Med, a fact that also led to more than 100,000 visitors per month for three consecutive months.

So far, 380 bookings have been confirmed for 2014, including inaugural calls from Costa Diadema, Disney Magic, Royal Princess, Mein Schiff 3 and Serenade of the Seas.

Despite the many interesting places that Corfu offers, the two constantly most popular excursions are Palaiokastritsa bay - according to Homer the place where Odysseus disembarked and met Nausicaa for the first time - along with the monastery of Palaiokastritsa built in 1225, and the Achilleion Palace of Empress Sissy of Austria and later of Kaiser Wilhelm II of Germany.

A 430mtr extension of the cruise pier is due to be completed by April 2014 bringing the number of dedicated cruise berths to seven enabling the handling of three mega ships, two medium and two smaller vessels simultaneously. The cost of the work is €18.4m.

Plans for a new homeporting terminal are in the final stages with construction due to start in 2014-2015.

**MedCruise contact Sotiris Vlachos:**  
[sotvlachos@yahoo.gr](mailto:sotvlachos@yahoo.gr)



## Cyprus



Cyprus Ports Authority offers three cruise ports at Lemesos, Larnaka and Paphos which collectively received 255 calls last year and 272,000 passengers. 55 calls originated and ended their itineraries at Lemesos accounting for about 50,000 cruisers. Cruise business in 2014 is expected to be around the same levels.

At Lemesos port, construction works for the new passenger terminal, are estimated to be completed this year. The facility, covering 6,800sq mtr is fully compliant with EU safety and security requirements and includes one departure hall, two arrival halls, separate area for luggage handling and receipt, a restaurant

on the 1st floor and parking lot.

The port is also investing in a new 60 tons tug boat and a new pilot boat.

Cyprus Ports Authority has also finalised the redeveloping and the redesigning of the Old Lemesos port, thus creating a new cultural, historical and commercial centre within the old Lemesos town which includes restaurants, shops, a large square and cultural and events areas.

Efforts are also being made to enhance Paphos port for cruise ship handling character.

**MedCruise contact Eftychia Christodoulou:**  
[echristod@cpa.gov.cy](mailto:echristod@cpa.gov.cy)

## Constantza

Constantza is hosting the SCF Black Sea Tall Ships Regatta between May 24-27, 2014. Organised by Sail Training International UK, in co-operation with Navigator Yacht Club, Romania, the regatta consist of two races for sailing vessels: the first is Varna to Norossiysk and the second and final race is Sochi to Constantza and will include 40 sailing vessels, a crew parade, awards ceremony, concerts, fireworks and a flotilla sail together. The port's passenger

terminal will host the event allocating around 1,100mtr of berthing to the sailing vessels from Romania, Ukraine, Bulgaria, Russia, Turkey, Pakistan, Malta, Italy, Spain, Sweden and UK.

Constantza is expecting 70 cruise ships in 2014, up from 69 in 2013 and 52 in 2012. This year there are plans to allocate a 300mtr long second berth for accommodating cruise ships.

**MedCruise contact Teodor Patrichi:**  
[tpatrichi@constantza-port.ro](mailto:tpatrichi@constantza-port.ro)



SCF Black Sea Tall Ships Regatta organising committee

# Global Ports

A consortium with majority stake held by Global Ports Holding has been selected as the preferred bidder to grow business at the Lisbon Cruise Terminal with a view to doubling the current 550,000 passengers annually in the medium term.

The consortium comprises Global Ports Holding(40%), Royal Caribbean Cruises Ltd(20%), Creuers del Port de Barcelona(10%). and Grupo Sousa – Investimentos SGPS (30%). The 35-year contract will include the construction and the operation of a landmark cruise terminal, on a public-service concession basis.

The new terminal is expected to provide the port with an estimated 1.8m passengers while supporting the growth of turnaround business.



Kuşadası

Construction of the new Lisbon Cruise Terminal, estimated to cost €24m started in early 2014 with expected completion by the end of 2015.

Arpak Demircan, deputy ceo of GPH, said 'having successfully integrated our three ports in Turkey, we are focusing on inorganic growth having acquired 62% of the Port of Bar in Montenegro and 43% of Creuers del Port de Barcelona, through Barcelona Port Investments in partnership with Royal Caribbean Cruises Ltd.

'Now, joining forces again with Royal Caribbean, we are adding the Lisbon cruise terminal to our expanding portfolio of international assets.'

With the addition of Lisbon to the existing portfolio of Barcelona, Malaga, Singapore, Kuşadası, Bodrum and Antalya Ports, GPH's port facilities will welcome 10m cruise passengers worldwide.

**MedCruise contact Mr. Aziz Güngör:**  
azizg@egeports.com



Bodrum

# Dubrovnik



Dubrovnik Port Authority is expecting around 100 different cruise ships to call this year including over 10 new visiting vessels: MSC Preziosa, Ocean Dream, Seabourn Sojourn, Regal Princess, Mein Schiff 3, Horizon, Funchal, Louis Aura, Lisboa, Azores and Costa Diadema.

New tour for visitors in 2014 is the historic fort of Sokol Kula in the Konavle mountains. The famous Sokol-kula (meaning Hawk Tower) dates back to the 15th century and was a frontier post and stronghold of the Dubrovnik Republic.

In 2013, over one million passengers (1,086,877) visited Dubrovnik on 692 calls. This year the Port Authority is in the process of preparing an international tender for the construction of port infrastructure including a cruise and passenger terminal.

**MedCruise contact Kristina Laptalo:**  
dpa.kristina@portdubrovnik.hr

# French Riviera

The French Riviera ports of Cannes, Antibes, Golfe Juan, Nice and Villefranche sur Mer are expecting 604,703 passengers from 374 ship visits this year, including a return to Cannes by Norwegian Cruise Line, a first time visit to Antibes by Oceania Cruises and calls from the newly named former Windstar ship.

During Cruise Shipping Miami 2014, a new 'French Riviera flavours' brochure featuring destination themed menus will be

presented. From these new menus some new products can be created together with the shore excursion agents and FRCC local partners to promote the destination.

Updated information on all the FRCC cruise ports and destinations are available on smartphone and ipad apps, as well as on the website [www.frcc.fr](http://www.frcc.fr).

**MedCruise contact Anne-Sophie Peyran:**  
anne-sophie.peyran@cote-azur.cci.fr



Cannes



Nice



Villefranche sur Mer



## Huelva

More than a hundred participants attended the first Huelva Cruise Forum, which took place in January and organized by Port of Huelva and the Provincial Board of Tourism Council.

Manuela Paz, president of Huelva Port Authority, highlighted the port's potential as a cruise destination and outlined its two cruise berths - one close to the city and the other located five minutes from the center.

Ignacio Caraballo, president of the council and tourist board said, 'rising cruise traffic in the Mediterranean and the Atlantic is an opportunity for the province of Huelva we cannot pass up.' He added that the tourist authority has set a goal to increase its cruise business.

Discussion topics centred on how to prepare the port, service providers and local tourism in order to satisfy the new cruiser.

New to the cruise map, Huelva's aim is to reach 20 cruise calls a year by 2020.

The day ended with a panel discussion with representatives from MSC Cruises, Princess Cruises and Norwegian Cruise Line where the importance of creating a destination brand to promote to the cruise lines and passengers was aired. The consensus was Huelva's links to the discovery of America as the point of departure for Christopher Columbus' historic voyages are key in that process.

**MedCruise contact Capt J. Manuel Vega:**  
mvega@puertohuelva.com



## Heraklion



New 'Infocloud' system

Port of Heraklion is anticipating a 24% increase in ship calls this year in a season that started earlier than usual with the arrival of MSC Fantasia on January 11 which will give a significant boost to the local market, especially during the winter.

During 2014, cruise passengers visiting Heraklion Port will have the opportunity to understand more about Crete's local flora, through a new project called 'Herbs'. The project includes the planting of various species of Crete's endemic plants and herbs along the route to the exit of the port. Visitors are stimulated to use both their senses to touch and smell the leaves and the fruits of each plant.

Next to each plant, two informative signs gives information about the characteristics of the tree/plant, its history, its use in cooking, medicine & cosmetics, and its impact on the economic growth and the tradition of the

inhabitants. The second sign gives a local recipe using the tree or plant in a meal, beverage or dessert. The project was implemented by the Port Authority, in collaboration with the Municipality of Heraklion and Crete's Chef's Club who created the recipes.

This is part of the 'customer experience enhancement program' project, which also includes the installation of two interactive systems at the Cruise Terminal. The first system, called 'Infocloud', offers information on a variety of topics relating Crete (mythology, culture, etc.). The second system is a kinesthetic game which is played on an interactive wall by one or more players, and uses body movements to 'collect' traditional Cretan products.

**MedCruise contact Ioannis Bras:**  
ceo@portheraklion.gr

## Igoumenitsa

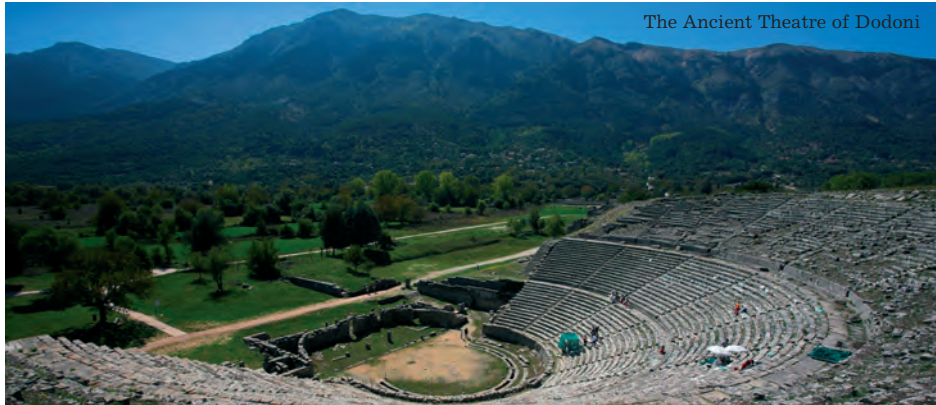
The number one attraction accessible from Igoumenitsa is the UNESCO World Heritage site of Meteora, one of the world's most remarkable monastic clusters. Meteora literally means 'suspended in mid air' which is probably the best way to describe this sublime merging of geological drama and religious spirituality. The imposing rocks of Meteora were formed about 60 million years ago and evidence dates human presence there as far back as 50,000 years, Christian hermitage probably started around the 12th century, but it was not until the 14th century that these precariously perched monasteries

began to emerge. Of the six monasteries still active today, Great Meteoron and Varlaam are the two largest and most visited.

Other attractions closer to the port are the charming lake city of Ioannina 67km away plus nearby archaeological site of Dodoni and the traditional market town of Metsovo (112km).

In 2014, La Belle De L'Adriatique adds Igoumenitsa in its calendar and Seabourn Spirit confirms calls for a second year.

**MedCruise contact Konstantinos Grinias:**  
kgrinias@olig.gr



The Ancient Theatre of Dodoni

## La Spezia



Cruise calls and passenger numbers are growing at La Spezia with 493,000 cruisers expected to visit on 180 ships in 2014, up 130% compared to last year when the port welcomed 214,000 passengers.

Thanks to its strategic geographical position La Spezia is achieving excellent results, playing a very important role as an emerging cruise port in the Med and providing access to destinations both in Liguria, Tuscany and Emilia such as Cinque Terre, Portovenere, Lerici, Sarzana, Pisa, Florence and La Spezia city itself.

The port authority is building a new cruise pier at Paita wharf that will accommodate two large vessels simultaneously.

Lines calling at the Port of La Spezia include Costa Crociere, Royal Caribbean International, MSC Cruises, Disney, Ibero Cruises, AIDA Cruises, Pullmantur and Regent Seven Seas.

**MedCruise contact Fabrizio Bugliani:**  
fabrizio.bugliani@porto.laspezia.it

## Madeira

Madeira is anticipating a rise in cruise traffic in 2014 with 322 ships booked, including 12 maiden calls and 483,112 passengers.

Last year main cruise port Funchal recorded 288 visits and Porto Santo three ships.

Madeira Ports is investing €17.8m over the next two years in a new 330mtr long cruise berth on the Funchal city centre side and opposite the main cruise terminal building.

The new facility should be ready to accept ships in the high season of 2015/16.

**MedCruise contact Patricia Bairaada:**  
comercial@apram.pt



## Koper



A new shore excursion from Koper is a visit to the must-see picturesque village of Padna situated on the top of a hill offering a splendid view of the Slovenian coasts. Local inhabitants are opening their homes to show and explain their traditions, and prepare delicacies following family recipes and using organic ingredients produced in the countryside and hand-made souvenirs.

Koper is expecting 52 calls in 2014 including

two new Costa visitors: Costa Diadema and Costa Classica and a maiden visit from Emerald Princess of Princess Cruises.

The port is planning an investment of €2m in a small terminal building for handling 1,800 homeport passengers and more than 3,500 passengers in transit.

**MedCruise contact Bojan Babic:**  
bojan.babic@luka-kp.si

## Lisbon



Lisbon is expecting another relevant year for cruise activity in 2014.

TUI Cruises' new ship delivering in May this year will visit Lisbon on its maiden voyage. Other new callers in 2014 include, Azores, Thomson Majesty, Seabourn Quest, Louis Aura, Horizon and Sovereign.

A new tour for the body and mind involves a one hour drive to Praia da Mata at Costa da Caparica for a surf lesson and yoga workshop.

The Port Authority of Lisbon has

announced a consortium involving Global Ports Holding(40%), Royal Caribbean Cruises Ltd(20%), Creuers del Port de Barcelona(10%). and Grupo Sousa – Investimentos SGPS (30%) as the preferred bidder for a 35-year concession including the construction and the operation of a landmark cruise terminal, on a public-service concession basis. The award will be made by the end of the first quarter of 2014.

**MedCruise contact Ana Lourenco:**  
alourenco@portodelisboa.pt

# Livorno



Following the inauguration last November of a priority cruise terminal at Alto Fondale on pier 46/47, the port now offers 18,000sq mtr dedicated to cruise ships in transit or performing partial turnarounds. The €4m investment is the first part of a €8m projected spend for restructuring the entire 4,500sq mtr of warehousing.

A Three Year Plan approved at the end of last year calls for the expansion of the passenger port to include the whole of Alto Fondale and Orlando Piers, providing three

dedicated cruise berths for ships over 300mtr in length; this expansion is subject to the building of infrastructure in progress to relocate the commercial berths so cargo and passenger traffic is separated. This project is expected to be completed in the next few years.

350 ships and around 730,000 passengers are expected to visit Livorno this year.

**MedCruise contact Serena Veroni:**  
s.veroni@portolivorno2000.it

# Messina

Last year Messina had a record year welcoming over half a million passengers on 228 calls.

A trio of new shore excursions for 2014 centre on food and drink and history.

San Placido Calonerio, the route of wine and oil takes passengers to the Benedictine Monastery with its vineyards from which Faro, Mamertino and Malvasia D.O.C. wines originate and its oil mills producing prestigious Valdemone olive oil. Wine tasting is an essential part of this tour.

Swordfish fishing onboard a Felucca traditional boat highlights the never-ending

rivalry between man and nature and contest to catch this prized fish, followed by lunch onboard prepared with the catch of the day.

In Milazzo, is the sanctuary of San Francisco di Paola the only one in Sicily built by the saint in 1465 and the ancient castle of Frederick II with its fortified town. From Cape Milazzo one can admire the Aeolian Islands.

A public tender for a design competition for a new cruise terminal will be held this year.

**MedCruise contact Cristiana Laura:**  
segreteria@porto.messina.it



Milazzo Castle

# Odessa

Odessa is preparing for a bumper year of cruise business with 153 cruise ship calls booked at the end of January, compared to 148 calls in 2013.

New ships heading for the Black Sea port include Azores, Balmoral, Insignia, Isabella 1, Lisboa, MSC Orchestra, Ocean Dream, Ocean Princess, Saga Pearl II, Seabourn Pride and Thomson Celebration.

There are plans afoot to reconstruct the concert and exhibition hall which is at the passenger terminal. For tourists convenience and ease of access for coaches and cars, there are plans to also redevelop the adjacent road junction in front of the passenger terminal building.

**MedCruise contact Elvira Leschinskaya:**  
elvira.leschinskaya@gmail.com



# Sete



The port of Sète is the natural gateway to five UNESCO World Heritage sites: Carcassonne, Canal du Midi, Pont du Gard, Causses and Cevennes, Gellone Abbey in St Guilhem.

Besides these marquee UNESCO sites many other first class tour options are available.

The most popular full and half day tours include cosmopolitan and cultural Montpellier, Roman Nîmes, the Medieval fortress of Aigues Mortes, colorful Pézenas and the increasingly popular Languedoc vineyards.

Sète is also the gateway to Cathar country, one of the 21 destinations on the 2014 National Geographic "Best of the World" list.

A project is under study to allow berthing of larger cruise ships (up to 350mtr and more): a dedicated cruise berth inside the port, alongside dolphins, sheltered by the breakwater, totally secure. It will be ready for the 2016 cruise season.

**MedCruise contact Catherine Lafon:**  
lafon.catherine@portsuddefrance-sete.fr

## Piraeus

In July 2013, an approval from Directorate-General for Competition at the European Commission was provided for the financing of two new berths for cruise ships of more than 300mtr long. The total project's cost is estimated at €35m and the approved aid totals €13.9m.

The project involves the construction of docks of 3,000mtr length with alongside draft of 18mtr and additional land spaces of 140,000sq mtr. A breakwater of 1,100mtr will also be constructed. The project is planned for completion by 2017 by which a call for tenders will be publicised for the concession of an operator for the relevant passenger terminal that will support the new infrastructure project.



Last summer saw Piraeus inaugurate the new expansion of the Themistocles Cruise Terminal and the next day Norwegian Jade tied alongside. The new terminal provides state-of-the-art facilities for embark/disembark and transit passengers and can easily handle the new generation cruise ships already serving the market.

Last year over 1.3m passengers visited Piraeus on 771 cruise calls. So far in 2014 572 ships are expected at the East mediterranean hub including newcomers Regal Princess, MSC Symfonia and AIDA Sol.

**MedCruise contact Tsitouras Theodoros:**  
[tsitourast@olp.gr](mailto:tsitourast@olp.gr)



## Palermo

Costa Cruises is increasing its calls in Palermo this year up from 34 to 61 and contributing to the port's expected overall total of 201 ship visits in 2014.

The current passenger terminal is undergoing a major refurbishment to improve services and enhance passenger and ship handling.

The outside of the building, dating back to the 1940s, will be preserved whilst the interior

will be modernized to improve passenger comfort and increase the terminal's efficiency. The interior design which includes a wide public space for departures also features restaurants, cafes, shopping area, ticket offices and public safety services. The new terminal, will be ready in 2015 and costing around €38m.

**MedCruise contact Daniela Mezzatesta:**  
[promotion@portpalermo.it](mailto:promotion@portpalermo.it)



## Ravenna

Ravenna, which boasts eight UNESCO World Heritage sites, is the sole cruise port in the Emilia Romagna region: a land with a soul. This region blends the highest excellences of the Italian territory, from the ancient mosaics to the seaside resorts, from the Motorvalley to the culinary heritage, and much more.

In 2014 the port is anticipating 40 cruise ships and about 45,000 passengers down from 2013's 74 calls bringing over 97,000 cruisers to the city, however there will be several newcomers in 2014, including the newest Regal Princess, who will be the

largest ship ever calling at Ravenna. Also calling are Costa Classica, Grand Celebration, Seven Seas Mariner, Insignia, and Braemar.

Details for a proposed new cruise terminal will be ready in late 2014.

Ravenna is also closely watching the situation regarding the ban of larger vessels in Venice which may influence cruise line itinerary planners in finding appealing new routes in the North-East Med/Adriatic Sea.

**MedCruise contact Anna D'Imporzano:**  
[a.dimporzano@ravennatp.it](mailto:a.dimporzano@ravennatp.it)



# Rijeka



If you like hiking, walking, flying, sailing, riding or diving....enjoying an experience in the air, on the land, in or under the water, Kvarner County accessible via the Port of Rijeka offers numerous possibilities. Kvarner's natural diversity ensures a wide range of adrenaline-filled activities. You can explore the mysterious world of caves, sail, raft or canoe on fast mountain rivers, surf at sea or test your limits on a race track.

Port of Rijeka Authority, Kvarner County and Rijeka Tourism Offices and City of Rijeka are working closely to establish the

city, the port, and surrounding area as an important cultural, historical and leisure destination for cruise tourism.

There is an increased amount of cruise ships calling in 2014.

Modernisation of the port is a primary goal of Rijeka Gateway Project, financed by the World Bank loan. One of the several project components is conversion of the port area into a new urban and tourist areas and nautical centre. Total investments in so called 'Port City Interface' is expected between €300-500m. According to the master

plan there is a possibility of constructing a new pier for ships more than 300mtr length with draught of 10mtr.

Visit us at Booth #1031 at Seatrade Cruise Shipping Miami

**MedCruise contact Snijezana Papes:**  
**marketing.ri@portauthority.hr**



# Sibenik

This year traffic is going to be similar to 2013 with three new visitors booked: Tere Moana, Le Soleal and Ocean Majesty.

Sibenik region offers two national parks, 11 medieval fortifications, 230 cultural monuments and 600 archaeological sites.

The extension and reconfiguration of the passenger wharves at Vrulje Quay started in March 2011 and were divided into two phases. The first phase, completed in 2013 concentrated on international traffic, and the second phase for domestic trade should be

completed by July 2014. The port is able to accommodate two cruise ships at the same time, one of up to 260mtr and one up to 200mtr.

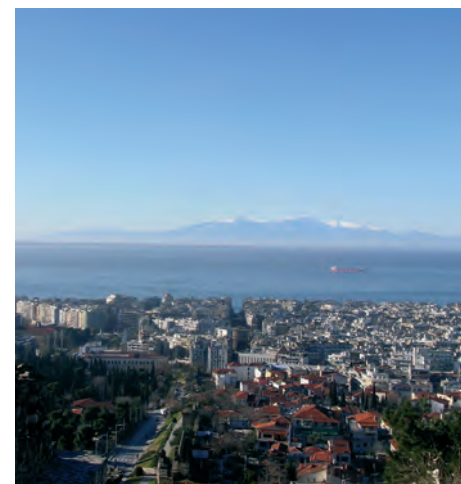
A new Maritime Passenger Terminal Building is planned in the vicinity of the city centre. The Building is located parallel to the waterfront and there is a large covered but naturally ventilated car park beside the building for use by passengers and the city.

**MedCruise contact Gordana Mrcela:**  
**info@portauthority-sibenik.hr**

# Thessaloniki

Thessaloniki is hoping to welcome 22 cruise ships in 2014 and around 18,500 passengers, including regular callers AIDA and Louis Cruises. The Port Authority is proceeding with upgrade work at the passenger terminal where WiFi access has been fitted. Cruise-related port costs were reduced in the last few years and remain unchanged until 2015 whilst a discount policy based on calls will be launched for this year.

**MedCruise contact George Vangelas:**  
**gvangelas@thpa.gr**



# Ports of Tenerife Sochi

In 2013 Ports of Tenerife received 520 calls and 794,151 passengers. The 2014 forecast is 527 cruise calls and 844,085 cruise passengers.

The Port Authority of Santa Cruz de Tenerife has developed a new cruise terminal, the H Cruise Terminal, in order to accommodate increasing demand for homeporting operations.

MSC Cruises has been using the new cruise terminal since November 2013 for MSC Armonia's weekly turnaround calls winter 2013/14. The itinerary visits the Canary and Madeira Islands combined with Morocco.

The new terminal provides a 1,000 sq mtr check-in area with five double desks, rest



area and access for disabled and handicapped guests. Facilities also include a 336 sq mtr covered luggage area, a hand luggage scanner service, passenger security arch, CCTV and Port Police control according to ISPS regulations.

Ports of Tenerife is also developing another cruise terminal near to the city centre which will be operational for the 2015-2016 season. This will be 8,473sq mtr including a 3,300sq mtr luggage area, 50 check in desks, lounge area, restrooms, mechanical ramps, gangway, scanners and security arches, Port Police control according to ISPS, a crew internet corner, a bus and taxi parking area. The berthing line is 395mtr with 10mtr draught alongside.

Elsewhere La Gomera cruise pier is being lengthened for 2014-2015 season.

**MedCruise contact Nayra Hernandez:**  
[nayra@puertosdetenerife.org](mailto:nayra@puertosdetenerife.org)



Russia's newest and the Black Sea's biggest cruise terminal in Sochi has capacity to handle 1,200 passengers an hour. The new \$500m infrastructure opened ahead of the Winter Olympics, which took place in the port city and surrounding mountains last month.

In anticipation of increased ship visits the Black Sea resort of Sochi has been undergoing major redevelopment in the past five years including the construction of a 730mtr long cruise quay capable of handling two 300mtr ships plus a 165mtr ro/ro-ferry berth, informed Alexander Belkin, head of cruise development at Port of Sochi.

Norwegian Jade, Grand Holiday, Louis Olympia and Thomson Spirit were among

ships used as floating hotels during the Games. In 2013, Sochi had 56 cruise calls and 75 are expected in 2014.

A major attraction at the new port is a 5,000 sq mtr shopping centre representing various types of marine accessories for purchase from a sail needle to a motorboat.

A multifunctional exhibition centre and congress-hall will also incorporate a Port Museum. The open space between the two buildings will become a stage for numerous fairs and exhibitions which take place in Sochi every year.

**MedCruise contact Alexander Belkin:**  
[belkin@sochi.com](mailto:belkin@sochi.com)

## Souda-Chania

During 2013 the port of Souda received 47 cruise ships and 124,205 passengers. A similar number of calls and passengers are expected this year.

Souda Port is located at the west side of Crete and a few hours sailing distance from Piraeus, Santorini, Mykonos, Rhodes, Heraklion and Limassol.

The distance from the port to the nearby town of Chania is 6km. The Old town of Chania is a crossroad of religions and civilizations. Passengers can see many places of cultural interest such as the old harbour, museums, churches, monasteries, old forts and mosques.

Visitors can also taste the famous Cretan cuisine based on local virgin olive oil and other

local products like vegetables, cheese and wine.

Popular excursions are also the archaeological site of the ancient city of Aptera and the traditional villages of Apokoronas. The region is well known for the beauty of its beaches such as Platanias and Agia Marina.

Last year Souda Port temporarily used a small station to welcome cruise passengers. For the current year there will also be an expanded outdoor area of 11,500sq mtr and there are plans for a brand new terminal in the future.

**MedCruise contact Stella Manioudaki:**  
[stelman@ltnx.gr](mailto:stelman@ltnx.gr)



# Split



**P**ort of Split expects 231 ships this year including Louis Aura, Marina, Nautica, Riviera, Lisboa, Azores and Variety Voyager. This roster compares with 225 ships and 189,107 passengers welcomed in 2013.

The Port of Split Rehabilitation Project, co-financed by an EBRD loan of €38.8m, aims to increase the capacity of the port by constructing two passenger berths for receiving ferry and cruise ships. The planned location for the new berths, for ships up to 320mtr and 270mtr respectively is

immediately south of the port's main breakwater. The berths are to be completed during 2016 and the Port of Split Authority expects to start handling ships there in 2017.

The biggest challenge, says the Port Authority, is to keep providing a top quality service to ships in order that Split and the Adriatic region are a must-visit year-round cruise destination.

**MedCruise contact Josko Berket Bakota:**  
jberket@portsplit.com

# Tarragona

**T**he region of Catalonia known as the Costa Daurada, and its capital, Tarragona, located about 100km south of Barcelona, is hoping to attract more cruise business.

Over 2,000 years ago, the area had already been discovered by the emperors of the Roman Empire as a holiday destination for its warm climate, its rich cuisine, and its natural beauty. This area, with its rich past and current day splendour, is launching its own brand to the international cruise community at Cruise Shipping Miami 2014.

Tarragona Cruise Port is the result of a new business strategy which aims to make the port city a real alternative for the millions of passengers who cruise the Mediterranean every year, visiting well-known and often saturated tourist destinations.

'Surprising and new', is how Tarragona Cruise Port will be presented to the international market. It is a destination which combines all of the virtues of the Mediterranean lifestyle (fantastic wineries and rich cuisine, sunshine and spotless golden beaches, tradition, culture, historic monuments, modernist architecture, leisure and relaxation, nature, sports, and all manner of outdoor activities), and is home to a modern, welcoming, enterprising, active and cosmopolitan populace who offer tourists unique and unforgettable experiences.

Tarragona's excellently preserved archaeological treasures from the times of ancient Roman Tarraco – declared UNESCO World Heritage – and the possibility of visiting

perfectly preserved medieval monasteries which are still active today illustrates perfectly how ancient and avant-garde can live side by side.

The area is home to 7 world class golf courses, open all year, and in 2013 hosted the premier international event for the sport (the IGTm). Tarragona also boasts one of Europe's leading theme parks, PortAventura. And, of course, don't forget the fantastic cuisine; the area is home to the highest concentration of wine and cava production in Catalonia.

**MedCruise contact:**  
cruises@porttarragona.cat



# Toulon

**A** new cruise building will be located at La Seyne by the end of 2015 and a new dedicated cruise pier is under study in downtown Toulon to be ready by 2016/17, if the project gets the green light. 2014 sees Toulon itself welcoming 125 calls and 300,000 passengers whilst the entire Var Provence network hopes to attract 285 ships and 400,000 passengers including new lines Cunard and Costa in Toulon.

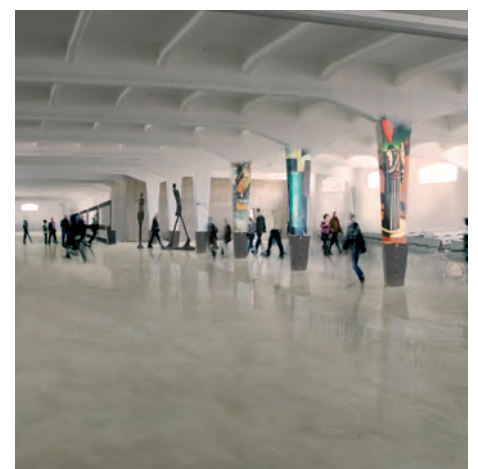
**MedCruise contact Delphine Beudin:**  
delphine.beudin@var.cci.fr



# Venice

**I**ntestments of over €65m have been made or budgeted by Venezia Terminal Passeggeri between 1997 and 2014 in order to improve the efficiency of cruise ship handling. Latest addition is the newly refurbished building 109/110 a former port warehouse transformed into a 14,000sq mtr terminal ready spring 2014 and enabling the port to handle ten ships at one time. Meanwhile restrictions on ships over 96,000gt transiting in front of St Mark's Sq to/from the Maritime Station (effective from January 1st 2015) could affect Venice's cruise business unless an alternative routing solution is found quickly.

**MedCruise contact Francesco Drigo:**  
f.drigo@vtp.it



# Tunisian Ports

**L**a Goulette has 253 calls booked expecting to bring 600,000 passengers to the Tunisian port this year.

This rise in traffic follows a good last season which saw Goulette Shipping Cruise, operator of the cruise terminal, welcome almost 515,000 passengers onboard 202 ships from regular callers MSC, Pullmantur, Croisière de France, AIDA Cruises and Holland America Line.

Norwegian Cruise Line was a first time visitor in 2013 whilst Costa Cruises returned to the port after a two year absence.

The port and terminal operator spent time last year focussing on improving the passenger service experience in port including rethinking the signage inside the terminal to help visitors finding their way around more easily, distributing tourist information on arrival, training terminal staff in communication skills and safety and conducting passenger satisfaction surveys in order to continually improve our offering.

**MedCruise contact Lotfi El Ajmi:**  
[lotfi.ajmi@ommp.nat.tn](mailto:lotfi.ajmi@ommp.nat.tn)



# Valletta

**I**n 2013, Valletta Cruise Port hosted more than 477,000 passengers on 277 calls. New visitors booked to visit Malta this year include Mein Schiff 3, Costa Diadema, MSC Preziosa, Hamburg, Louis Aura and Emerald Princess amongst others.

Investments continue through the Valletta harbour area to ensure that the service offer remains fresh. Cooperation between the various stakeholders, most notably Valletta Cruise Port's teamwork with agents, Transport Malta, the Malta Tourism Authority, the Malta International Airport and the Maltese Government, ensures a guaranteed response time combined with competitive pricing.

More recently Valletta Cruise Port has commissioned a study to analyse the

contribution of the cruise industry to the revenue of the Maltese Government and to the Maltese economy. This study is currently being concluded.

Laguna Marina, a small 37-berth marina in the Valletta Waterfront lagoon, was inaugurated in summer 2013. It is located close to the cruise quays. Other real estate developments in the pipeline include the restoration of the Old Power House, Malta's first power station, which is located just opposite the quays, as well as the refit of a number of historic vaults overlooking the port to be used as office space.

**MedCruise contact John Portelli:**  
[jportelli@vallettacruiseport.com](mailto:jportelli@vallettacruiseport.com)



# Zadar

**Z**adar, is an historical city in the heart of the Croatian coast, surrounded by many beautiful villages, islands and five national parks.

This is very important year for Port of Zadar – infrastructure works on a new ferry and cruise port are almost complete. In July 2014, the first cruise ship will be welcomed at Zadar-Gazenica and, after that, the relocation of local ferry traffic from the old port to new facility.



The relocation of the ferry port to Gazenica (3.5 km south of the city of Zadar) is providing additional berths which can accommodate larger ferries and cruise ships as well as Ro-Ro vessels. Draft depths in the new ferry port will range from 6mtr at the islands' terminal to 13mtr at the cruise berths of the international terminal.

The new port is directly connected to the new motorway network with a direct and rapid access to Zadar Airport, Zagreb, the rest of Croatia and central Europe through the road and motorway networks.

The cost of the project is estimated at about €150m, financed by the Government of Croatia with loans from EIB and KfW.

Zadar received about 69 cruise calls and 35,000 passengers in 2013 (about 70% more passengers than in 2012), and expects about 75 calls and 50,000 passengers in 2014 and more than 100,000 cruise passengers in 2015.

**MedCruise contact Djoni Stambuk:**  
[dstambuk@port-authority-zadar.hr](mailto:dstambuk@port-authority-zadar.hr)



# News in brief

**P**&O Cruises' Ventura and Costa Cruises' Costa neoRomantica and neoRiviera will visit **Genoa** for the first time in 2014. So far, 200 ships are lined up to call at the Italian port bringing 880,000 passengers of which 600,000 will visit the city in turnarounds and 280,000 on transit stops a figure which is down on 2013 when Genoa received a record 1m plus cruise tourists.

**MedCruise contact Edoardo Monzani:**  
monzani@smge.it



**Kotor** is investing €750,000 in a new passenger terminal which will be ready in the first quarter of this year. 360 cruise ships are due to visit the Montenegro port in 2014, bringing around 308,000 passengers compared with 387 ships and almost 318,000 passengers in 2013. A new exclusive shorex this year is a gastronomic and historic tour on an open-top mini bus.

**MedCruise contact Mladen Lucic:**  
mladen.lucic@luckauprava.gov.me



**Mersin** is seeing a steady increase in cruise calls with four visiting last year with the most popular tourist attractions at the southern Turkish port being Sant Paul's Well and Church in Tarsus; and Cappadocia.

**MedCruise contact Ayham Adel Abiad:**  
aabiad@mersinport.com.tr



**Monaco** is hoping to attract 200 calls and 190,000 passengers in 2014, a decrease from 2013 when 221 ships brought 249,806 passengers.

**MedCruise contact Colette Gai:**  
cborgheresi@ports-monaco.com



**Motril's** cruise business is due for another spike this year with around 35 ships booked so far, expected to bring 29,000 passengers including new visitor, Ocean Grace operated by Japan's Grace Lines. Last year, 28 ships brought 16,800 passengers with most heading to Alhambra, just 64km from the port.

**MedCruise contact Jessica Martin:**  
jmartin@motrilport.com



**Naples** is hoping to attract similar cruise traffic in 2014 as that recorded last year when 440 ships brought over one million cruisers to the southern Italian port. Whilst Pompeii, Capri and Naples city itself are popular with tourists, more excursions are being taken to Campi Flegrei Regional Park, an active volcanic area in the Campania region and important for archaeology, nature and thermal activity.

**MedCruise contact Barbara Casolla:**  
b.casolla@porto.napoli.it



Turkish port of **Sinop** is shaping up to receive 18 calls this year and around 6,000 passengers – a figure which mirrors 2013's season when 20 ships brought 6,271 passengers to the Black Sea port.

**MedCruise contact Bulent Saglam:**  
b.saglam@cakports.com



36 ships are due to call at Greek port of **Volos** in 2014 where a new ISPS system is being installed and will be completed by the end of this year.

**MedCruise contact Maria Papageorgiou:**  
contact@port-volos.gr



**AIDAaura** will make 16 calls in 2014 to **Trieste** where the Port Authority is increasing the length of the cruise pier to 340mtr by adding a dolphin.

**MedCruise contact Franco Napp:**  
fnapp@triesteterminalpasseggeri.it



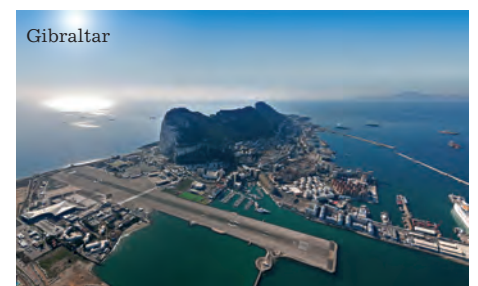
**Costa Brava** Cruise Ports forsee 43,000 passengers and 55 calls this year, with **Palamos** due to welcome 36 vessels including Zenith, MSC Sinfonia, Tere Moana and Star Flyer on maiden visits. **Port of Roses** is expecting 19 calls including eight first time callers. New tours for this year include fish auction and cooking workshops in Palamos and the history and process of wine production and tasting of local wine and produce, available from Roses.

**MedCruise contact Maria Cano:**  
maria.canoo@gencat.cat



**Gibraltar** is once again looking at growth with 181 cruise ships booked to call in 2014 up from 179 cruise ships calling during 2013 (and 173 in 2012), carrying over 285,000 passengers.

**MedCruise contact Peter Canessa:**  
peter.canessa@gibraltar.gov.uk



# MEDCRUISE NEWS



L-R: Aimilia Papachristou, Stavros Hatzakos, Thanos Pallis, Kleopatra Arapi

## SECRETARIAT

President: Stavros Hatzakos  
Secretary General: Thanos Pallis

Contact: Aimilia Papachristou - Office  
Phone: +30-210-4550282  
Email: aimilia.papachristou@medcruise.com  
Contact: Kleopatra Arapi - Office Phone:  
+30-210-4550334  
Email: kleopatra.arapi@medcruise.com

## MEDCRUISE

10 Akti Miaouli Str.  
185 38 Piraeus, Greece  
Tel: +30 210 40 90 675  
Fax: +30 210 45 50 286  
secretariat@medcruise.com  
Thanos Pallis, Secretary General

March 2014 | Issue 43

## MEDCRUISE MEMBERS

ALANYA, TURKEY  
ALICANTE, SPAIN  
AZORES, PORTUGAL  
BALEARIC ISLANDS, SPAIN  
BARCELONA, SPAIN  
BARI, ITALY  
BATUMI, GEORGIA  
BRINDISI, ITALY  
CAGLIARI, ITALY  
CARTAGENA, SPAIN  
CASTELLON, SPAIN  
CEUTA, SPAIN  
CIVITAVECCHIA, ITALY  
CONSTANTZA, ROMANIA  
CORFU, GREECE  
CYPRUS PORTS  
DUBROVNIK, KORCULA, CROATIA  
EGYPTIAN PORTS  
FRENCH RIVIERA PORTS  
GENOA, ITALY  
GIBRALTAR  
HERAKLION, GREECE  
HUELVA, SPAIN  
IGOUMENITSA, GREECE  
KAVALA, GREECE  
KOPER, SLOVENIA

KOTOR, MONTENEGRO  
KUSADASI, BODRUM  
& ANTALYA, TURKEY  
LA SPEZIA, ITALY  
LATTAKIA, SYRIA  
LISBON, PORTUGAL  
LIVORNO, ITALY  
MADEIRA PORTS, PORTUGAL  
MALAGA, SPAIN  
MARSEILLE, FRANCE  
MERSIN, TURKEY  
MESSINA, ITALY  
MONACO  
MOTRIL-GRANADA, SPAIN  
NAPLES, ITALY  
NORTH SARDINIAN PORTS  
ODESSA, UKRAINE  
PALAMOS, SPAIN  
PALERMO, ITALY  
PATRAS, GREECE  
PIRAEUS, GREECE  
PORTIMAO, PORTUGAL  
PORTOFERRAIO, ITALY  
RAVENNA, ITALY  
RIJEKA, CROATIA  
RIZE, TURKEY

SAVONA, ITALY  
SETE, FRANCE  
SEVASTOPOL, UKRAINE  
SIBENIK, CROATIA  
SINOP, TURKEY  
SOCHI, RUSSIA  
SOUDA/CHANIA, GREECE  
SPLIT, CROATIA  
TARRAGONA, SPAIN  
PORTS OF TENERIFE  
THESSALONIKI, GREECE  
TOULON-VAR-PROVENCE, FRANCE  
TRIESTE, ITALY  
TUNISIAN PORTS  
VALENCIA, SPAIN  
VALLETTA, MALTA  
VENICE, ITALY  
VOLOS, GREECE  
ZADAR, CROATIA



Published by Seatrade Communications Ltd

## ASSOCIATE MEMBERS

CLIA EUROPE  
KVARNER COUNTY TOURISM OFFICE  
PATRONAT DE TURISME COSTA BRAVA  
TURISME DE BARCELONA  
ALOSCHI & BASSANI  
BC TOURS & SHIPPING  
CAMBIASO & RISSO  
CEMAR  
CRUISE SERVICES  
D'ALESSANDRO TRAVEL

RIJEKA  
PALAMOS  
BARCELONA  
VENICE  
BARCELONA  
GENOA  
GENOA  
MONACO  
TUNIS

DONOMIS CRUISE SERVICES  
F.A. TRAVEL  
HUGO TRUMPY SRL  
IDU SHIPPING & SERVICES  
INFLOT WORLD WIDE  
INFLOT WORLDWIDE TOURS  
INTERCRUISES SHORESIDE & PORT SERVICES  
KARAVANMAR CRUISE SERVICES  
KARPATEN TURISM SRL  
LA GOULETTE CRUISE TERMINAL  
LIVORNO PORT AUTHORITY

PIRAEUS  
NORTH SARDINIA  
GENOA  
CONSTANTZA  
SOCHI  
SEVASTOPOL  
BARCELONA  
ALANYA  
CONSTANTZA  
TUNIS  
LIVORNO

MEDOV SRL  
MERCANTILE MARINE SHIPPING  
MH BLAND  
NAVIGATOR TRAVEL & TOURIST SERVICES  
PEREZ Y CIA  
SALAMIS ORGANISATION  
SAMER & CO. SHIPPING  
TARTUS TOUR  
TRANSCOMA CRUISE & TRAVEL  
TURA TURIZM

GENOA  
TUNISIA  
GIBRALTAR  
PIRAEUS  
BARCELONA  
CYPRUS  
KOPER  
ODESSA  
BARCELONA  
SINOP