

One step beyond: 47th MedCruise GA advances cruise and best port practices



MedCruise members and guests gather in Olbia

For three days, North Sardinia turned to the centre of discussions regarding cruise development in the Med and its adjoining seas, as the 47th MedCruise General Assembly, and related activities, took place in Olbia, from 14-17 October 2015.

The event was followed by 120 participants, including 10 cruise line representatives, with international press journalists also joining the discussions.

Cruise industry professionals and port executives discussed the latest developments in the sector, focusing their implications and prospects of cruising in the Med and its adjoining seas.

Among the topics discussed were the current state of the industry, the joint efforts of MedCruise members to effectively promote the Med in new markets and China, the ways that the on-going Pan-European Dialogue between cruise operators, ports and coastal tourism stakeholders, might facilitate the advancement of cruising in the Med.

Participants were also briefed on the progress of the Travel Agent Project that is jointly progressing by CLIA Europe and MedCruise (see box).

During specialised interactive workshops, MedCruise members along with cruise line guests, discussed the best practices to 'Manage Activities in the Port', searched for ways to optimise 'Relations with other Actors' and explored the best 'Policies and Practices to Promote Cruising' in the region.

In line with the MedCruise tradition, all port

and associate members had a first class opportunity to attend these interactive workshops and enjoy in total five hours of B2B meetings with 10 cruise line executives and international press representatives.

The prelude of the event was the Mediterranean regional meeting of the Pan-European dialogue between cruise lines, port, and destination stakeholders, which was organised by the European Commission at the eve of the MedCruise General Assembly - emphasising further the importance of the MedCruise events for all stakeholders in Europe and beyond.

The excellent organisation and unique hospitality of the North Sardinia Port Authority, added to the satisfaction of MedCruise members, who returned home looking forward to attending the next MedCruise General Assembly.

L-R Malcolm Morini (Civitavecchia), Stavros Hatzakos (Piraeus), Donatella Soria (DG GROW), Thomas Strasser (DG MARE)



December 2015

Issue 50

MedCruise News pg. 1-5, 8

Port facilities & Destinations pg. 6-7

List of MedCruise Members pg. 8

Launching a MedCruise-CLIA Europe Travel Agents Programme

The first results of the CLIA Europe-MedCruise strategic partnership were revealed in Paris on November 24th.

During a special event, held on board CroisiEurope's Botticelli, the Associations representing cruise lines and Med cruise ports respectively launched the CruiseExperts Programme.

Via this initiative, CLIA Europe and MedCruise are jointly working to create a French Travel Agent learning platform that aims to engage, educate and certify the travel agent community and support the growth of the cruise industry, while at the same time promoting all MedCruise members in a balanced way.

The programme will bring together the cruise community of France with the aim of growing the number of people taking a cruise holiday. The number of French passengers taking a cruise in 2014 rose by nearly 14% to 593,000.

Among the keynote speakers of the event, MedCruise President Carla Salvadó explained the main objectives of this joint initiative, and the importance that MedCruise assigns in the further development of the strategic collaboration between MedCruise and CLIA Europe.



First Mediterranean Regional Cruise Dialogue Conclusions

Meeting conclusions

1. Develop strategies for better involving 'Destinations'.
1. Adopt a more coordinated approach between all stakeholders.
2. Improve the image of cruise tourism as there seems to be a biased public perception.
3. Cooperation to better adapt to new tourism trends and clients' needs.
4. Exchange best practices and experiences.

20 YEARS
MEDCRUISE

MedCruise welcomes the conclusions of the first Mediterranean Regional Cruise Dialogue (MRCD) circulated by the European Commission.

The MRCD implements Action 3 of the European Commission's Coastal and Maritime Tourism Strategy, detailed in 2014. It was organised by DG MARE and DG Grow in October 2015 and gathered stakeholders from

ports, cruise lines and destinations.

Being the Association representing cruise ports in the Mediterranean and its adjoining seas, MedCruise has actively participated in the meeting, shaping the future of European initiatives aiming to the sustainable growth of cruising.

MedCruise members had the privilege to be briefed by the European Commission on the MRCD's outcome during the MedCruise General Assembly in Olbia.

In line with the conclusions of the regional meeting, MedCruise reconfirms its commitment to continue the fruitful cooperation with CLIA Europe, with fellow port association representing cruise ports and port authorities in Europe, and with destinations stakeholders, in order to further develop a meaningful European agenda aligning all in applying the best practices for promoting sustainable and responsible growth of cruise activities in the Med and its adjoining seas.



MedCruise at Italian Cruise Day 2015

MedCruise supported and actively contributed to the 5th successful edition of the Italian Cruise Day that was held on October 2nd, at Civitavecchia's Stazione Marittima.

MedCruise President Carla Salvadó shaped discussions during the final session of the event, explaining how the cruise industry has evolved during the last years in the Mediterranean and its adjoining seas. These new features urge MedCruise Ports to adapt their strategies, while MedCruise actively supports their efforts.

Carla Salvadó also described the main challenges that the cruise industry faces nowadays in the Med, noting the emerging opportunities for further growth.

MedCruise members representing Italian Cruise Ports attended the event, exchanging views on the current state of the industry in Italy and the Mediterranean Sea and discussing with cruise professionals best practices to serve the sector.

For the first time, four MedCruise members based in Italy will record one million passengers in the same year: Civitavecchia, Venice, Naples and Savona.

MedCruise heads for Seatrade Cruise Global in Ft. Lauderdale



MedCruise is once again participating at the annual Seatrade Cruise Global convention in Florida next March. For the first time the industry's global event, which brings together every facet of the business including cruise lines, suppliers, travel agents and partners, is being held in Fort Lauderdale at the Broward County Convention Center.

In addition to being present on the exhibition floor at Booth (529), MedCruise is also participating in the multi-track conference program with President Carla Salvadó participating on a panel session entitled: 'Where To and Why? Factors influencing deployment and itinerary strategies' taking place on Thursday March 17 between 9.30-11.00.

MedCruise shapes perspectives and initiatives at Greek Union Conference

The prospects of cruising in Greece was the theme of the conference organised by the Greek Cruise Union in the context of the 2nd Greek Tourism Expo 2015.

MedCruise SG Thanos Pallis was among the keynote speakers presenting the perspectives of MedCruise members, as well as the broad range of activities undertaken by the Association.

Thanos gave emphasis on the European Cruise and Ferry Port Network and the work in progress in cooperation with the other European port associations (ESPO, Cruise Baltic, Cruise Britain, Cruise Europe and

Cruise Norway), as well as with the association representing cruise lines (CLIA Europe) and policy-makers (European Commission) in order to develop a more coordinated approach between all stakeholders, and enhance adaption to new tourism trends via exchange of best practices and experiences.

Keynote speakers of the conference were also the Honorary President of MedCruise Stavros Hatzakos (Piraeus Port Authority) and the President and CEO of the MedCruise member port of Heraklion Ioannis Bras.



GreenPort Cruise Conference

Dealing with waste from cruise ships, innovative cruise ship terminal designs, the ongoing debate on ECA compliance and Port-City working together were the four key issues discussed during the 3rd GreenPort Cruise, held in Copenhagen, Denmark, with the active intervention of MedCruise.

MedCruise was actively present, participating with MedCruise President Carla Salvadó and its Secretary General Thanos Pallis, whereas Valeria Mangiarotti (Port of Cagliari (pictured)) was also among the guest speakers. Several of its members were also present, indicating the prioritisation of addressing environmental issues.



Supporting societal integration at Livorno Port



MedCruise was present at Livorno's inaugural event, actively supporting the positive initiative of its member port - another step towards sustainable growth of port activities in the

Mediterranean and its adjoining seas.

The official presentation of Livorno Port Centre was held on 3rd November, Fortezza Vecchia, Livorno. Livorno Port Authority, AIVP, Assoporti and Livorno Port Centre welcomed and guided all guests to the technologically innovative Livorno Port Centre that opened its door.

The event was prefaced by Mr Guiliano Gallanti (Commissioner of the Port Authority of Livorno). Esteemed speakers participated at the Think Tank Workshop:

Philippe Matthis, (AIVP President), Eamonn o'Reilly (Port of Dublin), Henk De Bruijn (Port of Rotterdam), and Gabriele Gargiulo (Port Authority of Livorno) presenting different port centres case studies.

MedCruise participates at Seatrade Europe 2015

The MedCruise stand hosted numerous business meetings between MedCruise members and cruise professionals. For three successive days, the stand of the Association representing more than 100 cruise ports in the Med was a meeting point of port representatives, cruise line executives, and stakeholders involved in the cruise sector, advancing cruise activities in the Mediterranean and its adjoining seas.

The highlights of Seatrade Europe included the welcome reception organised at the MedCruise stand, an event attended by cruise professionals and provided excellent networking opportunities to its members.

Incorporated into Seatrade Europe were the Seatrade Cruise Awards 2015. Aloschi Bros won the Innovative Shorex Award for their Pope's Summer Residence and Vatican tour. For the first time, The Pope's hidden residence in Castel Gandolfo is open to the public. Aloschi Bros is the only tour operator allowed inside the Estate with own vehicles. Tura Turizm were a finalist in the Supplier of the Year category.



MedCruise President Carla Salvadó and past president Stavros Hatzakos at the CLIA Germany Dinner and Seatrade Cruise Awards ceremony in Hamburg

Future of cruise at International Cruise Summit

MedCruise representatives and members promoted cruise activities in the Med during the fifth edition of the International Cruise Summit held in Madrid, 18-19 November.

MedCruise President Carla Salvadó was among the keynote speakers and joined the panelists discussing the future of the cruise industry in the Mediterranean.

Salvadó highlighted that during the past years MedCruise ports have recorded a significant growth in terms of cruise traffic. This is despite the fact that for the very same period the region experienced conditions of a turbulent economic and political environment. As she explained, cruise traffic

numbers for 2015 and 2016 in Med ports are also expected to be on the rise.

Discussing the growing Asian cruise market, Salvadó noted that this growth forms a huge opportunity for the Med, offering it the potential to become a popular cruise destination for Chinese tourists, both in the medium and long term.

Airam Díaz, MedCruise Director of Projects and Studies and Commercial Manager of the Port Authority of Santa Cruz de Tenerife, also took part, as well as, Jorge Nasarre (Balearic Islands), Raúl Barraso (Huelva), Ceylan Erzi (Kusadasi/Bodrum/Antalya), Luis de Carvalho (B&A Europe) and Serafín Blázquez (Inter cruises).



MedCruise will be participating at the following events worldwide in 2016

Seatrade Cruise Global, Fort Lauderdale
14-17 March, 2016



The next edition of Seatrade Cruise Global will be held 14-17 March 2016. MedCruise will be present with a stand.

Seatrade Cruise Asia, Busan
12-14 May, 2016

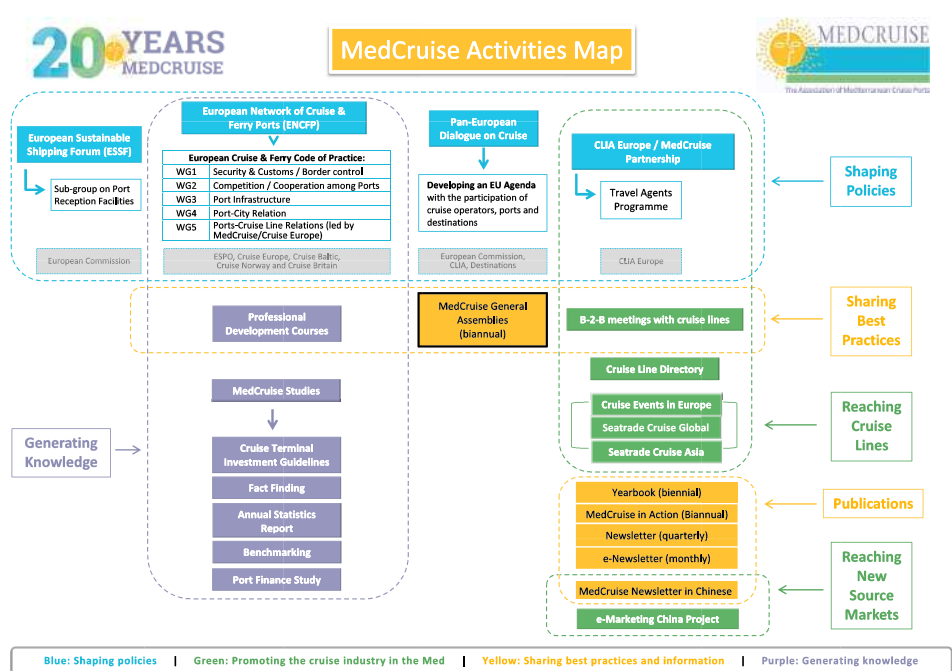


Hosted by Busan Port Authority, Busan Metropolitan City, Korea Tourism Organization and Korea Marine Leisure Network, Seatrade Cruise Asia will take place at the Busan International Passenger Terminal.

Seatrade Cruise Med, Santa Cruz de Tenerife, 21-23 September, 2016



Seatrade Cruise Med is the major biennial cruise event focused on the world's second largest cruise destination - the Mediterranean. Hosted by MedCruise member Port Authority of Santa Cruz de Tenerife.



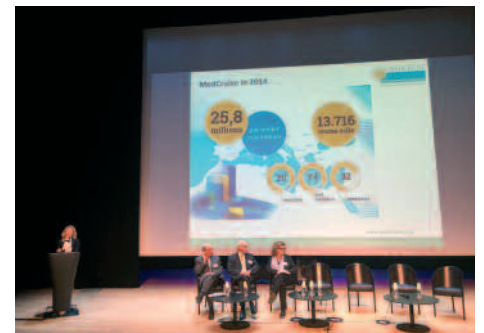
Discussions in Cote d'Azur

The Regional Transport Observatory of Provence-Alpes-Cote d'Azur (PACA) organised an event to discuss "Challenges and Opportunities of Cruise Activities in the PACA region and the Mediterranean", held in Marseille, 25 November 2015.

MedCruise Director of Professional Development and French Riviera Ports Marketing and Communication manager, Anne-Sophie Peyran, was among the keynote speakers of the event discussing the current state of the cruise industry in the Med and the challenges / opportunities for the PACA region.

MedCruise representatives of Marseille Cruise Club and Toulon Var Provence Cruise

club, were also included in the list of speakers analysing the economic benefits that result from cruise activities in the region as well as the emerging environmental challenges.



MedCruise President joins the Mediterranean week of economic leaders

MedCruise joined the 9th edition of the Mediterranean Week of Economic Leaders that took place in Barcelona, 25-27 November 2015.

MedCruise President Carla Salvadó actively participated at the discussions of the first day of the event that forms a unique platform for the exchange of experiences and debates in favor of the Euro-Mediterranean promotion and integration.

This year, on the occasion of the 20th anniversary of the Barcelona Process, ASCAME (the Association of the Mediterranean Chambers of Commerce and Industry) organised a Mediterranean and European Private Sector Meeting, bringing

together the main key actors of the Mediterranean, European and Arab private sector in order to support 20 strategic economic initiatives set out in the 20+20 Declaration.

This 20+20 Declaration was presented on November 25th at the Casa Llotja de Mar following the official opening ceremony of the 9th Mediterranean Week of Economic Leaders.

MedCruise was pleased to join a wide range of high-level regional and international organizations in supporting this 20+20 Declaration, which presents a set of strategic initiatives in order to achieve a more efficient and regional integrated development.



Barcelona

Huelva

On November 28th, the cruise ship Azamara Journey made her first call at the Southern dock of the Port of Huelva carrying 1,000 passengers.

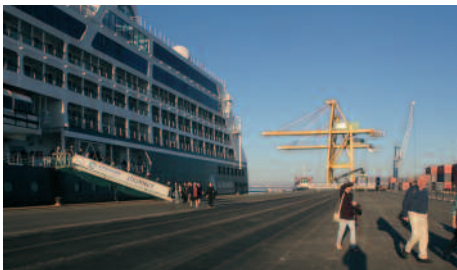
The 181mtr cruise vessel left Gibraltar with nearly 600 passengers of European, American and Canadian origin and a crew of more than 400 from around the world. She docked at the South Quay at 08.30 and did not leave until 22.00 heading to the island of St. Martin in the Caribbean - according to the company Bergé consignee.

More than 600 of total passengers chose to walk around the streets of the city of Huelva, while around 100 visited the city of Seville.

The Port of Huelva offers passengers bus shuttles that connect the South Pier with the centre of Huelva. Near Parque de las Palomas, cruise passengers were warmly welcomed by

the theatre group alota Tinto, that recreated Discovery American, while they were also offered wine of origin Condado de Huelva. Just before departure, the visitors once again had the chance to taste the exceptional local wine.

MedCruise contact: Manuel Vega
mvega@puertohuelva.com



Palamós and Roses

Palamós has closed an excellent season with 37 calls and 40,800 passengers, breaking all records with the highest number of passengers since it started welcoming cruise ships in 1998. This year's positive results saw the port receiving almost 3% more calls and 6% more passengers compared to 2014.

This season, the ships Costa Magica, Riviera, Mein Schiff 2, Saga Pearl II, Seabourn Odyssey and Seven Seas Mariner called at Palamós for the very first time.

Meanwhile, the port of Roses rounds off the maritime and tourism-related attractions of the Costa Brava and provides a perfect complement to the port of Palamós. This has been the fourth stable season on the run with regard to cruise ship activity in Roses, a port that is striving to

forge itself a place on the international cruise market. Roses ended the season with seven calls and around 1,500 cruise ship passengers.

The cruise companies that operated in Roses this season were Club Med Cruises and Paul Gaugin, with the ships Club Med 2 and Tere Moana.



French Riviera



On September 26th, the French Riviera Cruise Club celebrated the gastronomy festival in Villefranche sur mer on board the RCCL cruise ship Vision of the Seas.

This lunch was organised in collaboration with Royal Caribbean International cruise line, the restaurant Mayssa and the agency So between.

This convivial lunch, chaired by Lis Lauritzen, the ship captain, brought all together

around a table several hosts of the French Riviera Cruise Club, officials from the city of Villefranche sur mer and members of RCI.

The menu was concocted by the Chef of Vision of the Seas, Paul FONG, to illustrate the art of cruise line hospitality and by the French Riviera Chef Stéphane Barbet from the restaurant Mayssa, as a French know-how signature.

The 8th of October in Cannes was a day high in colours and festivities under a beautiful French Riviera sunshine for this special welcome day organised by the French Riviera cruise club.

All cruise guests from the cruise ships Aida Aura, MSC Divina and Vision of the seas were able to appreciate a special welcome day dedicated, with local tastings, with local musicians and discounts in many shops.

MedCruise contact: Anne-Sophie Peyran
anne-sophie.peyran@cote-azur.cci.fr

Barcelona



Cruise activity in the Port of Barcelona generates €796m in annual revenue, contributes €413m to the GDP of Catalunya and supports 6,759 jobs. These are among the key findings of an in-depth study carried out by Jordi Suriñach, professor of applied economy at the University of Barcelona.

Suriñach presented his findings at a briefing attended by Barcelona Port Authority chairman Sixte Cambra and the director general of Tourism Barcelona, Jordi William Carnes. The study used data for calendar year 2014.

The average cruise vessel port call in Barcelona generates €1m in overall revenues and contributes half a million euros to the Catalan GDP across various sectors of the economy. Each call also produces €200,000 in tax revenue, including VAT, income tax and business taxes.

In addition to the obvious impact on income for businesses directly related to the port, the study pointed out that 78% of turnaround passengers arrive and/or depart Barcelona by air, significantly supporting North Atlantic operations by American, Delta and United Airlines and Air Canada, as well as long-haul flights by Emirates, Qatar Airways and Singapore carrying traffic from Asia and Australasia.

Last year 2,364,292 cruise passengers moved through the Port of Barcelona. Of these, 1,360,271 were in transit. Among the others, embarking and/or disembarking turnaround traffic, 565,400 visited the city for an average stay of 2.6 nights, spending a daily average of €202, while 438,621 passengers arrived and departed without an overnight stay.

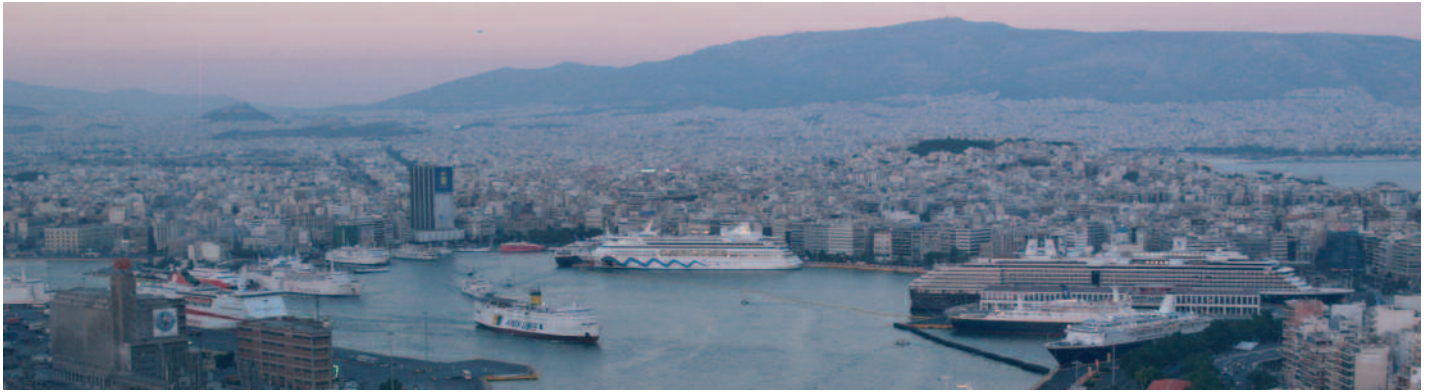
Barcelona's growing importance as a turnaround port makes it possible to spread the impact of visiting passengers more broadly across days and times of day, according to Suriñach. Itinerary planning by the cruise lines two years in advance of operations also assists in smoothing that impact.

On the environmental front, the study determined cruise vessels produce only 1.2% of the nitrogen oxide in Barcelona's air, and less than 0.2% of suspended solids.

During the period 2000 through 2014, direct investment into cruise facilities at the port totaled €109m, of which 86% came from the private sector.

MedCruise contact: Carla Salvadó
carla.salvado@portdebarcelona.cat

Piraeus



The flow of cruise passengers in the Port of Piraeus continues on increased rates even during autumn.

On the 13th of October 2015, the Port of Piraeus accommodated seven large cruise vessels, five of them close and over 300mtr long. The total number of passengers and crew exceeded 20,000.

The ships were Mein Schiff 3, carrying 2,762 passengers, Norwegian Jade, carrying 2,587 passengers, Le Lyrial carrying 162 passengers, Celebrity Silhouette carrying 2,751 passengers,

Zuiderdam, carrying 1,800 passengers, MSC Opera, carrying 2,079 passengers and Costa NeoClassica carrying 1,037 passengers.

The Home Porting Traffic rate, for the nine months period of 2015, increased 16% comparing with the same period of 2014. During this summer, large Cruise Companies redrew their itineraries increasing the embarkation and the disembarkation rates of the Port of Piraeus.

Piraeus is already in contact with representatives of Carnival Cruise

Company and has finalised all the details, for the coming of the newly made Carnival Vista for next year. Making use of Piraeus port as a home port, for more than 4,000 passengers each time, sets the basis for dynamic developing standards to its facilities. This shows that one of the largest cruise companies in the world trusts the Port of Piraeus for its facilities, security and qualitative services.

MedCruise contact: Stavros Hatzakos
hatzakosstavros@olp.gr

North Sardinian Ports



One of three cruise ports located in North Sardinia, Olbia, along with Porto Torres and Golfo Aranci, are set to welcome a record 150 calls and 280,000 plus passengers this year.

It is a relatively new cruise destination having promoted the area to the cruise industry in the past decade. In 2012, 48 cruise calls were recorded so we have come a long way in a short time frame.

In 2015, Olbia will welcome then lion's share of traffic with 125 calls followed by Porto Torres with 14 and Golfo Aranci 11. Olbia which means 'happy' is a natural harbour and transit port, although MSC and Costa use the port for limited embarkations. The largest ship to call to date is Carnival Breeze, while at Porto Torres the biggest ship to visit alongside is Celebrity Equinox.

The season currently runs from April

through to mid October.

The most popular shorex from Olbia and Golfo Aranci is the Costa Smeralda covering an area of 80km of coastline with a hinterland of rolling granite hills interspersed with maquis shrubland and wild olive groves. At the heart of Costa Smeralda is Porto Cervo, a prestigious village with multicoloured buildings where passengers stroll and browse in the exclusive shopping district created by the Aga Khan in the early 1960s.

Tours from Porto Torres generally focus on Alghero, a town surrounded by old towers and walls and built by the Doria family from Genoa in the 12th century, Shops selling coral and filigree handicrafts are well visited (see also Page 8).

MedCruise contact: Marco Mezzano
comunicazione@olbiagolfoaranci.it

Portimão



As part of the improvement plan concerning operating conditions and security of the commercial ports of Faro and Portimão, APS (Administração dos Portos de Sines e do Algarve, S.A.) acquired for the Commercial and Tourism Quay of Portimão a set of equipment for non-intrusive inspection of passengers and crew baggage to embark/disembark, as well as metal detection equipment.

In this manner, the devices installed in the Portimão terminal comprise a device for X-ray baggage inspection, two gateways for metal detection as well as two portable metal detectors. Training actions will also be undertaken for the operators of this equipment, to ensure its proper use.

This strengthening of security conditions in the Port of Portimão entailed an investment of approximately €67,000 and was co-financed by the Operational Program Algarve 21, a program that aims to affirm the Algarve as a dynamic, competitive and solidary region.

MedCruise contact: Jose Pedro Soares
jose.soares@apsinesalgarve.pt

Savona



MedCruise member Port Authority of Savona has signed with Costa Cruises a three year agreement for the development of sustainability in the cruise sector.

The agreement, which was signed on 10 November, calls for joint action in various fields to ensure the responsible growth of Savona's cruise industry.

Neil Palomba, president of Costa Cruises, said: "Thanks to the close cooperation between Costa and the Port Authority, Savona will become an example for the sustainable long term development of cruises. Creating economic, social and environmental value for the area."

"In recent years, we have made significant investments in Savona, including the construction of the Palacrociere second terminal, and we are looking forward to

growing responsibly with the city," he added.

The main areas of intervention which the agreement cover concern environmental protection, social and economic impact and communication achievements.

Costa Cruises has engaged in initiatives to manage fuel use and emissions from its ships, and has constructed a cruise ship powered by LNG gas which will be delivered in 2019 to it's home port of Savona.

Social and economic initiatives will aim to enhance relations with the local community. The new Palacrociere terminal will increase cruise traffic over the next few years which will result in higher employment.

Educational programmes for students will take place in local schools and universities related to research projects on cruises and tourism, as well as this the port will open its doors to students who visit the city for cultural events and conference.

"The signing of this memorandum formalises a series of mutual commitments with the clear objective to continue to improve and implement important infrastructure," said Gian Luigi Miazza, chairman of the Port Authority Savona.

He concluded: "We will be a model of high-level service to cruisers and ships, the peak days of well over 200 unites will create numerous new jobs for the local community."

MedCruise contact: Cristina De Gregori
degregori@porto.sv.it

Tarragona



Tarragona Cruise Port Costa Daurada is reaping the benefits of its commercial strategy initiated three years ago and is consolidating its position as an exclusive international cruise ship destination in the Mediterranean. During 2015, 11 cruise ships have moored at the cruise terminal in the Port of Tarragona, located on the Llevant wharf, with 11,600 passengers on board. These figures represent 83% growth on last year, and the forecast for 2016 is even higher.

To accommodate the arrival of cruise ships, currently the facilities of Marina Port Tarraco are being used, situated on the port

promenade of Tarragona, for small cruise ships less than 140m long. Ships of greater draft use the cruise terminal situated on the Llevant wharf.

To respond to the necessities of the cruise lines, in relation to the predicted volume of passengers, the Port of Tarragona is working on the option of taking advantage of the construction of a new, multi-functional esplanade on the Prats wharf, to be used exclusively for cruise ships in the future.

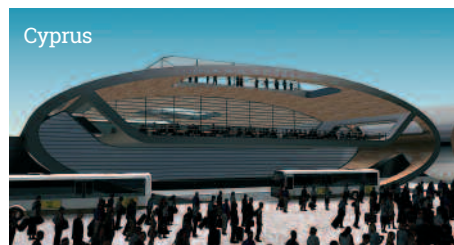
MedCruise contact: Alba Colet
cruises@porttarragona.cat

Infrastructure round-up

Cagliari has been given the green light to build a new terminal and tenders have been issued. The single storey building will also add parking for 80 cars. Currently the southern Sardinian port handles around 600 passenger turnarounds: Costa (500) and MSC (100) and next year both lines return again for partial turnarounds.



La Spezia recently inaugurated a second cruise passenger terminal and in the Eastern Med: **Corfu** has completed a new berth enabling the Greek port to accommodate up to seven large ships at one time and **Cyprus Ports Authority** is nearing completion of a new terminal at Lemesos which will be fully operational in 2016.



Sète has reassigned a former cargo berth for cruise ship handling which will be ready by spring 2016. Dredging and berth fill is underway and will result in a berth of around 470mtr long with no draft restrictions and **Marseille** pushes forward with widening the Northern Channel entrance to the harbour; the first phase of widening the pass by 50mtr is completed and the next work involves the reduction of the Mourepiane breakwater by 50mtr to improve access and enable larger ships to cross the northern pass whatever the weather. The project will be completed by late 2016.

Ravenna is investing in infrastructure upgrades alongside its 300mtr long dedicated cruise berths, including new approach roads, parking area and gardens. It is also considering building a more permanent terminal building to replace the seasonal structures currently in operation. Ravenna is expected to attract 52,000 passengers in 2016, which is a 30% increase on this year.

Olbia GA in pictures



Aris Batsoulis (Corfu Port Authority) on the shorex excursion to Porto Torres and Alghero



Cruise line executives enjoy a lunch sampling local food and wine at the Piero Mancini Vineyard in the countryside near Olbia.



L-R: Gala dinner tablemates: Gianbattista Borea d'Olmo (Monaco) and Anne Marie Blum (Toulon-Var-Provence) at Pedrinelli Restaurant, Porto Cervo



Azamara Cruises' Mike Pawlus pictured outside San Gavino Basilica with Eftychia Christodoulou from Cyprus Ports and greeter in traditional costume.



Carla Salvadó MedCruise President thanks GA hosts North Sardinian Port Authority represented here by Special Commissioner Pietro Preziosi who is also pictured left with Marco Mezzano, the port's head of marketing and communications.



MedCruise members visited Porto Torres and the rich archeological treasures at the Antiquarium Turritano Museum



L-R: Carnival Corp's Michel Nestour pictured with Livorno Port Authority's Giovanni Spadoni and Istanbul's Figen Ayan



L-R: Aimilia Papachristou, Carla Salvadó, President, Thanos Pallis, Secretary General and Kleopatra Arapi

MedCruise

10, Akti Miaouli Str., 185 38 Piraeus, Greece
Tel. +30 210 45 50 282
Fax. +30 210 45 50 286
Email: secretariat@medcruise.com

Medcruise Members

Alanya	Marseille
Alicante	Mersin
Azores	Messina
Balearic Islands	Monaco
Barcelona	Motril-Granada
Bari	Naples
Bastia / North Corsica	North Sardinian ports
Brindisi	Odessa
Burgas	Palamós
Cagliari	Palermo
Cartagena	Patras
Castellón	Piraeus
Ceuta	Portimão
Civitavecchia	Portoferraio
Constantza	Portofino
Corfu	Ravenna
Cyprus ports	Rijeka
Dubrovnik / Korcula	Savona
Egyptian ports	Sète
French Riviera ports	Sibenik
Gibraltar	Sinop
Gioia Tauro	Sochi
Heraklion	Souda / Chania
Huelva	Split
Igoumenitsa	Taranto
Istanbul	Tarragona
Kavala	Ports of Tenerife
Koper	Thessaloniki
Kotor	Toulon-Var Provence
Kusadasi / Bodrum /	Trabzon
Antalya	Tunisian ports
La Spezia	Valencia
Lisbon	Valletta
Livorno	Venice
Madeira ports	Volos
Málaga	Zadar

Associate Members

Costa Brava Tourism Board	Karavanmar Cruise Services
Council of Saint Carles de la Ràpita	La Goulette Cruise Terminal
Dubrovnik County Port Authority	Livorno Port Authority
Kvarner County Tourism Office	Medov Srl
Turisme de Barcelona	MH Bland
Allegra Montenegro	MMS (Mercantile Marine Shipping)
Aloschi & Bassani	Navigator Travel & Tourist Services
B&A Europe (Bermello Ajamil & Partners)	Pérez y Cía
Cruise Services	Salamis Shipping Services
D' Alessandro Travel	Samer & Co. Shipping
Donomis Cruise Services	SNEAL (Scandinavian Near East Agency S.A.)
Hugo Trumpy Srl	Tartus Tour
Iberoservice	Transcoma Cruise & Travel
Idu Shipping & Services	Tura Turizm
Inflot World Wide	World Synergy Travel
Inter cruises Shoreside & Port Services	



Published by Seatrade