

MedCruise News

50th MedCruise General Assembly celebrated in Gibraltar



MedCruise celebrated its 50th General Assembly in Gibraltar, a destination offering premier cruise opportunities, as well as one of the founder member ports of the Association.

This major cruise event offered to MedCruise delegates a unique opportunity to meet with more than 110 cruise industry professionals

including cruise line executives and journalists from all over the world, port executives, travel agents and other stakeholders, while at the same time enjoying an indelible travel experience in beautiful Gibraltar.

For more information on the event, turn to page 5 or contact secretariat@medcruise.com.

Toulon to host the 51st MedCruise General Assembly

The 51st MedCruise General Assembly will take place 11-14 October 2017 in Toulon, France.

During the General Assembly meeting, MedCruise member representatives together with other esteemed guests will discuss the latest developments of the cruise sector, as well as the implications and prospects of cruising in the Med and its adjoining seas.

In line with the MedCruise tradition, all regular and associate members will have a first class opportunity to discuss the developments in the region, while they will

also devote time in B2B meetings and interactive sessions with cruise line executives.

The elections of MedCruise President and Board of Directors will also take place during this forthcoming 51st MedCruise GA.

For more information on this major MedCruise event, please visit www.medcruise.com



September 2017

Issue 54

MedCruise News pg. 1-6

Port facilities & Destinations pg. 7-15

Why cruise to YOUR port? pg. 16-19

List of MedCruise Members pg. 20



Heading for the 5th MedCruise Professional Development Course

MedCruise is organising another edition of its Professional Development Course aiming to educate its port and associate member representatives on how best to host cruise activities.

This 5th MedCruise Professional Development Course will be held on board Celestyal Olympia, on 27-30 October 2017.

MedCruise members will join the Celestyal vessel on a 4-day round trip embarking in Piraeus on October 27th (Piraeus-Mykonos-Kusadasi-Patmos-Heraklion-Santorini-Piraeus).

PDC participants will benefit from more than 15 hours of professional training – complimentary for all members of the Association – covering various topics, including:

- Sharing best practices / Prototyping the future / Implementing change successfully
- Marketing Cruise destinations
- Berthing at port: Operational issues
- Serving the passengers / Shore excursions

Specialised instructors and cruise industry experts will make sure that this rich in terms of content professional development programme will be both enlightening and enjoyable for all participants.

MedCruise and CLIA initiative to educate and certify travel agents community

MedCruise and CLIA Europe joined forces to create a Travel Agent learning platform, specially designed to engage, educate and certify the French and

Spanish travel agent community and further support the growth of the cruise industry. Following the successful completion of the first European events in France aimed both at

training agents and attracting new agents into membership, the programme has now moved to its next phase involving even more marketing and promotional actions.....



Cruise Lines International Association
France



Cruise Lines International Association
Spain



MedCruise Ports expand markets in China



Beyond The Horizon of Zheng He Branding the Mediterranean in China

As part of MedCruise marketing strategy aiming to promote the Mediterranean and its adjoining seas as the most popular cruise destination among Asian cruisers, a MedCruise delegation travelled to Shanghai to attend ITB China 2017.

With China being in 2016 the second largest

source market for cruises after the United States, MedCruise destinations see great potential in this pioneering marketing strategy.

This first edition of ITB China that was held 10-12 May in Shanghai forms a travel trade show exclusively focused on the Chinese Travel Market. The three day event gathered

international destinations, service and travel technology providers in Shanghai connecting them with handpicked Chinese buyers.

The Association was represented at the show by Maria Cano, Vice President of MedCruise and member of the Board of Directors responsible for the Communications, Website and China project, as well as by members of the MedCruise Secretariat.

Apart from the participation at the show, MedCruise in collaboration with its partners in Chinese Friendly organised a series of meetings with travel agents promoting the MedCruise destinations as the best choice for Chinese cruisers.

The message spread to the Chinese world is clear: there is nowhere else on earth where one can cruise to so many different countries within such a short period of time and sample as many flavours, cultures and retrace the footsteps of history as one can in the Mediterranean and its adjoining seas.

MedCruise benefited also of its presence in ITB China 2017 exhibition and conference in order to actively interact with the cruise lines that deploy in the region and exchange views and ideas regarding the Chinese cruise market.

Feel free to visit the MedCruise website and download the MedCruise Secretariat report on the progress of the project "Promoting MedCruise port destinations in China".



MedCruise participates in expert group in Blue Economy

MedCruise participated at the inaugural meeting of the expert group on Skills and Career development in the Blue Economy. The event took place in Brussels on the 1st of June and the agenda included an overview of policy context and experts input as basis for the future work. It also included a more detailed discussion on industry-education cooperation; ocean literacy and awareness raising of blue careers; and Lifelong learning, mobility and training programs.

MedCruise will continue contributing to the work of the Expert Group, shaping among others the work of the subgroup devoted to industry-education cooperation, as Thanos Pallis, MedCruise Secretary General has been appointed as a member of the Group for a period of three years.

MedCruise was also present at the high-level event on "Skills needs in an evolving maritime green economy" organised by the European Commission in order to highlight how the transition to a low-carbon economy is impacting on the workforce needs of the blue economy. If on one side many maritime sectors are looking more and more into green solutions which can deliver more and better jobs, on the other side the industry suffers from an insufficiency of professionals equipped with the skills and competencies needed.

During the meeting, Karmenu Vella, European Commissioner for the Environment, Maritime Affairs and Fisheries, presented the initiatives taken so far to support both industry and education to overcome this challenge and to benefit as much as possible of this opportunity.



European Environmental Ports Conference

MedCruise participated in the European Environmental Ports Conference held in Antwerp, on the 7th and 8th of June 2017, represented by its member assigned for environmental issues, Mrs Valeria Mangiarotti.



During her intervention, MedCruise representative discussed the "Future of Reduced Emissions in European Ports".

Given the increasing focus on environmental regulations from the IMO and policy makers in the maritime sector, there is a growing responsibility and requirement of ports to reduce their environmental impact; it is an important time to share best practices and explore new technologies and methodologies in order to advance daily operations of a port with minimal ecological consequences.

The two-day event featured informative presentations on the very latest challenges, solutions and developments in reducing emissions, pollution and energy consumption, as well as engaging discussion around the exciting potential of co-operation and symbiosis.

Work #portstogether: Specialised WGs to advance the interests of MedCruise members

Following the decision of the 50th MedCruise General Assembly held in Gibraltar, two specialised Working Groups have been formed within the Association - with the aim being to advance the interests of MedCruise member ports and associates.

WG-Studies: Impact of Cruising / LNG facilities

The main focus of this WG shall be the impact of cruising and its measurement, as well as how to best serve LNG vessels. The WG will be led by Airam Diaz (MedCruise Director, Ports of Tenerife).

WG-Studies will work on defining and monitoring the forthcoming MedCruise study/studies that have been defined during the 50th MedCruise General Assembly, by reviewing the content, the involvement of MedCruise members, the involvement and formal call for expression of interest by any consulting party,

and the advancement of the study.

Aiming to understand the precise impact of cruising, and set the records right, the WG will discuss how to take advantage of the experience that a number of ports and destinations have from similar exercises on the measurement of the impact of the cruise activities on ports/cities/destinations. The WG will also explore how best to develop - potentially in partnership with specific cruise lines, or their association - a project focusing on the way towards LNG facilities in cruise ports, as identified during the recent MedCruise GA.

MedCruise WG-China/Asia: Expanding source markets

This specialised WG will work on the development of the next steps as regards the MedCruise pioneering project aiming to promote a 'Cruise the Med' culture in China and

the broader Asian market. The WG will be led by Maria Cano (MedCruise VP, Port of Palamos).

MedCruise is working, since 2015, on an extensive China Marketing Plan to benefit MedCruise ports and destinations. As part of this strategic plan, beyond the presence at various events in Far East (COTTM; ITB China; Seatrade Asia), MedCruise established a Chinese website and has taken further initiatives aiming to emerge the Mediterranean as the mostly preferred cruise destination among Chinese cruise tourists.

The scope is to now advance the second phase of the project, further promoting in China/Asia the concept that the Mediterranean has numerous advantages over other cruising areas, with its diversity of cultures, peoples, languages and history that make it an attracting cruise destination for Asian/Chinese citizens.

MedCruise Diary 2017

Seatrade Europe 2017, Hamburg
6-8 September



Our Ocean Conference 2017, Valletta
5-6 October



Italian Cruise Day 2017, Palermo
6 October



GreenPort Conference 2017, Amsterdam
10-13 October



51st MedCruise General Assembly, Toulon
11-14 October



5th MedCruise Professional Development Course
27-30 October



Seatrade Cruise Asia Pacific 2017, Shanghai
1-3 November



International Cruise Summit 2017, Madrid
29-30 November



New MedCruise Initiative: Ask fellow cruise ports all you want to know

MedCruise has always served as a channel of communication and knowledge dissemination between cruise ports in the Mediterranean and its adjoining seas.

To enhance this interactive relationship, the Association of Mediterranean Cruise Ports will soon launch a brand new internal initiative aiming to further encourage the proactive exchange of information and best practices between its members.

This new initiative will assist MedCruise

ports and associates in further developing their corporate strategy and improving their decision-making process and practices.

Stay tuned for more information on this project within the next few weeks!



Join the MedCruise #PortsTogether campaign



MedCruise recognises the need for all stakeholders of the cruise port industry to set up a value chain and work together, and thus invites you to join its #PortsTogether campaign.

All you need to do is post your news, ideas or thoughts regarding cruise ports in the Med and its adjoining seas and tag #PortsTogether on Facebook, Twitter or Instagram.

Join the MedCruise movement now and bring **#PortsTogether!**

"Member of the Week" Initiative

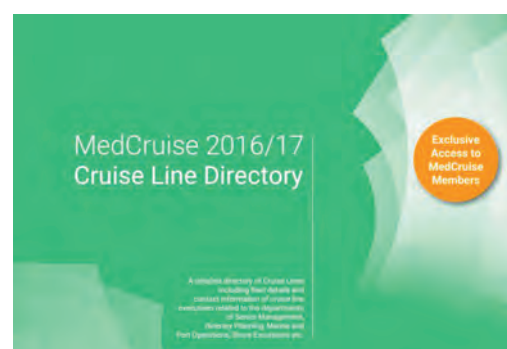
MedCruise has developed a brand new initiative aiming at further promoting its port and associate members to the cruise world on an individual basis.

As part of this initiative, MedCruise circulates to more than 2.000 cruise industry professionals and decision makers around the globe a «Port of the Week» profile including information and photos of the particular destination and its tourist attractions, along with port facts and related contact details, as well as a «Cruise Partner of the Week» profile including information of the particular associate. This new initiative has been very well received by both cruise lines and journalists.

MedCruise membership enjoys updated Cruise Line Directory

The updated MedCruise Cruise Line Directory 2016/17 is available to the MedCruise membership since the end of 2016.

All the members of the Association are offered exclusive access to MedCruise Cruise Line Directory, which forms a detailed directory of all major cruise line companies including fleet details, as well as contact information of cruise line executives related to the departments of Senior Management, Itinerary Planning, Marine and Port Operations, Shore Excursions etc.



MedCruise selected as member of European Ports Forum

MedCruise will bring cruise ports interests at the forefront of European port related initiatives, following its selection as member of the European Commission's expert group 'European Ports Forum'.

The EPF is expected to:

- Exchange information on policies and initiatives taken at Commission level, Member State level or by port industry stakeholders and contributing to the priorities identified in the Valletta Ministerial Declaration of 10 April 2017 on the EU Maritime Transport Policy;

- Provide advice to the Commission on initiatives to promote and support a uniform implementation of Regulation (EU) 2017/352 establishing a framework for the provision of port services and common rules on the financial transparency of ports;

- Support the cooperation between Member States' authorities on matters arising from the implementation of the above-mentioned

Regulation;

- Provide advice, analysis, information and data to the Commission to follow-up and monitor the strategy and actions outlined in its Communication: 'Ports: an engine for growth' (COM(2013)295) and, if necessary, update it;

- Provide advice, analysis, information and data to the Commission on any other matters related to the various Commission policies with an impact on maritime ports.

The Association of cruise ports in the Med and its adjoining seas has been selected on the basis of "the competence and experience of the organisation and its capacity to represent the position shared by stakeholders in its category".

"We are looking forward to work with other experts representing the users of our cruise ports, providers of port services, port employees, port-cities, non-governmental organisations and not least European and Member States' authorities in order to advance the role of cruise ports in developing those policy initiatives that

would facilitate the sustainable growth of cruise ports in the Med and beyond" says

Thanos Pallis, MedCruise Secretary General, who will represent the Association at the European Ports Forum.

MedCruise is already active at the European front, being a member of the European Sustainable Shipping Forum (ESSF), appointed at the expert group on "Skills and career development in the blue economy", and contributor at the Stakeholders Advisory Group on Maritime Security. In 2014, along with the European Sea Ports Organisation (ESPO) and other European cruise port associations it formed the European Network of Cruise and Ferry ports, operating within ESPO.



50th GA in Gibraltar - rocking around the dock



Cruise line executives and delegates attending the MedCruise 50th GA in Gibraltar had the chance to tour the rock.

Gibraltar may be small but there is a lot to do in a day – tax free shopping, dolphin watching, ape encounters and trip to Gorham's Cave and surrounding cliffs, which have been inscribed onto UNESCO's World Heritage list.

Shipping and tourism are main pillars of Gibraltar's economy, with around 200-230 cruise ships visiting the North Mole berth and terminal annually. Cruise line executives attending the 50th GA visited the cruise terminal for a site inspection.

The largest ship to berth at Gibraltar is Ovation of the Seas with just over 4,000

passengers in 2016. Luxury vessels can also be accommodated at the Small Boats Marina which has a 6.5mtr water depth alongside.

The town centre is just 15 minutes walk from the port – Main Street and its duty free shops are very popular with cruise visitors as is the cable car to the Upper Rock Nature Reserve with attractions which include the World War II Tunnels excavated during 1939-1944,

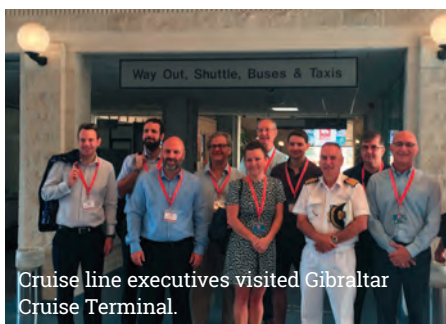
The Great Siege Tunnels excavated between 1779-83. St. Michael's Cave, Apes' Den, Military

Heritage Centre, Moorish Castle and 100 Ton Gun.

Another popular stop on tours is Europa Point, the southernmost point of The Rock and less than 16 miles from Africa's coast.



Kerry Anastasiadis, Chair of CLIA Europe and Celestial Cruises at Europa Point



Cruise line executives visited Gibraltar Cruise Terminal.



Barcelona's Mar Perez, meets an ape.

Can East Med learn from West Med networks?



During the MedCruise 50th GA conference a panel discussion took place looking at regional port and destination networks and reviewing if East Med ports might benefit from replicating regional West Med networks?

Two Italian, two French and two Spanish small to mid-sized ports, collectively known as the Boutique Ports project, formed two years ago to present alternative West Med themed cruises.

The ports involved in this initiative are Palamós and Mahón (Spain), Nice and Sete (France) and Portoferraio and Porto Torres (Italy).

'We decided to cooperate and find synergies among the ports in order to create some new themed cruises as it's not easy to make your mark as an individual small port,' remarked French Riviera's Anne-Sophie Peyran.

Balearic Islands' Jorge Nasarre, described an initiative launched last year focussing on the islands of the West Med: Four ports of

Alghero in Sardinia, Ajaccio Corsica, Messina Sicily and Mahon in Minorca.

'All are embedded in towns and have a common history,' said Nassare who showed a video highlighting the six ports offering an insight into the origins of civilisation with themed cruises based on heritage, nature and gastronomy. 'We are trying to give cruise planners some ideas of what can be found on these islands,' he said.

Turning to the Adriatic, Bojan Babic from asked whether the Adriatic and Ionian ports - which number 30 across six countries - might not group together to create a marketing and promotional grouping as the Boutique Project or islands' West Med initiatives.

'The Adriatic is facing a challenge with less cruise traffic now than the totals of 2012/13 as it has been hit in the last five years by the "Venice effect" and the loss of larger ships calling there,' he remarked.

Figen Ayan, representing Istanbul, was asked if a local ports initiative might help the

East Med through its current crisis. 'I think we need a networking cooperation between the Aegean, Turkey and Black Sea ports now more than ever,' she replied.

Staying hopeful and confident of the East Med's ability to bound back, Ayan said, 'If calls in the Aegean are sustaining then one day the ships will come back to Turkey and the Black Sea and being at MedCruise GA meeting all the cruise line executive has given me an energy.'

Disney Cruise Line's marine ops manager Paul Britton (right) remarked, 'MedCruise does a great job in promoting smaller ports to the cruise lines but North American consumers may not know some of the smaller Med islands for example, but when they go they



really love them.'

Claudius Docekal (left), vp Crystal Cruises concurred, 'for North American passengers you need marquee ports in the itinerary' yet James Langley (right), head



of marine ops at Saga Cruises said, 'knowing the cruise line passengers is so important as my marquee ports may be different to Paul's [Britton] and right now for Saga passengers, boutique is on trend.'



Attendees at the 50th GA were hosted at a cocktail reception.

L-R: Kristijan Pavic, MedCruise President and Port of Dubrovnik, Hon Samantha Sacramento MP, Nicky Guerrero, Gibraltar Tourist Board, George Gaggero, MH Bland



Gala dinner at St. Michael's Cave

New members to the association...

Ashdod

Ashdod is just one hours drive from the holy city of Jerusalem, and Bethlehem, and the Dead Sea and 35 minutes' drive from Tel Aviv, Israel's largest city.

Over 90,000 cruise passengers visited Israel in 2016, a decline on previous years figures, but to be expected in the current political situation.

Visitors to Ashdod can make full use of the modern railway, newly built highways, roads and interchanges, allowing easy access to and from the city, as well as convenient driving within it.

In its thousands of years of history, Jerusalem, a place of major importance to three main religions – Judaism, Christianity and Islam, has seen countless conquests and destruction, triumphs and disasters. Discover sites such as 'The Western Wall', the holiest site in Judaism; The Church of the Holy Sepulchre, where Jesus was crucified and see a view of the impressive Al-Aqsa Mosque, the

third holiest site in Islam. These places are located in the 'Old City', an extraordinary walled city, filled with unique buildings, narrow passageways, bustling markets and a mix of cultures and languages.

Outside the walls of the Old City lies modern-day Jerusalem, a vibrant and dynamic place filled with bustling restaurants, cafés and cultural life.

MedCruise contact: Tomer Spatz
tomers@ashdodport.co.il



©Pavel Tolchinski



Jerusalem

DP World Limassol



In April 2016, DP World Limassol was awarded an exclusive 25-year concession to operate the multi-purpose terminal in Limassol. At the same time, P&O Maritime – a DP World subsidiary – was awarded an exclusive 15-year concession to provide the Port of Limassol's full range of marine services.

The terminal's various activities are divided among three multi-purpose quays. These activities include break-bulk, general cargo, ro-ro and oil and gas services, in addition to the array of services involved in operating Limassol's brand-new passenger terminal.

As is the case in all locations where DP World operates, DP World Limassol forms an integral part of the local community and employs a growing workforce, regularly generating new job opportunities.

A new modern terminal designed to accommodate the largest operating cruise vessels, is scheduled to open in the summer at

DP World Limassol port. The new terminal consists of seven pods with an internal area of 7,000 square meters. Along with 24-hour availability the terminal offers integrated services including Home Call and Day Call handling capability, ensuring an improved customer experience.

DP World Limassol has a draft of up to 11 metres (tide free) and three 400 metre berths that can accommodate cruise vessels. It is third addition to the cruise terminal portfolio that DP World operates globally, after cruise terminal operations in Mina Rashid, Dubai and Quinquela Martin, Argentina.

Limassol is one of the major destinations in the Mediterranean for the cruise industry with the opportunity to be the first port of call for cruise lines after transiting the Suez Canal. The terminal offers fast turnaround times for connections to both Larnaca and Paphos international airports. With favourable weather

conditions throughout the year, cultural heritage, excursions and events all through, Cyprus and Limassol present the opportunity for a memorable experience.

Charles Meaby, General Manager, DP World Limassol commented: "With the opening of this new terminal, all our visitors will enjoy an even more impressive welcome. DP World Limassol continues to promote the development of tourism in Cyprus and driving economic benefits for the local and national economy".

Mr. Meaby continued, "This is an exciting time for Limassol and Cyprus and DP World Limassol is focused on delivering a long-term legacy creating employment opportunities and helping Limassol reach its potential of becoming a fully-served home port for cruise ships".

www.dpworldlimassol.com

MedCruise contact: Charles Meaby
charles.meaby@dpworld.com

Ancona

The Arch of Trajan



Ancona is entering the design phase for a new terminal suitable for handling Oasis-class ships estimated at €20m for the building of a new berth and access which the port authority is undertaking. An open tender for building a terminal with private funding expected to be ready in 2020, follows.

Ancona is situated in the middle of the Italian Adriatic coast and is a major passenger hub for ferry routes to Greece, Croatia, Albania and Turkey.

The port has berths of varying lengths up to 320mtr.

Ancona is now leading the Central Adriatic Ports Authority comprising the ports of Pesaro, Falconara, Ancona, S. Benedetto, Pescara and Ortona.

A popular site to visit in Ancona is the Arch of Trajan, a Roman Triumphal arch erected by the Senate and people of Rome in the reign of Emperor Trajan. It was built in honour of that Emperor after he expanded the port of the city out of his own pocket, improving the docks and the fortifications.

MedCruise contact: Guido Vettorel
vettorel@porto.ancona.it

Barcelona

Mar Perez at Adossat Pier



In the first six months of 2017, cruise traffic in Barcelona grew 1.9% with the full year expecting to finish on around 800 calls and 2.7m passengers.

Carnival Corp. & plc's second cruise terminal at the Port of Barcelona—a €30m facility due to open in 2018—is designed to handle its next-generation ships powered by clean-burning LNG.

Construction officially began in July 2016, and once complete the terminal on the Adossat Wharf will increase Carnival Corp.'s passenger capacity at the port, which is used

by eight of the company's 10 brands as both a destination and homeport. Carnival Corp. is expecting to accommodate more than 1m passengers there once the second terminal opens.

Before the summer is out, AIDAperla will start receiving LNG for power during port stays in Barcelona.

This year, 61 AIDA calls are scheduled at the port, including 31 from AIDAperla.

MedCruise contact: Mar Perez
mar.perez@portdebarcelona.cat

Bastia/North Corsica

Seabourn Encore in Bastia



The port of Bastia is launching a new shore excursion in 2018 around organic essential oils and cosmetics.

Overhanging the beautiful fishing village of Erbalunga and the Cap Corse, take a little walk in the 'maquis' and learn how to recognise the different wild aromatic plants. Back to a local distillery, to find out how the essential oils are extracted, why the Mediterranean ones are so precious and how to use them in your daily life!

Another nature and active shore excursion centres around a bike ride along the lagoon of the Nature Reserve of Biguglia, situated 10 minutes from Bastia and the largest area of water in Corsica.

Separated from the sea by a narrow stretch of land, the Nature Reserve covers an area of 18km² and teeming with 127 species of birds including the purple heron, green cormorant and kingfisher and various plants including rare species such as African tamarisk, alder, and cork.

This shore excursion can include a visit to a local brewery to discover the local chestnut beer.

Last but not least, a visit to the "Conca d'Oro" taking its name from the thick mist which sweeps over the region. It has for centuries been one of the most fertile parts of the island, now reputed for its wines from Patrimonio. The village of Patrimonio is an ancestral land of winegrowers since the Roman era, which AOP is a label of high quality for its 35 domains, mostly organic.

In 2017, Bastia and North Corsica Ports (Calvi, l'Ile-Rousse and Saint Florent) will receive 77 calls, including eight maiden calls and 38 000 passengers.

In 2016, 78 ships and 46,902 passengers visited the four ports.

MedCruise contact: Anne-Marie Spinosi
am.spinosi@bastia.port.fr

Oosterdam in Calvi



Cagliari



Cagliari is projecting 40% rise in passengers this year with 130 ships and 430,000 passengers as MSC Cruises and Costa Cruises are undertaking partial turnarounds each week.

In early May, five ships visited in one day bringing 12,000 passengers between them

and proving that the local infrastructure is now ready to accept multiple vessel calls, noted Valeria Mangiarotti, marketing manager Port of Cagliari.

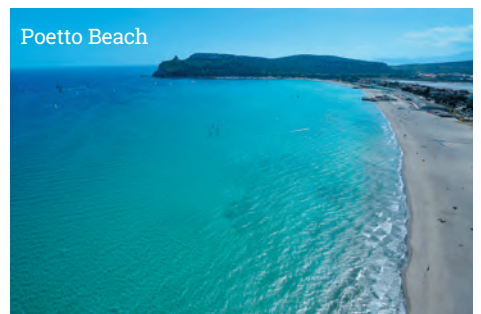
The Rinascita Quay, located in between Sabaudo quay and Ichnusa quay, includes a surrounding area of 450mtr for

accommodating two large ships.

Cagliari is known as City of Winds and overlooks the sea. The old medieval part of the town (called Castello in Italian) with its narrow streets, lies on the top of a hill, with a view of the Gulf of Cagliari overlooking the port and plain below. Founded by the Pisani in the 13th Century, it was fortified to protect the city centre.

Closeby is Poetto Beach stretching 8km and is the most popular beach in Cagliari for its beauty and proximity to the city centre.

MedCruise contact: Valeria Mangiarotti
valeria.mangiarotti@porto.cagliari.it



Cartagena



Cartagena now boasts a cruise quay 700mtr in length following the official opening of the new extension this May. Around 230,000 passengers are expected to visit the Spanish southeastern port this year on 150 calls. The autumn season is its busiest with more vessels expected in October than there are days in that month.

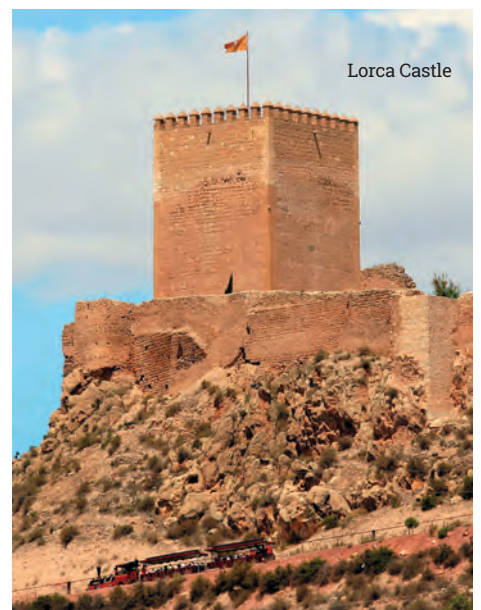
Located over the ruins of an impressive castle, the Fortress of the Sun, Lorca is known as a Baroque city. The city was the frontier between the Christian kingdom and the Muslim world of Granada.

The Espolon Tower is an interpretation centre that invites visitors to live a cultural experience through its history. Other

important archaeological discoveries within the fortress of Lorca, includes the well preserved remains of a Jewish Synagogue from the 15th century.

In Lorca, you may enjoy centuries of a crafts tradition. Examples of this are the Embroidery Museum, or the Crafts Neighbourhood, where you may buy and learn the oldest techniques of gold and silversmith.

MedCruise contact: Hortensia Sanchez
hortensia@apc.es



Ceuta



Ceuta is a Spanish and European city in the North of Africa. It links two continents and sheltered in the middle of the Straits of Gibraltar, where the waters of the Atlantic and Mediterranean meet.

Ceuta has spent €3m on upgrading its city centre Molo Espana berth, located just 100mtr from the city centre and its vast range of tax free shops.

The investment includes a new security system, improved traffic flow, signposting and landscaping.

12 cruise ships are expected in 2017 and 11 booked to date in 2018.

Key advantages are it is a non European port

status, VAT free on all purchases, competitive pricing for quality bunkering and efficient port services.

It is also a perfect location for exploring Morocco and the UNESCO-listed World Heritage site of the medina of Tetouan (40 minutes away by bus).

The Port Authority has plans to expand its facilities to accommodate larger ships (up to 330mtr in length depending on weather conditions) at the Espana Cruise Terminal.

MedCruise contact: Victor M. Jiménez
victor@puertodeceuta.com

Corfu

Essential Corfu the Pocket Guide has been published by the Corfu Port Authority and will be handed out to all visiting passengers this summer when they arrive at the quayside.

The small pocket guide contains 96 pages of useful information for tourists and includes a fold out map on the inside cover showing the location of the Cruise Terminal to the Old Town and its multiple tourist attractions.

The introduction to the Getting Around section states 'Even someone who knows nothing about Corfu will understand on setting foot here that this is no small island of the kind that can be exhaustively toured in a matter of a few hours. The Old Town, the long coastline that forms beautiful beaches, the hilly evergreen terrain, the traditional villages all invite the traveller to ramble, and to make one promise on leaving to return and get to know better this multifaceted place.'

There are sections on shopping, culture, eating and drinking, plus a detailed section on sightseeing in Corfu Town – a UNESCO World Heritage Site – and also further afield plus an index of useful contacts.

MedCruise contact: Aris Batsoulis
aris.batsoulis@corfuport.gr



Aris Batsoulis, development director Corfu Port Authority with the new Pocket Guide for visiting cruise passengers.

Constantza



Azamara Quest, Prinsendam, Golden Iris and Amadea are among cruise ships visiting the Romanian Black Sea port of Constantza this year.

In ancient times it was called Tomis, and the city was settled in the 6th century BC by Greek merchants as a sea port. It was later developed by Romans and renamed after the Emperor Constantin I. Constantza is also the city where the Roman poet Ovid spend his years in exile, and where he died.

After more than 300 years of Turkish rule, the modern development of the city began and today it is the biggest harbour of Romania. There are several synagogues and mosques, an orthodox cathedral, and a statue of Ovid, as well as many Roman and Byzantine remains, like the ruins of the ancient Greek fortress of Histria.

For cruise passengers visiting the city for the first time, of special interest is the Archaeological Museum which houses 24 sculptures of exceptional artistic value including the marble white bust of Issis, the Glykon Serpent, the Thracian Cavalryman and others. The Roman Edipichium has a 700sq mtr mosaic floor dating back to the IV century AD.

The major resort near Constantza is Mamaia, situated just to the north between a magnificent 4.5 mile long beach of fine sand and a lake.

MedCruise contact: Teodor Patrichi
tpatrichi@constantza-port.ro



Heraklion

The port of Heraklion has a 5,000 year old historic and cultural presence in the Mediterranean. Nowadays, the Heraklion Port Authority S.A. has been upgrading its structures so as to guarantee the safest facilities and the highest level of services for every cruise ship passenger.

The Port of Heraklion offers highly competitive services to both cruise ships and passengers, while the upgraded infrastructure, facilities and capabilities of the port offer high added value services for the local economy and national economic growth. There are frequent shuttle buses, including the transportation of people with disabilities, providing transport to the Passenger Station, where an interactive

information platform of Heraklion city is available. Close by is the Central Bus Station and taxi station for urban and interurban transfers. Information material for the city of Heraklion is available.

Over the last five years, several large capacity cruise ships have visited Heraklion Port such as the Carnival Vista, Ventura, Royal Princess, Costa Magica, MSC Splendida and MSC Orchestra. During 2017, we are welcoming MSC Fantasia, Azura, Royal Princess, and MSC Splendida among others, since the Heraklion

Port has suitable water depths and meets all the necessary standards to approach Mega Liners.

In 2017, 92 cruise ships have called at the port of Heraklion so far and according to estimations, 42 cruise ships are expected to call in the rest of the year. Nine of them are first time callers. In total 225,000 passengers (max. capacity) are expected to visit. Furthermore, TUI Cruises has scheduled 3 homeport calls at the end of September and at the end of October.

The port of Heraklion will soon be presenting the new spacious (1,200sq mtr) Tent Cruise Terminal on Quay IV



– V, which will facilitate the procedures of homeporting.

A popular shore excursion is to the archaeological site of the Minoan Palace of Knossos, the largest and most spectacular of Minoan Palaces, the capital and the centre of the Minoan civilization with remains dating to the 2nd century BC. Also Heraklion Archaeological Museum, one of the largest and most important museums in Greece, and among the most important museums in Europe. Also excursions to Cretan traditional villages and the countryside of Crete to learn about local culture and products.

MedCruise contact: Kyriakoula Kampana
cruise@portheraklion.gr



Istanbul

The cruise port of Istanbul, known as Galataport, located in the old city is undergoing a major reconstruction.

Further to the privatization of the port, Doğuş Group, one the largest conglomerates and Bilgili Holding, a leading actor in real estate and tourism industries in Turkey, joined forces to re-develop a unique port area, protect the historical heritage and open the old custom waterfront to the public.

Galataport will feature 1.2km of coastline, over 110,000sq mtr total area and approximately 400,000sq mtr of construction area. The terminal's capacity will be increased by 140% and will cover 20,000sq mtr across two floors.

The aim is to open this prime location to cruise passengers, tourists and locals alike. For

that purpose, the terminal building and the whole cruise operations will be moved to 8.20mtr below ground level.

In addition, customised underground gangways will give access to the -1 floor for a smooth and fast passenger flow (pictured right).

The custom areas and ISPS boundaries will be delimited thanks to hatches, which will be positioned along the pier.

The new waterfront district and port will be in line with the trendy atmosphere of Karaköy and will be a major meeting point for culture, art, gastronomy and shopping, together with a luxury hotel chain.

MedCruise contact: Figen Ayan
fayan@dogusgrubu.com.tr



Kusadasi/Bodrum/Antalya



Kusadasi

Situated on the west coast of Turkey, the cruise port and beach resort town of Kuşadası is the gateway to Ephesus, which is among the most visited ancient cities in the Mediterranean. With its two finger piers Ege Port Kuşadası can berth up to four large vessels, at a time. The completely renovated Scala Nuova Village at the port, offers exotic, colourful shops, chic cafés, bars and

restaurants tailored exclusively for cruise passengers.

Situated on a peninsula surrounded by the Aegean Sea, Bodrum is one of the most attractive coastal cities in Turkey. Bodrum Cruise Port features a finger pier, which can accommodate the world's largest cruise ships, thanks to its pier extension in 2011. The port is located a brief stroll from the city centre.

Bodrum boasts several major historical sites, including the Castle of Saint Peter, the Museum of Underwater Archaeology, King Mausolus' Mausoleum (one of the seven wonders of the ancient world), and a Roman amphitheatre. The surrounding area is also known for the enchanting villages of white-washed houses trimmed with signature purple bougainvillea, or the miles of sandy beaches and myriad water sports on offer.

Given its proximity to a major international airport, a wide range of hotels and a variety of important archaeological sites such as Aspendos, Perge and Side, Antalya Cruise Port has all the appeal necessary to be a key homeport on the Eastern Mediterranean. Antalya is the number one holiday destination in Turkey hosting over 110 million tourists yearly.

Kuşadası and Bodrum cruise ports have been awarded 'Green Port' certification in recognition of their environmental and corporate responsibility credentials. The two cruise ports are the first in Turkey to achieve this milestone.

MedCruise contact: Ceylan Erzi
ceylane@globalportsholding.com

Lisbon



Lisbon Cruise Terminals (LCT), a privately-owned company that operates the cruise facilities in the Port of Lisbon, is building the new Lisbon Cruise Terminal planned to be fully operational this summer.

Resulting in an overall investment of around €22m, it features a total area of 13,800 sq mtr and a berth of 1,490 mtr long, able to receive vessels of various types and sizes with a draft up to 12mtr.

With this new Terminal, the Port of Lisbon Authority estimates current traffic of more than 500,000 passengers annually could double in the next ten years. The new facility will promote the growth of turnaround operations, which will result in a greater impact on tourism in the region, with more benefits for the economy.

The new facility also includes 360 car parking spaces; 80 bus/taxi parking spaces; ship storage area, supplying services;

automated gangway system; ISPS fully compliance, latest CCTV technology and up to seven XR inspection lines. Also available; waste management facilities, Duty Free Shops, VIP lounge and Cafeteria; viewing platform; luggage storage and airport express service, free Wi-fi, crew support services and others.

MedCruise contact: Ana Lourenco
alourenco@portodelisboa.pt

Marseille

Marseille has the capacity to handle six mega-cruise ships simultaneously, with no size limit and with a draught of almost 15mtr, plus a berth for smaller luxury cruise ships at La Joliette, right by the city centre.

For cruise companies, the list of advantages doesn't stop there, however. Anticipating the arrival of even bigger ships, the Grand Port Maritime de Marseille is investing several million Euro in widening

the main northern channel and enhancing berthing safety in high winds. The cruise companies will also benefit from the three dry docks able to cater for any ship up to 450mtr in length, with the commissioning the No.10 Dry Dock being the largest in the Mediterranean, and a comprehensive range of technical support services allowing companies to schedule maintenance stops with the minimum impact on operations.

A total of 12 million passengers have passed through Marseille in 20 years, the fastest growth anywhere in the world, producing a return of €1.5bn to the region's economy.

Between April and November, an average of 5,000 passengers pass through Marseille each day, with peaks of 6,000 in the height of summer, but they are also coming in winter, with an average of 2,000 passengers per day.

MedCruise contact:
Christelle Maubec
cmaubec@marseille-cruise.com



Rijeka



Quaternarius is the Latin name for a place combining four extremes: mountains from the north, islands from the south, rocky coast from the east and a large peninsula from the west, with the clash of the south and north winds, the east and west commercial, customary and civilisation influences.

This is Kvarner region, and at the centre of Kvarner is Rijeka. Rijeka is the third largest city in Croatia in a region which boasts an incredible combination of sea and mountains.

Diversity is a characteristic of this region. In this strange end of natural contrasts, as well as the symbiosis created between nature and man, Kvarner can boast the longest tourist tradition that has been in the making for 160

years. Kings and emperors used to come here and this region is chosen by businessmen and authentic hedonists alike. The city is known for its hospitality, the people of Rijeka make every guest an old friend in the blink of an eye. The city's museums guard a great portion of the city's history with the Maritime and Historical Museum in the Governor's Palace bearing witness to Rijeka's seafaring tradition.

Besides very good sea connections, Rijeka is only half an hour's drive from the border with Slovenia, an hour from Trieste and 1 hour 30 minutes to reach Croatia's capital city of Zagreb.

MedCruise contact: Snjezana Papas
snjezana.papas@portauthority.hr

Piraeus



Piraeus Port Authority (PPA) is investing €294m over a five-year period to upgrade its infrastructure and help increase its competitiveness in the East Med cruise sector.

COSCO Shipping gained a majority stake in Piraeus Port Authority in August 2016.

A significant part of this investment will support Greece's cruise sector as they include the expansion of the Southern port with capacity for four new cruise berths, up to 400mtr each for new generation ships.

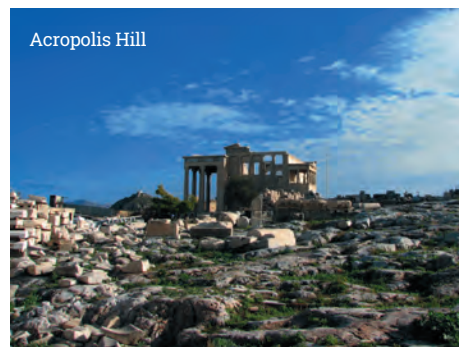
The plans also include the development of hotels, shopping malls, restaurants and other auxiliary services designed to establish Piraeus as a key East Mediterranean cruise hub.

Currently, Piraeus offers 2.8km in quay length with a draft of up to 11mtr tide free. It has between 9-11 simultaneous berthing places. The expansion plans would add a further 1,65km of quay length further strengthening the port's capacity by roughly 50%.

The classical and still most popular 4-hour shore excursion remains the visit to Acropolis which is considered the crowning jewel of Athens. On top of the Acropolis is the Parthenon, the 'architectural masterpiece of the golden age' and then a stroll in the neighborhood of Plaka for shopping.

Other popular destinations are Athens and Cape Sounion with lunch, Athens and the new Acropolis museum, with its spectacular café and restaurant. Acropolis of Ancient Corinth and the Canal Cruise, and Delphi, the museum and the theatre.

MedCruise contact: Theodora Riga
commercial@olp.gr



Toulon-Var Provence



The Ports of Toulon Bay are hosting the 51st MedCruise General Assembly taking place between October 11-14, 2017.

The South of France destination is focussed on delivering a high standard of service for visiting cruise ships and passengers.

The CRUISE FRIENDLY initiative which pools local shop owners, tourism, leisure and culture providers to aim for the same goal: to deliver the best experience ashore for cruise visitors, is growing.

Started in 2013 with 50 partners, it now boasts more than 140 partners and is duplicated in some other ports of the Var Provence network and beyond, as it is also running in popular excursion locations in the area, such as Bormes les Mimosas and Le

Castellet, informs Delphine Beudin, head of cruise business development Ports of Toulon Bay.

MedCruise contact: Delphine Beudin
delphine.beudin@var.cci.fr



Tenerife ports



2018 is set to be a milestone for Ports of Tenerife as it looks to welcome 564 ships and over 1 million passengers boosted by AIDAprima turnarounds. The ship will be the first cruise to be provided with LNG in the port of Santa Cruz de Tenerife.

Several lines are also undertaking turnaround operations in Tenerife including Pullmantur's Horizon, AIDAblu, TUI Discovery 2 and Thomson Dream.

Santa Cruz de Tenerife is increasing its role as a prime port for alongside cruise ship repairs.

The Canary Island port already established itself as a centre for offshore rig repairs and

now offers repairs for cruise ships like 137mtr long Ocean Endeavour earlier this year.

A Thomson Cruises' ship is scheduled to undertake repair work at berth in Tenerife in November 2017 and Fred Olsen Cruise Lines has used the port for general repair and painting.

More than 30 companies specialising in all types of ship repair and maintenance are located in the port of Santa Cruz de Tenerife which received 290 calls and almost 560,000 passengers last year.

MedCruise contact: Airam Díaz Pastor
adiaz@tenerifeport.org

Taranto



Located along the longest coastline of any region in mainland Italy, with a privileged position in the heart of the Mediterranean Sea, Taranto will take you to its fairy-tale scenery, extremely rich in history, stunning coastal landscapes and fabulous food.

Thanks to its new Multipurpose Service Center and to the renovated berthing quay - intended to be carried out to improve cruise traffic and ready before next Summer - the Magna Grecia capital city is destined to become a homeport for cruise lovers and to host a passenger terminal to embark and disembark travellers visiting the Ionian City. In addition, the airports of Bari and Brindisi - respectively situated at 90 and 75km from the Port of Taranto - the airport of Grottaglie is at only 20km from the city and is directly connected to the seaport. Passengers arriving at the port of Taranto can easily reach, even on foot, a list of attractions that are worth a visit!

The city - founded in 706BC by a young Spartan warrior "Falanto" - became the capital of Magna Grecia, the cultural and commercial centre of a civilization envied by the Romans. The local Archaeological Museum houses several Greek artefacts whilst the impressive Aragonese Castle - built in the 15th century and open daily for guided tours - dominates the city skyline made unique by the Swing Bridge connecting the Old Town to the downtown area. The gulf of Taranto is also a haven for dolphin watching as the coast offers a memorable experience to discover the natural environment combining scientific research and tourism activities. The surrounding area is also the ideal location for trekking, hiking and horse-riding, the perfect place for nature lovers to enjoy the enchanting ravines of the valley of Itria, a land dotted with many stunning masserie and dried stone-walls gently lapped by Mediterranean maquis. An hour's drive from Taranto is one of the most ancient cities in the world, Matera where the ancient cave houses "Sassi" (UNESCO World Heritage Site) are now being renovated and made into boutique hotels.

MedCruise contact: Silvia Coppolino
silvia.coppolino@port.taranto.it

Valencia

The Port Authority of Valencia (PAV) is planning a new cruise terminal, to be ready mid-2019 and will simultaneously accommodate two vessels of up to 4,000 passengers, combining home port and transit operations.

PAV's investment plan includes Euros15m for the construction of the terminal, which is expected to be financed in a PPP model with PAV allocating Euros 7.5m and the successful bidder of the tender the remaining amount.

In 2016, the port of Valencia received 403,264 cruise passengers from 181 calls, a figure that represents a year-on-year growth of 7.66%.

This year, 440,000 cruisers on 203 ship visits are expected with a target of 250 calls and 600,000 passengers by 2020.

The Port of Valencia has two quays for cruise ships with a length of up to 300mtr and three more berths for vessels of more than 300mtr.

The local tourist offer, developed jointly between the Port Authority of Valencia and Valencia Tourism, is wide and very varied. This year, in addition to the traditional tours of Albufera Natural Park, the historic centre or the City of Arts and Sciences, new options include a Religious Art Route, with a visit to the Cathedral and other churches such as the recently restored San Nicolás or San Juan del Hospital; the Silk Route with visits to the Silk Market, the recently restored Silk Museum and the neighbourhood of Velluters, the ancient part of the city where the silk workers used to produce true artworks in silk.

MedCruise contact: Francesca Antonelli
fantonelli.externo@valenciaport.com



Valletta



Valletta Cruise Port, a subsidiary of Global Ports Holding has been named as Top-Rated Mediterranean Cruise Destination in Cruise Critic's 2017 Cruisers' Choice Destination Awards.

Cruise Critic's annual awards are based entirely on consumer ratings submitted with reviews on CruiseCritic.com over the year. T

The awards name the top cruise destinations across 15 regions worldwide.

This year Valletta will welcome more than 330 port calls, expecting in excess of 700,000 passenger movements.

Valletta Cruise Port is operating its second regular homeporting operation, with P&O Cruises' Oceana, also with a weekly homeporting operation by TUI Cruises. Norwegian Cruise Line's Norwegian Spirit is another regular visitor with weekly turnaround calls. In addition, MSC Cruises' Malta-flagged newbuild MSC Meraviglia, which visited Valletta on its maiden call in June 2017, is another weekly caller this summer.

Furthermore 2017 is the run-up year to Valletta 2018, where Valletta will hold the title of the European Capital of Culture, with the calendar of events adding exciting layers to what the destination already offers.

MedCruise contact: Stephen Xuereb
sxuereb@vallettacruiseport.com



Zadar



Traffic at Zadar is on an upward curve with a record 130,000 passengers in 2017 expected to rise to 180,000 next year - more than a 35% increase. The new port area of Gazanica, in operation for two years, can accept any size vessel and a new 17,000sq mtr two storey terminal is due to be operational by end 2018 with a 20 year concession tender due in the second half of this year.

Zadar with its international airport 5km away is looking for more homeporting business to add to Artemis and Athena which homeported between November and March.

Zadar's fortified city walls and gates have now been confirmed as UNESCO protected World Heritage sites.

The decision was confirmed at the 41st meeting of UNESCO's World Heritage Committee in Poland in July.

Once the largest city-fortress in the entire Republic of Venice, Zadar's city defence walls allowed it to keep more of its independence than most of its neighbouring cities, and meant that it was never captured by the Turks.

During its history, Zadar has always been a city in the port and a port in the city. Zadar is over 3,000 years old and a city of culture and beauty. Monuments include St Donat, St Stosija, the Benedictine Monastery, St Simon, St Krsevan. Attractions include the Monument to the Sun, the Sea Organ. There are five national parks within reach: Paklenica, Plitvice, Kornati, Krka and Velebit.

MedCruise contact: Djoni Stambuk
dstambuk@port-authority-zadar.hr

Why cruise to YOUR PORT?

We asked the personalities representing MedCruise ports and destinations what is so special about their port (and in less than 100 words!).

Constantza

With a Black Sea that is 'neither black nor bleak', the Port and City of Constantza bring colour and warmth to any cruise vessel coming to the western coast of this fascinating sea. Just think of meeting a millenary past through vestiges of Greek and Roman history, a glimpse of the flourishing commerce that the Genoese Lighthouse has been guarding for centuries, a unique combination of both lay and religious monuments and constructions of various architectural styles alongside with the Archaeological Museum, the Fine Arts Museum or the Romanian Folk Art Museum, make up a nice and attractive cultural cocktail to be tasted at large.

Teodor Patrichi, Port administrator, Constantza Port



Thessaloniki

An ancient city, named after Alexander the Great's sister, the second most important Byzantine city which is at the same time a modern, multicultural and vibrant city.

Must sees:

- To visit the city's UNESCO heritage Monuments of the city itself and the UNESCO heritage sites close to the city (Vergina, Philippi, Meteora, Mount Athos)

- To live one day in a vibrant city, full of young people, shopping areas, close to beautiful coastlines, wineries, spas...

Stella Fassa, Strategic Planning, Thessaloniki Port Authority

Tarragona

Tarragona is a very charming city with the recognition of UNESCO. In the area you can enjoy a wide variety of excursions from the cultural UNESCO sites and modernism in Reus, to leisure with three theme parks, wine cellars, and seven golf courses. It's a non-congested destination and it is generating positive reactions from the visitors.

Genoveva Climent, Commercial director, Port of Tarragona



Palermo

Welcome to Sicily!

There are definitely many reasons to cruise and visit Palermo: the sights, the sounds, the art, the tradition, the food, the colours, the markets. You can't miss!

Palermo offers many attractions to see but if you really want to experience the city walk around, feel the energy and get lost on the side street and above all else – eat. Enjoy.

Daniela Mezzatesta, Promotion & communication department, Palermo Port



Dubrovnik

Once in your life you need to visit Dubrovnik which is the mirror of a history and a world stage of again and again discovered beauties'

Kristina Laptalo, Head of controlling department, Port Authority of Dubrovnik

La Spezia

La Spezia: your new port of call where you can meet Italian beauty, art and culture.

Fabrizio Bugliani, Marketing and foreign affairs office, East Ligurian Sea Port Authority, Ports of La Spezia and Marina di Carrara



Rijeka

Rijeka is a unique port offering a wonderful array of exciting and beautiful tours, along with stunning beaches and an abundance of history. Rijeka and its surrounds have everything that a first-rate tourist region needs: landmarks, rich cultural programs, entertainment, fabulous beaches, romantic towns and villages and stunning nature. Rijeka has asserted itself as a town of culture, offering creative art shows and refreshing entertainment. Rijeka has been chosen, by a commission of independent experts, as one of the two European Capitals of Culture in 2020 with the name: Port of Diversion. Rijeka will share the European Capital of Culture 2020 title with Galway (Ireland).

Rajko Jurman, Manager for cruising affairs, Port of Rijeka



Castellon



- Tailor-made to suit both cruise lines and passengers as there is no congestion at the port or the destination.
 - Possibility of a different holiday within the rural landscape.
 - Privileged gastronomy tastings with PDO products (Protected Denomination of Origin) and Michelin starred chefs.
- Susana Soria, Cruise & business development area manager, Port of Castellon**

Split

The pedestrianized ancient UNESCO World Heritage-listed city of Split offers numerous cafes, taverns and restaurants for tasting local cuisine such as prosciutto, sheep's cheese, fish and stewed lamb or beef as well as fine wines from Dalmatia region. Nearby are the ruins of Salona – the ancient Roman Capital of the Province of Dalmatia, the historic Fortress of Klis, and the UNESCO listed picturesque town of Trogir. For the adventurous, an unforgettable experience is rafting on the mighty Cetina River and the Krka River National Park with magnificent waterfalls.

Joško Berket-Bakota, Assistant managing director, Split Port Authority



Heraklion

The port of Heraklion has a 5,000 year old historic and cultural presence in the Mediterranean. Nowadays, the Heraklion Port Authority S.A. has been upgrading its structures so as to guarantee the safest facilities and the highest level of services for every cruise ship passenger.

The updated statistics and our communication with cruise ship companies as well as the culture sightseeing opportunities is the best evidence for the achievement of great results in the domain of cruise tourism.

Apollon Filippis, Chairman and managing director, Port of Heraklion



Valletta



Long considered to be a microcosm of the Mediterranean, with 7,000 years of recorded history and a favourite with travellers seeking an authentic island experience, Malta offers moments of complete relaxation that can be combined with an exploration of the many cultural, artistic and natural treasures. Malta strikes the right balance between traditional hospitality and a cosmopolitan spirit. And 2018 is a particularly excellent year to visit, with Valletta holding the title of the European Capital of Culture.

Stephen Xuereb, CEO, Valletta Cruise Port and, COO, Global Ports Holding

Kotor

Simply as that, Kotor is one of the most beautiful towns in the world protected by UNESCO. Settled in Boka Bay, decorated with two amazing islands, bordered with mountains and rich in beauty, will make you fall in love with it at first sight. History, culture and tradition through the centuries are telling stories that you will never forget.

Ljubo Radovic, Assistant CEO, Port of Kotor



Azores

Azores is powered by nature! It's a unique voyage to amazing and unspoiled landscapes! Azores: a protected harbour between two continents! The breathtaking Azores are a unique combination of flavours, colours and scenarios!

André Velho Cabral Moura, Cruise manager, Portos dos Acores



Kavala

Visiting the port of Kavala is a journey through history beginning from the first Christian times until nowadays.

Besides the wonderful tourist attractions there are tours that encompass History (The Ancient Theatre and Byzantine castle of Kavala), Religion (in the footsteps of the Apostle Paul), Nature (Delta Nestos, Alistrati Cave), and Topics of special interest (wineries, spas, mud baths). The port of Kavala provides security (ISPS), easy access for cruise ships and direct access for passengers to the city for morning to night entertainment, where the visitor can relax side by side with the locals in an authentic environment.

Gregory Kekropoulos, Port facility security officer, Port of Kavala



Naples

Those arriving in the port of Naples have in front of them the salient signs of the entire city. Many centuries appear before, all together, concentrated in a single panoramic view.

Nature and culture, art and life, light and dark, sacred and profane, are the extremes between which bounces the profound identity of Naples.

Everybody knows this saying...See Naples and die...

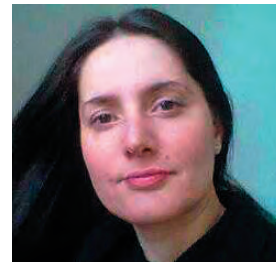
Barbara Casolla, Cruise development executive, Naples Port



Sibenik

Sibenik is a characteristically atmospheric Adriatic town with a laidback feel, its magnificent medieval heart is gleaming white against the blue waters of the bay. It will charm visitors with culture, nature, gastronomy, sports and many other possibilities. Travellers will find the town satisfies each need and requirement.

Gordana Mrcela, Marketing specialist, Port of Sibenik Authority



Toulon Var Provence

For cruise lines: for the safest (Toulon is the main Navy base in Europe), best sheltered and thus most reliable option in the French Med. For the guests: to enjoy the

wonders of Var Provence (authentic Provence, most beautiful and sandy beaches, hilltop villages, Provencal way of life and so on, at the heart of both Provence & The French Riviera), and the best hospitality thanks to the Cruise Friendly Hospitality Certification which is now duplicated all around the Var Provence area. So, whoever they are, cruise lines or passengers, for them, Toulon is a smooth port and destination. 'Toulon: Easy to come, hard to leave...'

Delphine Beudin, Head of cruise development, Ports of Toulon Bay/Var Provence Cruise Club



Huelva

- Our location gives us the opportunity to be visited by cruise ships whose routes are through the South Mediterranean, North Africa and North Europe-Canary Islands as well as seasonal change between the Caribbean and Europe.
- Huelva is about halfway between Malaga and Lisbon, one night of sailing from each of these ports (170/200 nautical miles). Also we offer the best discounts on tariffs.

• Our proximity to the monumental city of Seville and the city and province of Huelva itself, with 3,120 hours of sunshine a year and an agreeable and temperate climate that means visitors can live life to the full outdoors, in touch with nature on wide, long, peaceful beaches.

Manuel Vega, Commercial & marketing manager, Port of Huelva



Koper

Koper is a small historic town that can accept all sizes of cruise ships just in the centre of the city. Koper is also a nice gateway for various shorex, reachable from 20 minutes to a maximum of 90 minutes.



Bojan Babic, Cruise terminal director, Port of Koper

Genoa

Genoa offers an eclectic mix of medieval cobbled streets, sumptuous passageways, palazzi and Old Masters artwork, which sit alongside the vibrant Porto Antico, focus on an ambitious successful urban waterfront development scheme, everything seasoned with a vast selection of sublime bars, trattoria, restaurants and listed historic shops. All in a day!

Antonella Rossi, Port promotions and marketing, Ports of Genoa and Savona



Livorno

- Livorno is the port built for the Medici family, the Port for Tuscany, the natural gate to the Tuscan cities of art.
- Landscapes, Art, Nature, Wine and food, Shopping, the sincere welcome and hospitality of local people: cruising to the Port of Livorno, every passenger can experience a custom-tailored excursion, from the more classic to the most alternative one.

- The city of Livorno can offer the visitor the opportunity to relax: walking along the narrow streets and bridges of the Venezia district, cruising along its canals or strolling along the seaside promenade, immersed in the magic light and coloured panoramas depicted by Macchiaioli painters.

Serena Veroni, Marketing & communications manager, Porto di Livorno 2000 s.r.l.



Messina

- The port and the city of Messina have a soul: the soul of the Strait of Messina, cradle of myths and ancient civilizations.
- Messina is colours and scents: the sunlight, the colour of the sea and its scent that changes constantly depending on weather and wind, the smell of its cooking and pastry, the avenues of linden trees in late spring.
- Cruising Messina allows you to enjoy a 360-degree experience thanks to a very diverse and satisfying offer of excursions.

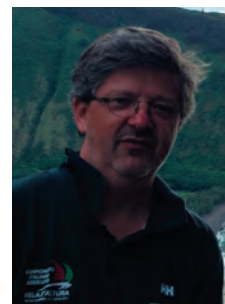
Cristiana Laura, Head of institutional affairs, promotion and external relations unit, Messina Port Authority



Venice

- Major gateway for cruising in the Adriatic and Eastern Med, blessed by its location at the crossroad of the main road, rail and air network, just a few metres away from the city centre.
- Best port facilities
- Cruise lines calling at the passenger port of Venice can count on know-how, flexibility, non-stop improvement of operating efficiency, steady innovation in safety and security.

Galliano Di Marco, Managing director, Venezia Terminal Passeggeri S.p.A.



Portoferraio

It is a people-friendly destination. It is the entrance to that extraordinary assemblage of history, nature and culture called Elba.

Giampiero Costagli, Marketing director, Port of Portoferraio



MedCruise News



L-R: Aimilia Papachristou, Kristijan Pavić, President, Thanos Pallis, Secretary General and Kleopatra Arapi

President: Kristijan Pavić
Secretariat
Thanos Pallis, Secretary General
Email: thanos.pallis@medcruise.com
Contact: Aimilia Papachristou
Email: aimilia.papachristou@medcruise.com
Contact: Kleopatra Arapi
Email: kleopatra.arapi@medcruise.com



facebook.com/medcruise.association



[@MedCruisePorts](https://twitter.com/MedCruisePorts)



[MedCruise](https://www.linkedin.com/company/medcruise)



MedCruise

10 Akti Miaouli Str.
Piraeus 18538, Greece
Tel: +30 210 40 90 675
Fax: +30 210 45 50 286
secretariat@medcruise.com
www.medcruise.com
www.medcruise.cn
#PortsTogether

September 2017 | Issue 54

MedCruise Members

Alanya, Turkey

Ancona, Italy

Ashdod, Israel

Azores, Portugal

Balearic Islands, Spain

Barcelona, Spain

Bari, Italy

Bastia/North Corsica, France

Brindisi, Italy

Burgas, Bulgaria

Cagliari/North Sardinia ports, Italy

Cartagena, Spain

Castellón, Spain

Ceuta, Spain

Civitavecchia, Italy

Constantza, Romania

Corfu, Greece

Cyprus ports, Cyprus

Dubrovnik, Croatia

Egyptian ports, Egypt

French Riviera ports, France

Genoa/Savona, Italy

Gibraltar

Gioia Tauro, Italy

Heraklion, Greece

Huelva, Spain

Igoumenitsa, Greece

Istanbul, Turkey

Kavala, Greece

Koper, Slovenia

Kotor, Montenegro

Kusadasi/Bodrum/Antalya, Turkey

La Spezia, Italy

Lisbon, Portugal

Livorno, Italy

Madeira ports, Portugal

Málaga, Spain

Marseille, France

Mersin, Turkey

Messina, Italy

Monaco

Motril-Granada, Spain

Naples/Salerno, Italy

Odessa, Ukraine

Palamós, Spain

Palermo, Italy

Patras, Greece

Piraeus, Greece

Portimão, Portugal

Portoferraio, Italy

Portofino, Italy

Rijeka, Croatia

Sète, France

Sibenik, Croatia

Souda/Chania, Greece

Split, Croatia

Taranto, Italy

Tarragona, Spain

Tenerife ports, Spain

Thessaloniki, Greece

Toulon-Var Provence, France

Trabzon, Turkey

Tunisian ports, Tunisia

Valencia, Spain

Valletta, Malta

Varna, Bulgaria

Venice, Italy

Volos, Greece

Zadar, Croatia



Seatrade

Published by Seatrade (UBM (UK) Ltd)

Associate Members

Alfaship

Allegra Montenegro

B&A Europe

Cemar

Council of Sant Carles de la Ràpita

Cruise Services Monaco

D'Alessandro Travel

Donomis Cruise Services

DP World Limassol

Dubrovnik County Port Authority

Hugo Trumphy Srl

Iberoservice

Inter cruises Shoreside & Port Services

Kvarner County Tourism Office

Kyriakakis Travel & Shipping Agency

La Goulette Cruise Terminal

Mediterranean Unique Experience

Medov Srl

Mercantile Marine Shipping (MMS)

MH Bland

Navigator Travel & Tourist Services

Patronat de Turisme Costa Brava

Pérez y Cia

Salamis Organisation

Samer & Co. Shipping

Scandinavian Near East Agency (SNEAL)

Transcoma Cruise & Travel

Tura Turizm

Turisme de Barcelona

Var Provence Cruise Club

World Synergy Travel