

# Cruise Shipping and Urban Development

State of the Art of the Industry and Cruise Ports

14

**Discussion Paper 2015 • 14**

**Thanos Pallis**  
University of the Aegean,  
Greece

# **Cruise Shipping and Urban Development: State of the Art of the Industry and Cruise Ports**

**Discussion Paper No. 2015-14**

**Thanos PALLIS**

University of the Aegean  
Chios  
Greece

May 2015

### **About the Author**

**Dr. Thanos Pallis** is a Jean Monnet Professor in European Port Policy at the University of the Aegean, Greece. He is a regular contributor at OECD, UNCTAD, European Commission, IAPH, AIVP, and ESPO discussions on ports, with its most recent contribution been the OECD report on the prospects of cruise shipping and cruise ports (2015).

Since 2013 he is the Secretary General of MedCruise, the association of more than 100 cruise ports from 20 countries in the Med and its adjoining seas. Beyond his educational and contract research in all five continents, that has produced an extensively cited publication record, Thanos has served as General Secretary for Ports & Port Policy, Ministry of Development, Competitiveness and Shipping, Greece. He is a founding member and co-director of the PortEconomics web initiative. He is the co-author of the books European Port Policy, and the Common Maritime Transport Policy.

---

## THE INTERNATIONAL TRANSPORT FORUM

The International Transport Forum at the OECD is an intergovernmental organisation with 54 member countries. It acts as a strategic think-tank, with the objective of helping shape the transport policy agenda on a global level and ensuring that it contributes to economic growth, environmental protection, social inclusion and the preservation of human life and well-being. The International Transport Forum organises an Annual Summit of Ministers along with leading representatives from industry, civil society and academia.

The International Transport Forum was created under a Declaration issued by the Council of Ministers of the ECMT (European Conference of Ministers of Transport) at its Ministerial Session in May 2006 under the legal authority of the Protocol of the ECMT, signed in Brussels on 17 October 1953, and legal instruments of the OECD.

The Members of the Forum are: Albania, Armenia, Australia, Austria, Azerbaijan, Belarus, Belgium, Bosnia and Herzegovina, Bulgaria, Canada, Chile, the People's Republic of China, Croatia, the Czech Republic, Denmark, Estonia, Finland, France, the Former Yugoslav Republic of Macedonia, Georgia, Germany, Greece, Hungary, Iceland, India, Ireland, Italy, Japan, Korea, Latvia, Liechtenstein, Lithuania, Luxembourg, Malta, Mexico, the Republic of Moldova, Montenegro, the Netherlands, New Zealand, Norway, Poland, Portugal, Romania, the Russian Federation, Serbia, the Slovak Republic, Slovenia, Spain, Sweden, Switzerland, Turkey, Ukraine, the United Kingdom and the United States.

The International Transport Forum's Research Centre gathers statistics and conducts co-operative research programmes addressing all modes of transport. Its findings are widely disseminated and support policymaking in member countries as well as contributing to the Annual Summit.

### Discussion Papers

The International Transport Forum's Discussion Paper Series makes economic research, commissioned or carried out at its Research Centre, available to researchers and practitioners. The aim is to contribute to the understanding of the transport sector and to provide inputs to transport policy design.

ITF Discussion Papers should not be reported as representing the official views of the ITF or of its member countries. The opinions expressed and arguments employed are those of the authors.

Discussion Papers describe preliminary results or research in progress by the author(s) and are published to stimulate discussion on a broad range of issues on which the ITF works. Comments on Discussion Papers are welcomed, and may be sent to: International Transport Forum/OECD, 2 rue André-Pascal, 75775 Paris Cedex 16, France.

For further information on the Discussion Papers and other JTRC activities, please email: [itf.contact@oecd.org](mailto:itf.contact@oecd.org)

The Discussion Papers can be downloaded from: [www.internationaltransportforum.org/jtrc/DiscussionPapers/jtrcpapers.html](http://www.internationaltransportforum.org/jtrc/DiscussionPapers/jtrcpapers.html)

The International Transport Forum's website is at: [www.internationaltransportforum.org](http://www.internationaltransportforum.org)

*This document and any map included herein are without prejudice to the status of or sovereignty over any territory, to the delimitation of international frontiers and boundaries and to the name of any territory, city or area.*

## Table of Contents

1.	Cruise Shipping: State of the Art and Growth Potential .....	4
1.1.	Cruise industry characteristics .....	4
1.2.	Cruise industry organisation .....	12
1.3.	The geography of cruise shipping .....	18
1.4.	Cruise fleet: Renewal and economies of scale.....	24
2.	Cruise Ports: Characteristics, Performance and Competition .....	29
2.1.	Cruise ports: Characteristics and categorisation .....	29
2.2.	Major cruise ports.....	32
2.3.	Specialisation patterns.....	35
2.4.	Governance of cruise ports.....	40
2.5.	Cruise port competition .....	46
3.	Maximising Benefits and Reaching Potential.....	47
3.1.	Economic impact of cruising .....	47
3.2.	A public agenda for sustaining growth and maximising benefits .....	49
3.3.	Limitation of environmental externalities .....	55
3.4.	What type of action might an international public agenda imply? .....	58
3.5.	Concluding remarks .....	60
	Bibliography.....	62

## 1. Cruise shipping: state of the art and growth potential

### 1.1. Cruise industry characteristics

#### *What is cruise shipping?*

Cruise shipping has first established as the transportation of pleasure-seeking upper class travellers on seagoing vessels offering one or more ports of call in the United States and the Caribbean. Today this is a highly efficient global business. Modern specialised ships – radically different from cargo vessels – the use of an increasing number of cruise ports of call and turnaround ports so as to provide their customers excellent in-port and destination experiences, and convenient departures from proximal embarkation cities being fundamental tenets of the industry.

Defined as a mixture of maritime transport, travel and tourism services, facilitating the leisure activity of passengers paying for an itinerary and, potentially, other services on board, and includes at least one night on board on a seagoing vessel having a capacity of at least 100 passengers. Unlike conventional forms of tourism, the transportation (the cruise ship) is the core element of the experience instead of being a simple conveyance. As such, the cruise industry must address multiple considerations related to on-board amenities, itineraries, ports of call, and shore excursions. This takes place in specific markets, each having its own regional characteristics, with the Caribbean and the Mediterranean being the most important.

Since the late 1960s, when specialised vessels of speed and comfort replaced the last liners, cruise shipping has witnessed uninterrupted growth. While the global financial crisis of 2008-09 had a major impact over maritime cargo shipping, cruise lines and cruise ports continued experiencing steadily rising numbers of passengers. It did so even when an unfortunate event, the Costa Concordia loss, created the most sustained period of negative publicity for the industry. The industry managed to "cruise through the perfect storm"<sup>1</sup>, and in 2014 almost 22 million passengers enjoyed a cruise on one of the 296 cruise vessels taking place in one of the cruise regions of the world (North America, Caribbean, South America, Mediterranean, North Europe, Australia, Asia, Africa). Ten years before the number of people that had embarked on a cruise were just 11.8 million.

The modern cruise product is diversified. Throughout its history, the industry has responded to vacation desires of its guests and embraced innovation to develop new destinations, new ship designs, new and diverse on-board amenities, facilities and services, plus wide-ranging shore side activities. Cruise lines have also offered their guests new cruise themes and voyage lengths to meet the changing vacation patterns of cruise passengers and expand demographically the target groups.

Product specialisation has led to distinctive market segments, including budget/contemporary, premium, and luxury cruises, with each type offered on-board vessels with different technical characteristics and associated with different facilities, and services. Cruises of different types are today provided with "floating hotels" accommodating a large number of passengers of different socioeconomic status for at least two days offer itineraries in all five continents, with aim being the provision of pleasure to the cruise passengers rather than the transportation itself.

Itineraries typically last from three days up to 12 days, the average cruise lasting 7.2 days. Beginning and ending at a turnaround port, cruises call at three to five different ports, whereas longer itineraries, even lasting month(s), are not rare. One-day seagoing pleasure trips are not commonly included in the definition of cruising. The cruise itineraries take place via the deployment of vessels in a specific geographic cruise region, with round the world cruises occasionally offered. The deployment flexibility represents a major positive feature as floating assets are easily transferred between markets even within the same calendar, whereas exposure to economic and political conditions and not least seasonality stand as the sustaining challenge to be addressed.

In all regions, ports have developed an interest in advancing their cruise activities. This is not least to the association of cruising with considerable financial contribution to the port cities or nearby touristic destinations. With the rising of the importance of societal integration of ports and the cities they hosted them<sup>2</sup> coinciding with the growth of the industry, cruise became part of respective agendas of port authorities and other port managing organisation. In several parts of the world they have moved from multi-purpose terminals or temporary docking facilities towards specialised terminals, in order to act as ports-of-call, and whenever possible as home-ports hosting the, financially profitable, departure and conclusion of a cruise. A growing interest by third parties, including cruise lines, to invest in port facilities has followed.

Like any other industry, growth has been associated, explicitly or not with a changing regulatory regime. Greater scrutiny from regulatory agents such as the IMO, flag and port state regulators and legislative bodies including the US has been provoked by the Costa Concordia grounding and minor incidents on North American ships. Safety, navigational procedures, accident emergency preparations were issues added to the policy agenda next to the generated emissions and waste handling are part of the agenda. As did the (de)regulatory facilitation of cruise services provision, i.e. via liberalisation of cabotage restrictions. Eventually, societal questions on the magnitude of the activities and potential externalities that they might produce have been expressed at both sides of the Atlantic. The relations of cruise ports and hosting cities are changing.

Passenger growth occurs in the two most popular cruise regions, these being the Caribbean and the Mediterranean Sea. Even though during the first years of the 21st century the latter has grown faster than any other region around the world. It also takes place in secondary markets such as Northern Europe, Alaska and South America. Cruises are an ever more global business as large-scale developments taking place in Asia are of such magnitude that leads many to mark the region as the next major opportunity for the industry to expand, the growth in neighbouring Australia is considerable, whereas Africa is already targeted by some.

As a result, the global economic impact of modern cruises is considerable. Cruise Lines International Association (CLIA), the association representing cruise lines around the globe, estimates that in 2013 a total of 114.9 million onshore visits the approximate 22 million passengers and the crew on board the 296 cruise vessels that cruised them generated USD 52.3 billion in direct cruise sector expenditures at destinations and Sourcing markets around the world. These also include the direct expenditures of the cruise lines for goods and services in support of their cruise operation. These expenditures generated a total (direct, indirect, induced) global output of USD 117.2 billion. The production of this output required the employment of 891 000 full-time equivalent employees who earned USD 38.47 billion in income. Compared to other indicators, the total impact of cruising to the EU has grown by 26% since 2009 comparing to a rise of 14% of the GDP over the same period<sup>3</sup>.

### *Evolution of cruise activities*

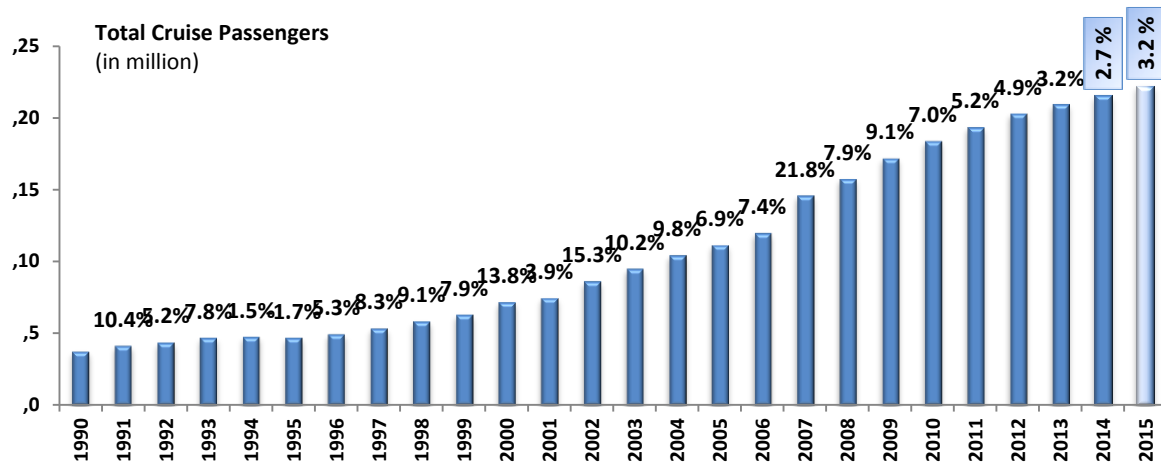
Within the first 14 years of the 21<sup>st</sup> century cruise recorded an admirable growth. A total of 21.6 million people took cruise vacations within 2014. This number is more than double the one recorded a decade before; 10.5 million passengers cruised in 2004. The number of people that cruised at the turn of the century in 2000, was just one-third of today's 7.2 million. Since 1990, over 196.4 million passengers have taken a two or more days' cruise, with each of them visiting more than one port.

**Figure 1.1** visualises the global cruise passenger growth since 1990, when 3.8 million people decided to cruise. The global growth rate of the cruise industry has been enduring and stable, at around seven percent per year in spite of economic cycles of growth and recession. The year 1997 was the first year ever that more than 5 million people took a cruise, whereas 2004 was the first year that more than 10 million people decided to take a cruise within a single year. Over a similar period global tourist arrivals have risen by 57% to an estimated 1.09 billion tourists in 2013. The UNWTO reports that 5% of global tourists arrived at their destinations by water, cruise and ferry<sup>4</sup>.

These trends confirm the remarkable dynamics of the industry and its resilience in the face of the economic, social, political, or any other crises that regularly challenge the tourism sector. Stagnation did not occur even when the Costa Concordia grounding in 2012, generated some catastrophic public relations, when minor incidents on ships operated by leading firms, or environmental challenges (i.e. emissions) were seemingly ready to deteriorate the operating context and growing prospects. Despite the rising insurance costs, the lowering yields, cruise companies managed to gain trust and more passengers on-board.

Looking at the shortest-term comparison, in 2014 the total number of passengers equals to 2.7% higher than the number of those that had cruised the year before. While for other industries this would be an achievement, a note of caution is needed in the case of cruising. This growth means that 2014 was the year with the slowest increase in number of cruising passengers over the last 19 years. Along with some concerns about the externalities produced in some of the most heavily visited cities, the year concluded with some analysts arguing that this is the "end of the beginning" for the cruise industry, and the sector needs to explore the best ways to "move to another level in order to achieve the king of consistently improving profitability that a mature industry is expected to deliver for its stakeholders<sup>5</sup>."



**Figure 1.1: Global Cruise Passenger Growth (1990-2015)**

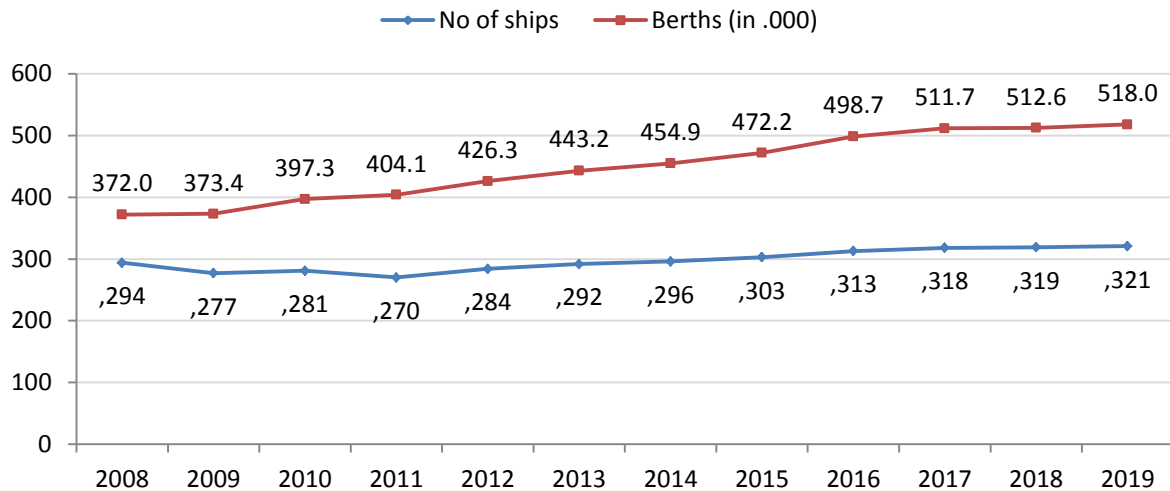
Source: Cruise Market Watch. [www.cruisemarketwatch.com](http://www.cruisemarketwatch.com)

Given the strong consumer interest in cruising, the expansion of destinations and itineraries, and not least the further modernisation of the cruise fleet and cruise product, stakeholders look forward to an additional positive year of growth. Cruise Lines International Association (CLIA) in its 2015 annual state of the cruise industry report is projecting stronger growth for the cruise industry in 2015 than the one portrayed in **Figure 1.1**.

Looking at longer-term projections, the same factors are expected to contribute in sustaining growth.<sup>6</sup> In 2018 global passengers are expected to exceed 25 million for the first time in cruise history, whereas it will take six more to surpass, in 2024, the 30 million unique cruise passengers milestone. This is associated with a renewal of the cruise vessels, and thus the berths offered, with the latter increasing to 790 000 berths in 2024. It is also associated with the resumption of the American market, the continuation of growth in Europe and Australia, and the rapid growth in the China and the rest of the Asian market. If the latter is associated with local brands, the 40 million cruise passengers target seems to be genuinely feasible.

### *Cruise fleet*

A fleet of 296 cruise vessels was deployed worldwide in 2014, having a passenger capacity of 21.4 million passengers (**Figure 1.2**). In absolute numbers, the global fleet of cruise vessels remains rather stable over time. Just two vessels less (294) were deployed in 2008, only 270 in 2011. The deliveries in 2015 will raise the total to 303 and the order book suggests that 321 cruise vessels will be deployed around the globe.

**Figure 1.2: Global Cruise Fleet 2008-2019 (Ships & Berths)**

Source: *Cruise Industry News*, 2014-2015 Annual Report.

The latter number does not include an estimation of withdrawals though, thus should be treated with caution. The fact that the global cruise fleet increased by two during the period 2008-2014 even though 50 new cruise vessels were delivered over the same period, suggests that the rise of the numbers might be questionable. It also gives a clear sign that a major fleet renewal has been a core foundation of the continuous growth of the cruise industry, and this story is hardly evident when noting the numbers of ships.

Emphasis on the number of vessels would be misleading for another reason as well. Major cruise vessels are becoming bigger than in the past. The two vessels hosting more than 6 000 passengers, the eight vessels with a capacity of more than 4 000 passengers and 19 of the 37 cruise ships having a capacity of more than 3 000 passengers have been delivered since 2009. The total of berths deployed increased by 26.5% within the last seven years, from 373 400 in 2009 to 472 200 in 2015.

The rise of the passengers cruising per year from 7.2 million in 2000 to almost 22 million in 2014 has been the outcome of the renewals and rising capacity scale of cruise vessels, the improvements in shipbuilding, ports, and the growing interest of destinations that allow for planning of more complex itineraries, the sophistication and specialisation of the product offered. Cruise ships offer a new generation of onboard features and a world of innovation and services that exceed the expectations of a growing population of travelers. They also offer facilities to accommodate family members of all generations traveling together or even passengers cruising solo expanding also the demographics of potential cruisers. Cruisers can easily find a cruise line, ship, stateroom and itinerary to perfectly suit them. Notably, 89% of cruisers were highly satisfied with their cruise vacations, and 89% would recommend cruise to a friend<sup>7</sup>. Carnival Cruise Lines, the world's largest cruise company, has renewed the largest fleet in the world with more than 30 new ship additions since 2007. The second biggest cruise company, Royal Caribbean Cruise Lines (RCCL) has led the race towards bigger cruise ships with the Oasis class vessels accommodating more than 6 000 passengers and a crew of 2 000.

The estimated sales revenues for these vessels reached USD 33.8 billion in 2014 (**Table 1.1**). America hosted the major share, 156 cruise ships were deployed in the region and hosted 13.1 million passengers, generating revenue of USD 20.7 billion, the latter standing at 61.2% of the global market

sales. A total of 114 cruise ships deployed in Europe hosted in 2014 6.4 million passengers with the estimated revenue standing at 10.1 billion dollars, or 29.9% of the global revenues. The 26 cruise ships that provided cruises in Asia/Pacific recorded 1.9 million passengers, generating estimated revenue of USD 3 billion, or 8.9% of the global revenues produced by cruising<sup>8</sup>.

**Table 1.1: Cruise Industry Overview, 2014**

	Cruise fleet	Passengers (in million)	Estimated Sales Revenues (in billion US dollars)	Global Market share (%)
<b>Worldwide</b>	296	21.4	33.8	
<b>America</b>	156	13.1	20.7	61.20%
<b>Europe</b>	114	6.4	10.1	29.90%
<b>Asia/Pacific</b>	26	1.9	3	8.90%

Source: Cruise Industry News (2015). 2014-2015 Annual Report

As in 2013, a total of 114.9 million onshore visits by passengers and crew generated USD 52.3 billion in direct cruise sector expenditures at destinations and source markets around the world.<sup>9</sup> These also include the direct expenditures of the cruise lines for goods and services in support of their cruise operation. These expenditures generated a total (direct, indirect, induced) global output of USD 117.1 billion. The production of this output required the employment of 891 000 full-time equivalent employees who earned USD 38.5 billion in income. In the USA, the total impact of cruising has grown by 26% since 2009 comparing to a rise of 14% of the GDP over the same period. In Europe, a number of economies enjoy cruise spending that exceeds one billion Euros, including the two major source markets UK & Ireland (3.2 billion) and Germany (3.1 billion), the third major source market which is Italy that including shipbuilding reaches 4.6 billion, Spain (2.3 billion), Scandinavian countries (1.5 billion), and France (1.1 billion).

### *Cruise source markets*

North America has been the major source market over time, with more than half of the total cruise passengers per year coming from this geographical region of the world (**Table 1.2**). In 2014 this equals over 12 million people, out of the total 21.7 million cruise passengers, coming from North America, which in absolute terms is the biggest number ever. The global share of the North American market has been stabilised in recent years at around 55% as expansion in Europe has slowed down comparing to the earlier period.

Beyond North America demand for cruising is mostly expressed in Europe. According to the 2013 data, 6.4 million Europeans decided to cruise, with almost one out of four living in UK and Ireland. A total of 3.2 million of passengers came from the rest of the world. These other markets have demonstrated a stronger growth in recent years. Australasia and Asia (excluding Japan) have been the most dynamic source markets of all. Even though these higher percentages are to a certain extent the result of the small penetration levels of cruising in the particular markets in past years, it is also indicative of the advancement of stakeholders' strategies aiming to expand cruising in the particular areas. Japan and Europe (excluding UK & Ireland) have also been regions that experienced a double-digit growth since 2010. This is despite the fact that the very same years continental Europe experienced conditions of a turbulent economic environment and the southern part of it austerity measures. Latin America is the only source market that experienced a decline since 2010.

**Table 1.2: Global Cruise source markets 2010-2013 (thousands)**

	2010	2011	2012	2013	Var 13/12	Var 13/10
<b>North America</b>	11 111	11 582	11 996	12 051	0.5%	8.5%
<b>UK &amp; Ireland</b>	1 622	1 700	1 701	1 726	1.5%	6.4%
<b>Europe (excluding UK &amp; Ireland)</b>	3 945	4 368	4 438	4 631	4.3%	17.4%
<b>Asia (excluding Japan)*</b>	915	855	1 124	1 260	12.1%	37.7%
<b>Japan*</b>	188	160	217	240	10.6%	27.7%
<b>Australasia</b>	451	632	699	839	20.0%	86.0%
<b>Latin America and others*</b>	1 030	1 150	1 100	953	-13.4%	-7.5%
<b>TOTAL</b>	<b>19 262</b>	<b>20 447</b>	<b>21 275</b>	<b>21 700</b>	<b>2.0%</b>	<b>12.7%</b>
<b>Year-on-year growth (%)</b>	<b>8.2%</b>	<b>6.2%</b>	<b>4.0%</b>	<b>2.0%</b>		

\* Estimates

**Notes:** *North America totals* are based on CLIA figures (which include river passengers) but adjusted for passengers travelling with non-CLIA brands | *Other totals* include only ocean passengers.

Source: Peisley, T. (2014).

The ten-year growth of this demand (2004-2014) provides evidence of two facts. First, that the cruise industry has offered a product for which more and more people are interested in experiencing. The total of cruise passengers per year increased by 10 million within this period. Second, there is a trend towards a globalised cruise industry. Demand in North American experienced a 43.6% growth. Europe was the drive for cruising though; the total of passengers increased by 136.2% as further interest to cruise in the region provided the incentive to cruise lines to build more itineraries throughout the continent, and foremost in the Mediterranean sea. In terms of percentages though, it was the total of the regions located in the rest of the world that were the most dynamic ones over the last decade. Demand for cruise in the "rest of the world" grew by 186.1%, yet the aggregate of cruise passengers in these regions remains small and stands today at half of the European market stand<sup>10</sup>.

Despite the remarkable growth of the last decade, these numbers correspond to notably low levels of penetration in respective source countries (**Table 1.3**). USA which is the source market of 51.5% of global passengers, but this corresponds to only 3.5% penetration to its 319 million population. In UK & Ireland and Germany, the two biggest European markets, penetration levels stand at 2.8% and 2.1% of the respective populations. With 2014 data subject to confirmation, it has been reported that Germany grew by 5% to overtake the UK to become the first European source market with 1.77 million passengers in 2014, mainly due to capacity increases from German cruise lines AIDA Cruises and TUI Cruises. In aggregate, less than 3% of the European population has taken a cruise. In Asia the number is even lower, at below 1%. In strong emerging economies, such as South America or Africa, the number of people cruising is negligible. Looking further into the list, it is noted that all the other major source countries contribute with less than one million passengers per year, with the level of penetration being lower than those of the three major markets. The only exception is Australia where market penetration is comparatively higher, yet standing at 3.4% only. These low levels of penetration allow thinking of further growth potential.

**Table 1.3: Cruise penetration in global markets 2013**

Market	Pax (in thousands)	Share of global pax - %	5- year growth - %	Market penetration - %	Population (in million)
USA	11,016	51.5	15	3.5	319
UK & Ireland	1,726	8.1	17	2.8	61
Germany	1,687	7.9	86	2.1	82
Italy	869	4.1	28	1.5	58
Australia	784	3.6	137	3.4	23
Canada	734	3.4	1	2.1	22
Brazil	732	3.4	85	0.4	183
France	522	2.4	69	0.8	62
Spain	475	2.2	-4	1.2	40
Scandinavia & Finland	289	1.4	135	1.5	19

Note: USA and Canada totals are for CLIA member only lines, which account for 97.5% of those markets' passengers. They are also the only markets where river cruise passengers are included in the totals shown here.

Sources: Seatrade & CLIA Global.

## 1.2 Cruise industry organisation

### *Cruise lines: Companies and Brands*

The expansion of cruise has taken place based on a highly concentrated organisational structure. Today 52 brands operate around the globe with few cruise lines controlling the major part of the industry (**Table 1.4**). The founders of modern cruise industry, Carnival Corporation (founded in 1972), Royal Caribbean Cruise Ltd (RCCL) (founded in 1968), and Norwegian Cruise Lines (founded in 1966), are the three major groups of today.

In combination the major two corporations, Carnival and RCCL controlled in 2014 a total of 143 vessels, 16 different brands and shared the accommodation of 72.5% of worldwide cruise passengers. Carnival is the largest group in all measurements, with 10 different brands operating 102 vessels and hosted 48.1% of the cruise passengers in 2014. The six brands associated with RCCL hosted a 24.1% share of worldwide passengers on board 41 cruise ships. Two other companies have a substantial global share, Norwegian Cruise Line Holdings (NCLH) (10.4% of global passengers) and MSC (5.2%), and three more companies (Disney, Hurtigruten, Thomson) carried more than 1% of the cruise passengers in 2014. 29 smaller brands with lesser shares complete the list of the companies offering cruises around the globe.

The model of development of the top two corporations involves an extensive present consolidation of different brands aiming to cover a variety of market segments. Beyond different and potentially more effective corporate entities, these policies allow for differentiated services to be offered and the marketing of each brand as a unique of its kind. Some cruise lines have specialties; for example, Saga Cruises only allows passengers over 50 years old aboard their ships, Windstar Cruises only operate tall ship and Regent Seven Seas operates medium-sized vessels designed such that 90% of their suites are balconies. Several specialty lines offer "expedition cruising" or only operate small ships, visiting certain destinations such as the Arctic and Antarctica.

Table 1.4: Cruise Companies and Brands in operation (as in 2014)

Parent	Brand name	Sector	% share of worldwide passengers
<b>Carnival Corporation</b> <b>Ships: 2014: 102   2015: 107</b>	AIDA	Contemporary	3.7%
	Carnival Cruise Lines	Contemporary	21.3%
	Costa Cruises	Contemporary	7.4%
	Cunard Line	Premium	0.9%
	Holland America Line	Premium	3.0%
	Princess Cruises	Premium	7.9%
	Iberocruceros*	Contemporary	0.8%
	P&O Cruises	Premium	1.7%
	P&O Cruises Australia	Budget/Contemporary	1.2%
	Seabourn Cruises	Luxury	0.2%
	<b>Total</b>		<b>48.1%</b>
<b>Royal Caribbean Cruises</b> <b>Ships: 2014: 41   2015: 48</b>	Azamara Club Cruises	Premium Plus	0.2%
	Celebrity Cruises	Premium	4.2%
	Croisières de France	Budget	0.5%
	Pullmantur	Budget	1.6%
	Royal Caribbean International	Contemporary	16.7%
	TUI Cruises	Contemporary/ Premium	1.3%
	<b>Total</b>		<b>24.4%</b>
<b>Norwegian Cruise Line</b> <b>Ships: 2014: 22   2015: 24</b>	Norwegian	Contemporary	9.5%
	Oceania Cruises	Premium	0.6%
	Regent Seven Seas	Luxury	0.3%
	<b>Total</b>		<b>10.4%</b>
<b>MSC</b> <b>Ships: 2014: 12   2015: 14</b>	MSC Cruises	Contemporary	<b>5.2%</b>
<b>TOTAL OF MAJOR-4</b> <b>Ships: 2014: 187   2015: 193</b>			<b>88.1%</b>
<b>All other</b> <b>Ships: 2014: 119   2015: 110</b>	Disney		2.8
	Hurtigruten		1.4
	Thomson		1.3
	(29 brands; each hosting less than 1% of worldwide passengers)		6.4

\* Costa Cruises integrated Iberocruceros at the end of 2014

Sources: Cruise Market Watch 2015; Peisley, 2014; CLIA 2014; Cruise Line websites.

Of the 52 cruise line brands operating around the globe Carnival Corporation is associated with 10 brands. Four of them offer Premium cruises (Cunard, Holland America Line, Princess Cruises, P&O Cruises) four of them Contemporary cruises (AIDA, Costa Cruises, Carnival Cruise Lines, and Iberocruceros, which was integrated in Costa Cruises at the end of 2014), one of them Luxury (Seabourn) and one budget/contemporary (P&O Cruises Australia). RCCL operates 6 different brands; a Premium Plus (Azamara), a Premium (Celebrity Cruises), a Contemporary/Premium (TUI Cruises, which is a German-based joint venture with TUI AG) and Budget (Pullmantur, Croisières de France). NCL has also moved towards this direction at the end of 2014 through the acquisitions of a Premium (Oceania) and a Luxury (Regent Seven Seas) brand, in a combination that further the consolidation of the cruise industry.

All three major parent companies are listed corporations. The major two have between them many years of strong profitability, though profits of recent years standing at lower levels comparing to

those of a decade earlier. NCL has enjoyed years of lower profitability, yet following restructuring it has achieved highest operating and returns on capital margins. MSC Cruises stands as the one brand that differs, as is part of a family owned shipping group that is among the major global container shipping lines. Operating mostly in the Mediterranean Sea in the past, the company has expanded its deployment patterns to include other regions as well. Notably, six brands dominate, Carnival, Princess, Costa, Royal Caribbean, Norwegian and MSC, with the financial well-being of the respective corporations depending on the performance of these brands. The magnitude and the evolution of the direct revenues of the major three corporations are detailed in **Table 1.5**.

**Table 1.5: Largest three cruise companies - Revenue & Net income 2006-2014 (in million USD)**

Year	Carnival Corporation & plc		Royal Caribbean Cruises Ltd		Norwegian Cruise Line Holdings Ltd		All three	
	Revenue	Net Income	Revenue	Net Income	Revenue	Net Income	Revenue	Net Income
<b>2006</b>	11 839	2 279	5 229	634	2 000	-131	19 068	2 782
<b>2010</b>	14 469	1 978	6 752	516	2 000	23	23 221	2 517
<b>2011</b>	15 793	1 912	7 537	607	2 200	127	25 530	2 646
<b>2012</b>	15 832	1 298	7 688	18	2 200	173	25 720	1 489
<b>2013</b>	15 456	1 078	7 959	474	2 570	101	25 985	1 653
<b>2014</b>	15 884	1 245	8 073	764	2 336	368*	26 293	2 009

\*January-September 2014

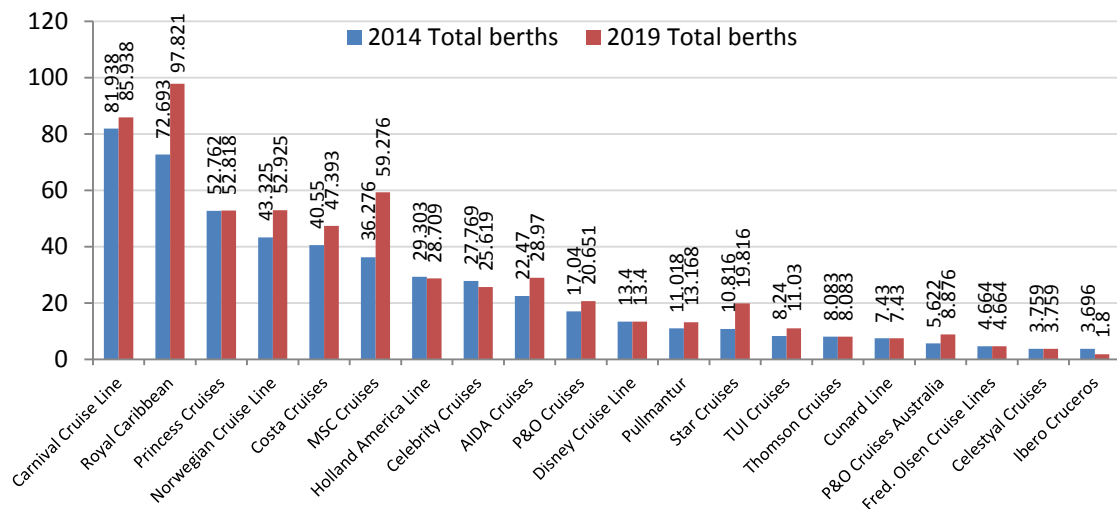
Source: Cruise Business Review (2015).

All cruise lines continue expanding with the battle for market shares linked with new build orders. Based on the vessels that are expected to reach the market until 2019, the Carnival Group will reach 107 vessels and the RCCL group 48 vessels. RCCL has already confirmed that it has ordered two vessels of the Quantum Class accommodating 4,905 passengers, to reach the market in 2016 and 2019 respectively and one of the Oasis class, of 6,294 passengers to be delivered in 2018. Projections suggest that the growth in terms of berths for Carnival over the next five years will be 8.3%, (from 263,505 to 285,324); that of RCCL standing at 26.8% (reaching 150,174 from 118,441 in 2014) and that of NCL at 22.2% to reach 52,925 berths in 1992. Of the top-4 the most aggressive one in expansion is MSC, which following a 65.4% capacity expansion is on course to become the third largest.

Beyond considerations of the type of product and amenities that cruise lines want to offer, legislative trigger developments as regards the types of vessels ordered. In the aftermath of the decision of Italian authorities to limit the size of vessels visiting the marquee port of Venice, the presence of "Venice class", i.e. cruise ships that are small enough to avoid regulatory limitations imposed in big vessels and sail into the Italian city, emerged.

As a result, all top 10 brands in terms of capacity expected to retain their inclusion in the top-10 list with only some minor changes and swapping positions, including the one between the top two (**Figure 1.3**). These 10 brands (Carnival Cruise Lines; Royal Caribbean International; Princess Cruises; Norwegian Cruise Line; Costa Cruises; MSC Cruises; Holland America Line; Celebrity Cruises; AIDA Cruises; P&O Cruises) shared a combined capacity of 500,854 berths in 2014 and are expected to reach 592,146 by 2019.



**Figure 1.3: Top 20 cruise brands capacity in 2014 and 2019**

Source: Peisley T. (2014).

The different brands follow a variance of strategies in order to achieve increased market shares. Carnival is rebuilding through a strategy of restructuring deployment and itineraries, RCCL does so based on board revenues and investment in mega-ships that allow moving to pay-for entertainments. Aiming to fulfill these plans, a transfer of ships between brands is not uncommon. During 2015 Celebrity Century will transfer a vessel (Mein Schiff 3) to the TUI brand, Holland America will transfer two ships to P&O Australia (Ryndam and Statendam), whereas Seabourn will transfer two to Windstar (Legend and Seabourn Spirit).

Mergers and acquisitions are also rather common. Norwegian Cruise Lines purchased in 2014 from Prestige Cruise Holdings two brands, Oceania Cruises and Regent Seven Seas Cruises. In the same year Carnival Corporation decided to absorb IberoCruceiros into the Costa Brand. It was a most significant consolidation, in 2003, the takeover of one of the four major players (P&O Princess Cruises) by Carnival Corporation, which provided the foundations of today's structures of cruise shipping. With market concentration, consolidation, and management restructuring, being parts of modern cruise companies, the concentration in the international cruise business might extend further from year to year, and further consolidation take place.

### ***Changing structures (1990s -2010s)***

Two decades ago the global fleet of cruise ships had one third of the present passenger capacity, whereas passengers per year were less than 20% of those that cruise today. The total of cruisers in 1990 was just 4.2 million passengers. In 1993 just 162 000 berths capacity and itineraries offered attracted approximately 5 million cruise passengers. Yet, the global cruise fleet was standing at 294 vessels, in 2014 only two cruise vessels were added to the fleet.

With nine different groups having considerable stakes, the structures of the cruise lines were also different. The biggest three groups of today were already present and even standing as the biggest of all, yet their organisations were different. The Carnival Group operated five different brands, a total of 20 vessels of 22 000 berths. Royal Caribbean was a single brand operating nine vessels of 14,326



berths. NCL was also presented, standing fourth, but was operating as part of the three-brand group Kloster that was later restructured to provide the foundations of the present corporation.

While the biggest three remain part of modern cruising, the other groups have been either acquired or seized to exist. The P&O group, which was operating 12 vessels and standing marginally third in terms of capacity, was to be overtaken in 2000s by Carnival. This was the major overtaking of all and contributed to the present concentration of the industry. Similar were the fortunes, and thus the contribution, of the then fifth major group, Costa/Paquet and its three brands (10 vessels, 8,376 berths) and then sixth major group, Cunard/EffJohn and its three brands (11 vessels; 7 831 berths).

The three other corporations in the list were Greek-owned, Greek-flagged companies. Epirotiki/Ulysses, Lelakis, and Chandris that were operating four, three, and two different brands respectively. Whilst their role in introducing modern cruise to broader audience, and professionalise the operations of cruise lines corporations have been instrumental, all of them have disappeared since then, either due to disinvestment decisions or else. Whereas the Greek market remains a key one, in terms of size and image of cruising, Greek flagged cruising has cease to exist since 2011 as the decision of the Cypriot-interests Louis Cruises (renamed Celestyal in 2014) to shift its vessels to a third flag, there are no more vessels operating under the Greek flag.

### ***Market segmentation***

The growth of cruising has led to market segmentation. Different types of vessels, associated with different amenities offered on board and ashore, and itineraries, define types of cruises offered, in turn having as target different groups of potential cruisers. In an attempt to broaden the group of potential customers, cruise lines, or specific brands of the bigger corporations, provide and market its presence in one, in some case more, of the major segments, namely contemporary, premium and luxury cruises, or the fourth distinctive one, that of speciality cruises (**Table 1.6**). In North America, the major cruise region of the world, contemporary cruises share of cruise passenger nights is 69.4% that of premium cruises 26.9% and those of luxury and speciality cruises 1.9% and 0.8% respectively<sup>11</sup>.

Contemporary cruises are popular amenity-packed cruises for people looking for lots of activities and a great value. These mainstream cruises rival land based vacation by offering a comprehensive and amenity filled vacation, inclusive of accommodations, meals, and entertainment, in a casual environment, with newer (or extensively renovated) ships offer modern design and comforts, and many more activities. Premium cruises are more upscale cruises also offering many amenities, with increased focus on refined service and more space. Priced inclusive of accommodations, meals, and entertainment, premium cruising's value still exceeds or rivals the best packages offered by upscale hotels and resorts. Luxury cruises are defined by the highest levels of quality and personalized service offered on luxury cruise ships and ashore to exotic ports. Expensive when compared to the rest of the industry, luxury lines deliver value by offering more inclusive pricing than other cruise lines and opportunities to travel to exotic destinations. A fourth market segment is speciality cruises. These focus on a destination niche or a special style of cruising including expedition-style cruises, sailing ships and a growing number of river cruises. They visit some of the world's most remote and unspoiled places to offer a unique experience that guests find educational and adventurous.

**Table 1.6: General Characteristics of different cruise market segments**

	Contemporary Cruise Lines	Premium Cruise Lines	Luxury Cruise Lines	Specialty Cruise Lines
<b>Keyword</b>	Quantity	Quality	Exclusivity	Adventure
<b>Ships</b>	Large ships	Medium-sized Ships	Small Ships	Very Small ships
<b>Typical Pax capacity</b>	2 000 – 5 600	1 500 – 2 500	100-800	100-300
<b>Cabins</b>	Small cabins	Large cabins	Huge cabins or all suites	Mixed cabin accommodations
<b>Food</b>	Good food	Fine dining	Gourmet cuisine	Mixed dining options
<b>Orientation</b>	Family friendly	Family friendly, but more adult-oriented	Not family-friendly	Not suitable for most families
<b>Amenities</b>	Fitness/Sports	Spa-oriented	Spa-oriented	Few fitness/spa options
<b>Length of itineraries</b>	3-7+ night	7-14 night itineraries	10+ night	3-20 night
<b>Quality of service</b>	3-4 star service	4-5 star service	5-6 star service	3-5 star service
<b>Price point</b>	\$-\$\$\$	\$\$-\$\$\$	\$\$\$\$\$	\$\$\$\$-\$\$\$\$\$
<b>Cruise Lines</b>	Carnival Cruise Line; Costa Cruise Line; Disney Cruise Line; MSC; Norwegian Cruise Line; Royal Caribbean International	Azamara Cruise Line; Celebrity Cruises; Holland America; Oceania Cruises; Princess Cruises	Crystal Cruises Cunard Line Regent Seven Seas Cruises Seabourn Sea Dream Silversea Cruises	Cruise West; Delta Queen Steamboat; Discovery World Cruises; Hurtigruten; Peter Deilmann; Star Clippers; Viking River Cruises Windstar Cruises

Source: Mintel Academic (2013).

For at least contemporary and premium cruises, technology, and smart processes are used, for example for check-in, connections, etc. A key innovation is the “*online check-in*”, completed at home and verified via the cruise line’s system, and self-service machines whereby guests receive room key/RFID wristbands and proceed to the ship. Along with advanced applications, such as holograms throughout port directing guests to ship, and applications for guests, referring boarding time, on-board entertainment, luggage tracking, tour transfers, last minute shore excursions offers and not least ground handling support systems, improve the overall experience generating conditions for market expansion.

### **Market concentration**

The cruise industry is highly concentrated as the number of operating branches and involved corporation is limited. Focusing on the different cruise regions, the level of concentration differs. The North American market, the biggest of all is more concentrated than others, with the big three corporations are sharing 90.3% and 4 brands control 76.5% of the market (**Table 1.7**). In the Mediterranean, the second most popular region is far less concentrated, as 46 different brands operate the four major brands (Costa, MSC, Norwegian, Royal Caribbean) which operate 51.3% of the existing capacity.

The size of capital investment needed to enter the market, when most incumbent, publicly listed cooperation’s have already access to substantial capital, and the bundling of services and activities that is essential and has been achieved by those brands already operating in the young market of modern cruise, make the variation of the present market structures rather unlikely in the forthcoming future. However, while the market is concentrated in terms of ownership, the variation of the product is such

that each vessel stands as a different value proposition to the potential customers. The latter has today more options available than ever, in terms of vessels, itineraries, pricing, to select the cruise that fits best to their preferences.

**Table 1.7: Share of North American market (passengers nights per cruise segment)**

Market Segment	Brand	Share
<b>Contemporary (69.4%)</b>	Carnival Cruise Lines	32.4%
	Royal Caribbean International	20.8%
	Norwegian Cruise Line	11.8%
	Disney Cruise Line	4.0%
	Costa Cruises	0.4%
<b>Premium (28.1%)</b>	Princess Cruises	11.5%
	Holland America Line	8.6%
	Celebrity Cruises	6.8%
	MSC Cruises	0.7%
	Oceania Cruises	0.5%
<b>Luxury (1.9)</b>	Cunard Line	1.1%
	Crystal Cruises	0.4%
	Regent Seven Seas Cruises	0.4%
<b>(Speciality/expedition) (0.8%)</b>	Other	0.8%

Source: Mintel Academic (2013).

### *Emerging players*

With growing prospects and expanding geographical presence, new players are interested in joining existing operators. On the one hand, these are outsiders, not being part of the cruise industry before. Virgin Group has already announced its intentions to enter the market and constructs two cruise ships. Endorsing the vision to shake up the industry and its dominated by three big companies, Virgin Cruises aims to take advantage of its product delivered in related industries (i.e. entertainment) so as to offer a different value proposition to cruising customers.

On the other hand, experience in the industry also brings life to new companies, either aiming to take advantage of expertise or because of the scope to offer a distinctive product. In early 2015, executives having had experience at Celebration, formed Bahamas Paradise Cruise Line, operating a vessel previously owned by Celebration. Viking River Cruises, the leading river cruise company, sailed its first ocean ship in 2015, and expands its ocean fleet to three by 2017 and 10 by 2020. The aim is to ultimately deploy vessels in most regions and offer world cruise. The inaugural strategy is based on product variation, i.e. competing with mega-size vessels by providing cruises on smaller (less than 1 000 passengers) vessels that spend more time in destinations.

Within the coming decade Chinese and Asian cruise brands are also expected to emerge, either by building or acquiring cruise vessels, which given the existing cultural differences are expected to add to the variety of cruising as well. Developments in another region, Cuba, might also act as drivers for some existing lines but also new ones. Improved relations between US (the major source market for cruising) with Cuba (a major travel destination) led in 2015 to the licensing of US passenger lines to conduct ferry services between the two countries, whereas conditional approval to US citizens to visit Cuba is also under discussion.

River cruise seems to enjoy a spring as well. The major operator alone, Viking Rivers, has recently ordered more than 20 vessels itself in a year. Other operators have also invested in new vessels, with European rivers and US river cruises being the ones that develop faster than other markets.

### 1.3 The geography of cruise shipping

#### *Deployment shares per region*

The deployment shares of each region are a combination of the existing demand for cruises, and the willingness of cruise lines to develop new markets. Looking at the capacity of the cruise vessels deployed in each region (**Table 1.8**), Caribbean stands as the dominant, with 37.3% of the global capacity. The Mediterranean Sea is the second biggest region of all, with a share of 19.9% of the globally deployed capacity. The non-Mediterranean European market reaches 11.1% standing as the third major region of all. In aggregate, in these three regions are deployed cruise vessels corresponding to 68.3% of the global passenger capacity.

**Table 1.8: Global Deployment Shares Deployment of Capacity (shares; 2004-2014)**

Region	2004	2008	2014
<b>Caribbean</b>	40.4%	37.2%	37.3%
<b>Alaska</b>	7.7%	7.6%	4.5%
<b>South America</b>	1.4%	2.9%	3.3%
<b>Europe (No Med)</b>	9.8%	8.3%	11.1%
<b>Mediterranean</b>	12.6%	17.6%	19.9%
<b>Asia</b>	0.5%	1.2%	4.4%
<b>Australasia</b>	0.9%	2.2%	5.9%
<b>Other markets</b>	26.7%	23.0%	13.6%

Source: CLIA (2014).

Exploring the longer trends and the changes in shares that happened over the last decade, it is evident that the Caribbean has lost ground as the Mediterranean was the success of the decade, however in most recent times growth in the Mediterranean has slowed down as Asia and Australasia are gaining interest. The Mediterranean has seen its share of the global deployment increasing from 12.6% in 2004 to 19.9% transforming it into the most dynamic cruise region of the world the last decade. Europe beyond the Med has realised its share rising from 9.8% in 2004 to 11.1%. South America is also among the regions that gained ground the last decade as 3.3% of global deployment took place there in 2014 compared to just 1.4% in 2004. In North America, both Alaska and the Caribbean have lowering shares. In the former case the share lowered to 4.5% from 7.7% a decade ago. The share of Caribbean stands at 37.3% of the global - compared to 40.4% a decade ago.

The most dynamic region of the recent years is Asia. The first half of the decade under examination its share has grown from 0.5% to 1.2% in 2008. The deployment of cruise vessels in the region has accelerated in a remarkable way over the last five years; in 2014 it grew by almost four times compared to 2008. Even though this is still a tiny 4.4% of global deployment, the region deserves further attention and is thus examined in forthcoming sections.

Deployed vessels are involved in different types of itineraries, so as to allow maximum capacity utilisation in combination with the maximisation of earnings per passengers and lowering of expenses (mostly via lower fuel consumption). The factors affecting the deployment patterns include the geographical distribution of passenger source markets, the need to match brands and ships to source market demographics; the seasonality of a region; the links with airlift, and landside transportation; the opportunity to balance marquee destinations with lesser known gems, or that of developing new routes and generating itineraries for new markets, the potential shore executions revenues comparing to on-board spending; fuel sourcing, availability and cost consideration. All these are examined in parallel with the time, speed and distance formula in order to decide where and how to deploy cruise ships.

One might identify three types of itineraries structured by cruise lines<sup>12</sup>: (a) *perennial*, responding to a region that is served throughout the year due to the resilient demand (with high/low periods) and stable weather conditions; Caribbean end to a lesser extend the Mediterranean are such markets (b) seasonal, to serve periodical market potential in periods with good weather conditions; with the Baltic, Norway, Alaska and New England standing as typical examples and (c) repositioning, between perennial or seasonal markets; a practice evident between the Caribbean and Mediterranean, and Alaska and Hawaii, though following the globalisation of the market in recent times has expanded to additional markets (i.e. Mediterranean and the Indian Ocean). New ships are deployed in more than one region to incite additional demand by the new amenities they offer. The new Quantum class of RCCL, among the advanced cruise ships, is splitting its deployment and respective sailings between the Caribbean (late 2014), Mediterranean (early 2015), and Asia (mid 2015).

The typical number of itineraries is 4-7 days, though this is subject to regional variation. Looking at the North American example, 41.8% of the cruises last 7 days, whereas 22% last 4 or 5 days, and only 9.4% than 10 days or more; whereas Bahamas and Western Caribbean 3-5 days are dominant, in South Pacific one might identify cruises lasting 14 days or more. According to CLIA data, the average cruise length has increased from 6.4 days in the 1990s to 6.9 days in the 2000s and 7.2 in 2013<sup>13</sup>.

Modern deployment and existing demand translate into the deployment of 48.1 million bed days in the Caribbean, 15 million in other North America regions, including Alaska, It also corresponds to 49.6 million bed days in Europe, of which 35.7 are offered in the Mediterranean Sea, and 13.9 million in Northern Europe (**Table 1.9**). Europe has benefited from a 172.5% growth over the last decade, compared to 27.4% in North America. Yet, it is the comparatively recent rise of the other regions of the world – with Asia being instrumental that has secured the most significant growth of all, almost tripled within the period 1993-2013. In North America alone, the overall industry load factor stands at over 90%, whereas the bed-days utilisation has increased from 80-85% in the 1990s to over 92% in the most recent years.

**Table 1.9: Global Deployment of Capacity (in millions of bed days; 2003-2013)**

Region	2003	2008	2009	2010	2011	2012	2013	10-Year Growth
<b>North America</b>	49.5	56.9	56.8	62.7	62.1	64	63.1	27.4%
<b>Caribbean</b>	35.1	36.9	39.1	46.2	45.5	48	48.1	37.0%
<b>Other North America</b>	14.4	20	17.7	16.5	16.6	16	15	-4.4%
<b>Europe</b>	18.2	35.8	39.6	41.4	49.5	48.7	49.6	172.5%
<b>Northern Europe</b>	4.5	8	10.2	9.7	11.4	13.2	13.9	209.0%
<b>Mediterranean</b>	13.7	27.8	29.4	31.7	38.1	35.5	35.7	160.6%
<b>North America &amp; Europe</b>	67.7	92.7	96.4	104.1	111.6	112.7	112.7	66.5%
<b>Rest of the World</b>	5.3	11.3	13.2	13.8	15.1	20.7	21.8	296.4%
<b>Total</b>	73	104	109.6	117.9	126.7	133.4	134.5	84.2%

Source: CLIA and G.P. Wild (2014).

The annual occupancy percentage even exceeded 100% in 2009 showing an industry where demand continues to outstrip supply, even in the harshest economic environments<sup>14</sup>. Occupancy figures must however be treated with caution as what is considered normal capacity on a cruise ship is based on two passengers per stateroom (100% occupancy). Since many staterooms can accommodate three to four passengers, occupancy rates are generally well above 100%. This underlines that the industry has been so far fundamentally supply based; the ships are built and the customers are found to fill them through various marketing and discounting strategies.

Each passenger embarks on a cruise visiting more than one cruise port. As a result, the total number of cruise passenger movements is remarkably higher than that of single passengers. Driven by the industry tendency, a 4 000 lower-berth ship on annualised 50 weeks' deployment in a standard seven-day itinerary of six ports (one homeport, five transit ports) of the West Mediterranean itinerary, and excluding any effect of inter-porting, generates 1.4 million passenger movements per annum.

In 2013, Europe alone hosted 31.1 million passenger movements (**Table 1.10**). Italy is the most visited country, with its cruise ports hosting almost 7 million, followed by Spain, accommodating 5.2 million movements and Greece, with 4.6 million passenger movements. Two other Mediterranean countries – France (2.4 million passenger movements) and Portugal (1.1 million) – are also on the list of European countries hosting more than one million passenger movements within a year. The only non-Mediterranean country being part of this group is Norway, which hosts 3 million passengers per year.

**Table 1.10: Cruise passenger movements in European countries 2010/2013**

Rank	Country	Pax movements (2010 ; in 000)	% share	Pax movements (2013;in 000)	% share	Embarked pax (2013; in 000)	% share
1	Italy	5 403	21.4%	6 970	22.4%	2 137	35.2%
2	Spain	4 911	19.5%	5 236	16.8%	1 298	21.4%
3	Greece	4 473	17.8%	4 601	14.8%	212	3.5%
4	Norway	1 793	7.1%	3 023	9.7%	40	0.7%
5	France	2 010	8.0%	2 410	7.7%	232	3.8%
6	Portugal	925	3.7%	1 138	3.6%	27	0.4%
7	UK	541	2.1%	866	2.8%	1 038	17.1%
8	Sweden	517	2.1%	529	1.7%	48	0.8%
9	Estonia	391	1.6%	509	1.6%		
10	Denmark	529	2.1%	483	1.5%	224	3.7%
11	Benelux	193	0.8%	472	1.5%	96	1.6%
12	Finland	315	1.3%	429	1.4%		
13	Malta	462	1.8%	378	1.2%	51	0.8%
14	Germany	210	0.8%	367	1.2%	565	9.3%
15	Gibraltar	319	1.3%	278	0.9%		
16	Cyprus	271	1.1%	214	0.7%	50	0.8%
17	Ireland	177	0.7%	209	0.7%		
18	Iceland	147	0.6%	204	0.7%		
19	Poland	140	0.6%	95	0.3%		
<b>Other EU (+3)</b>		161	0.8%	244	0.8%	34	0.6%
<b>EU+3</b>		23 888	91.9%	28 655	94.8%	6 052	99.7%
<b>Other Europe</b>		1 312	8.1%	2 530	5.2%	18	0.3%
<b>Total</b>		<b>25 200</b>	<b>100.0%</b>	<b>31 185</b>		<b>6 070</b>	<b>100.0%</b>

Note: Passengers make multiple port calls in single countries

Source: CLIA Europe (2014).

The Mediterranean and its adjoining seas have been a driving force for the growth of the industry over the last two decades. In 2014, 47 different brands and 138 vessels with a capacity of 3.8 million passengers operated in the region<sup>15</sup> and according to MedCruise, the association representing cruise ports in the Mediterranean and its adjoining seas, its 70 member ports alone hosted 25.8 million passenger movements, with this standing at 80% of the region. These ports hosted over 25 million each year of the 2010s when in the turn of the century they were hosting 8.6 million movements<sup>16</sup>. The growth of numbers is the outcome of the rising scale of cruise ships rather than other factors. The most significant increase in the Mediterranean region took place without increasing at the same ratio. The total cruise calls in 2000 were 10 146, they reached the record 15 451 in 2010, before declined to 13 716 in 2014.

In recent years growth has stagnated, with a deployment capacity decline took place in 2013 (7%) and in 2014 (5%). This resulted from the fact that cruise lines put to the growth of the Asian market, and due to regulatory changes that obliged cruise lines to limit the presence of the biggest vessels in Venice – along with the comparatively slow growth of cruise activities around the globe the same years.

### *Growing markets*

Cruise lines restructure their deployment strategies, trying to better understand what fits best in each case and which strategies respond to the global presence of cruising. Differences among markets and regions exist, the most obvious being the variance of profitability. The emerging multi-region industry development is directly linked with a changing geography. Whereas the Mediterranean has experienced the major growth of all in the last decade, standing as the "star" region of the world, Asia is increasingly appearing in the strategies of cruise lines, both as a deployment region and a source market.

The Mediterranean Sea is today the second biggest cruising region, following Caribbean, with the two regions combining 67% of the global capacity. Increased demand and effective work by regional stakeholders (including ports, destinations and others) satisfactory served this growth. Yet given cruise lines search for new dynamic markets further efforts are essential for this growth to sustain. On the positive side, CLIA member cruise lines are scheduled to introduce 22 new cruise ships in the Mediterranean Sea in 2015<sup>17</sup>, while concepts suitable for the European market (i.e. drive and cruise) are applied. Being at the crossroads of three continents, the region offers a combination of numerous destinations, richness in history, cultural diversity, while weather conditions allow for extended cruise seasons. Given the levels of yields that the region has offered, the presence of several cruise ports that offer operational alternatives, even when considering a single destination, the region is expected to sustain as a major cruise regional market.

The most dynamic region of the recent years is one of the smallest ones. The Asian cruise market has a tiny 4.4% of global deployment, but increasing capacity combined with the opening of sales offices by many cruise lines in China, Hong Kong, Korea, Singapore, and Taiwan has quickly made the Asian region rank fourth in passenger capacity deployment, tied with Australasia. Forecasts suggest that the number of Asian passengers could grow from 1.3 million in 2012 to almost four million in 2020 (**Table 1.11**). The growth is mostly based on the number of Chinese cruise passengers, which from 2012 to 2014 jumped by 79% to 697 000, making it nearly as big as all other Asian markets combined (701 000)<sup>18</sup>.

China appears to be a market of great strategic importance for the global cruise industry. Several brands aiming to advance it to the second largest cruise market in the world by 2017. RCCL has already operated a 4 180-guest, Quantum-class vessel and will deploy a second new one in 2016, aiming to introduce a cruise culture of bigger vessels and longer stays. Carnival deploys (either on four-month or year-round deployment) four ships in Shanghai in 2015, increasing its cruise capacity in China by 140% from 2013. Since mid-2000s, several major cruise companies have opened offices in the region, irrespective of whether they operate in the region or not (MSC), in order to promote the concept of cruising, market their product in a potential source market, and not lest prepare the ground for future deployment in China and Asia.



**Table 1.11: Asia cruise traffic projections to 2020 (passengers, in .000)**

Source market	Passengers 2012	Passengers 2020	Var 2020/2012 (estimate)
<b>China</b>	472	1 617	242.6%
<b>Japan</b>	217	766	253.0%
<b>Malaysia</b>	144	288	100.0%
<b>India</b>	133	242	82.0%
<b>Singapore</b>	91	181	98.9%
<b>South Korea</b>	73	219	200.0%
<b>Indonesia</b>	59	238	303.4%
<b>Hong Kong</b>	53	124	134.0%
<b>Taiwan</b>	47	163	246.8%
<b>Other</b>	52	102	96.2%
<b>Asia (all)</b>	<b>1 341</b>	<b>3 940</b>	<b>193.8%</b>

Source: Chart Management (2014).

In a nutshell, a total of 2.17 million passengers capacity will be available in 2015, as the capacity of cruises offered the Asian market itself increased by 18.3% within two years. Itinerary planners for global voyages are expected to double their ship capacity covering Asia as part of itineraries. Today, 26 cruise brands are already active in Asia. CLIA data<sup>19</sup> suggest that a total of 52 ships will be deployed in Asian waters in 2015, with nine of them being year-round in Asia. This will result a total of 1 065 separate cruises offered through 2015, with 981 being Asia-Asia Cruises (compared to 802 in 2013), and the rest 84 (comparing to 59 in 2013) being voyages that pass through Asia (World, “Circle Pacific” and repositioning itineraries). Operating days in Asian market will also continue to increase, the 4 307 days of 2013 are expected to reach 5 824 in 2015, a remarkable 35.2% increase within just two years. These vessels are mostly operating in East Asia (2,934 days) and South East Asia (2 529), with the share of South Asia being comparatively small (361 days).

The type of vessels deployed, and the length of cruises offered hint the peculiarities of the Asian cruise market. Large and mega ships offering cruises in Asia are still few (two mega and nine large in 2015). Seasonally operated mid (22) and small (14) size ships are most common. Short cruises dominate, as 43% of the offered cruises last 2-3 days and 37% more last 4-6 days. The peculiarities result by the geographical features and the cultural differences of this market comparing to the ones that cruise developed in recent times. First, the very short, or short, distances between calling ports and destinations that are available in the Caribbean, the Mediterranean, and the rest of the European market are not present. To combine destinations of interest, or broader geographical parts distances are longer and a full day, or more, at the sea might be an essential itinerary feature. In addition shorter vacations are most common, as people have limited vacation entitlements. Thus, people need to familiarise with both the idea of cruising, the idea of vacation trips lasting longer, and the cruising in other regions – 91% of Asian passengers cruise within Asia with the remaining 9% flew to cruise destinations outside the region, primarily in Europe, followed by Alaska and Caribbean

Nonetheless, given the size of the population, and the potential numbers of passengers that small numbers of penetration would result in, Asia in general and China in particular have been the centre of the attention of cruise lines who are banking on a potential million passengers market. They do so cruising with local characteristics, such as local cuisines, language services, and high-end shopping. It is also targeted by other stakeholders, including destinations and cruise ports in other regions of the world (i.e. ports in the Mediterranean and its adjoining seas) which have embarked on campaigns to generate interest of Asian for cruising in the respective regions).

Cuba stands as the unpredictable variable, as it is a potentially growing market to change the structures of cruising in the Caribbean. Cuba and the changing landscape insofar the regulations concerning the US trade embargo might also act as game changers. Cruise lines follow with interest as the rich in history and culture Cuba is of significance from a passenger-interest perspective. Cruise lines are already exploring possible itinerary options for variety of different ports in Cuba in order to add several destinations for cruises of various lengths that begin and end in Florida or at one of many island nations near Cuba. That development though is conditioned by the political developments, but also by the fact that many ports require infrastructural changes.

#### 1.4 Cruise Fleet: Renewal and Economies of scale

The growth of the industry is extensively based on cruise lines investing in modern and bigger vessels. The continuous change that is taking place is detailed in **Table 1.12**, 108 vessels were ordered in the 1990s, 127 more in the 21<sup>st</sup> century. Following the delivery of new builds over the last fifteen years the average age of the global cruise fleet stands today at 19 years, with the stable number of the global cruise fleet at a number just shy of 300, confirm the extensive renewal of the product that cruise is offering to present and potential passengers. Nonetheless, it is also evident that the pace slowed down in the first half of the 2010s, as orders and deliveries stand at lower levels compared with previous periods of similar time-span.

**Table 1.12: Cruise ship orders and deliveries (1990-2014)**

Time period	No. of ships ordered	No. of ships delivered
<b>1990-1994</b>	35	47
<b>1995-1999</b>	73	47
<b>2000-2004</b>	38	72
<b>2005-2009</b>	62	44
<b>2010-2014</b>	38	34
<b>1990-2014</b>	<b>246</b>	<b>244</b>

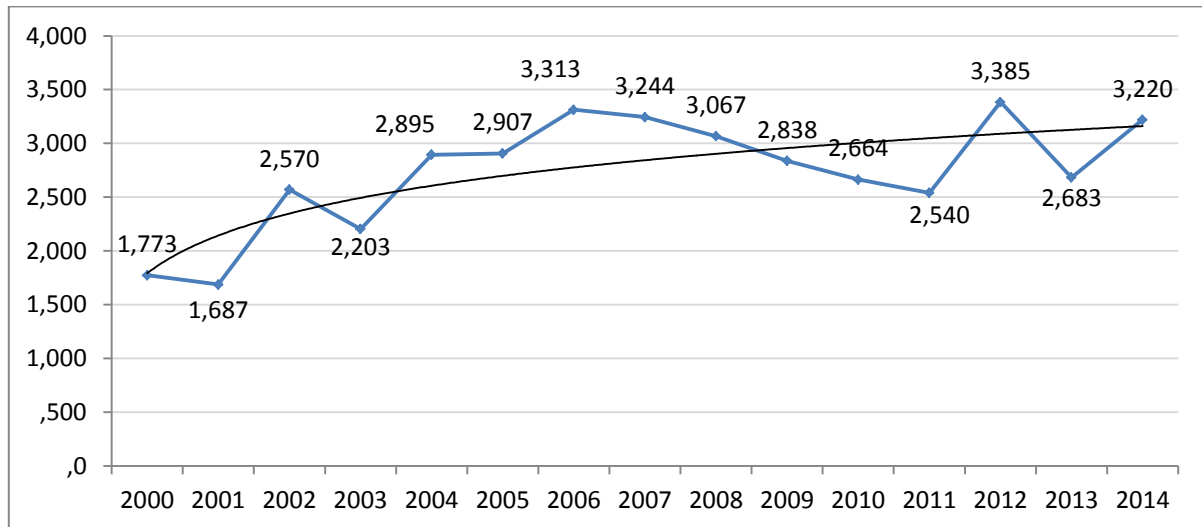
Source: Barry Rogliano Sales (BRS).

The average dimension of a current cruise ship is 200 metres long, 26 meters beam, and a passenger capacity of 3 220 passengers (**Figure 1.4**); though standard deviation is big and such measurements need to be treated with caution. These fleet specifications have no relation with the picture observed a decade earlier. In the early 2000s large cruisers with a transport capacity in excess of 2000 passengers were few and cruisers with a specification approximating 3 000 passengers were thought to be "gigantic". The average capacity of cruise fleets exceeds 2 000 passengers for the first time in 2002, and 3 000 passengers in 2006. Calculations of current orders to be delivered over the coming two years suggest a clear trend of stabilization at an average capacity that is bigger than 2 700 passengers, though this does not include potential withdraws from the market.

Carnival, the world's largest cruise company has already announced a fleet capacity increase by nearly 10% from 2014 through 2016, while it had renewed the largest fleet in the world with more than 30 new ship additions since 2007. RCCL, the second biggest cruise corporation, has led the race towards bigger cruise ships with the Oasis class vessels accommodating more than 6 000 passengers and a crew of 2 000. In late 2014, Royal Caribbean introduced the Quantum ship class, underlining the preference in extending amenities over accommodating additional passengers, since the new class built at a cost of USD 1.1 billion, carries about 4 200 passengers. The same year Costa received Costa

Diadema a 4 947 passengers vessels with different type of amenities for a cost reported to be €556 million. Allure of the Seas, owned and operated by Royal Caribbean International, is in the beginning of 2015 the biggest cruise ship in the world with a length of 360 metres and a maximum beam of 60 metres. Built in 2010, it has 2 706 staterooms with a maximum capacity of 6 296 passengers.

**Figure 1.4: Average capacity of operating cruise ships (2000-2014)**

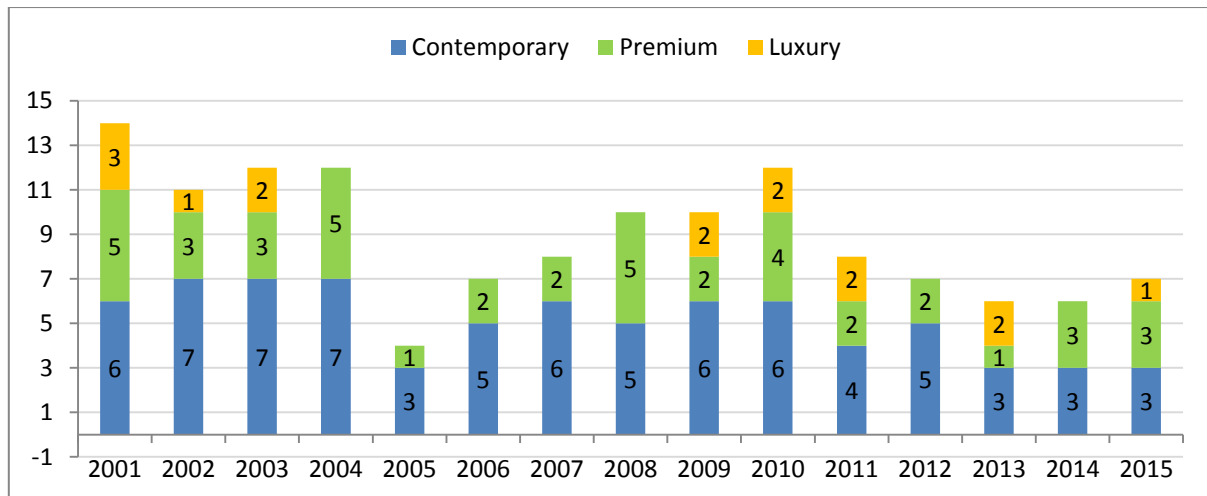


Source: Peisley T. (2014).

These innovative cruise ships enable major improvement of services. They allow, among others, easy-to-use systems that expand guest choices and simplify schedules, plus, advanced technology that speeds up processes (i.e. boarding, luggage tracking etc.) and improve experiences. The average ship of the 1980s had eight guest decks, while modern vessels of 13 or 14 guest decks provide opportunities to explore and cabins with more room and private verandas, previously a rare commodity. Subsequently, the "one-class cruising" system, inaugurated in late 1980s, where all passengers received the same quality berthing and facilities, is today almost totally adopted. Ships also changed their sailing technology by adding stabilizers, which are underwater wings to the hull reducing the motion of the ocean. Operational issues and infrastructure needs are shifting, whereas new approaches of deployment, shore excursion and itinerary development practices seeking increased economic returns via strong performance in both on board and ashore revenues.

In total 134 cruise ships that operate today are new builds that entered the market in the 2000s or later (**Figure 1.5**). The different vessels target different socioeconomic groups and preferences of passengers. More than half of them, 76 vessels offer "contemporary" cruises, 43 vessels respond to the needs of the Premium cruises sector and 15 ships target Luxury cruises.

Figure 1.5: New Ships by product sector (2001-2015)



Source: Peisley, T. (2014).

The picture will further change by 2020 as 37 more ships will reach the market (**Table 1.13**). While for most of these vessels the region to be deployed will be decided at a later stage, in the case of the 17 for which a decision has already been made the vast majority (13) will be deployed in Europe. The aim to achieve economics scale, which in the cruise industry is combined with economies of scope, is supported by the know-how of shipbuilding, will be served by the fact that 14 of the ordered vessels are bigger than 4 000 capacity, whereas the capacity of 15 more of them will be able to host more than 2 000 passengers. The details also suggest an average increase of beam by 35% to 270 meters, and an increase of length by 35%, or 70 meters, to 270 metres. Beyond additional amenities and product variation on-board, larger cruise ships tend to have lower average labor costs than smaller ships - for example, a 5 000 plus-cruise vessel has one crew member for every 2.6 passengers, while a 2 000 passenger one has one crew member for every 2.1 passengers – leading to the continuous increase of cruise fleet.

Table 1.13: Ocean cruise ships on order to 2020

Capacity (passengers)	Number of Ships	Region to be deployed						Shipbuilding company				
		Caribbean	Europe	Europe/ Caribbean	Asia	World	TBA	Fincanteri	Meyer Werft	Meyer Turku	Mitsubishi	STX France
6 000-6,400												
5 000-5,999	2						2					2
4 000-4,999	12	1	1	1			9	3	6			3
3 000-3,999	7		2		2		3	3	2		2	
2 000-2,999	8		6				2	1		5		2
1 000-1999												
500-999	7		4			2	1	7				
100-499	1					1		1				
<b>Total</b>	<b>37</b>	<b>1</b>	<b>13</b>	<b>1</b>	<b>2</b>	<b>3</b>	<b>17</b>	<b>15</b>	<b>8</b>	<b>5</b>	<b>2</b>	<b>7</b>

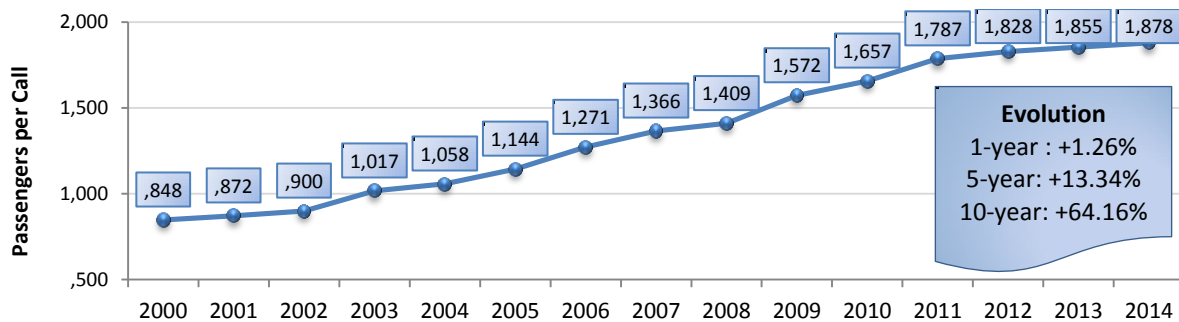
Source: Peisley, T. (2014).

Shipbuilding is taking place mostly in Europe, providing considerable input to the local economies, a picture contrasting the cargo vessels shipbuilding that is increasingly taking place in Far East Asian countries. The number of shipyards is limited, owned by five companies, with further consolidation of the latter being on the table. Fincantieri, Italy (13 vessels, 1.21 grt) and Meyer Werft, Germany (nine vessels, 1.47 million grt), were the shipyards dominating the market shares in 2014 in terms of vessels and of gross tons respectively. These are the two ones that have the biggest order group in early 2015, and are expected to strengthen further this share. Meyer Werft already owns 70% stake in Meyer Turku and is in the process of completing within 2015 the buying the Finnish Government's 30% stake in the shipyard that has currently orders for five vessels. STX France, a Korean owned shipyard is the fourth shipbuilding company involved in the construction of cruise vessels, currently having seven orders. The only non-European company is the Japanese Mitsubishi with current orders standing at 2 vessels. Even though the strategy of cruise lines to enter the China market has been reported to be accompanied by a search for suitable Chinese dry-dock and shipyard facilities, this is not expected to be a game changer for the next decade.

Latest developments (April – May 2015) suggest that the above is a picture that will continue further. Carnival Corp. announced plans to order nine new ships for delivery between 2019 and 2022. Other details were absent though, i.e. which of its nine brands would use the vessels including the cost of the ships, their size, the number of passengers they would hold, the features they would include or the timeline for their delivery. Carnival said it had signed a strategic memorandum of agreement with both Fincantieri and Meyer Werft for vessels based on next-generation ship designs. Fincantieri will build five of the ships, while Meyer Werft will handle four. The agreements include options for more vessels in the future and are subject to conditions including financing. In May 2015, RCCL announced that it has entered into an agreement with Meyer Werft in Germany to order a fourth Quantum-class ship for delivery in 2019.

### *Implications for shore side activities*

A key implication of the scale of economies of scale is the increasing number of passenger movements per call. The example of the Mediterranean is illustrative. Within the last five years, the average number of passengers per cruise call increased by 13.3%, from 1,657 to 1,878 passengers per call (**Figure 1.6**). A decade before, a cruise port and thus a destination would host 734 less cruisers. Five ports in the Mediterranean host each year more than 3 000 passengers per call, whereas nine more ports host more than 2 000 passengers per call. The trends observed in the new buildings will sustain the overall trend of growing numbers of cruise passengers per visit. This increase demands that for a destination to sustain the presence of the cruise activity suitable port infrastructure that enables calls of bigger vessels needs to go hand-in-hand with sufficient levels of increased level of coordination between involved stakeholders, in order to ensure satisfactory operations without bottlenecks at times of arrivals and departures.

**Figure 1.6: Average Passengers/Call in Mediterranean cruise ports (2000-2014)**

Note: Data from 70 ports, representing approximately 80% of the market.

Source: MedCruise (2015).

The cruise ship supply is another important element of the economic footprint from cruise tourism. This relates to both the direct supply of goods and services through local companies and the infrastructure required to support the logistics of "non-local" supply, usually by container. The past decade has seen dramatic change in the nature of the on board cruise product and also in the size and design of the tonnage. There has also been a change in the nature of the logistics and supply chain, for reasons including technological advancements, and the re-engineering of the procurement processes within the major cruise lines. A decade ago, for instance, the supply chain requirements for most US-based cruise lines were centred around Miami and the Caribbean. Today, however, those same ships, as well as bigger newer ships operate in several regions of the world. This, together with the development of logistics and supporting IT management systems, has changed the face of cruise line supply. As a result, in several (major) ports and destinations there has been a large increase in traffic not only in terms of tourism/passengers and related goods but also, as a result of this, in logistics volume in general.

This change created many opportunities for the consolidation and globalisation of supplies. It has also an impact on the local and regional supply bases as improvements in the speed and smoothness of logistics operations requires several companies, both public and private, to coordinate. At the same time the major cruise lines have also developed their supply chain infrastructure and support so that they now have strategic control points within the major cruise destination hubs (i.e. Venice and Barcelona are two such hubs in the Mediterranean. However, there is an ever-increasing requirement by the cruise lines to offer more local, regional and specialised products as part of the on-board guest experience and, therefore, there is something of a reversal to the overall trend with increased local purchasing taking place. There is also an increased focus on the "real" cost of supplying goods to the ship - rather than simply the commodity cost itself. Increasingly, there is also focus on the environmental cost related to ship supply - and this is becoming much more prominent.

## 2. Cruise Ports: Characteristics, Performance and Competition

### 2.1 Cruise ports: Characteristics and Categorisation

With the growth in cruise business, cruise ports are gaining in importance. Selection of destinations is to some extent conditioned by the state of the cruise port to visit. The port is vital for assuring schedule reliability and for allowing a continuous passenger (dis)embarkation and transfer to onward journeys and/or day excursions. Once market characteristics result in cruise lines expressing an interest in established or potential destinations, and economic and geopolitical conditions permit, the competency of a destination relies on port and shore characteristics. The presence of sufficient port specific and port related infrastructures, the absence of intense use that might lead to congestion and process disruption, and the modernisation of infrastructures and processes so as to provide efficient and effective port services, are key to allowing the usage of a port as part of an itinerary.

Ports also realise the opportunity to provide services to an industry with wider local economic impacts. With the direct and indirect impact, including passengers and crew spending that can be diffused to the port cities or nearby touristic destinations, the ports interest to increase the cruise passenger movements has been supported, in general, by broader communities and decision makers. The rising importance of societal integration of ports with the associated port-cities<sup>20</sup> coincides with the growth of cruise shipping. Cruise activities turn to part of the agendas of port authorities and other port-managing organisations within an effort to link the port with visible benefits for the local economies.

While principal cruise ports serve derived demand, their own competitiveness stands to a certain degree as a cause for attracting cruise calls. Seeking to develop a new product, cruise lines have added, and continue to search, new cruise ports to add to itineraries and attract land based holidaymakers or cruises that would like to return. This search is associated with the features of destination, i.e. tourist attractions, shore excursions potential, geopolitical tensions. However, the state of ports and their infrastructure complexities, i.e. berth access, land infrastructure and logistics, maritime services such as pilot tugs, and landside operation such as security, procedures and luggage handling, affect the growth of cruising in a given port. Besides, the geographical monopoly does not exist in all cases, as many ports share proximity to tourist attractions with others.

A cruise port success relies on five different factors in order to succeed in becoming a chosen destination attracting calls and hosting cruise passenger movements. First, the extent to which the port is well positioned for integration in popular itineraries, in other words the location of the port. While cruise lines are interested in offering certain destinations, inclusion of ports in itineraries is also determined by the attractiveness of a port. A second factor is the tourist attractiveness of the destination/region. This is primarily determined by characteristics of the area (climate, social/cultural and/or natural factors, or proximity to touristic attractions), with the port industry and stakeholders having only a secondary influence, i.e. upgrading "tourist friendliness" via information and multilingualism availability. The third factor is the accessibility of the destination/region. Port proximity to airport that has airlifts to source markets, train station with good connections, and highways to serve the increasingly popular drive and cruise concept, might determine the potential of



the port to host turnaround or just transit traffic. The fourth factor is the port facilities and services on offer, with different types of facilities expected from transit and turnaround ports (**Table 2.1**). Port fees stand as the fifth success factor. The latter two factors are generally the most easily adaptable compared to the other success factors, yet a port that performs more weakly on location, tourist attractiveness and accessibility than another port is not likely to match the performance by making changes in facilities/services or fees.

To all these, one needs to consider the geographical proximity to other cruise ports. The conformity of its geographical location with the time and speed preferences of cruise lines, particularly the possibility to be included in itineraries involving several ports is a vital parameter, particularly for the development of a non-marquee cruise port. Today this formula results by the fact that ships ideally travel at 18 knots for 14 hours. This means that the maximum overnight distance is 252 nautical miles, whereas with the high speed of 20 knots the maximum overnight increases 280 nautical miles.

20

**Table 2.1: Expected cruise port facilities and services**

	Entrance & berth facilities	Cruise ship & services	Passenger services
Generic Facilities	Manoeuvrability	Dedicated cruise ship piers	Separation of pier uses in port
	Draught	Berth reservation process	Pedestrian paths
	Berth dimensions	Tug boats	Tourist information
	Anchorage	Pilotage	Cleanliness
	Bollards	Fuel services	Immigration quickness
	Fenders	Fresh water services	Port aesthetics
		Food and drink/ beverages	Ship to coach quickness
		Waste reception facilities	Sufficient availability of coaches/ taxis
		Quality of shipping agents	
		Speed of ship clearance	
Home-port only		Stakeholders cooperation (port and other local stakeholders)	
			Presence of passenger terminal
			Parking facilities (short & long term)
			Shops
			Passenger throughput range
			Security procedures
			Availability of baggage storage

Sources: Vaggelas & Pallis (2010); Policy Research Corporation (2013).

### ***Cruise Ports Categories***

Ports offering services to cruise lines vary in many respects (**Table 2.2**). The first group of the criteria for constructing a typology are similar to the ones observed in any port market. The second group reflects the peculiarities of the cruise market, including the catalytic influence of the "tourism" element of cruise shipping.

The nature of the facility – i.e. the presence of a dedicated terminal, or pier, or the usage of a facility used for more purposes than cruising – is among the first group of criteria. A second criterion relates to the ownership of the infrastructure and the operation of the terminal or facility. A growing interest by third parties, including cruise lines and specialised cruise terminal operators, to invest in port facilities, either via concessions or via greenfield projects, has been generated by the growth of



cruising. The size of the passenger movements hosted per year forms a third distinctive criterion, given that it corresponds to the serving of different cruise vessels and segments. The latter is also true as regards the fourth criterion, which is the function of the port in the cruise itinerary as a home-port from which a cruise departs and/or ends, or as a port of call visited by a cruise ship during the cruise itineraries. Home-porting also affects the numerical size as it secures double movement of a unique passenger at the same port. A fifth criterion for classifying cruise ports is the seasonality of the calls, which combines the transportation and the tourism elements of cruising.

The tourism element defines the type of attractiveness that a port generates<sup>21</sup>. Marquee ports are world-famous ones, absolutely necessary for every itinerary, as they attract passengers and form the most selling feature of the cruise itinerary. A discovery port is one that is not world-famous, but provides the sense of discovering an unknown treasure. Some home-ports are also marquee destinations, i.e. the three major home-ports in the Mediterranean Sea, namely Barcelona; Civitavecchia (Rome), and Venice. These are tourism hubs that have well-developed tourism infrastructure and an airport with direct international flights. Other ports-of-call are linked with marquee destinations (i.e. Naples (Pompeii) and Livorno (Florence, Pisa).

**Table 2.2: Cruise Ports: A typology**

Criteria	Elements
<b>1. Cruise Terminal</b>	1. Dedicated terminal   2. Dedicated pier   3. Multi-purpose facility
<b>2. Ownership &amp; operations</b>	1. Public   2. Private   3. Concession
<b>3. Size</b>	<ul style="list-style-type: none"> <li>• Major (&gt;1 million passenger movements)</li> <li>• Very Large (500 000 to 1 million passenger movements)</li> <li>• Large (250 000 to 500 000 passenger movements)</li> <li>• Medium (100 000 to 200 000 passenger movements);</li> <li>2. Small (Less than 100 000 passenger movements)</li> </ul>
<b>4. Function in itinerary</b>	1. Home-port   2. Port of Call   3. Both turnaround & port-of-call
<b>5. Seasonality</b>	2. Low (perennial port; 4 peak months less than 40% of visits); 3. Average (4 peak months 40 to 60% of visits); 4. High (4 peak months 60 to 80% of visits); 5. Very high (4 peak months more than 80% of visits)
<b>6. Attractiveness</b>	1. Marquee (“must see”) port   2. Discovery port
<b>7. Local and regional integration</b>	1. Destination port   2. Gateway port   3. Balanced port
<b>8. Accessibility</b>	1. Air hub port   2. Drive / 3. Train to port

Adapted from: Pallis and Rodrigue (2013); Rodrigue (2015).

The presence of different tourism attractions at a proximate or distant location results in a different classification of cruise ports. Destination cruise ports are the sole destination of a cruise visiting them. Beyond security and safety issues, they need to develop high-quality cultural or physical amenities, as neither excursions outside the port area nor significant amenities in proximity are important [examples: Labadee (Haiti), Cococay (Bahamas), Venice, Barcelona]. Gateway cruise ports act as the point serving major touristic destination, with shore excursions outside the port area are important (Civitavecchia, Livorno). A cruise port might be both a destination and a gateway port offering various balances between the amenities offered at the port and in the region (Miami, San Juan, Nassau, Piraeus, Lisbon).

Finally, ports might serve different cruise segments based on their accessibility i.e. whether they are closely linked with airport and dense flight network, or they provide an efficient train or highway

network to reach the port. Each group is associated with different concepts of cruising, whereas in some cases, especially island destinations, the quality of the airport facilities, the diversity and the density of the links are important.

## 2.2 Major cruise ports

Of the 12 major cruise ports, i.e. ports that hosted more than one million passenger movements in 2005, 11 ports were located in the Caribbean. The four major ones, all located in North America (Miami, Everglades, Canaveral in the USA and Cozumel in Mexico) hosted more than two million passenger movements. Six more Caribbean cruise ports (Nassau, Georgetown, St Thomas, San Juan, St Maarten), one port in the Pacific coast (Los Angeles) and one in Europe (Barcelona), were concluding the list of major cruise ports in the globe. The three big ones (Miami, Everglades, Canaveral) and Los Angeles were the ports of the world hosting more than one million home-porting passenger movements<sup>22</sup>. The picture of today is remarkably different. All port size groups referring to the hosting of passenger movements are far more populated, as the number of the ports hosting any cruise activities has increased and the size of cruise ports in terms of traffic accommodated per year is much bigger (**Table 2.3**). 20 major ports and 34 very large ones exist in Caribbean, Mediterranean and North America alone.

In North America there are today 7 major cruise ports. Neither the ranking order of the top four ports nor their classification as the biggest cruise ports of the world has changed during the last decade. What has changed though is the scale of the passenger movements they host. In 2014 Miami reached 4.47 million passengers, whereas the three others, namely Everglades (3.93) and Canaveral (3.87) in Florida, and Cozumel (3.4) in Mexico, hosted more than three million passengers. In total, the list of the USA port system includes 7 major, 8 very large, 8 large, and 9 medium-size cruise ports of recorded any cruise traffic in 2014, out of accommodating more than 200 000 passenger movements. The list of the 14 Canadian and 22 Mexican cruise ports includes two other very large cruise ports and six large ones.

Since 2005 three more ports have joined Nassau, Bahamas in the list of major ports. While Nassau is the biggest cruise port of the world hosting 3.57 million passenger movements, the Out Islands in Bahamas have almost reached a three million passenger traffic (2.95). Point Blanche exceeded two million passengers in 2014, and Georgetown in the Cayman Islands reached 1.61 million passenger movements. The Caribbean cruise port system also includes nine very large ports and five large ports. In addition to these, a substantial part of the traffic is accommodated in private islands or private facilities developed by cruise lines.

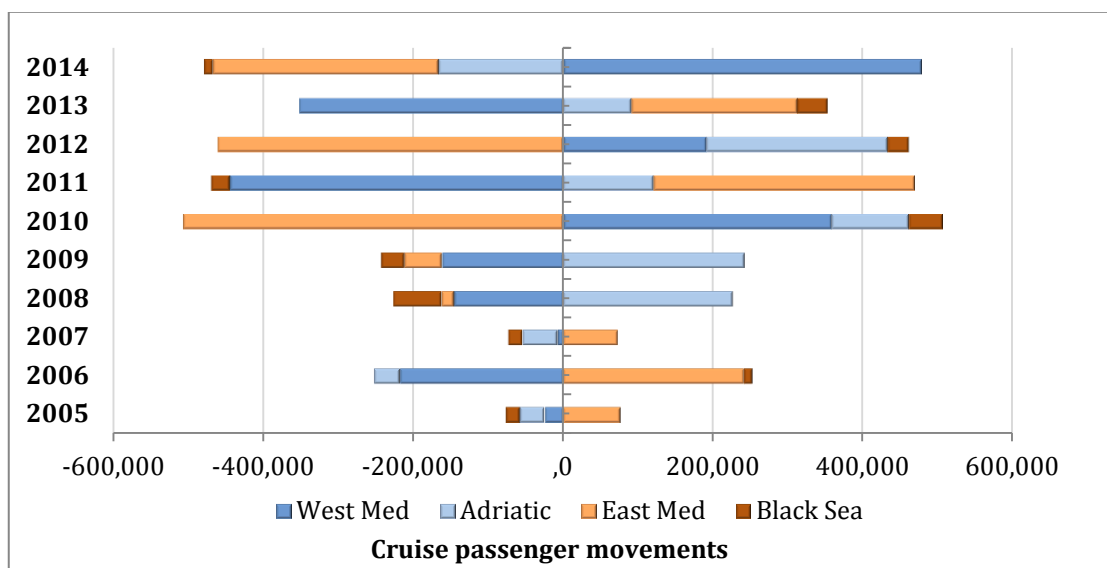
The total of major ports in the Mediterranean Sea stands at eight. The growth of the Mediterranean has been associated with the effective capacity of several ports to develop their activities and operations to serve the rapidly increasing number of vessels deployed and volumes of passengers wishing to cruise. Civitavecchia (2.14), a port constructed to serve Rome in the suburbs of the city, is the second port after Barcelona (2.36) hosting more than two million passengers per year. There are also 15 very large and 14 large ports and more than 100 other ports accommodating cruise passenger traffic. North Europe has also seen the development of a major port, Southampton, that in 2013 hosted 1.48 million passenger movements or the annual traffic of the UK, two very large ports, Hamburg and Copenhagen, and several more of smaller scale.

With recent strong growth in the region, ports in Asia have responded by undertaking a number of significant expansion projects. Singapore and Hong Kong remain the region's main cruise centres. Both of them have developed new state of the art terminals over the last years in a move to sustain

their leading role in the region. China is expanding rapidly in cruise terminal activities, developing major home-ports as well as ports-of-call. Shanghai is among the leading ports and is expected to join the group of major ports hosting more than one million passengers in the near future. Cruising in the region offers approximately 200 destinations across 18 countries and the introduction of new ports throughout Asia results in a vastly changing landscape.

Cruise port regions have their own internal dynamic, frequently overlooked when the focus is on regional level analyses. Taking as example the second major region, the Mediterranean and its adjoining seas, a high degree of dynamics, and volatility, within the cruise port system is exposed. The "net shift" analysis between the existing port sub-systems is revealing of the dynamics and significant volatility of cruise activities per region that accompanied the growth of the last decade (**Figure 2.1**). Short-term volatility in traffic and shifting of shares, generate concerns to decision makers who are interested in uninterrupted growth. On the one hand, both these trends might be justified by the fact that cruise lines are continuously renewing their itineraries; on the other hand, these trends may be the result of the volatile performance, even stagnation, of some ports in the region, i.e. those in the process of adjusting facilities and services to be offered to new types of vessel before achieving more calls.

**Figure 2.1: Shift analysis for the Mediterranean cruise port system**



Note: Based on a sample of 70 ports covering approximately 80% of regional traffic

Source: Pallis and Arapi (2015).

Table 2.3: Cruise Ports by Size in Major Cruise Markets (2014)

SIZE	USA	MEXICO /CANADA	CARIBBEAN	MEDITERRANEAN SEA	NORTHERN EUROPE
<b>Major Cruise ports</b>	(7) Miami (4.47) Port Everglades (3.94) Port Canaveral (3.86) ----- St. Thomas/St. John (1.98) New York/New Jersey (1.63) Galveston (1.29) San Juan (1.16)	(Mexico: 1) Cozumel (3.40)  -----	(4) Nassau/Paradise Island, Bahamas (3.57) The Out Island, Bahamas (2.95). Pointe Blanche, St Martin (2.00) ----- Georgetown, Cayman Islands (1.61)	(8) Barcelona (2.36). Civitavecchia (2.14) --- Venice (1.73) Balearic Islands (1.58) Marseille (1.31) Naples (1.11) Piraeus (1.05) Savona (1.01)	(1) Southampton (1.50)
<b>Very Large Cruise ports</b>	(8) New Orleans; Juneau; Tampa; Ketchikan; Seattle; Skagway; Key West; Los Angeles	(Mexico: 1 / Canada: 1) Ensenada; Metro Vancouver	(9) Grand Turk Cruise Center; Grand Bahama, Falmouth; Port Zante, Bridgetown Oranjestad, Castries; Willemstad, St. John's.	(15) Dubrovnik; Tenerife Ports; Genoa; Kusadasi; Santorini.; Corfu, GR; Livorno; Mykonos; French Riviera Ports; Istanbul; Katakolo, Bari, Palermo; Valletta; Lisbon	(2) Kopenhagen; Hamburg
<b>Large Cruise Ports</b>	(8) Honolulu; Baltimore.; Palm Beach; Jacksonville; Boston; Hilo; San Francisco; Nawiliwili	(Mexico: 4 / Canada: 2) Majahual; Progreso; Cabo San Lucas; Puerto Vallarta; Victoria; Halifax	(5) Montego Bay, Roseau, Ochos Rios, St. George, Pointe à Pitre	(14) La Spezia, Madeira Ports, Tunisian Ports, Málaga, Valencia, Toulon- Var Provence, Messina, Rhodes, Kotor, Gibraltar, Heraklion, Monaco	(12) St. Petersburg; Tallinn; Stockholm; Bergen; Geirangerfjord; Stavanger; Le Havre; Oslo; Amsterdam; Zeebrugge; Flåm; Dover
<b>Medium Cruise ports</b>	9	-	1	> 10	>5
<b>Small Cruise ports</b>	13	25	2	> 100	>100

Note: Major Cruise ports: more than 1 million passenger movements; Very Large Cruise ports: 500 000 to 1 million passenger movements; Large Cruise Ports: 200 000 to 500 000 passenger movements; Medium Cruise ports: 100 000 to 200 000 passenger movements; Small Cruise ports: less than 100 000 passenger movements

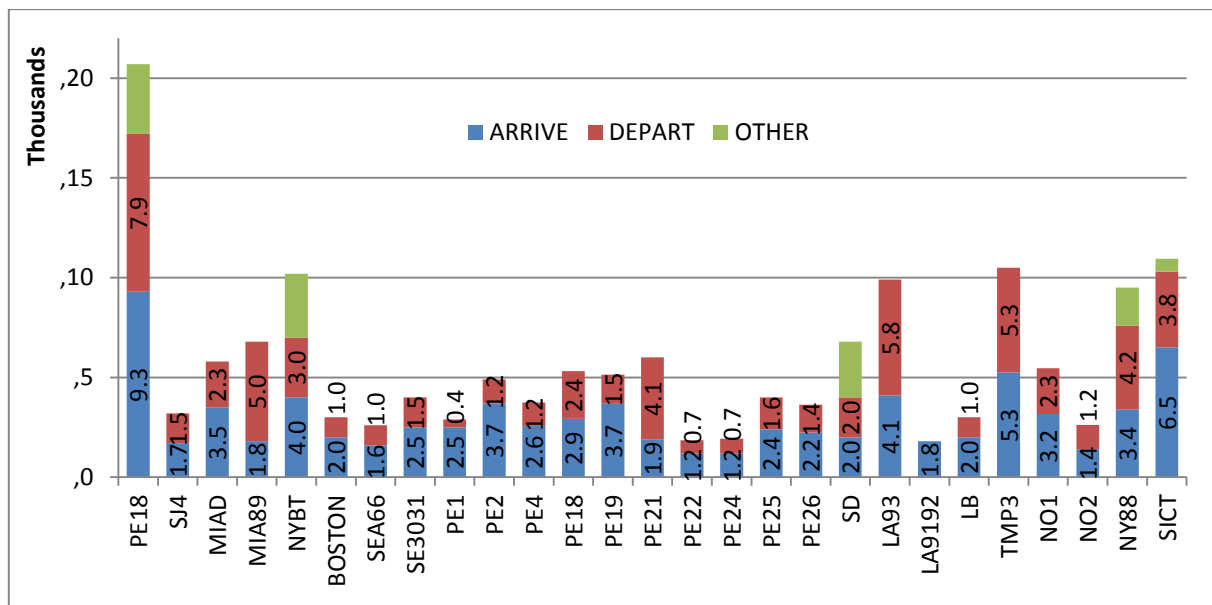
Sources: AAPA (2015a); AAPA (2015b); MedCruise (2015); various ports websites.

### 2.3 Specialisation patterns

The growth of cruise activities implies operations of considerable size. The latter has been instrumental to the development of specialised port terminals to serve effectively passengers and consequently cruise lines. The example of the marquee port of Venice, suggests that a total of 1.7 million cruisers per year results in 47 cruise companies, 87 cruise ships, 3.3 million pieces of luggage, 51 000 cars parked in port facilities, and approximately 33 000 people transiting daily in high season period. This demands a total surface of 300 000 m<sup>2</sup> of ground area, of which 93 000 m<sup>2</sup> of walkable covered spaces, several berthing places, five car parks for more than 2 000 places; 123,700 m<sup>2</sup> of maritime basin and 3,431 linear meter of quays to host up to 12 ships.

The "terminalisation" observed in the cargo port sector<sup>23</sup> is today part of the cruise port industry as well. The days that cruise vessels were calling at multi-purpose terminals or temporary docking facilities have disappeared. Specialised cruise terminals attract vessels and passengers, and whenever possible act as home-ports. Larger ports develop more autonomous terminals which allow a variation of development patterns and reflect the specialisation of the cruise vessels and products. All major ports in the USA have developed a number of cruise terminals operated under different ownership schemes, while approximately half of the ports hosting more than 100 000 passenger movements in the Mediterranean Sea operate more than one cruise terminal. These terminals use a substantial space in the port zone (**Figure 2.2**) to handle cruise calls and passenger movements.

Figure 2.2: Cruise terminal area comparison (m<sup>2</sup>)



Source: Luis Ajamil (2010).

In addition to infrastructure (such as quays construction, dock expansion, potentially dredging of channels and basins, seat waiting areas and gangways that improve traffic flows and accessibility), the development of modern cruise terminals also involves shore side projects. In many cases, land reclamation, retail, restaurants and hotels are of equal importance. The multi-purpose use of the cruise terminals is of different type. Due to the co-location of consumption activities the terminals are

"people friendly", rather than "cargo friendly"; thus they might be used with open accessibility to public, for the organisation of events, or other usages. It is especially the case when the seasonality of cruise activities implies that several of these terminals host cruise ship calls only some months of the year.

Beyond the change of usage of existing infrastructure, or the development of greenfield projects, recent developments have also revolved around adaptive reuse of brownfield assets; in the US alone such cases can be found at both the East (Brooklyn – Galveston) and the West (San Francisco – San Diego) coast. In all cases, cruise port infrastructure development takes far longer than building new cruise ships so ports might lag to market developments.

### *Seasonality*

The seasonality of cruise activities is one of the major characteristics of the cruise markets. A 40-week cruise season is considered by many as maximum for cruising a region per year, yet this is achievable only by some operators. One of the implications is that cruise terminals remain unused for a lengthy period. Those responsible for developing cruise ports might also be more sceptical for the devotion of bigger parts of the port zone to cruising. The reason is that this is an activity marked by seasonality when other factors, such as the port land scarcity, and the request for more space by cargo port activities, add pressures to devote available port land to cargo. Societal pressures for year round utilisation, so that the port-city and related destinations that enjoy the benefits of cruise tourism put pressure on ports to develop conditions for expanding the existing.

Some cruise regions are less affected by the seasonality of activities. Caribbean is one of the cases that cruises run throughout the year and the number of monthly passengers is fairly stable throughout the year in markets serviced by North American ports with passengers between 800 000 and one million per month and a December/January peak season. However, a closer look at the North American market reveals specific seasonality patterns<sup>24</sup>. The Caribbean market and its sub-regions obviously dominate to account for more than 90% of the passengers during the high winter season and around 55% of the passengers during the low summer season. The seasonality of Alaska, Bermuda and Canada/New England is also evident, with cruise lines attempting to optimize the utilization of their assets year round by repositioning to take advantage of the seasonality of cruise markets. An unexpected pattern is the lack of seasonality for the Bahamas, mainly the outcome of the strategies of the main cruise lines to build private ports reserved for their exclusive use.

Seasonality does not restrict the development of a cruise region. The Mediterranean and its adjoining seas evolved as a most dynamic cruise region with a very seasonal pattern of cruise activities (**Table 2.4**). Each month of the May-October period host, in a most balanced way, traffic shares of 10-12%. In total, 81.3% of the 2014 cruise passenger movements occurred during this six-month period. The share of the total passenger movements registered during the three winter months (January, February, December) stands at only 7.5%, of the total annual movements. This has triggered discussion among stakeholders on how to achieve year-round activities – without concrete results for the moment.

Detailing the total number of cruise calls per month reveals that winter activities are linked with single call operations of different size than during the rest of the year. In the Mediterranean example, less than 400 calls happen from December to February, yet these months each call is associated on average with more passengers per month; January is the month of 2014 with the highest rate of passengers per call (2,314), followed by February (2,153) and December (2,095). Cruise lines develop less itineraries, as repositioning of vessels is taking place, with cruises marked by a substantially

higher level of utilization. From a port and destination perspective respective adjustments of operations is essential.

**Table 2.4: Seasonality in the Mediterranean Sea (2014)**

Month	Total Cruise Pax	% of Total Pax	Total Cruise Calls	% of Total Cruise Calls	Pax/Call
January	664,074	2.67%	287	2.18%	2,314
February	512,506	2.06%	238	1.81%	2,153
March	754,205	3.03%	361	2.74%	2,089
April	2,210,709	8.89%	1,236	9.38%	1,789
May	2,611,372	10.50%	1,572	11.93%	1,661
June	2,753,546	11.07%	1,428	10.84%	1,928
July	2,889,153	11.61%	1,442	10.95%	2,004
August	3,168,154	12.73%	1,539	11.68%	2,059
September	3,264,443	13.12%	1,808	13.72%	1,806
October	3,437,962	13.82%	1,935	14.69%	1,777
November	1,687,949	6.78%	860	6.53%	1,963
December	699,886	2.81%	334	2.54%	2,095

Source: MedCruise (2015).

### *Cruise Home-ports*

Becoming a home-port, the starting or/and ending point for a cruise itinerary, is a major strategic goal for a number of cruise ports. The increased cruise activity and the provision of additional port, port related services to the major lines and the visit of the port-city by a considerable number of cruise passengers that typically spend more time at the destination they embark leads to increased revenues for the port authority, the terminal operator, if any, but also for the port-city.

Criteria for selecting a home-port relate with the characteristics of each port as well as the criteria that a cruise company uses in order to identify and access a potential home-port. Despite the case-by-case approach in determining a home-port, there are some major conditions that a cruise port must fulfil in order to become a home-port. The first condition is the presence of adequate port infrastructure. Operational depth at the dock, the length of the pier, the existence of a passenger terminal can be included in this category of elements. Berth allocation schemes in order to allow for the programming of the cruise schedules if possible more than two years in advance are seen by the cruise lines as an operational practice facilitating home-port but also cruise calls. The second one is the efficient provision of an extensive range of services to the cruise ship, the passengers and the crew. These services include security equipment, warehouse and baggage handling equipment, parking area for coaches, taxis and private autos supplies provision, bunkering, ship repairs and any other services that provide value added to the cruise ship and offer to the cruise passengers the necessary facilities to support transportation to and from the cruise ship.

The third condition is the connectivity with other transport modes. The existence of a well-connected international airport, airlift capacity to source markets, ideally combined with tourist attractions so as to be a cruise destination as well, is of ultimate importance. Less important, although desirable is the existence of a train station as well as the connection of the cruise port with road networks. The fourth condition is the ability of the port-city to host the cruise passengers. The majority

of cruise passengers choose to stay at the port-city prior their embarkation or after their disembarkation from a cruise ship. As such the port-city must have the necessary infrastructures able to accommodate the cruise passengers. These infrastructures include hotels, restaurants etc. Finally, proximity to a source market provides drive from home to port convenience advances the potential of securing cruise lines selection as a home-port. The proximity reduces the time needed as well as the relevant cost for passengers in order to travel from their place of residence to the cruise ship and vice versa.

Asked to rank the most important factors determining the selection of home-port issues out of 81 potential criteria<sup>25</sup>, cruise lines prioritise first the issues related to air transport (availability and capacity of international airport; air lifting connections and their reliability), followed by port infrastructure related factors (capacity for handling large numbers of passengers at same time; depth of the cruise port; infrastructure for (dis)embarkation; services related with security), and then criteria related with the external environment, such as political stability and the feeling of safety and security in the destination. Once these conditions exist, cruise lines examine potential incentives offered to start home-port operations and the cost of services to cruise ships. As the cruise industry's external and internal environment is changing, the crucial elements also include considerations about the potential to develop new and more fuel-efficient itineraries. As expected, the functionality of port operations, port infrastructures and superstructures are also vital parameters.

Variation exists between regions as regards the preferences of passengers to embark from a specific port. In the US market driving distance from home, parking, and customs immigration procedures, are top of the list along with convenient airlift into port city, with cruise terminal facilities and options for pre/post stays and surrounding port area interest following<sup>26</sup>. However, when in the USA driving up to four hours is acceptable (i.e. Houston to Galveston Texas), in Europe the respective limit is lower to a maximum two hours (i.e. Milano to Savona). On the other hand, Europe has shorter train access to ports, and major markets such as the British and the German one have taken advantage convenient train-to-cruise patterns of less than three hours train journeys (i.e. Southampton and Kiele, respectively).

Home-ports tend to be linked with specific source markets. This is due to proximity, access options, and not least preferences of cruise passengers to visit certain destinations. In Europe where multiple home-ports exist, Americans use extensively Southampton and Dover in the UK, Barcelona in Spain, Venice and Civitavecchia in Italy. British passengers depart from the UK (Southampton; Dover), Spain (Malaga, Mallorca) and Malta. Germans depart from Hamburg, Kiel and various Mediterranean ports, whereas other nationalities (i.e. Italians, Spaniards, French and Scandinavians) take advantage of the presence of home-ports in their countries.

Each cruising area has its home-ports, with the balance of traffic between the hosted home-porting and transit passenger movements varying from port to port (**Table 2.5**). The biggest home-ports in terms of size are located in the U.S.A., as this is this is the major source market for cruise passengers. The biggest of all is Miami, with passengers moving in and out of a cruise trip standing at 50% of the total movements. The port is favoured by its proximity to the biggest cruising area in the world in terms of passengers, the Caribbean. Also Miami has managed to attract a significant number of cruise lines have their premises in Miami. The same ration 50:50 of transit/home-port passenger movements is observed in the case of the other two major world home-ports, Port Everglades and Port Canaveral. Some other ports though, i.e. New York, Galveston, passengers beginning or returning from a cruise represent the total.



**Table 2.5: Major home-ports per region**

Cruising Region	Major home-ports	Home-porting passengers	Total cruise passengers	Home-porting as % of total cruise traffic
<b>North America &amp; Caribbean</b>	Miami (USA) *	2 015 000	4 079 000	49.4%
	Port Everglades (USA) *	1 845 000	3 600 636	51.2%
	Port Canaveral (USA) *	1 701 000	3 717 586	45.7%
	Galveston (USA) *	1 208 802	1 208 802	100%
	New York (USA) *	600 000	620 265	96.7%
<b>Mediterranean</b>	Venice	1 509 097	1 733 839	87.0%
	Barcelona	1 222 487	2 364 292	51.7%
	Civitavecchia	730 938	2 140 039	34.2%
	Savona	668 473	1 018 794	65.6%
	Balearic Islands	606 549	1 587 064	38.2%
<b>Rest of Europe</b>	Southampton (UK) *	1 592 000	1 646 000	96.7%
	Hamburg (Germany) *	560 500	590 000	95.0%
	Copenhagen (Denmark)	144 000	740 000	19.5%
	Stockholm (Sweden) *	64 000	467 000	13.2%
	Lisbon (Portugal)	41 465	500 872	8.3%

\* 2013 data

Sources: FCCA &amp; BREA (2013); CLIA Europe (2014); MedCruise (2015); official websites of the port authorities.

In the Mediterranean, the leading homeport is Venice, which also has the highest percentage of home-port movements (87%). For Barcelona and Savona the number of home-porting movements is of lower share, and the share is lower than 40% in the case of the two other ports, Balearic Islands and Civitavecchia. Three of the five major home-ports (Venice, Civitavecchia and Savona) are in Italy. The country is strategically located at the centre of the Mediterranean Sea, allowing the development of cruise itineraries both to the West and the East Mediterranean. It is a major source market for cruise passengers, but also close to other major source markets like Germany and France and, easily reachable via all means of transportation. Regarding North Europe, the major home-ports are Southampton, UK and Hamburg, Germany. The proximity to cruise source markets seems to play a vital role for the rising of these home-ports, as UK is the biggest source market in Europe and Germany holds the second place.

### *Private Islands*

As ships get bigger and cruise line fleets grow, some Caribbean ports have generated traffic jams and crowded shopping malls due to the visit of 15 000-plus passengers disembarking by as many as 8 to 10 calls on an average day. Responding to this challenge in the Caribbean and Bahamas Cruise Lines operate and offer private islands, peninsulas, or beaches as a port of call on many of their Caribbean and Bahamas itineraries (**Table 2.6**).

All the mainstream lines except Carnival have private islands, or parts of islands, that are included as a port of call on many of their Caribbean and Bahamas itineraries. While few have any true Caribbean culture, they do allow cruisers a guaranteed and more private experience. These private facilities are all within one cruise day from the home-ports of Florida, offering the option of short three to four days cruises to a quiet and safe destination. This represents a mass market that remains constantly serviced by large ships since it is the least expensive to service from southern Florida ports of call. Aside from few, neither the islands nor private facilities have a large dock, so passengers are ferried ashore by tender. Private resorts are a business solution to the fact that most cruise destinations

have actual people living in them, whereas thousands of fellow cruise passengers may share the place when a cruise vessel arrives. From a cruise line's perspective, these islands do not only fulfil the target to provide passengers with a place to enjoy a day, but also keep more of the spending (bar, souvenir, shore excursion) in the cruise line. This concept has been expanded to more remote locations such as Mahogany Bay in Honduras (Carnival) or Puerto Costa Maya (Royal Caribbean) in Mexico.

**Table 2.6: Private islands & peninsulas in the Caribbean and Bahamas**

Cruise Line	Private Island	Features
<b>Costa Cruises</b>	Catalina Island	Off the coast of the Dominican Republic
<b>Disney Cruise Line</b>	Castaway Cay	Disney has developed less than 10% of the 1 000-acre, 3.2-mile island; The private facility allows vessels to dock
<b>Holland America Line</b>	Half Moon Cay	55 acres located on the Bahamian island of Little San Salvador,
<b>MSC</b>	Cayo Levantado	Rainforest island off the coast of the Dominican Republic's Samana Peninsula.; Run by a Dominican company with whom MSC has scheduled port calls.
<b>Norwegian Cruise Line</b>	Great Stirrup Cay (	Beachfront in the southern Bahamas; The very first private resort developed by a cruise line in the Caribbean.
<b>Carnival</b>	Princess Cays	40-acre beachfront strip in Eleuthera in The Bahamas
<b>Royal Caribbean Intl &amp; Celebrity Cruises</b>	Labadee	270-acre peninsula along Haiti's north coast
<b>Royal Caribbean Intl &amp; Celebrity Cruises</b>	CocoCay	40-acre landfall in Bahamas' Berry Islands

Source: Various cruise line websites.

## 2.4 Governance of cruise ports

The growth of the cruise industry has not left unaffected the governance structures of cruise ports. With the cruise market gaining in size, several ports proceed in reforms allowing further involvement of third parties – whether these are terminal operating companies, cruise lines, or other investors – in the governance, management, and operation of cruise terminals. In North America, Caribbean, and all those cases that such models had prevailed since the early days of modern cruise, i.e. mostly, the role of private investors and operators expanded. The discussed cases of private islands are part of these trends. In Emerging ports that developed in recent year, whereas they had previously hosting minor cruise calls and thus had remained preoccupied with cargo handling, the cruise activity gained operational autonomy, with public authorities allowing several forms of partnerships aiming to finance growth and not least develop strategies to serve it.

The public sector remains active, not only in governance but also in the operation of cruise ports, particularly in Europe. In several ports greenfield or other developments are financed by the public sector under the premise that cruise terminals spur economic activity by facilitating the growth of tourism and associated employment and spin-off employment generated through provisioning activities, security requirements, events, spending by crews. Where funding is available the rationale is that the benefit-cost multiplier is bigger than one, and development of ports is a good idea. Some terminals are financed (Malaga) or have secured financing (Piraeus) by the European Union, as terminal infrastructure is considered to be engine for regional growth. In some other cases the port authority develops dual strategies, i.e. in Barcelona concession of a terminal was developed hand-in-hand with the establishment of a corporate entity in which it was involved as majority shareholder but

latter decided to disinvest. Of course, any option is subject to location or marine infrastructure restrictions.

A key part of the governance of public or private entities managing cruise ports lies in achieving a balanced relation with cruise lines so as to secure inclusion in itineraries. Relations between ports, cruise lines, and, if present, operators are different from port to port. Structured around infrastructure conditions supplied, coordination mechanism involving other stakeholders, financing, risk distribution, local traditions, labour practices, there are not many such relationships being the same. Terms of services such as competition on berths, long-term engagement, the setting of port tariffs, berth allocation schemes, practices in place of cancellation of calls for other reasons than major force, the way to promote excursions when competition by local entities and cruise lines is frequently tense, taxi and other public transport availability, are also shaping the relationship between the industry demanding the service (cruise lines) and the industry supplying them (cruise ports).

### *Coordination of stakeholders*

At the same time, managing bodies of cruise ports retain a key role in the coordination of stakeholders. With ports investing in new terminals, the coordination to provide efficient transportation links and access to destination is a complementary investment, as it generates further interest of cruise lines in including the port in their itineraries. They also retain a leading role in the promotion of the cruise related cluster developing in and around a port, and mobilize destination authorities, entrepreneurs and chambers in order to maximize economic returns for the port and the local economy.

The latter includes interactions with government and private stakeholders that guarantee the presence of professional services in different sectors such as customs, health authorities, crew services, as well as an effective supply chain. This chain is important as increasing investments in new terminals are accompanied by investments in facilities for supplies, services and logistics. Cruise ship supply is an important element of the economic footprint from cruise tourism. The volume of the of goods and services and the supporting logistics for supplying both the local and the "non-local" goods that are essential for completing a cruise, has increased in the recent past. The changes in the nature of the on-board cruise product are combined with changes in the nature of the logistics and supply chain that develops in the visiting ports. Technological advancements, the changing needs of the cruise lines, and the re-engineering of the procurement processes within the major cruise lines are all combined with expanding range of passenger requirements and consumer demands and expectations. Major cruise lines have also developed their supply chain infrastructure and support so that they now have strategic control points within the major cruise destination hubs (i.e. the Mediterranean, and specifically Barcelona, is one of those main hubs). However, there is an ever-increasing requirement by the cruise lines to offer more local, regional and specialist products as part of the on-board guest experience and, therefore, there is kind of a reversal to the overall trend with increased local purchasing taking place. Developing conditions to provide such supplies, but also addressing congestion and any environmental costs related to cruise ship supply continue to rely on cruise port authorities.

To secure coordination, several cruise ports managing authorities develop strategic partnerships with other stakeholders. Reviewing practices in the Mediterranean, these strategic partnerships most commonly include tourist organisations and organisations representing the destination and, to a lesser extent, other stakeholders or cruise lines. Integrating port and the destination stakeholders is not an easy task though. While there is need for cohabitation between ports and all involved stakeholders, there is no clear of what is the share of responsibilities in enhancing this cohabitation. This is because there are many stakeholders potentially involved at multiple levels. From a port perspective, it is clear

that the port authority leads the way. Private actors express themselves either through chambers or corporate entities, yet from local and municipal authorities this participation is perceived in different ways by different authorities, with policy regimes and bureaucracy making the expression of interest in contributing more difficult. On the other hand, schemes of joint direct investments are rare. The most popular type of strategic coordination develops between port authorities. Cruise is based on the developments of itineraries rather than destinations, thus working together with other ports in the region is part of the governance tools used frequently. Besides several cruise ports have only recently evolved and benchmarking and know-how exchanges are vital for many.

### *Cruise terminal concessions*

The development of cruise terminals is not anymore an issue addressed by public port managing entities. Several cruise ports operate under government concessions to third parties. Generally a concession model requires the end-user to make a lease payment to the public entity in charge of ownership and regulation. Port authorities facilitate the presence of concessioners committing investments and volumes while they enjoy lease revenues and destinations enjoy further benefits such as retail, and passenger spending ashore. As regards the spectrum of concession formats, the landscape of cruise ports is not differing from what happens in the cargo sector, especially containers. Variations between local practices also exist (**Table 2.7**). A major difference exists though, and that is the fact that in cruise ports it is the cruise lines rather than the role of stevedoring companies that have a most dynamic presence.

Cruise lines have demonstrated a keen interest in investing in cruise ports to give growing berth availability and resolve capacity issues in a number of ports of call. These and other cruise line companies do so in order to guarantee access for their ships at port infrastructure they consider of best quality, optimal port experiences and atmosphere to cruisers, and that allows to integrate transportation operations on core itineraries. Cruise lines invest either alone or with partners, endorsing case-by-case approaches. Generally, they collaborate with local, private or governmental entities by providing management and/or financial assistance and often enter into long-term usage arrangements. Partnering with ports is not rare. In this vein, cost-sharing schemes, even with direct government involvement (i.e. St Petersburg), represent one of the existing models. Another model is a cruise line securing long-term commitments and loans subordination for building new docks and developing infrastructure. There are also cases that the cruise lines invest with the relevant government authority and various other strategic partners established to develop and/or operate the port facilities, by providing direct development and management expertise, or certain in limited circumstances, by providing direct or indirect financial support. In exchange of their involvement cruise lines generally secure preferential berthing rights for their ships. Yet cruise ports and facilities remain a very small investment for cruise lines that are mainly investing in cruise ships. In 2012, investments in cruise infrastructures, together with lands and buildings owned by the cruise lines, represent 2.8% of the assets owned by Carnival Corporation and 1.8% of those owned by RCCL.

Private investors have also been involved, through traditional joint ventures or else. There are examples of ports developing through cost sharing between private investors and cruise lines in the context of a concession (La Goulette, Tunisia), cases of privates that have gained the right to develop and operate ports (i.e. Istanbul), as well as rising multinationals involved in the operation of several ports. Global Ports Holding (GPH) operates alone or in partnership terminals in different countries, and following the recent addition of Lisbon to the existing ports portfolio of Barcelona, Malaga, Singapore, Kusadasi, Bodrum and Antalya, it will reach 10 million cruise passenger movements worldwide, making it the world's largest cruise operator.

**Table 2.7: Examples of Cruise Terminals Concessions in the US and the Med**

	Port	Private Party Contractor/ Operators	Years	Since
USA	Galveston	Royal Caribbean International, Carnival Cruise Lines, and CH2MHILL Design-Build Greenfield cruise terminal project; Innovative financial scheme; Fee waiver and revenue rebate in exchange for minimum passenger guarantees	10	2002
	Port Everglades	Redevelop waterfront facility and infrastructure around Terminal 18 Initial investment in exchange for a 10 year minimum passenger; guarantees with Royal Caribbean International	10	2009
	Canaveral	Design-Build project for Cruise Terminal 6 to enhance embarkment & dismemberment function	n.a.	2011
Mediterranean Sea	Bar, Montenegro	Global Ports Holding (GPH) (cruise terminal operator)	30	2013
	Barcelona, Spain	<i>Carnival (Cruise Line) operates Palacruceiros Terminal.</i>	25	2007
	Barcelona, Spain	<i>Creuers Del Port de Barcelona</i> – (purpose company created by PA and investors; in 2014 the PA decided to disinvest and RCCL and Global Ports became the new shareholders)	30	2000
	Bodrum, Turkey	<i>Bodrum Cruise Ports</i> (owned by GPH 60%, and investing companies Setur and Yüksel Çağlar)	13	2008
	Cagliari, Italy	Partnership between RCCL (cruise line) and <i>Venezia Terminal Passeggeri Spa</i> (purpose company).	n.a.	2012
	Cannes	<i>Chamber of Commerce of Nice Cote d'Azur</i>	50	1965
	Civitavecchia	<i>Roma Cruise Terminal</i> (purpose company created by three cruise lines (33.33%): <i>Costa Crociere</i> , <i>RCCL</i> , <i>MSC Crociere Spa</i> (participating through its financial holding <i>Marinvest Ltd</i> ))	n.a.	2006
	Istanbul	Doğuş Group (conglomerate active in eight service sectors (81%) and BLG Capital (real estate private equity) (19%).	30	2013
	Kusadasi	Partnership between RCCL (cruise line), (27.5%) and Global Ports Holding (GPH) (cruise terminal operator) (72.5%)	30.	2003
	Lisbon	Consortium comprised of RCCL (cruise line) (20%), and Global Ports Holding (GPH) (cruise terminal operator) (40%) <i>Creuers del Port de Barcelona</i> , S.A. (10%) and Grupo Sousa – Investimentos (30%)	35	2014
	Marseille	<i>Marseille Provence Cruise Terminal</i> (private company owned by three cruise lines: <i>Costa Crociere</i> - 40%, <i>MSC</i> - 40% and <i>Louis Cruises</i> - 20%).	25	2009

Updated information based on: Wang et al (2014).

While in Europe the managing port authorities of the ports decided to dissociate from the operation of cruise terminals, matching the American cruise port model of landowner port authorities, some endorsed a different path of involvement in cruise operations. They created companies to operate cruise terminal facilities taking advantage of their experience and very specific know-how they have already developed, with port authorities retaining stakes. Some of these companies are expanding offering services to other ports in Mediterranean and abroad (**Table 2.8**). The Italian Stazioni Marittima (Genoa, 21.8% owned by the Port of Genoa) and Port of Livorno 2000 (owned for 72% by the Port of Livorno), have decided to expand their activities in managing other cruise infrastructures within Italy; as did the owned by private and public regional investors Venezia Terminal Marittima in Venice. The Spanish Creuers del Port de Barcelona started its operations as a public port authority subsidiary. It then expanded its portfolio at national level by operating an additional cruise port in Spain, and at international by investing in the development and operation of a new cruise terminal in Singapore.

Private entry in cruise ports is associated with potential challenges. While this presence acts as an enabler for the growth of the cruise sector, it also implies a need to secure long-term access for all.

With many cruise ports owned, or controlled, by large cruise operators, some raise concerns for limited access to many competing cruise lines. A second consideration is to minimize the potential of the private port operator entry to disrupt Port Authority and Cruise Lines local objectives, via the alignment of various interests.

**Table 2.8: Examples of Cruise Terminal Operators investing in other terminals**

Terminal operator	Terminal managed	Comments
Creuers del Port de Barcelona	Barcelona	100%
	Malaga	80%
	Marina Bay in Singapore	Joint venture with SATS one of the companies which operates the airport of Singapore
Stazioni Marittima (Genova)	Genoa	100%
	Messina	Joint venture with MSC Cruises
Venezia Terminal Passeggeri	Catania	Joint venture with MSC Cruises, RCCL and Aloschi & Bassani (port agent, tour operator and ground handling company)
	Cagliari	Joint venture with RCCL
	Ravenna	Joint venture with RCCL and Aloschi & Bassani
	Venezia	100%

Source: Cruise Management Consulting (2013)

### ***Port and terminal costs***

Cruise ports charge fees for a variety of facilities and services offered to vessels and passengers (**Table 2.9**). In addition, fees might be levied for waste disposal and other environmental related issues and certain supplies. Some fees are only levied in case of turnaround calls (e.g. luggage handling), whereas not all types of fees are charged in each port. The type of use of each of these charges differs between ports as well, with ports being able to follow different partners depending on the type of the call, the size of the traffic it generates, or even the day and the month that the call is taking place.

Some of the different cost components have a substantial share in the total port fees, the most profound being passenger fees. There is no rule as regards the ratio of different cost components as in reality ports levy a select group of cost components, and it is possible that certain cost components are exchangeable or not excludable. In general, port fees increase with the ship size. They also depend on the type of call, with port fees for a transit call commonly being substantially lower than the ports fees for a turnaround call.

As regards environment fees, ports levy the discharge of the different types of waste, with practices ranging from a minimum fee applied when waste is discharged to a mandatory waste fee even when no waste is discharged, or to a variable fee depending on the quantities that are discharged. On the other hand, the fee for supplies – such as onshore or barge supplies of fresh water – apply on the basis of quantities of supplies offered.

**Table 2.9: Types of fees levied in cruise ports**

Frequently levied fees	Less frequently levied fees
Pilotage	Chamber of shipping / commerce fee
Passenger fees	Gangway fee
Port dues	Immigration
Mooring and unmooring	Navigation dues
Tug / Towage	Passenger luggage storage
Dockage / Anchorage fee	Shuttle bus
Light(house) dues	Tender
Security costs	Crew fees
Passenger luggage handling	Customs / clearance
Terminal dues	Other compulsory fees
Anchorage dues	Sanitary dues

Based on: Policy Research Corporation (2013)

### ***Performance assessment***

There are two groups of criteria applied when assessing the performance of a cruise port. The first group relates to the cruise lines, and the type and quality of services offered when calling a port. The second group of criteria refers to cruise passengers with the emphasis being on the experience when visiting a port and the destination. To these, one might add the level of compliance to an increasing set of relevant legislation, i.e. on environment-related themes, via the application of best practices.

In the first category, accompanying quality port infrastructure with efficient terms and execution of operations, together with acceptable costs of usage, stand as top performance criteria. Addressing infrastructure needs is the major issue with different elements conditioning a competitive cruise port. The infrastructure of the terminal (quay, waiting areas, security etc.), and the transport infrastructure in and outside the port offered at both the maritime and the landside need to ensure a good reception of port guests and their mobility to and from the port. Terminal performance to match frequency or likelihood of demand is linked with the time to clear the ship in a given terminal design. From a cruise line perspective, performance increases through improved flow and capacity, i.e. providing maximum processing capacity at the peak load. From a cruise terminal operator it also concentrates on throughput improvements to reduce space needs. Guaranteeing an optimal security for cruise passengers is equally perceived as a vital performance parameter for cruise ports.

The passenger experience is the second theme defining the performance of cruise ports. Variable such as time spent, flow during embarkation and disembarkation, absence of queues in procedures, spaciousness of the area, and the friendliness of the terminal produce positive assessments by the passengers. Disembarkation processing time (with customs and immigration) and minimum queue time at all functions is a key operational performance indicator from a port user perspective, whether cruise line or a single passenger. Passengers' assessments of the port experience stand as a performance indicator first because "word of mouth" and recommendations are key for generating interest in visiting specific cruise destinations<sup>27</sup> and, consequently influence cruise lines decisions on itinerary planning.



## 2.5 Cruise port competition

The growth of last years has led to the evolution of complex relationships between cruise ports. The major element is a key feature of the expansion of the sector, the fact that cruising develops on the basis of itineraries rather than destinations. There is an interdependent relationship between ports. Competition and cooperation simultaneously occur between two or more rival ports in a given market.

Ports compete with each other aiming at being included in the itineraries organised by the few or many brands deploying vessels in a specific cruise port region. Yet not all compete for the same prize. The development of distinctive market segments (i.e. contemporary, premium, luxury cruises) means that several ports are targeted either by choice or due to capacity and destination restrictions, a share of some of these segments rather than all. Contemporary cruises and luxury stand as the most popular market segments. The competition is more intense between ports of the same category. Cruise lines are interested in creating itineraries including ports of different sizes, as each type of port provides different kinds of experience, blending different types of attractiveness; and permitting future passengers to select among variable options for accessing their departing port. For example, competition develops between marquee ports aiming to be part of most itineraries possible, or between different destination ports. It also exists between small ports or between ports enabling the application of "drive-to-cruise" concepts. With the number of ports entering the market increasing, this competition is intensifying, thus the increase in market size sustains the levels of passenger movements.

In the case of home-ports, competition is even more intense than in the case of ports of call. In this case the geographical location of the competing ports tends to be of limited importance, or even almost irrelevant. Especially in the case of marquee ports, the geographical concern is more limited to the location of other ports available to confirm attractive itineraries, than the location of the home-port *per se*. For these, features and facilities of the cruise port and destination are most significant, as are the quality and variety offered by the existing chain of suppliers (i.e. bunkering, provisioning) having the capacity to serve home-porting calls.

While competing, cruise ports also develop cooperation practices as key strategy to develop their market position. The phenomenon is also observed in the cargo ports<sup>28</sup>, but in the case of cruising, ports do so to an extent that their relationship can be described as the perfect case of "coopetition". The latter refers to the aim of competing entities to generate a number of advantages and opportunities produced via active inter-organizational relationships<sup>29</sup>. The key concept is to collectively benefit from the growth of the cruise industry via networking and promotion of regions as a cruise destination, instead of individual ports. Recalling that the size of a market has rapidly expanded and changed in the last decade alone, sharing of knowledge on best practices on cruise ports development and management are also part of the observed cooperation of cruise ports.



### 3. Maximising Benefits and Reaching Potential

#### 3.1 Economic impact of cruising

Forecasts for cruise activities suggest that the uninterrupted growth of the last two decades will continue, with cruise line operators tapping into new markets and destinations, and more ports hosting increased passenger movements. The magnitude of the benefits produced by cruise activities provides incentives to communities hosting cruise calls, or start-ups, to seek the best ways to increase the size of the market share that visits the respective destinations. Despite any challenges, many cities are keen to develop cruise port activity, aspiring to foster local tourist industries as well.

##### *The positive impact of cruise shipping*

Cruise activities are an income generator for the industries that are directly involved in their provision. These are cruise lines, cruise ports, travel agents, and all those involved in the cruise supply chain and the related logistics. It is also an income generator for destinations, as shore excursions and daily staying of cruise passengers are associated with tourism related spending. Port-cities and related destinations enjoy benefits resulting from three major spending sources. These are cruise lines, passengers, and crew spending. The direct expenditures made by each of these sources are one of the different types of positive impact alone. An indirect impact is produced by an economy that supports cruising. In addition the direct expenditures act as multipliers for an economy, a re-expenditure producing induced impacts. The different types of the impact are commonly estimated in terms of direct expenditures, overall economic contribution, employment and income for employees, and taxes.

The global economic impact of the cruise industry for 2013 stands at USD 117.1 billion, while the cruise industry and its related activities maintains 891 000 jobs. In the same year, the impact of the cruise industry on the US economy accounted for USD 44 billion and 363 133 jobs, equal to USD 18.3 billion in wages<sup>30</sup>. For Europe alone, the economic impact of cruise activity on the European economy is estimated at EUR 39.4 billion, while the direct impact from cruise lines, the passengers and the crew accounted for EUR 16.2 billion. The cruise industry maintains 339 417 jobs in Europe<sup>31</sup>. This impact is mainly enjoyed by a number of marquee and other destinations that have for long been included in cruise line itineraries. The impact is spread through to more communities. With cruise lines seeking the expansion of the industry, smaller ships, and in some cases larger ones, are able to bring tourists to new ports which were previously inaccessible or off the beaten path.

The port-city is benefiting from the expenses of cruise passengers and crew members during their stay at the destination. These expenses are related with tourism, food and beverages, travel services, shopping, entrance to historical and cultural sightseeing etc. When the cruise port acts as a homeport the economic impact for the port-city is bigger. Cruise passengers stay more at the destination, either by early arrival or by extending their stay after the end of the cruise. This means additional spending, including benefits for the hotel industry that is not benefiting in case that the port is operating as transit port only. Finally, cruise sector expansion benefits the image of the destination, and increases the port-city reputation as a touristic destination. During a cruise, passengers have the opportunity to see several destinations and this experience is affecting their decision to return to some port-cities for vacations, of even as repeat cruisers.

According to cruise line statistics, in 2013 the economic impact created by cruise passengers and crew at the port cities worldwide accounted for USD 14 579 billion. The major spending categories were food and beverages, tours and local transit services, and retail expenses. For home-porting passengers the average spend per visit was USD 316.3 while for transit passengers the average spending was USD 92 per visit. The frequently overlooked crew spending was also considerable, standing on average at USD 56.7 per visit<sup>32</sup>.

Cruise lines benefit local communities via expenditures for the operation of the cruise ships. These expenditures include costs for bunkering, supplies, spare parts, lubricants, repairs as well as the crew related costs. A cruise operator might procure supplies for companies located in the port city, as well as for those services related with the facilitation of the cruise ship (i.e. shipping agents, shore excursions etc.). There are additional benefits produced by the operation of the cruise company. Indicatively these benefits include the operation of headquarters or local offices, the spending in advertising and promotion activities, and other business services. These benefits are not spread in all cruise destinations. In general, cruise companies tend to prefer major homeports in order to establish their headquarters, i.e. Miami is hosting the headquarters of some of the biggest cruise companies, whereas in Europe, such homeport cases include Genoa (Italy), Southampton (U.K.) and Hamburg (Germany).

Shipbuilding and the construction cost for new cruise ships is the activity where cruise spends the biggest amounts of all. In 2014, the economic impact derived from the building of new cruise ships reached USD 3.9 billion, where new buildings already ordered by CLIA members for 2015-2020 cost USD 25.65 billion<sup>33</sup>. As cruising is increasing its market share of tourism, and new capacity is added to the global cruise fleet, these types of economic impact are expected to increase further.

### ***The positive impact of cruise port development***

Cruise ports enjoy a share of the benefits that cruise shipping generates. They do so receiving significant revenues for hosting cruise calls and the respective passenger movements. In turn, port strategies to attract cruise lines provide a value added non-tangible benefit to the local community. This is the investment in the promotion of the destination to the cruise and tourism communities.

The major economic benefit for the port itself is the result of the dues paid for the cruise call and for the disembarking and embarking passengers. Typical fees collected from cruise ships are the entrance fees, normally calculated on the basis of the cruise ships gross register tonnage, and the berthing fees, normally calculated per day and per length meter of vessel. There are a number of other potentially applicable dues, an example being the pilot fees or the reception of on-board generated waste through a lump sum. These might also be calculated according to the vessel gross registered tonnage, or according to the use or not of the service, yet these might be collected for third parties providing services rather than the port itself. A cruise passenger fee is imposed for transit as well as homeport passengers, while in the latter case the fee is higher. Passengers (dis)embarkation is also subject to other fees such as the passenger security fee for the use of the provisions of the International Ship and Port Facility Security (ISPS) Code. This charge is usually a fixed rate per cruise passenger embarking, disembarking, or transiting through the cruise port.

Apart from the aforementioned charges there are also charges based on the provision of specific port services as for example, bunkering, provision of water and electricity to the cruise ship, provision of cruise ship supplies etc. Ports normally apply discount policies for cruise ships and passengers, as a promoting tool for attracting cruise traffic. These discounts are based on the number of passengers per year or the number of calls.

To reach an increased number of calls, and the subsequent direct economic benefits, cruise port develop marketing and promotional activities that are not limited to the promotion of the terminals, or other port infrastructure capacities. Cruise ports also promote port-cities and nearby cultural/tourist sites, in an attempt to generate passenger interest and influence the cruise lines' route schedules. Beyond marketing *per se*, cruise ports develop cluster activities aiming to coordinate operations and allow for uninterrupted processes; or collectively promote the destination with other stakeholders.

### 3.2 A public agenda for sustaining growth and maximising benefits

Combined with the described shapes of cruise shipping and cruise ports, the magnitude of the economic impact of cruising for hosting communities and its potential inform an evolving public agenda. Whereas this is an activity resulting in multiple forms of positive economic impact, it is also linked with a number of challenges. As any other international economic activity, cruise operations create footprints at local, national and international levels; the size of their positive impact is qualified by the condition applying, as does the magnitude of the externalities they produce.

A condition to enable local communities to extract the most benefits from the rapid cruise market growth is the definition and endorsement of the best practices and policy options at the disposal of cities, ports and related stakeholders in order to use cruise shipping for both revenues collection and urban economic development. It is also linked with the ability to mitigate in port-cities the externalities produced by cruise shipping, such as traffic or environmental ones. While these problems are normally of local concerns, an international cruise related agenda would help advancing meaningful proposals, but also minimize concerns of absence of a level playing field. The existing challenges to be addressed are of operational, social and environmental nature.

#### *Operational challenges*

Cruise ports and destinations aim to host an increased number of passengers. While the benefits, in term of spending at destinations are profound, this growth might be associated with congestion and related externalities. In small picturesque destinations cruise calls might mean the relatively unpleasant situations of a crowded location at certain days or hours, even distortion of other tourist activities. In bigger ports this might take the form of congestion at the time of arrival of bigger ships on which thousands of people are cruising. The arrival of two average size cruise vessels at a given port means more than 6 000 passengers disembarking at the same time. Hosted passengers might increase without an increase of the number of cruise calls. Yet, congestion in small and medium destinations is in some cases produced simply because of small additional number of calls. Without effective planning, during some days these destinations are subject to the pressure and the negative effect of too many passengers that can hardly be accommodated in a way allowing for a positive experience. The fact that in several cases the presence of cruises is marked by seasonality deteriorates the problem that smaller tourist attractive destinations face.

Relevant issues to be addressed include the availability of adequate infrastructure and the organisation of the terminal operations in an efficient way. They also include safety and security for passengers, crew and vessels. Beyond matters worth consideration in all ports, such as number of berths, water and sewage facilities, customs, agents, pilots, security and immigration processes, gangways usage etc., additional ones are present in the case of home-ports. Luggage handling, air-sea linkages, improved visa procedures and check-in processes that provide accessibility and convenience for those embarking and disembarking are some of the latter. The development of transport and tourism services, such as buses, taxis, drivers, guides and translators, are also critical. These concerns need to be addressed following a better understanding of the exact implications that the enduring

increase of the size and capacity of cruise vessels and the resulting scale of operations produce. Such discussion would help the understanding of operational, social and environmental limitations of the economies of scale, and any potential differentiation depending on specific variables.

The optimal planning of cruise ports and their terminals would enable the best operations possible. Inevitably this has brought in the agenda of cruise lines and port managers the issue of long-term arrangements. The parameters that would enable a location, or a port, to secure a long-term commitment of cruise lines that would provide the motive to proceed to product and process adjustments need to be defined. Destinations and ports seek ways to reach ways of collaboration with cruise lines towards this end and broader expertise on what needs to be done towards this direction is essential.

Berth allocation is another type of long-term planning by the ports, which cannot be efficiently implemented by one port alone. This practice refers to the advance planning of which cruise vessels will visit the given port a specific day for a specific timespan. Given the limitations imposed by the geographical distances between ports included in an itinerary and the lengths of cruises, the phenomenon of many operators having berthing requests for the same hours is not rare. The debate on berth allocation remains at the top of the agenda between the key stakeholders, in many respects however it is inconclusive. Technical issues of its application (time scale, details of the berthing allocation) but also issues of essence, such as the need of all ports included in an itinerary to synchronize with the system, the treatment of double bookings, and cancellations of booked cruise berths, are vital. With the number of players involved, this discussion can hardly be resolved at local or national level.

### *Stakeholders' coordination*

Resolving most of the above problems demands more than an agreement on some technical issues (i.e. berth allocation details). It also demands the development of two types of coordination. The first one is the coordination between cruise ports and cruise lines in order to synchronise the system at the port and the operations taking place at the port terminal. A number of complex challenges exist, insofar as the relations between cruise lines and ports are concerned (**Table 3.1**) and systematic action to successfully address them is subject to coordination. The second one is the coordination of tourist destinations, including local public authorities, museums, retailers and, foremost transport service providers (coaches, buses, taxis) and travel related industries, so as to create a pleasant experience for cruise passengers and smooth embarkation and disembarkation processes. Even port arrangements such as the berthing planning cannot be efficiently implemented if there are no means to involve other actors at the visited destination so as to orchestrate the entire cruise supply chain.

**Table 3.1 Key themes requesting cruise lines and ports coordination**

Conditions for long-term engagement	Shore excursions
Cooperation when scheduling/ planning itineraries	Land-side transportation (buses; taxis; coaches, etc.)
Port tariffs	Organization of cruise supply chain
Berth allocation	Environmental issues (Shore electricity supply)
Cancellation of calls	Improving the involvement of stakeholders (i.e. travel agents)
Other port services (pilotage mooring, waste reception etc.)	Operational coordination (visa procedures, luggage handling etc.)

The coordination of actors with the aim to efficiently integrate the cruise ship supply chain is an additional challenge for many cruise ports. Provisioning of vessels with supplies is an operation of substantial size. For some lines local provisioning of food, drink, and clean water is done in calling

ports, particularly for longer cruises, thus the choice of destinations might be affected by the presence of such capacity. A growing trend is to carry nearly all goods from the home-port, due to the concerns regarding food safety, and economies of scale at major ports. This means a challenge for smaller ports that would like to see the retaining or expansion of the respective local business. It also means a challenge of home-ports, or big ports, that feel the pressure of increased scale and concentration of such provisioning in fewer destinations. Policy practices (i.e. customs, hygiene controls etc.), that would facilitate cruise lines to provide to their passengers access to all they would prefer, is of importance and might affect the quantities purchased and the level of spending at certain destinations.

All the above types of coordination are beneficial in an additional respect. Given the low levels of penetration of cruise in various destinations, the coordinated efforts allow the industry to develop an attractive value proposition to broader populations. This would facilitate the expansion of the existing passenger source markets and potentially create new ones.

### *Interaction of destinations and passengers*

A key question refers to the forms of the interactions that hosting destinations develop with cruise passengers so as to secure an increased benefit for cruise destinations. These benefits do not result in direct spending alone. They also result in an improvement of the image of the destination with long-term benefits. From a non-monetary perspective, offering to multi-cultural cruise passenger groups an experience sharing the local culture, rather than simply copying and enforcing cruisers own home-town habits and preferences, or even offering a selection of which of two he would like to experience, is important. Cruise lines serving specific destinations benefit from improved passengers satisfaction rates, so they have all the potential to be involved in partnership with ports and other stakeholders to improve the attractiveness of the experiences of their passengers. Noting that the typical American cruise passenger will enjoy 3.8 cruises in his lifetime<sup>34</sup>, pursuing him to return is a competitive position-improving factor.

Both these interactions and the level of the economic impact created by a cruise are strongly related with the business strategy that the cruise operator has adopted. On the one hand, the development of partnerships with other players in the cruise industry, including local partnerships for handling shore side activities, increases the value added for a given destination. On the other hand, the on-going trend of vertical integration strategies allows cruise operators to self-handle shore excursions and other tourist services. The consequent offer of an all-inclusive type of services means that most of the revenues return to cruise operator. Then, cruise lines build even bigger cruise ships offering a variety of activities on-board for cruise passengers. These ships invite cruise passengers staying on-board even during cruise calls, or spending larger shares of their budget while at sea. The longer a cruise passenger spends on board a cruise ship, the bigger the revenue for the cruise line. Some estimates suggest that the cruise operators increasingly depend on on-board revenue to cover their operational costs (**Table 3.2**). Beyond this, cruise passengers frequently purchase shore excursions organized by the cruise company, and are hardly visible by the local communities.

The quality and variety of amenities that exist on younger cruise ships and the large-scale, new buildings have generated considerable scepticism as regards the sharing of the benefits that hosting destinations will enjoy in the future. While the concept that "the ship is the destination" is a perception rather than a fact, the implications of these trends deserve attention and, potentially, association with the level of cruise lines' established implantation in the destinations visited.

**Table 3.2: A financial breakdown of revenues and expenses of a typical cruiser**

Revenues			Expenses		
	US \$	%		US \$	%
<b>Ticket</b>	1,350	75.9	Agent commission	231	13.0
<b>On-board Spending</b>	429	24.1	Ship fuel costs	192	10.8
Casino & Bar	236	13.3	Corporate Operating Costs	206	11.6
Shore excursions (cruise line portion)	86	4.8	Payroll	196	11.0
Spa	43	2.4	Depreciation/Amortization	171	9.6
All other on-board spending	94	5.3	Victualing (food)	107	6.0
			On-board and other	78	4.4
			Other operating costs	258	14.5
			Other and transportation	59	3.3
			Interest Expense	55	3.1
<b>Total Passenger spending</b>	1,779		<b>Total Expenses</b>	1,553	
<b>Profit before taxes</b>	226	12.7			

**Note:** Worldwide, across all cruise lines

**Source:** Cruise Market Watch, [www.cruisemarketwatch.com/home/financial-breakdown-of-typical-cruiser](http://www.cruisemarketwatch.com/home/financial-breakdown-of-typical-cruiser)

### *Expanding capacity in line with local economic development strategies*

Securing most of the potential local gains via an expansion of the cruise activities requests a consensus of how this might be done and how it might be integrated with the local economic development strategies. Destinations and cruise ports have no unlimited spaces for the development of all different activities that they might wish to advance. There is frequently a restriction of space, either at the city or its waterfront, or at the port. The antagonism of different actors and industries to maintain or increase the shares of the space they use is not rare.

The development of cruise activities, or just cruise terminals might be associated with restrictions to residents' access at the waterfront. On the one hand, the growth of the industry is based on the modernization of existing infrastructures, but also on the presence of new facilities and the spatial expansion of the terminals and the cruise related activities. On the other hand, waterfront development is appreciated in many cases as the way to preserve alternative uses and respect traditions of the cities. Given this appreciation, citizens' objections to develop tourist activities or related infrastructures (parking slots, restricted access zones etc.) are not rare. The definition of the principles to be adopted and the parameters to be examined would secure a balanced approach.

The same stands true for port development. The limited port zone marks imply choices as regards a wide spectrum of activities that might develop. As multi-purpose terminals are no longer a viable option for the development of cruise activities, the growth of cruising may potentially engender interference with other maritime transport markets. Cargo ports also seek to spatially and functionally expand so as to improve the level of their own integration in supply chains. Stakeholders involved in these markets would like to see biggest parts of the port devoted to their activities, rather than the expansion of cruise ports. A balanced port planning needs to take into account contradicting potentials of different segments development. How this might be done is a question deserving attention.

Cruise terminal site location is the question that follows. Which site, in which way should be planned cannot be decided apart from broader destination or regional planning. When several potential port

sites can be considered, broader goals, such as spreading tourism to new areas, strengthening infrastructure, creating tourism routes, providing investment for key facilities, are all part of the equation. Plans for other sector development and for other forms of tourism create cumulative effects. The forms of involvement of stakeholders in location choice and, when essential, spatial and traffic planning, is increasingly important.

The planning of the port and the hosting of cruise activities does not, however, end at the gate of the terminal. The transfer of passengers from terminal to city and transport for shore excursions are conversely important. Efficient location choices are conditioned by the efficiency of private, or public, transport strategies (i.e. services provision to the terminal but also avoid interference with urban road traffic when a cruise call arrives or departs). Location choices depend on the connection capability of various tourism-related industries as well as the ongoing urban tourism strategies formulated by tourist organisations and other relevant decision-makers.

### *Addressing social challenges*

The expansion of cruise activities has not left unaffected the image of cruising. The elite activity of some passengers per year has been replaced by the mass transportation of thousands of cruise passengers at once. A community's decision to seek cruise ship visits requires a number of industries to be involved but will also affect many, either directly or not. Besides, cruise is not dissimilar with the impacts generated by any other tourism development on the milieu and services of visited communities and sites. It might displace current activities by other tourists or by local residents, causing changes in costs, access and variety. These changes can be positive or negative, i.e. overloading dock facilities or causing improved ones to be built; creating new services, or pricing the locals out of existing ones. The same change may be viewed as positive by those who benefit and negative by those who may not benefit. All these lead to societal approaches that conceive cruise growth being associated with the deterioration of the quality of life.

A marquee destination that has experienced the negative effect of such approaches is Venice. A ban on large cruise ships passing through the centre of Venice was imposed in late 2014, preventing all ships over 96 000 gross tons from sailing to the city's main cruise terminal, and limit the number of bigger ships over doing so to five per day. The debate had gained momentum as citizens and local protest groups, were discontent with the presence of the bigger vessels, arguing that they produce pollution and result in substantial levels of emissions, with the acid nature of the pollution thought to be potentially speeding up the erosion of the city's medieval buildings, which are already sinking into the lagoon surrounding Venice, itself a UNESCO heritage site. Even with environmental assessment pending, the image of giant vessels next to traditional buildings led to an overheated reaction by local communities. Italian authorities are discussing an overturn of the decision in early 2015, as the actual impact of cruising was better understood, and environmental friendly practices of cruise ship operators, i.e. the commitment to not using fuel with more than 0.1 per cent sulphur. Cruise liners anticipated implementations and limited number of big ships to Venice, and given the long-term nature of cruise lines planning (i.e. itineraries are decided two years in advance) the reverse of business decisions in the forthcoming future seems improbable.

Whether these are unsubstantiated or not, these are conceptions and perceptions that have to be addressed in order to achieve sustainable growth. Cruise is inextricably linked with the carrying capacity of a destination, a concept applicable in tourism development strategies. i.e. the ability of the destination to absorb tourism before negative impacts are felt from host country, or the maximum number of people who can use a site without causing unacceptable changes to physical environment or affect negatively the quality of visitors' experience. Of course, answering how many cruise passengers can be hosted or how many can be wanted are questions associated with several parameters (i.e. who

decides, which are the management objectives, which are the attributes and capabilities of the destination) all of them associated with what local communities perceive<sup>35</sup>.

The enhancement of community identity in the model of economic growth is in several cases important. The requirement for local communities to reach optimum levels of exploitation of traditions, or collectively make decisions concerning the abandonment of local practices so as to match the preferences of cruise passengers (i.e. the presence of malls and retail centres at specific locations may run counter to the traditions of small communities), demands inclusive consultation processes.

A related social challenge is worth to be noted. Cruising brings to a destination people of various nationalities and cultures, who may have different customs and behaviours than local residents. Cruise passengers might also be the source of noise and occupation of spaces (churches, restaurants, parks, beaches etc.), which were previously exclusively used by the local community. The host destination needs to be prepared to accommodate increased presence of tourists, while the latter adds to the pre-existing the need of practices that limit any xenophobic attitudes at the hosting communities.

### *Optimal entry in cruise terminal operations*

The intense use of public infrastructures to serve a growing demand and the changing size of cruise vessels result in the demand of new investments for cruise terminals. Securing funding for upgrading infrastructures is important. Issues of best use of public funds when available, or the principles of providing public funds so that they do not distort competition, are of primary importance. In Europe, beyond ports themselves, or private actors, the states or the European Union institutions might provide funds for to develop the basic infrastructure. What constitutes the latter is under debate at international level, as is the whole issue of state aid provision to port infrastructure development, in particular the suitable level of discussion and best practices and their implementation.

Cruise lines, and most recently global cruise terminal operators, develop a major interest in assuming responsibility of cruise ports operation, with the type of involvement based on local peculiarities. In the dynamic industry there have been phases of development. The first phase took place in the 1990s, with the first cruise terminals. In this period cruise lines were acting most advisors. In the 2000s several ports developed different development, and berthing police, with cruise lines acting as collaborators. The third phase in the 2010s cruise lines act also as investors in cruise terminals. Concessions of rights to operate, and occasionally to build and operate cruise terminals, are preferred in Europe. The Caribbean offers opportunities for investments in developing private islands and for expanding to development of cruise related activities such as shopping malls and other retail shopping entertainment. This trend implies a high level of dependency on cruise lines.

Cruise lines commitment to port investments needs to be in line not only with the port but also with the city. A gigantic investment has sense when it brings wealth to the destination community, by creating jobs and business and not interfering in the well-being of the citizens. Cruise lines and destinations have to work together to maximize the benefit of the cruise tourism. Cities managers should know that the cruise tourism has its own idiosyncrasy, different from other kind of tourism, and then define adequate policies with a dedicated approach. On the other hand ports and destinations must be very careful when considering investments, not least because of the level of the cost of developing brand new dedicated cruise port infrastructure (pier, breakwaters, etc.) projects that are difficult to recover.

The advancement of conditions (contractual or else) that increase local/regional attachment and embedded ness, and minimize the dependence on external control by foreign actors – who extract a



large share of the economic rent produced by ports and who are guided by the aim of creating shareholder value – is more than relevant. With the economic effects of any port activities being no limited to the local environment, but spreading over a much wider geographical area and among a large number of international players, port authorities and regional/national governments are challenged to ensure that the broader region gets a fair share of the economic rent created. This is needed as a large part of the population takes ports for granted and community groups typically argue that there is an imbalance at the sharing of the benefits for the local community of having larger and larger ports. This viewpoint is a breeding ground for socioeconomic confrontations related to cruise port development. Overlooking a consensus of the conditions to enhance regional implantation and of a fair return to the local/regional community may jeopardize a cruise port's future development and its societal "licence to operate".

### *Application of innovative technologies*

Continuous improvements in the port and its associations with hinterlands are subject to the application of innovative technologies. The latter are also increasingly vital for optimum cruise services offering. Infrastructures, such as mobile gangways and the innovative application of existing technologies so as to further lower the environmental impacts of a growing economic activity might provide competitive edge to a particular port or destination.

The development of smart, technologically advanced, cruise ships might be a game changer. On the one hand, key innovations, such as the online check-in are already applied in specific cases. On the other hand, a wide spectrum of applications that would advance further smart operations, i.e. practical information, on-board entertainment, luggage tracking, tour transfers, last minute shore excursions offers or handling support systems, deserve investments, technological advancements and innovative applications of any technological advancements. Providing smart experiences and taking advancement of technological adaptations cruises broaden the target groups and increase passenger numbers.

The path towards innovation and digitalisation for the cruise, sector, includes stakeholders cooperation, skills training development, research based policy decisions and promotion of innovative information and communication technologies.

### **3.3 Limitation of environmental externalities**

In recent times the environmental impacts generated from port and maritime operations have received attention. Ports in particular are economically, socially, culturally and administratively complex organizations considered as the source of multiple environmental, economic and social impacts<sup>36</sup>. The emerging question is how cruise shipping, ports and the related economic chain can operate efficiently, within a socially responsible and acceptable framework. The various environmental externalities refer to the handling of waste produced, water quality, air emissions, noise, and soil, whereas other issues (i.e. constructions that alters natural or build environment, fauna, energy resources, etc.) are also part of the relevant agendas.

Addressing two key externalities produced by the provision of cruise shipping and the hosting of vessels and cruise passengers at cruise ports stand today as priorities. The same externalities are illustrative of the need for discussion and conclusions on measures to take place at international level. These externalities are waste management, and the various forms of emissions, including air and noise emissions, respectively.

### ***Waste reception***

A key issue on the relation of cruising and the environment is the development of effective policies and practices for the collection and handling of the on-board produced waste and garbage. The amount and types of waste might vary from one cruise ship to another, yet cruises are generators of the highest amount of garbage. A cruise ship with 3 000 passengers and crew generates about 50 tonnes of solid waste in a single week. An average cruise passenger generates a minimum of one kilogram of solid waste plus two bottles and two cans per day and an average of 50 tonnes of sewage (black water) per day. As cruise activities grow, the size of the waste produced during every single cruise is such that cannot be ignored.

An international policy agenda has already developed referring to the availability and adequacy of port reception facilities of ship-generated waste and cargo residues. Together with the establishment of systems that provide incentives for ships to use, these facilities contribute to a reduction of ships' discharges into the sea. Relevant provisions have been adopted in the Annex V and VI of International Convention for the Prevention of Pollution from Ships (MARPOL). These define which wastes can be discharged into the sea and imposes obligations to provide facilities for the reception of ship-generated residues and garbage. The EU has followed with a regional piece of legislation addressing the legal, financial and practical responsibilities of the different operators involved<sup>37</sup>.

Most cruise lines and port authorities have implemented environmental management systems in order to ensure improved operations. Cruise lines have put efforts into reducing, selecting, and managing the garbage generated on-board, in compliance to the MARPOL requirements. An environmental policy goal of "zero discharge" for solid waste at sea has been endorsed by several of them. Similarly, cruise ports have implemented solid waste management processes. They developed facilities, technologies and services aiming to allow continuity to a cruise ship's garbage life cycle in a more efficient way. Today, port reception facilities are generally available and the volumes of waste delivered, comparing to that discharged at sea, have increased.

A major concern for cruise operators, ports and third parties involved, is how to further improve the existing processes in place. A related one is the development of efficient information and monitoring systems allowing for the best use of the mechanisms present. Reducing solid waste and increasing recycling via availability of garbage reception facilities at all berths, 24 hours, seven days per week, demands stakeholders cooperation for a better management of the ship generated waste and, not least, the application of innovative technologies. Both cruise lines and ports need to adjust. Cruise lines need to demonstrate the willingness to bear a significant part of the cost and thus support the cost recovery systems in order to encourage the delivery of waste on land. The latter might comprise by a built-in, fixed element and, possibly, by a variable element according to the amount and type of waste actually delivered. Cruise ports need to advance handling services such as segregation, biological reprocessing, inactivation and composting, recycling and storage. Together, these actors can explore the possibilities of waste treatment on ships via investment in advancing innovative new technologies. These efforts could decrease the large disparity between waste management ashore and disposal services at destination. Improving IMO relevant legislation in order to match industrial practices and the potential of technological advancements are also themes to be tackled via an international agenda.

Improving waste water treatment capacities is another process of importance. In this case the IMO has already designated "special areas" for passenger ships (i.e. the Baltic Sea) where the discharge of sewage from a cruise ship will be prohibited, through a gradual process ending not later than 2018. Stakeholders need to undertake initiatives in order to ensure that facilities for the reception of sewage are provided in ports and terminals where coastal countries shall report that the sewage reception facilities in their ports fulfil the criteria of adequacy.

### *Air emissions*

Port and shipping related emissions have attracted the vast interest of decision makers and port-cities that experience the negative externalities of port and port-related operations. Without countermeasures, emissions of sulphur oxide (SO<sub>x</sub>) and nitrogen oxide (NO<sub>x</sub>) of the shipping industry would exceed all other emission sources in transport and result in bad air quality in ports and their surroundings. When emissions from shipping represent up to 50% of local emissions, the use of technology that already exists would decrease these emissions by a notable level. Cruise shipping is a relatively large emitter, due to large hoteling load. Even though the average emissions in port account are comparatively low<sup>38</sup>, the fact cruise terminals are often close to city centres means that the exposure of population might be on the higher side.

The need to control emissions has already led to regulatory frameworks restring the use of particular fuelling options. The International Maritime Organization's MARPOL Annex VI places a cap on sulphur within special areas (Emission Controlled Areas - ECAs). For example in SECA (sulphur emission controlled area) in the North and Baltic Sea area the mass fraction of sulphur in bunker has to be less than 1% since 2010 and this took effect in North America in 2012. This limit will be further decreased to less than 0.1% after 2015. The worldwide sulphur is limited to 3.5% in bunker with this limit to decrease to 0.5% after 2020.

These rules triggered the interest in alternative forms of powering cruise vessels. There is a considerable attention at ports worldwide in using on-shore power supplies (cold ironing) and other similar technologies and practices (use of diesel oil instead of heavy fuel oil, use of renewable energy sources, etc.) in order to reduce emissions. In Europe, the 2012 adopted fuel sulphur EU directive has produced interest for alternatives on-shore power provision. At the centre of it are solutions such as the liquefied natural gas (LNG) provision. Future technologies, such as wind and solar power, are also options under consideration. The application of measures to reduce emissions, including onshore power for cruise ships, remains subject to regional variations, e.g. being more developed in North America than in Europe (**Table 3.3**).

**Table 3.3: Current Practices for reducing emissions in North America and Europe**

Instrument	North America	Europe
<b>1. Information</b>		
Inventories	Los Angeles- Long Beach; Seattle; New York and New Jersey	Venice, Barcelona
<b>2. Incentives</b>		
Vessel speed	Los Angeles- Long Beach; San Diego	-
Fuel switch	Seattle, Vancouver, New York and New Jersey, Houston	Gothenburg
Green ships	Vancouver (Environmental Shipping Index)	10 EU ports (Environmental Shipping Index), tariffs (Sweden)
<b>3. Infrastructure</b>		
OPS	Los Angeles, Seattle, Vancouver, Juneau, San Francisco, San Diego, Halifax	-
LNG bunkering	-	Antwerp, Rotterdam, Amsterdam, Zeebrugge, Stockholm
<b>4. Regulation</b>		
Fuel content	Emission Controlled Areas	Emission Controlled Areas, EU Sulphur Directive
OPS	California	EU from 2025

Source: Merk (2015).

### **Noise emissions**

There are different noise sources on ships during their dockage at ports, classified as diesel generator engine exhaust, ventilation inlets/outlets and secondary noise sources, e.g. pumps or reefers. Cruise ships operations generate disturbing noise for nearby areas and the crew, whereas they are also a source of low frequency noises. The IMO has already defined a Code “on noise levels on board ships” detailing limits for the different types of noise, setting limits of the noise that is emitted into the surroundings. However, the existing international framework covers only the noise on board ships but not in a port or during manoeuvring. While the latter activities are in some countries subject of additional regulations, an international discussion for global rules would facilitate an effective and sustaining answer on the limits of noise emissions produced by cruise vessels at the port.

### **3.4 What type of action might an international public agenda imply?**

The cruise industry has for long demonstrated a remarkable capacity to seize opportunities for growth and develop beyond expectations. The extensive list of adjustments described has the potential to facilitate further and sustainable growth and limit the externalities produced by cruise. The commonality of the problems that cruise lines, cruise ports and hosting destinations need to tackle, the international dimension of several of the issues in question, and the on-going globalisation of cruising, indicate that efficient and effective answers might develop at broader international levels rather than via local efforts.

Generally cruise growth is linked with the advancement of coordination between all relevant stakeholders. With local conditions and principles of engagement in cruise differing, an international agenda could act as a facilitator for stakeholders to develop a common understanding, to benchmark existing practices, to promote specific solutions, and to define principles of actions.

Economic related challenges refer to business models definitions and the endorsement of the best practices, rather than to the necessity, or the potential, of regulatory intervention. Thus, meeting the challenges at international level does not necessarily imply the endorsement of economic and environmental regulatory initiatives. Nor does it imply the *a priori* absence of any such initiatives. Distinctive approaches might be endorsed in an attempt to address each of these challenges separately. With this sector marked for long by successful and admirable adjustments, the presence of regulations deserves further foundation before any initiative is endorsed.

Besides, the requirements, but also the maturity of cruise markets in different regions of the world, are diverse. Destinations, waterfronts, and social acceptability of cruise growth, are rarely similar. Seasonality results in different situations in the case of ports and destinations hosting cruises only some months of the year, comparing to those serving year round cruises. Technical characteristics and, not least, the different hosting capacities of destinations and size of port-cities (i.e. cruise port cities in Europe are remarkably smaller comparing to the North American ones) underline difficulties of uniformity, while they generate grounds for sharing successful practices. The variable distances between cruise ports in a given region, and the types of competition that these distances induce, might result in variations of stakeholder strategies. Destinations have their own dynamics and cruise ports are diverse in the many respects that have been already been described. In line with the truism that "each port is unique", state legislation and incentives provided for the development of cruise activities also differ, making the acceptance of similar practices and policies even more difficult.

In this context, stakeholders seek to enact practices satisfying economic demands and reducing costs and risks, aiming to enable sustainable development, in compliance with legislation. The scope for international exchanges and resolutions is hinted in the formats of interest representation and associability that are observed. Cruise Lines International Association (CLIA) integrated in 2013 regional branches so that the industry speaks with one voice. Ports in the Caribbean have formed their own regional association, whereas in north and south Europe cruise ports are organised in respective associations (i.e. MedCruise, Cruise Europe, Cruise Baltic) and collaborate at a pan-European network aiming to identify common stances on issues of interest. European institutions have also expressed an interest to encourage the involvement of stakeholders in promoting an integrated approach between cruise shipping, ports and coastal tourism stakeholders for cruise tourism at local, regional, national and European level, and in the decision making process.

In the cases of environmental challenges, international regulations are highly appropriate when a legislative approach is found wanted. The most appropriate way to deal with environmental externalities in a uniform way, hence securing a level playing field for the entire cruise industry, is the endorsement of international policy instruments. In the major parts of the market (i.e. North America, European level) legislation is already endorsed as the main driver of needs for environmental management tools. In emerging areas, such as Asia, environmental considerations remain for the moment of secondary importance. Beyond legislation, agreements on associated issues - such as the presence of remote monitoring systems as tools for improving the level cruise and port environmental conditions - which request complex and expensive processes are better assessed at international level rather than being causes of distorting competition

This said, the industry has put in place a number of self-regulatory practices that have secured growth but also an operating framework of remarkable records. Even on the environmental front, self-regulation at international level is not rare. Cruise companies spend heavily to install exhaust gas cleaning technology (scrubbers) to reduce air emissions from cruise ships. Receiving support from governmental organisations (i.e. Carnival has established links with the US Coast Guard and Transport Canada on this issue, while RCCL is developing similar initiatives) and discussing would help the development and implementation of environmental technology in order to comply with existing regulation or even pre-empt future ones. Cooperation aiming to advance innovation and alternative approaches at international level would also facilitate adjustments and solutions meeting the challenges related to shore power for cruise ships. Incentives referring to fuel switch and the construction of greener ships are worth to be examined internationally given that reference is on mobile assets that need to compete on a level playing field. In a similar way, meaningful international cruise emissions inventories would provide information on a number of unknown factors, such as the precise emissions of ships while docked comparing when they are on the sea, or the comparison with emissions from other shipping sectors. All these would inform adjustments of the related regulatory frameworks.

Environmental externalities have been the theme of initiatives collectively developed by the port industry within respective port associations. Individual ports make use of environmental management systems in accordance with ISO14001 along with other practices and tools available to manage environmental issues. Incentive pricing is also applied as a mean to address environmental challenges. Ships producing reduced quantities of ship-generated waste are subject of lower dues, as discounts are offered on the basis of green award certificates or on the basis of an environmental ship index. Yet even in this case the presence of common principles would facilitate the identification of such ships, while it would limit questions on the effectiveness of the tools in application and not least the potential of cross-subsidization between ship types depending on the markets served.

Other issues in the environmental agenda also call for an international approach. Ship recycling that affects the disposing of cruise ships is illustrative. Whereas the IMO Hong Kong International Convention for the Safe and Environmentally Sound Recycling of Ships (subject to ratification since 2009) provides its own details, regional (i.e. European) authorities have recently developed their own regulatory regime. Once the former is ratified, it will create a dualism that would be avoided only if the applied cruise ship recycling regime is harmonized at international level.

Overall environmental issues with reference to shipping and those with reference to ports are strongly interconnected. Thus the tools, measures, and policies to combat the externalities caused by these two industries require a holistic study and approach developed internationally. Reports, studies and essential inventories of measures for internalizing external costs are another field, beyond regulations that the international level discussions might advance facilitating growth of cruise activities.

### 3.5 Concluding remarks

This report detailed the structures of modern cruise shipping and reviewed the major challenges that need to be addressed in order to enhance the continuation and sustainability of the uninterrupted growth that the industry experienced during the last decades. This study has developed with the aim to provide a background analysis for an international public debate on how best to facilitate the continuation of the growth of cruise activities around the globe.

The examination of the structures of cruise shipping revealed that the uninterrupted evolution of cruise activities has developed hand-in-hand with the globalisation of the industry and the exploitation of new market opportunities by a rather small number of brands, belonging to an even smaller number of corporations. Capacity growth has been based on the presence of economies of scale, but also on market segmentation. The former multiply amenities on board, the latter matches distinctive demand characteristics. In combination they offer passengers a product variety that increase the number of cruise passengers per year. Similar is the effect of dynamic itinerary building so as to increase choices offered. Despite the globalisation trends, Caribbean and the Mediterranean sustain as the two major regions, and new ones, i.e. Asia, are developing. The passenger source markets are also limited and population penetration in these ones remains low. The potential of exploring more markets, and increase the number of passenger source markets, along with the confirmed fleet renewal trend, establish the foundations for further growth.

The analysis of cruise ports characteristics suggests that this industry has also experienced structural changes aiming to an effective adaptation to the requests of the demand. With the number of passengers expanding, cruise ports grew in size and expanded in terms of facilities and services offered. The development of specialized terminals and locations has replaced casual use of multi-purpose docks. New forms of investment facilitate ports to cope with seasonality, specialization. Meanwhile, a dynamic environment of cruise port competition has produced short and long term shifts of market shares. More ports target their inclusion in cruise itineraries, while others attempt to benefit by developing home-porting activities. Cruise port governance structures have changed, with the targets being to develop relations with private actors, to orchestrate the coordination of ports and cruise lines, destinations and other stakeholders, and to improve performance.

The above adjustments and strategies are inextricably linked with the magnitude of the economic impact of cruise shipping. As more and more passengers enjoy the pleasure of cruising around the globe, ports and destinations enjoy direct, indirect, and induced positive economic impacts. Port-cities, destinations and stakeholders have all justifiable reasons to explore strategies to increase their share in

hosting passengers and cruise ships calls. When conditions enable it, cruise ports seek to increase returns by hosting home-porting activities.

A condition to enable local communities to extract the most benefits from the rapid cruise market growth is the definition and endorsement of the best practices and policy options at the disposal of cities, ports and related stakeholders in order to use cruise shipping for both revenues collection and sustainable economic development. The report detailed the various types of key challenges conditioning the growth of cruise activities. It also detailed the key externalities that are accompanying this growth.

An international cruise related public discussion would help advancing meaningful proposals for market expansion. The report provides a provisional agenda, as well as background information of observed structures and trends. The dialogue between stakeholders and policy makers, studies, inventories, and consultation can now detail realistic proposals and principles for developing actions at local or international level, and inform efficient and effective initiatives in order to address operational, social and environmental challenges and facilitate the continuation of cruise activities growth.

## Bibliography

- AAPA (2015a), *North American Cruise Traffic 2013-2014*, Alexandria, Virginia: AAPA.
- AAPA (2015b), *Caribbean Port Cruise Traffic 2013-2014*, Alexandria, Virginia: AAPA.
- Ajamil, L. (2010), Setting passenger handling standards, Presentation at the 37th MedCruise General Assembly, Cannes, France.
- Bengtsson, M. and S. Kock (2000), "Coopetition" in business networks – to cooperate and compete simultaneously, *Industrial Marketing Management*, 29 (5), 411-426.
- BREA (2014), "The global economic contribution of cruise tourism 2013", Study prepared for Cruise Lines International Association, September 2014, USA.
- CHART (2014), "Asia Cruise Trends 2014: Analysis, Assessment, Appreciation", November, for CLIA Southeast Asia.
- CLIA Europe (2014), "The Contribution of Cruise Tourism to the Economies of Europe, 2014 Edition", Brussels: CLIA Europe.
- CLIA (2014), "The Global Economic Contribution of Cruise Tourism 2013", September 2014, Washington DC: CLIA Europe.
- CLIA (2015), "State of the Cruise Industry Report", Washington DC: CLIA Europe.
- Cruise Business Review* (2015), Issue 1/2015, Cruise Media Ltd.
- Cruise Industry News* (2014). "2014-2015 Cruise Industry News Annual Report".
- Cruise Industry News* (2015). "2015-2016 Cruise Industry News Annual Report".
- Kushuma, C. (2015), "Travel Agents' Perspective", AAPA Seminar, February 10, Fort Lauderdale, FL.
- Lekakou, M.B., A.A. Pallis and G.K. Vaggelas (2009), "Which home-port in Europe?: The cruise industry's selection criteria", *Tourismos*, 4 (4), pp. 215-240.
- MedCruise (2015), "Cruise Activities in MedCruise Ports: Statistics 2014", March 2015, Piraeus: MedCruise.
- Mintel Academic, (2013), Leading Companies. <http://academic.mintel.com.ezproxy.bu.edu/display/683136>.
- Odo Maritime Research (2014), "Global Ocean Cruise Market Analysis and Forecast 2014", June.
- OECD (2014), *The Competitiveness of Global Port-Cities*, OECD Publishing.



- Pallis, A.A. and K.P. Arapi (2015), Cruise Port Market dynamics: The Mediterranean and its multi-port cruise regions, Proceedings of the IAME 2015 Annual Conference, Kuala Lumpur, Malaysia, August.
- Peisley, T. (2012), "Cruising Through the Perfect Storm: Will Draconian New Fuel Regulations in 2015 Change the Cruise Industry's Business Model Forever?", Colchester: Seatrade Communications Ltd.
- Peisley, T. (2014), *End of the Beginning for Cruising*, Colchester: Seatrade Communications Ltd.
- Peisley, T. (2003), "Cruising: A global view of the challenge and the opportunity", Paper presented at the International Association Cities and Ports Days, Le Port, La Réunion, 19-22 November.
- Policy Research Corporation (2013), "Benchmark of Mediterranean Cruise Ports".
- Rodrigue, J.-P. (2015), *The Geography of Transport Systems*. E-edition available at: <http://people.hofstra.edu/geotrans>.
- Rodrigue, J.-P. and T. Notteboom (2012), "The geography of cruise shipping: itineraries, capacity deployment and ports of call", in: *Proceedings of IAME 2012 Conference*, Taiwan.
- Rodrigue, J.-P. and T. Notteboom (2013), The Geography of Cruises: Itineraries, not Destinations. *Applied Geography*, 38, 31-42.
- Satta, G., F. Parola, L. Penco and L. Persico (2014), Word of mouth and satisfaction in cruise port destinations, *Tourism Geographies*, DOI: 10.1080/14616688.2014.938689.
- Slack, B. (2007), The Terminalisation of Seaports, in: J. Wang, D. Olivier, T. Notteboom and B. Slack (eds.), *Ports, Cities, and Global Supply Chains*, Aldershot: Ashgate, pp. 41-50.
- Song, D.-W. and E.-S. Lee (2012), "Coopetitive" networks, knowledge acquisition and maritime logistics value, *International Journal of Logistics Research and Applications*, 15(1), 15-35.
- Stefanidaki, E. and M. Lekakou (2014), Cruise carrying capacity: a conceptual approach. *Research in Transportation Business & Management*, 13, 43-52.
- UNWTO (2014), *Tourism Highlights*, 2014 Edition.
- Wild, G.P. (1994), *The Cruise Market*, London: Lloyd's of London Press.

#### Websites:

Cruise Market Watch, [www.cruisemarketwatch.com](http://www.cruisemarketwatch.com)

Florida-Caribbean Cruise Association, [www.f-cca.com](http://www.f-cca.com)

Seatrade Insider, [www.seatrade-insider.com](http://www.seatrade-insider.com)

Cruise Line websites:

[www.aida.de](http://www.aida.de), [www.azamarclubcruises.com](http://www.azamarclubcruises.com), [www.carnival.com](http://www.carnival.com), [www.celebritycruises.com](http://www.celebritycruises.com),  
[www.costacrociere.it](http://www.costacrociere.it), [www.costacruises.com](http://www.costacruises.com), [www.cdfcroisieresdefrance.com](http://www.cdfcroisieresdefrance.com),  
[www.crystalcruises.com](http://www.crystalcruises.com), [www.cunard.com](http://www.cunard.com), [www.disneycruise.com](http://www.disneycruise.com),  
[www.fredolsencruises.co.uk](http://www.fredolsencruises.co.uk), [www.hlkf.de](http://www.hlkf.de), [www.hollandamerica.com](http://www.hollandamerica.com), [www.hurtigruten.us](http://www.hurtigruten.us),  
[www.thomson.co.uk/cruises](http://www.thomson.co.uk/cruises), [www.celestialcruises.com](http://www.celestialcruises.com), [www.msccruisesusa.com](http://www.msccruisesusa.com),  
[www.ncl.com](http://www.ncl.com), [www.oceaniacruises.com](http://www.oceaniacruises.com), [www.pocruises.com](http://www.pocruises.com), [www.princess.com](http://www.princess.com),  
[www.pullmanturcruises.com](http://www.pullmanturcruises.com), [www.rssc.com](http://www.rssc.com), [www.royalcaribbean.com](http://www.royalcaribbean.com), [www.seabourn.com](http://www.seabourn.com),  
[www.SeaDream.com](http://www.SeaDream.com), [www.silversea.com](http://www.silversea.com), [www.swanhellenic.com](http://www.swanhellenic.com), [www.thomson.co.uk/cruises](http://www.thomson.co.uk/cruises),  
[www.tuicruises.com](http://www.tuicruises.com), [www.voyagesofdiscovery.com](http://www.voyagesofdiscovery.com), [www.voyagestoantiquity.com](http://www.voyagestoantiquity.com),  
[www.windstarcruises.com](http://www.windstarcruises.com)

**International Transport Forum**

2 rue André Pascal

75775 Paris Cedex 16

[itf.contact@oecd.org](mailto:itf.contact@oecd.org)

[www.internationaltransportforum.org](http://www.internationaltransportforum.org)

