

MEDCRUISE NEWS

March 2012 | Issue 35

IN THIS ISSUE

Association News/People 1-3

MEDCRUISE ELECTS NEW PRESIDENT AND BOARD OF DIRECTORS 1
 39TH MEDCRUISE GENERAL ASSEMBLY 2
 MEDCRUISE AT THE SEATRADE WINTER CRUISING FORUM, ISTANBUL 3

Port facilities & Infrastructure 4-13

BALEARICS	4
THE AZORES	4
MOTRIL-GRANADA	4
ALMERIA	4
CARTAGENA	5
FRENCH RIVIERA	5
SIBENIK	5
LIVORNO	5
TOULON	6
SOCHI	6
VENICE	6
SOUDA/CHANIA	7
RAVENNA	7
DUBROVNIK	7
GIBRALTAR	8
LEMESOS/LARNAKA	8
GENOA	8
KUSADASI/BODRUM/ANTALYA	8
BARCELONA	9
VALENCIA	9
CEUTA	9
BATUMI	9
SINOP	10
TRIESTE	10
RIJEKA	10
SETE	10
MARSEILLE	11
MESSINA	11
LISBON	11
PIRAEUS	12
ODESSA	12
PORTOFERRAIO	12
HERAKLION	13
VALLETTA	13
MALAGA	13

Itineraries / deployment 14-15

ROYAL PRESENCE IN THE MED	14
HOLLAND AMERICA LINE'S MAGNIFICENT SEVEN	14
CMV'S DUO CALLS THE ATLANTIC ISLANDS	14
MSC DIVINA ARRIVING IN MAY	14
SILVERSEA'S 'SLOW FOOD ADVENTURE'	15
DISNEY RETURNING TO THE MED IN 2013	15
CRYSTAL ADDS MORE IN-PORT OVERNIGHTS	15
MORE EAST MED FOR LOUIS	15

Association News/People 16

MARIA DE LARRATEA APPOINTED SECRETARY GENERAL, MEDCRUISE	16
GIBRALTAR'S NEW CAPTAIN OF THE PORT	16
PROFESSIONAL DEVELOPMENT COURSE	16



THE ASSOCIATION OF MEDITERRANEAN CRUISE PORTS

BRINGING THE MED TOGETHER



Left to right: Yuriy Vaskov, Marijan Petkovic, Livio Ungaro, Bojan Babic, Kristijan Pavic, Lotfi El Ajmi, Stavros Hatzakos, Carla Salvadó, María Cano, Bruno Freitas (since replaced by Alexandra Mendonca), Figen Ayan and Giampiero Costagli.

MedCruise elects new President and Board of Directors

Stavros Hatzakos was elected president of the Association of Mediterranean Cruise Ports (MedCruise) on October 14th, 2011 at the 39th MedCruise General Assembly in Sète, France. Hatzakos, elected to a three-year term, is general manager of Piraeus Port Authority, one of the founding members of MedCruise, and acted as vice president of the Association in the past.

The MedCruise assembly also elected the ports that will serve on its new Board of Directors.

Odessa, Ukraine, represented by Yuriy Vaskov, was elected senior vice president and Koper, Slovenia, represented by Bojan Babic, was elected vice president. Ten other ports were voted to the Board of Directors.



Outgoing president Giovanni Spadoni welcomes his successor Stavros Hatzakos

The full board, with representatives and responsibilities are as follows:

- President: Stavros Hatzakos (Piraeus, Greece)
- Senior Vice President: Yuriy Vaskov (Odessa, Ukraine) Black Sea
- Vice President: Bojan Babic (Koper, Slovenia) Benchmarking
- Director: Figen Ayan (Kusadasi /Bodrum/Antalya, Turkey) Economic Studies
- Director: Maria Cano (Palamos, Spain) Professional Development
- Director: Giampiero Costagli

(Portoferraio, Italy) Communication/Press

- Director: Lotfi El Ajmi (Tunisian Ports) Events/North Africa Relations
- Director: Lorenzo Forcieri (La Spezia, Italy) Membership
- Director: Alexandra Mendonca (Madeira Ports) Security/EU Relations
- Director: Kristijan Pavic (Dubrovnik, Croatia) Finance/Website
- Director: Marijan Petkovic (Sibenik, Croatia) Statistics
- Director: Carla Salvado (Barcelona, Spain) Promotional/External
- Director: Livio Ungaro (Trieste, Italy) Environment

39th MedCruise General Assembly - October 2011



Cruise lines warn of industry slow down

Executives from the cruise lines set a sombre tone at the MedCruise General Assembly in Seté, with a warning that the trend towards slow steaming would impact ports in the region.

Although the Med contains a large number of UNESCO World Heritage Sites, located at ports in close proximity to each other – offering greater choice with itinerary planning – there remain logistical constraints for port calls.

'In the short term Mediterranean ports are going to face a year or two of pain since most cruise lines are operating a call or two less on average as we slow down our ships... and operate itineraries that give us greater control of operating costs,' said Nigel Lingard, marketing director for Fred Olsen at the time. 'We've cut operating speed from 17.5 knots to 16.5 knots and this reduces the distance covered each night by 20-30 miles'.

However, the greater number of cruise vessels in the area as the result of higher fuel costs for Caribbean fly-cruise packages – would push cruise lines to diversify on their itineraries, particularly to appeal to repeat cruisers, Lingard added.

Factors that may court favour are MedCruise's benchmarking and berth booking systems, which were welcomed by executives including V Ships' Roberto Giorgi, who praised them for increasing transparency.

He also called for investments such as cold ironing facilities and robust implementation of the ISPS code. Pullmantur, vp for land operations, Eduardo Lopez-Puertas also echoed the sentiment, asking for prevention of non-authorized tour operators near gangway – which in addition to breaking the ISPS code also affects line revenue.

By contrast, Star Clippers, owner and

president, Mikael Krafft warned that there still needs to be flexibility with implementation of regulation to cater to niche luxury cruise ships that are not large cruise ships but face the same ISPS restrictions – thereby affecting passenger enjoyment.

Vasilios Gazekas, Louis Cruises general manager, warned that when choosing itineraries lines pay close attention to factors such as financial and political instability, seasonality of a destination, co-operation between port and city, unrest and piracy, security in the city and, of course, expensive port tariffs. The latter was a point also emphasised by Francisco Reddel, Royal Caribbean Cruises, manager port operations Mediterranean and Middle East, who warned against port costs going up without an appropriate increase in value to the cruise line.

Sete social scene: The port of Sete greeted MedCruise members with open arms, hosting a number of social events including welcome cocktails at Fabre Museum, a Gala Dinner at Valmagne Abbey and an oyster tasting expedition to Thau Lagoon. Pictured at Valmagne Abbey are L-R: Delphine Beudin (Toulon), Carla Salvado (Barcelona) and Antonio Giorgio Matta

planning and ops. director at V.Ships; Sebastian Camps (Malaga) and Luis Monteiro (Portimao) (below) share pre-dinner drinks; (right) Star Clipper's Mikael Krafft examines a line of oysters. Bottom right: Stavros Hatzakos thanks the hosts - Port of Sete's Marc Chevallier and Catherine Lafon and Frederic Ledent (Sud de France Languedoc-Roussillon)



MedCruise at the Seatrade Winter Cruising Forum, Istanbul, December 2011

Winter cruising in the Med came under the spotlight in Istanbul at the Seatrade 2nd Winter Cruising Forum where MedCruise was a supporting organisation.

George Nikitiades, deputy minister of the Greek Ministry of Culture & Tourism, announced measures for the removal of cabotage restrictions, which was later approved this January and passed to parliament.

Binale Yildirim, Turkey's minister of Transport, Marine Affairs and Communications, spoke of the need to grow winter cruise tourism in Turkey: 'We have a climate that is conducive to expanding cruising for 365 days, especially in the Aegean.'

Giora Israel, Carnival Corp's svp global

ports and destination development, said 'Our ships are built to operate year-round and with the high investment involved we need to operate them year-round, preferably in the same region.' He added: 'The future is keeping even more ships in the Med year-round.'

Agreeing, John Tercek, Royal Caribbean Cruises Ltd.'s vp commercial and new business development, concluded: 'Leaving the ships in the Med is the logical conclusion.'

MedCruise president Stavros Hatzakos presented Med market statistics covering 2012 and highlighted the growth in cruising in the five winter months Nov-March, when 2.5m passengers and 1,416 calls were received in 2010.

Norwegian Cruise Line's Steve Riester,

said by adding a second ship in the Med year-round out of Civitavecchia, 'We are showing our level of commitment to the region.'

Bill Gibbons, director of the Passenger Shipping Association, provided statistics on the growth in UK passengers cruising in winter months. Some 63,000 cruised last year compared to 37,000 in 2008, with the Med drawing 13%.

Erkunt Oner, ceo Tura Turizm saw Istanbul playing a pivotal role in growing cruise activity in the Aegean, Eastern Med and the Black Sea with a new terminal expected to be operational by 2014. 'We believe cruise activity will be crazy in future as the port is uniquely positioned for butterfly cruises covering the entire region.'



Fellow panelists: Royal Caribbean's John Tercek and Stavros Hatzakos



Holland America Lines' Simon Douwes with Greek deputy minister shipping, Adonis Georgiadis and Port of Heraklion's Ioannis Bras



MedCruise president Stavros Hatzakos with Board director Figen Ayan (Global Ports)



TUI Cruises duo: Jens Kroeger and Tine Oelmann



NCL's Steve Riester and Cartagena's Fernando Munoz



L-R: Barbara Casolla (Naples), Gianfranco Gerini (Trieste), Board director Livio Ungaro (Trieste) and John Portelli (Valletta)

Balearics

The majority of the five ports dotting the Spanish Balearic island group are scheduled to see a rise in cruise calls in the forthcoming cruise season. The port of Ibiza will see a boost in vessel calls from 123 in 2011 to 152 for this year and a similar hike in passenger numbers from 129,369 to 265,461 passengers. Mahon anticipates 87 calls and 64,632 passengers up from 79 calls and 53,570 passengers, while Alcudia will see one call and 64 passengers as compared to no calls during the 2011 season.



The authorities will unveil a number of improvements in the course of the year that include docking facilities for up to five cruise ships of over 300mtr loa at Palma – to be operational in the summer, new piers at Ibiza – also scheduled for summer and deeper waters up to 8mtr at Mahon.

At Alcudia a passenger terminal has recently been constructed which is capable of receiving ships of medium length alongside.

MedCruise contact Francisca Leal:
fleal@portsdebalears.com



The Azores

The nine islands forming the autonomous Portuguese archipelago of the Azores have proved popular with cruise lines, with the ports anticipating a boost to both cruise calls and passenger numbers. For the 2012 cruise season, the Azores is scheduled to see cruise calls increase by 41.5% to 133, while passenger throughput will see a linked hike of 29.9% to 113,000 passengers.

Contributing factors to the increase in these figures are the eight new vessels that will be calling at the ports. These are the Disney Fantasy, Adonia, Nieuw Amsterdam, Norwegian Spirit, Island Sky, Artania, Columbus 2 and Saga Sapphire.

The islands are working to upgrade infrastructure. A new

cruise terminal featuring a 263mtr long pier and 6.5mtr draught (to be increased to 8.5mtr by year-end) will be debuted in Horta on Faial Island in July. Tourist activities are also being improved at the maritime city of Ponta Delgada that include dolphin and whale watching, swimming with dolphins and seawatch.

MedCruise contact Andre Velho Cabral Moura:
andre.moura-pa@apsm.pt



Motril-Granada



Located on the Spanish coast, the port of Motril-Granada anticipates strong demand for its newly launched Helicopter sightseeing tours that offer visitors the chance to enjoy stunning vistas. There are three tours to choose from: La Alhambra from the Sky, The Alpujarra's Range and Flying over the Tropical Coast.

The port is scheduled to host 11,200 passengers from 29 calls this season, which will include new calls by Riviera, Nautica, Regatta, Albatross, Hamburg and Seabourn Spirit.

MedCruise contact Jose Bermudez del Valle:
jbermudez@motrilport.com

Almeria

Almeria, located in South Eastern Spain, caters to cruise ships, general cargo vessels and also ferry traffic with frequent connections to Northern Africa. The city itself is extremely picturesque; with both new structures as well as an older section of the city that contains Moorish-style structures.

Visitors to the city are able to enjoy visits to the Cathedral of Almeria, The Arab Wells (Los Aljibes) and also the 'Cueva del Morato' – which has proved popular due to its flamenco show. The authorities have also announced plans to widen the marina area and build a cruise berth aside.

The port is anticipating a significant reduction to passenger throughput for 2012 as a result of Louis Cruises' decision not to call at the port. However, it will see new cruise calls by Pullmantur's Empress and Astor Shipping's Astor. Accordingly, it is scheduled to receive 32 cruise calls that should result in 24,898 passengers during the year.

MedCruise contact Jose Antonio Cuesta:
jacuesta@apalmeria.com



Cartagena



The Spanish cruise port of Cartagena is set for a record year in 2012 with an 8% increase in cruise calls to 84 visits that will see it play host to over 90,000 passengers – up from 77 calls and 88,000 passengers last cruise season. These figures have been assisted by a number of new calls that include the inaugural voyage of the Saga Sapphire as well as visits by the Seabourn Odyssey, Azura, Serenade of the Seas, Costa Allegra, Island Sky, Marco Polo and Azamara Quest.

Tourists can avail of established tours of the



area as well as a new walking tour of the Mining Park of La Union. The special 4,000sq mtr underground visitor's mine, Agrupa Vicenta, allows visitors to experience the whole process of underground mining dating back to the 19th century.

Cruise passengers will be welcomed at the Cartagena Cruise terminal that is positioned just 200mtr from the city centre and can host two vessels simultaneously on its 560mtr berth. Along with the upgrade to the berth in 2011, the port also developed a 4,000sq mtr area for buses and taxis that includes an information point. Works have been underway through the winter season to include rest and shaded areas as well as port police and civil guard centres.

MedCruise contact Hortensia Sanchez:
hortensia@apc.es

Sibenik

The port of Sibenik in Croatia will see six new vessel calls in 2012, which will result in a 10% boost to passenger numbers as compared to the 12,860 passengers from 113 calls seen the year before. The vessels are Seabourn Quest, Artania, Columbus II, Boudicca, Saga Sapphire and FTI Berlin.



The port is currently in the process of extending and reconfiguring its passenger wharves at the Vrulje quays to accommodate larger cruise ships and better handle ferry traffic. The first phase that caters to international traffic is expected to be completed mid-2012, while the second phase catering to domestic traffic will be completed by end 2013. Sibenik will also begin construction of a new passenger terminal in 2014 that will be created over the course of two years.

Tours on offer include visits to the Krka and Kornati National Parks that are located amongst the numerous islets of the Sibenik Riviera. Another option is a trip to the Falcon centre in Dubrava located 7km from Sibenik.

MedCruise contact Marijan Petkovic:
lucka-uprava-sibenik@si.t-com.hr

French Riviera

The French Riviera Cruise club hopes to attract a larger number of passengers to its French Riviera ports of Nice, Villefranche, Cannes, Antibes and Golfe Juan with its specially designed programme of 'green' excursions.

Cannes are expecting a 30% increase in passenger throughput, to 319,000 passengers from 159 vessel calls during the 2012 season. The port authorities at Cannes will have a new 200sq mtr cruise terminal to accommodate visitors by April 2012. Nice and Villefranche are expecting 408,301 passengers from 218 calls this year.

Caroline Valadie was appointed cruise and sales development manager for the French Riviera ports and is the single contact for all five ports in the group.

MedCruise contact Caroline Valadie
caroline.valadie@cote-azur.cci.fr



Livorno

The Italian port of Livorno will hit the 1m passenger marker this year in spite of a slight decrease in vessel calls to 462 from the 497 calls seen the year before. These calls will include new visits by the Carnival Breeze, Carnival Eclipse, Celebrity Reflection, Columbus 2, Hamburg and the MSC Orchestra.

During the course of 2012, cruise lines will be able to dock at the dedicated 340mtr



long Alto Fondale berth number 46/47 and the port authorities are at the approval stage for a new cruise terminal. A new excursion introduced for the season is an 80km trip to visit the Etruscan Sites in the Archaeological Park of Baratti and Populonia that is operated through an agreement with Parchi della Val di Cornia.

MedCruise contact Ing. Giovanni Spadoni:
g.spadoni@portolivorno2000.it

Toulon

The French port of Toulon is seeing a staggering increase in both vessels and passengers, with anticipated vessel calls up by 53% to 130 and passenger numbers up 49% to 330,000. These figures play heavily in to the figures for the Var Provence region as a whole, which is expected to see up to 300 calls and 400,000 passengers.

The port, which will welcome 10 new vessels and three new cruise lines, is currently extending terminal facilities at its La Seyne Cruise Terminal and is involved in a project to construct a new berth in the downtown area of Toulon. Visitors to the city are able to choose from a selection of over 60 excursions ranging from explorations of Verdon gorge – known as the Grand Canyon of France, a tourist train excursion across the Haut Var or a bus tour of the Châteaux des Comtes de Provence.

MedCruise contact Delphine Beudin:
delphine.beudin@var.cci.fr



Sochi



Although the number of cruise ships calling at the port of Sochi in Russia will remain static at 30 for the upcoming season, the increase in vessel size means that it will host 26,000 passengers up from 20,400 seen in 2011. However, there will be a change in the vessels calling at the port, with Artania, Ocean Majesty, Regatta, SeaDream I and Hamburg making new calls to Sochi.

Port Authorities are investing heavily in a new cruise and ferry passenger terminal that will be set in the redeveloped waterfront area that features a retail component,

congress hall and convention centre. Visitors this year will be able to tour newly built sports venues for the 2014 winter Olympics and Paralympic games that will be hosting test events.

MedCruise contact Konstantin Saschenko:
saschenko@morport-sochi.ru



Venice

Venice in Italy hopes to impress visitors with its new Isonzo 2 cruise facility that was inaugurated in July last year. The new space will help accommodate the 1.8m passengers that will visit the port in 2012 from 673 ship calls. In fact, Venice will host 18 new callers this year: Carnival Breeze, Celebrity Reflection, Celebrity Silhouette, Columbus 2, Costa Fascinosa, FTI Berlin, Grandeur of the Seas, Hamburg, Harmony G, Kristina Katarina, Mona Lisa II, MSC Divina, Norwegian Spirit, Riviera, Saga Sapphire, Serenade of the Seas, Sun Princess and Thompson Destiny.

Further works are also underway such as the conversion of 109/110 buildings located along Tagliamento quay into two additional modern cruise terminals that will bring the total number of terminals at the port up to 10. Two additional berths and Terminal 123, all of which are currently being used for ro-pax and ferry traffic, will also be made available for cruise activity in the foreseeable future.



New excursions on offer include visits to the Lace Museum located at the historic palace of Podesta of Torcello in Burano – where the Burano lace school functioned

from 1872 till 1970.

MedCruise contact Francesco Drigo:
f.drigo@vtp.it



Ravenna

The port of Ravenna on the Italian Adriatic coast, has proved popular with cruise lines and is scheduled to receive 63 calls and 96,000 passengers during the course of 2012. This number is slightly reduced from the year before when it saw 156,000 passengers from 79 calls. The decrease is due to the fact that RCCL decreased its visits by nine calls and Pullmantur by five calls. New vessels calling at the port are AIDAaura, Amadea, Seabourn Quest, Serenade of the Seas, Harmony G, Celebrity Silhouette, Crystal Serenity, Aegean Odyssey and Minerva.

The port, which is mulling construction of a 3,000sq mtr terminal for the 2013 season, offers tour opportunities such as a day trip to Florence by bullet train via Bologna and visits to Ferrara and Faenza.

MedCruise contact Mariliana Moschona:
mariliana.moschona@port.ravenna.it



Souda/Chania

The Greek port of Chania anticipates receiving 55 cruise vessels and 130,000 passengers during this season, the same as seen in 2011, albeit with six new ships calling at the port. The authorities are in the process of securing financing for the newly designed passenger terminal, with work slated to begin in 2014. Other works in the pipeline include the lengthening of the Adrias quay by 160mtr to a total of 556 by 2015.

Chania has a number of tours on offer

including cultural excursions around the town which allow sea views of the Byzantine wall and trips to the beach, local monasteries, the cave of the bear and archeological site of Aptera. Attractions such as the archaeological museum and naval museum are popular with tourists as are the plethora of cultural events held over the summer.

MedCruise contact Stella Manioudaki:
stelman@ltnx.gr

Dubrovnik



The Croatian port of Dubrovnik is seeing trend towards larger vessels manifest, meaning that although it will experience a 4.7% decrease in cruise calls from 681 in 2011 to 649 for this year, it will see a 9.16% increase in passenger numbers, pushing it past the 1m passenger mark. It is also seeing an infusion of new calls from a total of sixteen vessels scheduled to dock this season.

The recent completion of phase one of the Batahovina I infrastructure project allows small and medium size cruise ships to dock at a 220mtr operative quay. An additional 400mtr

of quay line will be added by 2014 under phase two of the project. Tours on offer to cruise passengers include a four and a half hour scenic train ride in Konavle that includes stops for wine tasting, wool processing, a visit to a flour mill and a traditional peasant's brunch of bacon and onions

The new vessels calling at the port are Thompson Destiny, Costa Favolosa, Costa Fascinosa, Riviera, FTI Berlin, Celebrity Silhouette, MSC Divina, Carnival Breeze, Sun Princess, Grandeur of the Seas, Serenade of the Seas, Hamburg, Oceana, Reflection and a Saga vessel.

MedCruise contact Kristijan Pavic:
dpa.kristijan@portdubrovnik.hr





Lemesos/Larnaka

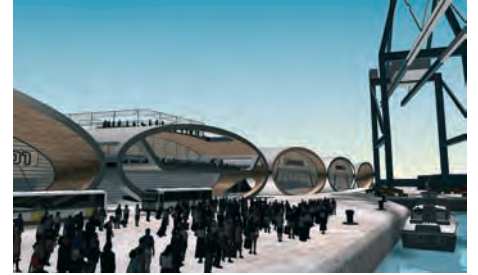
The Cyprus Ports Authority, announced a throughput of 180,000 passengers from 190 cruise calls in 2012. From the total passenger number, 40,000 are homeport passengers – with 40 vessel calls scheduled to begin and end at Lemesos port, while the rest are transit visitors from the 150 vessels calling at the port.

Lemesos is in the process of constructing a 6,800sq mtr passenger terminal consisting of one departure hall, two arrival halls, separated luggage handling area, parking, offices and also a luxurious restaurant on the 1st floor. The terminal is scheduled for completion in 2013.

Plans for redevelopment of Larnaka port

and Marina are also underway with the aim of increasing their appeal to cruise passengers.

MedCruise contact Yiannakis Kokkinos:
kokkinos@cpa.gov.cy



Gibraltar

The port of Gibraltar has proved popular with cruise lines and is scheduled to host 178 cruise calls and 302,626 passengers for the 2012 season. The port will see inaugural calls from MSC Divina, MSC Magnifica, Grand Mistral, Serenade of the Seas, Star Flyer, Island Sky, Azamara Quest, Saga Sapphire, Riviera, Marina and Voyager.

The port city recently completed refurbishments to its Europa Point giving visitors access to restaurants, gardens and a viewing gallery across the bay to North Africa.

MedCruise contact Albert Poggio:
a.poggio@gibraltar.gov.uk

Genoa

The Italian port of Genoa has invested over €1m in infrastructure to increase its appeal to cruise lines with the extension of its disembarkation hall at the Ponte dei Mille Cruise Terminal and an extension of the passenger's hall at the Ponte Andrew Doria Cruise Terminal. The port anticipates a total of 202 calls and 820,000 passengers, of whom 585,000 will be home port passengers and 235,000 will be transit passengers. New vessels calling at the port are MSC Magnifica, Riviera, Celebrity Eclipse, Celebrity Silhouette and the Spirit of Adventure.

MedCruise contact Edoardo Monzani:
monzani@smge.it



Kusadasi/Bodrum/Antalya



The Turkish ports of Kusadasi, Bodrum and Antalya are all predicting an increase in passenger numbers this year. Kusadasi and Antalya both anticipate a 4% increase that will see them play host to 678,750 from 550 calls and 155,000 passengers from 63 calls respectively. Bodrum is expecting an even bigger increase of 7% to

54,000 passengers from 110 calls.

Accordingly the ports are improving their infrastructure to cater to this increased throughput. Kusadasi, which serves 32 cruise lines, extended two of its piers to offer 1,437mtr of berthing space in total that can accommodate even Oasis class vessels. Antalya, which will host 17 cruise lines of which seven are new clients, has extended its terminal building. It has completed dredging in the area and construction of a duty-free shop.

Bodrum will also host 17 cruise lines – of which five are new clients. The port has reaped the benefits of extending its finger pier by 50% in 2011, allowing larger Royal Caribbean and Celebrity Cruise vessels to call.

MedCruise contact Figen Ayan:
figena@globalports.com.tr

Barcelona



The major hub of Barcelona continues to attract many cruise vessels and tourists to its myriad attractions. As the second largest city in Spain, it boasts a number of bars, cafes and shops that provide an alternative to cultural exploits such as visits to Park Güell, the Barri Gòtic (Gothic Quarter) and, of course, Gaudi's famous Sagrada Familia.

The port, which is extremely popular with cruise lines and operates seven working terminals on its premises, will see a slight dip

in numbers for 2012, with 830 calls and 2.5m passengers. This compares to 881 calls and 2.6m passengers during the 2011 season. The port authorities, who have attributed the decrease to consolidation in the number of passengers and calls, have revealed that Barcelona will see new calls from five vessels this season.

MedCruise contact Carla Salvado:
carla_salvado@portdebarcelona.es

Ceuta



The Spanish port of Ceuta hopes that its status as a duty free shopping centre will continue to draw in tourists. The port predicts calls by 15 vessels carrying 7,000 passengers based on provisional data for 2012. Ceuta recently upgraded its cruise terminal to cater to the needs of passengers. It is now able to accommodate up to 2,000 passengers from vessels exceeding 220mtr loa.

The terminal, which is located a mere

100mtr from the city centre, is ideally placed to facilitate tours to neighbouring countries in the Magred region of North Africa. Visitors choosing to avail of local facilities can enjoy the Parque Marítimo del Mediterraneo leisure complex that features salt-water lakes with waterfalls that are suitable for bathing as well as gardens.

MedCruise contact Victor Jimenez:
victor@puertodeceuta.com

Valencia

The Spanish port of Valencia will see a 30% increase in passenger throughput to 480,000 cruisers from 200 port calls for this season. New visitors include Costa Serena, Golden Iris, Riviera, Crystal Symphony, Mariner of the Seas, MSC Splendida, Empress, Marco Polo, Costa Fortuna and Serenade of the Seas. Work is also progressing on the new passenger terminal and two cruise berths at Valencia, which construction slated to be completed by end-2013.

MedCruise contact Cristina Rodriguez:
crodriguez@valenciaport.com



Batumi

The Black Sea port of Batumi has seen a steady improvement to tourist facilities over the past few years that have assisted it in its goal to be a major tourist hub. The Batumi seaside park was recently expanded to 12km in length, while tour operators have been beefing up their offerings for cruise visitors. Accommodation facilities are also being revamped, and Batumi now boasts new Sheraton and Radisson hotels, while hotels for the Hilton, Kempinski and Holiday Inn brands are currently under construction.

The port anticipates calls from 10 cruise vessels in the 2012 season that will include first time calls by the Regatta and Princess Daphne. Batumi port expects to host 3,080 cruise passengers – up from the 2,564 passengers from eight calls seen in 2011.

MedCruise contact Ilona Karapetyan:
homeriki@batumiport.com



Sinop

The Turkish port of Sinop believes it will see strong growth during the 2012 season. It is scheduled to receive 5,000 passengers from 14 cruise calls this year, which is a 20% improvement on 2011.

MedCruise contact Bulent Saglam:
b.saglam@cakports.com



Rijeka

The Croatian port of Rijeka anticipates a slight increase in numbers for the coming cruise season, improving upon the 15,120 passengers and 249 calls it saw in 2011. In line with its goal to attract more business, the Port of Rijeka Authority organised the OPEN DAYS event which was held in November 2011 to disseminate information about the finalisation phase of bidding process as well as redevelopment solutions of Delta and Porto Baros. With that said, the port has been successful in attracting new business and will see a call from P&O Cruise's Oriana for a day visit on April 19th.

Rijeka, which hopes to build a reputation as a year-round destination, special for its unique vicinity of beautiful beaches and attractive ski centre situated in the mount of Platak overlooking the Kvarner Bay.

MedCruise contact Snjezana Papes:
snjezana.papes@portauthority.hr



Trieste

The Italian port of Trieste will welcome visitors for the summer cruise season at its new €10m passenger terminal. The authorities anticipate 56 calls and 147,000 passengers, which is significantly over double the number seen in 2011. One of

the reasons for the increase in passenger throughput is that 10 new vessels will call at Trieste during 2012.

MedCruise contact Livio Ungaro:
lungaro@triesteterminalpasseggeri.it

Sete

The port of Sete in France is targeting the high end niche in the cruise sector, and will accordingly see calls from a number of small or middle size cruises. Although this means a slight decrease in passenger numbers from 21,000 passengers

seen in 2011, it does mean that vessel numbers remain steady at 25 cruise calls. Cruise visitors can enjoy a number of tours around the stunning country side to vineyards, monasteries and the coast. They will be received at the new cruise terminal that was refurbished last year.

MedCruise contact Catherine Lafon:
lafon.catherine@portsuddefrance-sete.fr



Marseille



The port of Marseille in France has seen a steady increase in passenger throughput from just 164,000 passengers from 183 calls in 2000 to 810,000 passengers and 380 calls in 2011. For the upcoming season it anticipates receiving 890,000 passengers from 350 calls and predicts that it will cross the 1m passenger mark in 2013 when it will serve as the European Capital of Culture.

Beyond hundreds of calls and turnarounds operated by MSC, Costa Cruises, Croisieres de France, Arcalia Shipping etc, the port has seen an influx of operators, and as of this year the Norwegian Epic, the Horizon and the Grandeur of the Seas will all offer cruises departing from Marseilles. The port will also host a naming ceremony for the MSC Divina on 26th May 2012.

Marseille has invested to create 2 new cruise terminals, one will be ready in April 2012, the other one will be delivered end of year, and is in the process of upgrading the northern entry pass to accommodate the largest cruise ships. It is also developing a new terminal dedicated to luxury cruises that will be located close to the historic city centre and feature two berths.

MedCruise contact Christelle Maubec:
cmaubec@marseille-cruise.com



Messina

The port of Messina, situated in the channel that separates Sicily from Italy at the center of the routes between East and West Mediterranean, is in process of drawing up plans for a new passenger terminal. Although details have not been finalized as yet, the structure may appeal to cruise lines to confirm the excellent performances of the last years. In 2011 Messina achieved the record of half million passengers off 257 calls whereas for the 2012 the port expects 431.000 passengers from 185 calls.



That said, Messina will see new calls by the following vessels: Carnival Breeze, Celebrity Silhouette, MSC Divina, Riviera, Adonia, Aurora, Azura, Oceana, Ventura, Empress, Horizon, Serenade of the Seas, Seabourn Odyssey, Seabourn Pride, Thompson Destiny and the FTI Berlin.

MedCruise contact Cristiana Laura:
laura@porto.messina.it

Lisbon

Lisbon in Portugal will host special welcome ceremonies for 10 vessels calling at the port for the first time, including the MSC Divina, which will call at the port on its maiden voyage. The other first time callers are Sovereign, Saga Sapphire, Grandeur of the Seas, Grand Holiday, Costa Voyager, Costa Neoromantica, Riviera, Sun Princess and AIDamar.

The port anticipates a 8% increase in cruise calls to 358 and a 10% increase in passengers to 560,000 for 2012. Vessels calling at the port can avail of 1,450mtr of berthing space that includes a recently constructed cruise pier. Work is currently underway on the new 7,790sq mtr Lisbon Cruise Terminal that was designed by Carrilho da Graça and is scheduled for completion in 2014.

Visitors will be able to embark on



established tours as well as two new options: A birdwatching and nature tour at the Tagus Estuary Nature reserve that has over 250 species of birds; The Morgado Lusitano Equestrian Show that displays 18th century

customs for competition and classical dressage.

MedCruise contact Manuela Patricio:
mpatricio@portodelisboa.pt

Piraeus



Piraeus Port in Greece anticipates about 800 ship calls, resulting in 2.6m visitors for 2012 as compared to 2.5m visitors from 936 ships the year before. Of the total calls for this year 17 ships are newcomers, with larger vessels taking the place of many small and medium size ships. Piraeus' support of winter cruising – with discounted rates in play up to 30%, could also boost vessel calls.

To meet the increasing demand, during 2011 the port expanded the security systems in terminals A and B. By Spring, it will have completed the upgrade and expansion of terminal A and finished reconstruction of a third terminal.

In addition to enjoying tours of Athens, including the Acropolis-Parthenon, visitors can make day trips to Sounion or Delphi. They may also enjoy a short boat trip to the islands of Aegina, Poros and Hydra.

MedCruise contact Theodoros Tsitouras:
tsitourast@olp.gr

Portoferraio

The Italian port of Portoferraio is braced for a 30% increase in port calls from 66 in 2011 to 89 for this year – this includes a return of calls by Fred Olsen vessel Black Watch. The subsequent increase in passengers will be able to enjoy the sights and sounds of the port city as

Odessa

The Black Sea port of Odessa has received positive reviews of its 'Light Keeper's Tour' which was introduced only last year. The tour allows guests to explore the operational Vorontsov lighthouse – something that is closed off from the general public.

The port is currently conducting activities for reconstruction arrangements of the entrance hall of the port terminal and also an overpass connecting the passenger terminal and city. These changes will improve its

image to the 73,100 passengers who will visit Odessa from 108 cruise ships during 2012 – with a noticeable trend towards larger vessels calling at the port. In addition to returning ships, Odessa will also see calls from MSC Lirica, Costa Romantica, Queen Elizabeth, Arcadia, Azura, Oceana and Harmony G.

MedCruise contact Yuriy Vaskov:
welcome@port.odessa.ua



well as embarking on tours. A popular option is a tour of Elba which includes a drive through the beach resort of Procchio followed by visits to the villages of Poggio and Marciana.

A newer tour – suitable for more able passengers, is a hiking tour along the slopes

of Mount Capanne. The tour lasts for an hour and a half, including a visit to the Church of San Cerbone, culminating with lunch in the village of Poggio.

MedCruise contact Giampiero Costagli:
info@porto.portoferraio.li.it



Heraklion

Heraklion Port Authority launched a city guide for iPhone and Android. The free app is compatible with iOS 4.2.1 or later and Android 2.1 or later.

Compiled by experts and residents of Heraklion, the app helps visitors track down the best bits on-the-go, featuring the lowdown on great museums, attractions, restaurants, bars, arts, entertainment and shopping for the city.

Best of all, is the Heraklion City Guide app is entirely offline, so users will not incur any unexpected roaming charges.

Key features and functionality include offline maps and 'Locate Me' facility, Bookmark for favourite points of interest with "My Places" feature, What's nearby, Port Info, See and Do, Eat and Drink, Shopping, Travel and Transportation, Beaches, Banks and ATMs and photos.

Heraklion, in Crete, recorded 300 calls in 2011.

MedCruise contact Ioannis Bras:
ceo@portheraklion.gr



Valletta

Artania, Celebrity Silhouette, MSC Divina, Riviera, Grandeur of the Seas, Mein Schiff 2, Celebrity Reflection and Costa Fascinosa will all make debut calls in Valletta, Malta this year, where in 2011 over half a million passengers arrived on 311 calls.

The extension of Lascaris Wharf was completed in 2011, improving berthing facilities for large cruise ships at Valletta Cruise Port. The project aligned Lascaris Wharf with Pinto Wharf and rejuvenated the area.

New for passengers arriving this year is The Maltese Bread Experience at Nenu's

bakery in Valletta, where visitors can experience the taste and smell of freshly-baked Maltese bread stuffed with a variety of ingredients, also baking their own bread. This besides the newly-opened Carnival Museum on the Valletta Waterfront.

Last year the Valletta Waterfront launched an educational program aimed at children with interactive and fun options like a harbour cruise, pizza preparation and an audio-visual show about Malta through history and more.

MedCruise contact John Portelli:
jportelli@vallettacruiseport.com



Malaga

A 9.6% increase in cruise passengers is expected at Malaga in 2012 with 315 ships set to bring 700,000.

Between April and December this year, the Port of Malaga expects the arrival of 10 maiden callers: MSC Magnifica, Celebrity Reflection, Carnival Breeze, Norwegian Spirit, MSC Divina and others.

A small passenger terminal on berth 2 giving passengers a more comfortable walking access in just 5 minutes to the historical centre is expected to be inaugurated in June 2012. This will service passengers from small and medium sized ships.

Malaga Cruise Bureau continues working with local service providers and institutions involved in the cruise business to consolidate and develop the city and surrounding area as a cruise destination.

MedCruise contact Sebastian Camps:
info@malagaport.net



Royal presence in the Med



Royal Princess will debut with an inaugural season of 12-day sailings between Barcelona and Venice, and the ship will feature a vastly expanded atrium with new features. Before its first 'Grand Mediterranean' voyage on June 23, Royal Princess will sail a seven-day inaugural voyage from Southampton to Barcelona departing June 16.

"It's fitting that our new ship will cruise on our most popular Europe itinerary, the 'Grand Mediterranean,'" said Princess evp Jan Swartz (pictured).

Nine 12-day 'Grand Mediterranean' voyages follow, with departures through Sept. 27. Sailing between Barcelona and Venice (overnight call), the ship will visit Toulon, Livorno, Civitavecchia, Naples, Mykonos, Istanbul, Kusadasi and Piraeus.

CMV's duo calls the Atlantic islands

2012 will see Cruise & Maritime Voyages' Marco Polo visit the Azores & Madeira for the first time. The 15 night cruise departs from Tilbury, UK in August and heads off to four Atlantic islands, three in the Azores and then onto Funchal in Madeira. The adults-only ship is stopping at Lisbon en route. In October, six MedCruise member ports feature in the ship's Mediterranean Gold 14 night voyage. CMV's Ocean Countess will visit Canary Islands and Madeira twice this year.



Holland America Line's magnificent seven

Holland America Line's 2012 Mediterranean season includes varied itineraries of seven to 42 days and one 62-day 'Grand Mediterranean and Black Sea Voyage' aboard Prinsendam. Six of the line's other ships—Eurodam, Nieuw Amsterdam, Noordam, Rotterdam, Maasdam and Ryndam—also will sail the region on 32 different itineraries that span the eastern and western Mediterranean.

Prinsendam's 62-day voyage sails round-trip from Florida's Port Everglades on March 12 and will visit 32 ports in 14 countries. The

ship will overnight in Istanbul, Piraeus, Venice, Barcelona and Lisbon.

Other highlights of the season include three 12-day sailings on Nieuw Amsterdam that explore Spain, Italy, Greece, Turkey, Montenegro and Croatia. Two 10-day itineraries on Noordam can be combined to form a 20-day 'Collectors' Voyage' with calls at ports in Italy, Monaco, Spain, Tunisia, Croatia, Greece and Turkey.

The new 17-day 'Spanish Rhapsody' sailing round-trip from Rotterdam on board Rotterdam visits Spain, Portugal and Italy.



MSC Divina arriving in May

MSC Cruises is talking about newbuild MSC Divina, which joins in May as the largest ship in the fleet at 139,400gt, with 1,751 staterooms for double occupancy of 3,502 passengers and total capacity for 4,363. Features include an Infinity Garden Pool and 'beach zone' in the aft section

overlooking the ship's wake, an exclusive MSC Yacht Club (with 69 suites, versus 72 on earlier ships), three main restaurants and a Tex-Mex alternative dining venue.

Among the other facilities are a bowling alley, an MSC Aurea Spa with Balinese-inspired treatments, children's and teen

areas, an interactive 4-D Cinema and virtual Formula 1 auto racing. The main Pantheon Theatre seats 1,603.

The ship is scheduled to be christened on May 26 in Marseille.

After a positioning cruise to Venice, MSC Divina will operate seven-night eastern Mediterranean sailings round-trip from Venice and Bari with calls at Katakalon, Izmir, Istanbul and Dubrovnik, through October.



Silversea's 'Slow Food Adventure'



Silversea Cruises created a new 'Slow Food Adventure in Tuscany' land option that will debut on three Mediterranean voyages in 2012.

In collaboration with Slow Food Italy, the line designed an exclusive three-night program that highlights local wine producers and products that adhere to the Slow Food philosophy of preserving biodiversity and gastronomic traditions.

From Rome, participants will take a scenic drive into the Brunello region of Tuscany, leading to the vineyard estate of wine producer Castello Banfi. Included are three

nights at Il Borgo, Castello Banfi's hotel amid the vineyards and olive groves of Montalcino.

Highlights include a cooking class, winery tour and a full-day tour of Slow Food-recommended vineyards, olive groves, farms or other traditional food-producing operations in and around Bolgheri, escorted by Silversea's culinary team.

The program is available as a pre-cruise option with Silver Wind's April 30 voyage (Rome to Venice) and Silver Spirit's Oct. 22 sailing (Rome to Barcelona). It's also available as a post-cruise option with Silver Wind's April 17 voyage (Barcelona to Rome).

Crystal adds more in-port overnights

Crystal Cruises has been focusing on more in-port overnights to begin its sailings. For the upcoming Europe season, Crystal Serenity and Crystal Symphony have doubled the number of voyages that begin with days (and nights) in port.

Crystal said the move eases worries about late flight arrivals, lost luggage, relocating to/from hotels, finding dining and settling in prior to sightseeing.

The line has also added overnights to the middle and/or end of most cruises this year. Overnights at the disembarkation ports of Venice, Barcelona or Istanbul, for example, enable passengers to see significantly more of the final destination without having to move to a hotel or rush to the airport to fly home.

For example, in the Mediterranean & Black Sea Crystal has overnights in ports such as Venice, Istanbul, Odessa, Barcelona, Lisbon and Monte Carlo.



Disney returning to the Med in 2013

Disney Cruise Line is returning to the Mediterranean in 2013 with new twists including different cruise lengths and fresh destinations such as Venice and the Greek Isles. Starting in June, Disney Magic will sail a four-night option and special 12-night sailings in addition to seven-night cruises. All departures are from Barcelona.

The new 12-night sailings visit destinations such as Venice and Croatia's Dalmatian Coast on one itinerary and Ephesus and the Greek Isles including Athens on another. Each itinerary will offer one June and one July departure. The four-night cruises, one in July and one in August, will visit Villefranche and Palma de Mallorca.

The seven-night itinerary includes Villefranche, La Spezia, Civitavecchia and Naples.



More East Med for Louis

Louis Cruises is concentrating on Eastern Mediterranean itineraries for 2012, operating two ships out of Piraeus and one from Limassol.

Louis Cristal and Louis Majesty will both sail out of Greece, the former on 8 day/7 night itineraries and the latter on 4 day/3 night and 5 days/4 night cruises, to the Greek islands and Turkey. The 2012 programme starts in March from Piraeus through to early November.

Louis Cristal's round trip Piraeus includes an overnight in Istanbul and calls in Izmir (for Ephesus), Patmos, Mykonos, Rhodes, Crete and Santorini.



MEDCRUISE NEWS

BRINGING THE MED TOGETHER

Professional development course

20 MedCruise members became students for four days on a ferry at-sea with eight industry leaders as professors during MedCruise's third edition of its professional development course entitled: 'The cruise industry's new deployments'. The course organised by MedCruise with the support of Escola Europea de Short Sea Shipping (EESSS) took place on a sailing between Barcelona and Civitavecchia. In Civitavecchia the group visited the cruise terminal.

MedCruise offers this course to its members' staff as part of its mission to support the growth of the cruise industry in the Mediterranean and to enhance their level of knowledge and allow the ports to network with the cruise line lecturers.

The students worked closely with the instructors which included Giora Israel (Carnival Corporation & plc),

Bruce Krumrine (Princess Cruises), George Michaelides (George Chr. Michaelides Tourism Consulting Ltd), Luis Ajamil (Bermello, Ajamil & Partners) and Ted Thompson (CLIA).

The next edition of the MedCruise professional development course will have a new structure and scenario.



L-R: Professors' Israel, Michaelides and Thompson

Maria de Larratea appointed Secretary General, MedCruise

Maria de Larratea was appointed last November Secretary General of MedCruise. Maria, based in Barcelona, had been undertaking duties as Deputy Secretary General of the Association since July 2011. Maria, who was born in Barcelona, has worked internationally and is fluent in five languages: Spanish, English, Catalan, French and Italian and is also learning Greek and Portuguese.



Gibraltar's new captain of the port

Captain Roy Stanbrook took over as CEO of the Gibraltar Port Authority and Captain of the Port earlier this year. Tony Davis continues as director of maritime affairs and Albert Poggio OBE continues to look after the interests of Gibraltar for MedCruise and assist in the marketing of the cruising sector of the port.

Gibraltar's new Minister with responsibility for the Port and Tourism, The Hon Neil Costa MP, is visiting Cruise Shipping Miami 2012 where he will take the opportunity of meeting many of the cruise lines which currently feature Gibraltar on their itineraries.



March 2012 | Issue 35

MEDCRUISE

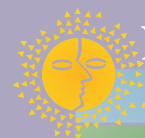
World Trade Center,
Edificio Est, 3a Planta
08039 Barcelona, Spain
Tel: +34 93 306 88 00 ext 7358
Fax: +34 93 306 88 17
secretariat@medcruise.com
Maria de Larratea, Secretary General

MEDCRUISE MEMBERS

ALANYA
ALICANTE
ALMERIA
AZORES
BALEARIC ISLANDS
BARCELONA
BARI
BATUMI
CAGLIARI
CARTAGENA
CASTELLON
CEUTA
CIVITAVECCHIA
CONSTANTZA
CYPRUS PORTS
DUBROVNIK, KORCULA
EGYPTIAN PORTS
FRENCH RIVIERA PORTS
GENOA
GIBRALTAR
HERAKLION
IGOMENITSA
ISTANBUL
KAVALA
KOPER
KOS
KUSADASI, BODRUM & ANTALYA
LA SPEZIA
LATTAKIA
LISBON
LIVORNO
MADEIRA PORTS
MALAGA
MARSEILLE
MESSINA
MONACO
MOTRIL-GRANADA
NAPLES
NORTH SARDINIAN PORTS
ODESSA
PALAMOS
PALERMO
PATRAS
PIRAEUS
PORTIMAO
PORTOFERRAIO
RAVENNA
RIJEKA
RIZE
SETE
SEVASTOPOL
SIBENIK
SINOP
SOCHI
SOUDA/CHANIA
SPLIT
TARRAGONA
THESSALONIKI
TOULON-VAR-PROVENCE
TRIESTE
TUNISIAN PORTS
VALENCIA
VALLETTA
VENICE
VOLOS
YALTA
ZADAR

ASSOCIATE MEMBERS

EUROPEAN CRUISE COUNCIL
KVARNER COUNTY TOURISM
OFFICE - RIJEKA
TURISME DE BARCELONA
- BARCELONA
AFRIMAR TUNISIA - TUNISIA
ALOSCHI & BASSANI
- VENICE
BC TOURS & SHIPPING
- BARCELONA
CAMBIASO & RISSO - GENOA
CEMAR - GENOA
DONOMIS CRUISE SERVICES
- VOLOS
F.A. TRAVEL - NORTH
SARDINIAN
HUGO TRUMPY SRL - GENOA
IDU SHIPPING & SERVICES
- CONSTANTZA
INFLOT WORLD WIDE
- SOCHI
INTERCRUISES SHORESIDE & PORT SERVICES
- BARCELONA
KARAVANMAR CRUISE SERVICES - ALANYA
KARPATEN TURISM SRL
- CONSTANTZA
LIVORNO PORT AUTHORITY - LIVORNO
LONDONSKAYA - ODESSA
MERCANTILE MARINE
SHIPPING - TUNISIA
MH BLAND - GIBRALTAR
NAVIGATOR TRAVEL & TOURIST SERVICES
- VOLOS
P&B AGENCIES - BARCELONA
SALAMIS ORGANISATION - CYPRUS
SAMER & CO. SHIPPING
- TRIESTE
SELECT BLACK SEA LTD
- SEVASTOPOL
TRANSCOMA CRUISE & TRAVEL - BARCELONA
TURA TURIZM
- SINOP



MEDCRUISE

THE ASSOCIATION
OF MEDITERRANEAN
CRUISE PORTS

Seatrade

Published by Seatrade Communications Ltd