



MedCruise NEWS

issue 59

March 2020



PORTS
TOGETHER

#CruiseTheMed

www.medcruise.com
www.medcruise.cn

55th MedCruise GA in Antibes



Welcome Reception, Garden Beach Hotel



Panel discussion about Challenges of the Cruise Industry

MedCruise General Assemblies have established themselves as major cruise events in the Mediterranean and adjoining seas. The 55th edition of the MedCruise General Assembly has been hosted by the MedCruise member Ports Riviera – CCI Côte d'Azur, composed by Ports of Cannes, Antibes, Nice and Villefranche.

Juan-Les-Pins (France), Côte d'Azur, was for a week the capital of the cruise industry worldwide hosting the 55th MedCruise General Assembly, Oct 1st -4th. More than 140 delegates from MedCruise port and associate members, cruise lines executives, international press representatives and local authorities gathered together to discuss the latest trends in the industry and develop synergies towards sustainable cruise services.

Latest tasks developed by the Board of Directors and the four Working Groups regarding the cooperation among ports and destinations, the new edition of the Professional Development Course, the new marketing plan, the North Africa and Black Sea regions promotion actions, the cruise-industry events participation, the European Union affairs, new projects and studies, sustainability and environment, cooperation with other Associations, and source markets analysis were discussed during the Internal Matters Session.

Nearly nine hundred B2B meetings took place between MedCruise members and cruise lines executives as well as international cruise press representatives during two very busy days. Moreover, up to six Plenary Sessions, made up of quality cruise experts, have provided interesting discussions about the industry and opportunities to learn more about trends in the Mediterranean in terms of the cruise market.

During the session Trends in the Med, MedCruise members along with cruise line executives and international press representatives had the chance to discuss in detail about the cruise industry latest developments. Cruise industry opportunities, environmental issues and new regulations, the luxury market, and the challenges of the cruise industry were also discussed and analysed in other plenary sessions.

MedCruise attendees had a busy 4-day schedule which kicked off with an official opening and welcome reception. The gala dinner took place at the emblematic Villa Ephrussi de Rothschild in Saint-Jean-Cap-Ferrat. On the last day three shore excursions were available for members and guests "Nice city capital of the Côte d'Azur", "Antibes Juan Les Pins", and "Golf and Gastronomy in Villeneuve Loubet", where members and guests enjoyed together activities and the taste of local specialties.

Airam Diaz, President of Medcruise Association said: "We are honoured to be hosted by our beloved member French Riviera Ports. Our prestigious Association, as a key member of the industry, is committed to the new opportunities and challenges that are to come. MedCruise members, which handled more than 28 million cruise passenger movements in 2018 for first time in our Association's history, are contributing at the sustainable growth of the cruise industry during this bright period."

#55MedCruiseGA
#PortsTogether
#WeAreSocial



B2B Meetings



Figen Ayan, Director for Professional Development



Members at the Coffee Break



Helicopter and panoramic flight over coastline to Antibes Juan-les-Pins



Farewell Dinner Médusa Cannes



Group photo



Gala Dinner at Villa Ephrussi de Rothschild in Saint-Jean-Cap-Ferrat



Live Music at the Gala Dinner



Cruise Lines and Press Representatives visit Saint-Honorat Island



Honorary MedCruise President Laurent Monsaingeon



Farewell Dinner Médusa Cannes



B2B Meetings



Gala Dinner at Villa Ephrussi de Rothschild in Saint-Jean-Cap-Ferrat



Live Music at the Gala Dinner



Gala Dinner at Villa Ephrussi de Rothschild in Saint-Jean-Cap-Ferrat

MedCruise Diary 2020

Seatrade Cruise Global, Miami
20-23 April



CLIA Cruise360, Vancouver
12-16 May



56th MedCruise GA, Palamós
26-29 May



Seatrade Cruise Med, Málaga
16-17 September



57th MedCruise GA, Málaga
18 September



International Cruise Summit,
1-2 December



Italian Cruise Day, Savona
TBA



MedCruise members

ALANYA
ASHDOD
AZORES
BALEARIC ISLANDS
BARCELONA
BASTIA/NORTH CORSICA
BURGAS
CABO VERDE PORTS
CANARIAN PORTS
CARTAGENA
CASTELLON
CENTRAL ADRIATIC SEA
CENTRAL-NORTHERN TYRRHENIAN SEA
CENTRAL TYRRHENIAN SEA
CEUTA
CONSTANTA
CORFU
COSTA BRAVA CRUISE PORTS
CYPRUS PORTS
DUBROVNIK, KORCULA
EASTERN LIGURIAN SEA
EASTERN SICILIAN SEA
EGYPTIAN PORTS
FRENCH RIVIERA PORTS
GIBRALTAR
GIOIA TAURO
HAIFA
HERAKLION
HUELVA
IGOUMENITSA
IONIAN SEA
ISTANBUL
KAVALA
KOPER
KOTOR
KUSADASI/BODRUM/ANTALYA
LEIXOES (Porto)

LISBON
LIVORNO 2000
MADEIRA PORTS
MALAGA
MARSEILLE
MONACO
MOTRIL-GRANADA
NORTH TYRRHENIAN SEA
ODESSA
PATRAS
PIRAEUS
PORTIMAO
PORTOFINO
RIJEKA
SARDINIAN SEA
SETE
SIBENIK
SOUDA/CHANIA
SOUTHERN ADRIATIC SEA
SPLIT
THE STRAIT
TANGIER
TARRAGONA
TENERIFE PORTS
THESSALONIKI
TOULON-VAR PROVENCE
TRABZON
TUNISIAN PORTS
VALENCIA
VALLETTA
VARNA
VENICE
VOLOS
WESTERN LIGURIAN SEA
WESTERN SICILIAN SEA
ZADAR

Associate members

ALGERIA CRUISE SERVICES
CEMAR
CEUTA TOURISM
COSTA BRAVA TOURISM BOARD
COUNCIL OF SANT CARLES DE LA RAPITA
COUNTY P. A. OF DUBROVNIK
CRUISE SERVICES MONACO
CYPRUS DEPUTY MINISTRY OF TOURISM
DP WORLD LIMASSOL
INTERCRUISES SHORESIDE & PORT SERVICES
KYRIAKIS TRAVEL S.A.
LA GOULETTE CRUISE TERMINAL
LANZAROTE TOURISM
MEDOV SRL
MH BLAND
MMS

PAN MARINE GROUP
PENINSULA TOURS
PEREZ Y CIA
PUERTOS DEL ESTADO
SALAMIS SHIPPING SERVICES
SAMER & CO SHIPPING
SCANDINAVIAN NEAR EAST AGENCY
SEAWAY SHIPPING & TOURIST SERVICES
TENERIFE TOURISM CORPORATION
TERMINAL NAPOLI SPA
TRAINOSE
TRANSCOMA CRUISES
TURA TURIZM
TURISME DE BARCELONA
TURKISH CHAMBER OF SHIPPING (TCS)
VAR PROVENCE CRUISE CLUB

Azores

2020 is a milestone year for the Azores, as 180,000 passengers are expected, on 177 cruise calls. There are also 20 maiden callers planned at the three ports of Ponta Delgada, Praia da Vitória and Horta.

A shore excursion to Lago do Fogo (Fire Lake) is a popular tour when calling at Ponta Delgada. The tour starts by travelling along the small villages along the south coastline, and up towards the volcanic mass of Fogo and admire the views of the 2nd highest mountain on the Island. At 575mtr lies one of the most beautiful green lakes on the Island, Fire Lake.

Half way back down the mountain you will find the lukewarm waterfall of Caldeira Velha,

where you can see amazing vegetation and secondary manifestations of volcanology.

The tour continues along the North coast with impressive views over the green landscape of the coast. Here you will find the oldest Tea garden in Europe, Chá Gorreana. You will learn how to make the tea by visiting the factory and museum, then relax with a cup of cha and a slice of homemade pineapple cake. After leaving the Tea Factory, there is a final stop at Sta Iria Belvedere where the North and West coast can be seen.

MedCruise contact: André Velho Cabral Moura
amoura@portosdosacores.pt



Barcelona



Barcelona Genuine Shops is a guided tour of the city's most inspirational shops that brings you into contact with the most genuine, unique and least-well known side of Barcelona: hand-crafted goods made by designers in Barcelona, gourmet produce, century-old shops, sustainable fashion... An experience that will let you enjoy Barcelona's most charming shops. The 3-hour tour is led by a professional guide and includes tastings, gifts and displays of different products and more than 70 discounts at shops.

Barcelona's architecture; Catalan gastronomy; Mount Montserrat Natural Park and Benedictine Abbey and wine region; Cardona, a medieval castle; and Stiges, Art Nouveau and bohemian life on the shores of the Mediterranean.

830 cruise calls are expected at port of Barcelona and approximately 3,200,000 passengers.

MedCruise contact: Mar Perez
mar.perez@portdebarcelona.cat

Burgas



Tourists visiting Burgas and the surrounding area have a lot to see; UNESCO listed city Nessebar; the ancient city of Sozopol; the ancient city of Aqua Khalide; Thermopolis near Burgas; Zheravna – a national architectural reserve; the ancient town of Deultum; and the newest tourist attraction – the island of St. Anastasia.

The monastery St. Anastasia Pharmacolitria (Healer) is the only insular cloister in Bulgaria part of which is still preserved today. The earliest evidence of the existence of the monastery dates to the 15th century. Over the years, it has been burned several times and attacked by pirates.

The cloister existed until 1923 when the monastery was turned into a prison. Since 2001, Saint Anastasia has the status of a cultural and historical landmark. The most romantic place in Burgas Bay – the Island of St. Anastasia offers miraculous herbs and potions in Lekarna, a monastery cell from the Middle Ages where you can spend the night, and restaurant with authentic local dishes from old recipes.

South of Burgas is Strandja mountain, situated in the Strandja Nature Park, which covers 116,000 hectares. In the park there are 5 nature reserves, 14 protected areas and many natural landmarks. Among the sights are the caves and springs along the Mladejka River, the Elenina Dupka cave near the village of Byala Voda, the cave of Maharata near the village of Kosti and the marble dome tombs in the Mishkova Niva and Propada areas. There are 54 species of mammals and 261 species of birds in the park. Strandja Nature Park is recognized as one of the most interesting oases of rare species and habitats on the Balkan Peninsula and in the European Union. The Nature Park team offers guides for various walking and eco-routes.

Mano Maritime's Crown Iris will visit in 2020, making a maiden call to Burgas.

MedCruise contact: Stoicho Dimov
st_dimov@port-burgas.com



Strandja

Cartagena



For 2020 port of Cartagena is expecting 160 cruise calls bringing 250,000 passengers. Twelve ships new to Cartagena will be calling including from 3 cruise lines making their first calls at Cartagena, Carnival Cruise Line, Ritz-Carlton Yacht Collection and TUI Cruises.

Finca Torrecillas is a private estate located in the Regional Park of El Valle-Carrascoy (Murcia). With an area of 100 hectares, it has a high landscape quality and high biodiversity. It is dedicated to ecotourism and is an excellent model of sustainable land management.

The area is covered mainly by dry-farming crops, such as centenary almond, olive and carob trees, that coexist with pine groves and scrublands. The wealth of the flora and fauna found here make it a privileged place, a feeding area for birds of prey, like the European eagle-owl (*Bubo bubo*), the golden eagle (*Aquila chrysaetos*), as well as different species of snakes, lizards and other reptiles.

In the baroque city of Lorca we find the Fortress of the Sun, an impressive medieval

castle from the XI century. The city was the frontier between the Christian kingdom and the Muslim world of Granada.

Archaeologists discovered in 2003 the Jewish quarter and the remains of a Mediaeval Jewish Synagogue, during the construction works of a hotel on the premises of the Castle of Lorca, a Castilian military fortress. The Synagogue is the only one known to exist in Spain, as it has never been used for other religions, making it a sacred and pilgrimage place for Jews around the world.

The Synagogue, which dates back to the 15th Century, is the most important building of the Jewish quarter. The building was illuminated with glass lamps that hung from all along the prayer room. It preserves the bottom floor, decorated in gothic style plasterwork, with remains of the plinth where the bimah was located, and where the Jews kept the Torah scrolls.

MedCruise contact: Hortensia Sanchez
hortensia@apc.es

Castellon

Culla is a beautiful medieval town in Castellón which has recently been named one of the most beautiful villages in Spain.

A town that surprises from the moment you set eyes on it. Walking through the streets of Culla is like walking through a town trapped in time, centuries ago.

The smell of firewood coming out of houses with stone facades and uphill streets forming a path en route to the castle. Culla offers travellers a route consisting of 15 places, where you will find detailed information of each point of interest on the route. That route takes you to the wall, at the foot of the castle or to the old hospital, always finding those magical corners that photographers will love.

Visiting Fanzara and its open-air museum of urban art is a great day trip from Castellón that offers travellers a different rural getaway.

Fanzara is a town in the interior of Castellón with 300 inhabitants, where houses are covered by more than a hundred pieces of graffiti and other samples of urban art. Several years ago, the fame of the murals of Fanzara and the MIAU Museum attracted many tourists.

2020 sees 5 cruise calls stopping at Castellón, from Marella Cruises, Oceania Cruises and new to Castellon, Phoenix Reisen.

MedCruise contact: Susana Soria
ssoria@fundacionportcastello.com



Central Adriatic Port Authority - Port of Ancona

Port of Ancona is the gateway to discover the Marche Region and Central Italy. Located in a natural harbour where the Doric sailors landed 24 centuries ago, the ruins of the Roman port, the Trajan Arch, the medieval walls and the buildings designed by the Vanvitelli welcome cruise passengers to Ancona.

Located between two hills, Urbino was once a simple village, whose historic centre became the Cradle of the Renaissance. Urbino experienced an extraordinary cultural flowering in the 15th century, attracting artists and scholars from all over Italy and influencing cultural developments elsewhere in Europe. The architect was Federico Da Montefeltro, making Urbino's Ducal Palace more than a court: it was a lively cultural centre, temple of beauty, harmony, art and

science.

For nature-lovers, the Frasassi Cave complex, located in the inland area of Marche Region, is one of the most fascinating subterranean passageways, where stalactites and stalagmites create environments of incredible beauty. The path reserved for tourist visits is equipped to provide safe and smooth access to people of all ages.

Port of Ancona will welcome 46 cruise calls in 2020 and five ships will be maiden callers: Seven Seas Cruises' Seven Seas Splendor; Saga Cruises' Spirit of Discovery; Azamara Cruises' Azamara Quest and Azamara Journey; and Marella Cruises' Marella Discovery 2.

MedCruise contact: Guido Vettorel
vettorel@porto.ancona.it



Ceuta

The Desnarigado is a tourist boat with capacity for 40 passengers which makes a daily journey along the coast of Ceuta. The tour lasts approximately 45 minutes and the itinerary begins at the España Dock through the Royal Moat towards the South Bay, the Ribera Beach, Fuente Caballos, the Painter's Battery, Cala and Fortín del Sarchal (former women's prison), Camino de Ronda (old Roman road), The Marabout de Sidi Abbas, Desnarigado Hold with the Desnarigado Castle and the cliffs of Hacho Mount.

The Monumental Complex of the Royal Walls was the borderline of ancient Ceuta. If you cross

the Walls you will find the Royal Moat, navigable since the era of Portuguese rule. The oldest fortresses of the Walls are found to the east of this Moat: The Mallorquines Fortress (where the city's tourist office is located) and the Fortresses of Bandera and Coraza Alta y su Caballero.

There are two audio visual shows about the history of the Walls and the city of Ceuta in the latter building and in Saint Paul's Fortress, with free admission, along with a museum with travelling exhibitions in Saint Ignatius' Ravelin.

MedCruise contact: Victor M. Jimenez
victor@puertoceuta.com



Constanta



Constanta's best-known square (and meeting place) honours the first Roman major poet, Ovid (Publius Ovidius Naso) who was exiled to Tomis by Roman Emperor Augustus in the year 8 AD. Ovid's bronze statue, designed by Italian sculptor Ettore Ferrari in 1887 adorns the square named after him. An exact replica of the statue can be found in the town of Sulmona (Italy), the birth place of the poet.

The Genoese lighthouse was built around 1300 by the Genoese who traded at the port, to

guide ships at sea from a range of about two nautical miles out to the (then) small port of Constanta. It was rebuilt between 1858- 1860 by French - Armenian engineer Artin Aslan, by order of the British-owned Danube and Black Sea Railway Company, to honour the Genoese merchants who established a flourishing sea trade community.

Built in 1910 by King Carol I, the Great Mahmudiye Mosque is the seat of the Mufti, the spiritual leader of the

55,000 Muslims who live along the coast of the Dobrogea region.

The building combines Byzantine and Romanian architectural elements, making it one of the most distinctive mosques in the area.

MedCruise contact: Teodor Patrichi
tpatrichi@constantza-port.ro
MedCruise contact: Cristina Tanase
ctanase@constantza-port.ro

Cyprus ports



Limassol port is expecting over 110 cruise calls in 2020 bringing in 140,000 passengers, compared to Larnaca port which is expecting 17 calls bringing in 25,500 passengers.

A popular shore excursion from the port of Limassol is to head north towards the Troodos mountains and discover the hinterland of Cyprus, with its picturesque villages, monasteries, wine vineyards, boutique wineries, great scenery and local traditions at Lefkara village. For those interested to discover the city, they can visit the historic centre with its beautiful buildings and local cafes, stroll on the sea promenade and visit the old Limassol Port with its cafes and restaurants as well as nearby Limassol Marina.

A unique and fun experience to meet and ride the friendly Cyprus donkeys in their own environment is a great idea for all the family. Meet the friendly donkeys and enjoy a ride through the peaceful Paphos countryside before arriving at the abandoned 14th Century Monastery, Panayia tou Sindi, which was recently restored by UNESCO and recognised as a World Cultural Heritage monument. The tour takes you back to the farm where a typical BBQ meal accompanied by home cooked specialties will be waiting.

The main attractions for Larnaca port are the sea front, the Finikoudes promenade and the excursions to the traditional Lefkara village, famous for the handmade embroideries of its residents.

MedCruise contact: Anthi Kliridou
antkliridou@cpa.gov.cy
DP World Limassol contact:
Lazaros Charalambous



Photo credit: DP World Limassol

Port System Authority of the Eastern Sicilian Sea

From Catania it is possible to go on the city tour of Piazza Armerina, which is a new destination offered to passengers. The tour includes a visit to the city of Piazza Armerina and the Roman Villa, a UNESCO World Heritage Site since 1997.

This tour is offered by bus or by private car and starts from the Port of Catania and reaches the Roman Villa, 4km from the city centre of Piazza Armerina, in one hour. Once passengers arrive, they can visit the most beautiful villa built by Romans in the 4th century. Headsets and a tour guide will be provided.

Guests will be offered tastings of local food as red wine, olive oil, bread, salty pistachio pesto, sweat creams, almonds, Modica chocolate and chocolate liquor.

After lunch they will start the medieval tour of the city centre, from the Duomo square to the Pinacoteca and Commenda dei Cavalieri di Malta. Passengers can listen to medieval music and assist in the role play of a fight between warriors in medieval costumes, like at the International event Palio dei Normanni.

Finally, guests will have one hour for shopping at the big Sicilian Outlet Village before returning to the port.

From 2020, an eco-tour will be on offer to cruise passengers. As the Catania city centre is not that far from the port, there is the chance to offer ebikes to enjoy a different way of seeing the main attractions of Catania and to drive along the coast towards the cities of Acicastello and Acitrezza.

Cruise traffic is increasing in Catania, 265,000 passengers are forecast to visit in 2020, compared to 209,000 in 2019, an increase of 27%.

MedCruise contact: Ilaria Tomasi
tomasi@adspmaresiciliaorientale.it



Gibraltar



Gibraltar Panoramic Tour and Wine Tasting is a new shore excursion on offer from the port. This tour goes around The Rock with a brief stop at Europa Point, the southernmost point of Gibraltar, where the views of North Africa across the Strait of Gibraltar are spectacular. A stop is then made at Chatham Counterguard to experience one of the many vaults along this historical wall, which has now been transformed into lively wine bars and restaurants, to be able to sample a selection of wines and nibbles.

An active tour available is a Guided Stand Up Paddle Safari. Gibraltar is an incredible place for Stand Up Paddling (SUP), and every outing delivers a unique experience. Take a trip to Sandy Bay, one of the east side beaches and take part in a relaxed SUP in the stunning sheltered bay. The safari provides ideal conditions to view the spectacular Rock monolith which dominates the landscape as well as exploring the beautiful eastside coves and cliffs.

Walking tours of the Gibraltar Nature Reserve Upper Rock are currently available to cruise companies. In addition, the Gibraltar Nature Reserve has a variety of nature trails available. There are also opportunities to see the Gorham's Cave complex, a UNESCO World Heritage Site. Tours are also available to Lower St Michael's Cave.

206 cruise calls are expected in 2020, with 328,424 passengers. Eight ships are maiden callers at port of Gibraltar; P&O Cruises Iona, Holland America Line's Zuiderdam, Carnival Cruise Line's Carnival Legend, Silversea's Silver Moon, Ponant Cruises' Le Jacques Cartier, Princess Cruises' Island Princess, AIDA Cruises' AIDAmira and Costa Crociere's Costa Fascinosa.

MedCruise contact: Suyenne Catania
suyenne.catania@gibraltar.gov.gi



Egyptian ports

Alexandria port is due to receive 38 cruise calls in 2020, this is a huge increase on last year when only 8 ships called. The same level of increased cruise traffic is true for all Egyptian cruise ports.

Alexandria is Egypt's second city, offering an array of interesting sites from the Greco-Roman Period of Egypt's history, considered one of the Seven Wonders of the Middle Ages.

Due to its favourable location and present infrastructure, Alexandria marina has a high potential for cruise tourism, sporting activities and entertainment, and tourist events. The

capacity of the port allows the arrangement of different events serving cruising industry, shipping and ports' technology.

Alexandria Port Authority has developed investment projects regarding the modernization of Alexandria marina, intending to grow from a large to a mega port in order to create a safer port and also increase its functionality and services.

MedCruise contact: Karim Mohamed
Mahmoud Youssef
karimyosef58@yahoo.com



Haifa



Haifa Port is experiencing an immense increase in ship calls, tourists and passengers in international cruises. In tourism, the port has experienced a 650% increase from 27,800 tourists in 2018 to 181,000 registered for 2021. In 2020 Haifa Port will have 153 cruise calls from 25 cruise brands bringing in 91,275 passengers. 199,400 passengers will turn around in Haifa in 2020. Princess Cruises will call Haifa for the first time in ten years.

With regards to eco-tours on offer from port of Haifa, some cruise lines offer a 'Plant a Tree' tour, which enables guests to make their mark and help restore nature in the Holy Land by participating in a reforestation project. Trees play a vital role in maintaining a healthy atmosphere and Israel is the only country where the number of trees grows from year to year. After planting the tree, guests travel to witness how local children learn to be environmentally aware in a Kibbutz Educational Greenhouse.

The five must-see attraction available from

port of Haifa are; Jerusalem and Bethlehem; Nazareth & Sea of Galilee; Old Acre; Caesarea; and The Baha'i Gardens and Mount Carmel.

The Jordan River Kayaking and Jeep Tour is the ultimate Israeli outdoor experience in the Golan and Galilee and awaits the adventurous visitor, 60-75 min. from the port. It begins with an off-road 4X4 tour that splashes through streams and rolls through valleys of the Golan, where ancient archaeology sites are embedded into the scenery and panoramic views of the sparkling Sea of Galilee are sure to take your breath away. For lunch, refuel with a big barbeque accompanied by the variety of salads that the Middle East is known for. Top it off in true Israeli style with juicy red watermelons, before getting in a kayak or raft to experience the iconic Jordan River in a unique and incredibly fun, unforgettable way.

MedCruise contacts: Zohar Rom
zohar.rom@haifaport.co.il

Huelva



The expectations for cruise traffic for the Port of Huelva this year are higher than those of last year, with a significant increase with respect to the number of passengers.

At the end of the Middle Ages, the port of Huelva experienced a period of great splendour. Christopher Columbus' first expedition set sail for the New World from the dock of Palos de la Frontera in 1492. The Columbus Places have been declared a historic artistic heritage.

The Monastery of La Rábida, at which location the discoverer Christopher Columbus planned

this trip, safe in this refuge belonging to the Franciscan order. Built during the 14th and 15th centuries its Gothic-Mudejar style contrasts with the frescoes of painter Vázquez Díaz and is a key to understanding the Discovery that would change our perception of the world.

The Caravels Wharf, replicas of the three ships that discovered America: the caravels Pinta and Niña, and the vessel Santa Maria. All this in a unique

natural setting that will make you feel a part of that glorious adventure.

At the mouth of the Guadiana River, the beaches of Isla Canela and Punta del Moral form the shoreline of Ayamonte, the monumental and secluded capital of the marquisate. In Isla Cristina, the Playa Central beach near the town centre rivals the beauty of Playa de Punta del Caimán and the beaches of El Hoyo and La Casita Azul near La Redondela.

MedCruise contact: Manuel Vega
mvega@puertohuelva.com

Heraklion



Heraklion port is expecting 212 cruise calls in 2020, bringing in 360,792 passengers & seven ships will be maiden callers to the Greek port.

The five must-see destinations available from Heraklion are: Classic but unique Minoan civilisation, the best example is the 4,000 year-old ancient palace of Knossos and the Archaeological Museum of Heraklion; Byzantine church of Panagia Kera Kritsa, dating from the 13th century with frescoes; Gortys ancient city where the oldest written law code of Europe from 5th century BC was made; Rethymno city and nearby Arkadi monastery; Old traditional villages with potters.

Heraklion boasts many canyons, most of which cross the ranges of Psiloritis and Asterousia. Asterousia has wonderful hiking canyons, the most important of which are Agiofarago, Martsalo and Trafoulas. However, the most famous gorge is the canyon Gafaris at Psiloritis, crossing the magnificent oak forest of Rouvas. Other canyons of Psiloritis are the gorge of Kroussonas, through which passes the Minoan path to the Idaean Cave, the gorge Vromonero, the gorge Vorizano and the two small canyons of Asites (Saint Charalambos and Saint Anthony).

MedCruise contact: Kyriaki Kampana
kkampana@portheraklion.gr



Igoumenitsa

The Archaeological site, Dodoni lies 22km southeast of Ioannina, 63km from Igoumenitsa Port and is definitely the most remarkable ancient site in Epirus. As a sanctuary it dates back to 2500 BC and its oracle was the oldest and most important in all ancient Greece.

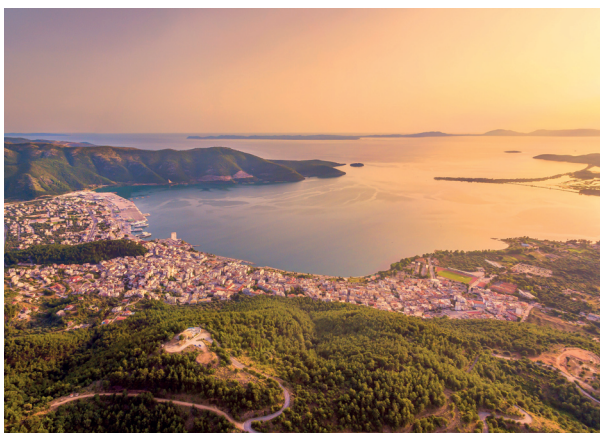
The building of the first structures date back to the 4th Century BC, but most of the ruins we see today are from the monumental additions that were built in the early 3rd Century BC to expand the sanctuary and its functions. This included the largest ancient theatre in Greece, with 18,000 seats, now the site's most recognizable feature. The sanctuary was first destroyed in 219 BC by Aetolians and never regained its original stature. It was later restored only to be destroyed again in 167 BC by Romans and during the 1st Century BC reign of Augustus, the theatre was converted into a gladiator arena. Today, this magnificent structure is the best preserved ancient theatre in Greece and is still used for summer drama festivals.

Surrounding the city of Ioannina is one of the most fascinating regions in Greece. Rich in cultural and historic heritage and set in dramatic landscapes, it is also one of the few regions where rural life remained so faithful to traditional

ways.

Tucked away in the mountains and valleys, there are scores of villages that can only be described as true gems, both architecturally and culturally. Among them is the stately village of Syrrako, the sweet wine producing Zitsa of Lord Byron fame and the Joumerka village cluster of Kastanochoria. There is something magical about the way these charming stone built settlements integrate with their surroundings, forming a perfect bond between nature and human habitation.

MedCruise contact: Anna Pyroti
apiroti@olig.gr



Istanbul



For 2020, 75 calls have been received and a further 180 for 2021 with most cruise lines using Galataport Istanbul as the main port. Some of the lines that have made reservations at the port are Carnival Corporation, Royal Caribbean Cruises, Celebrity Cruises, Azamara, Viking Cruises, Holland America Cruise Line, Regent Seven Seas Cruises, Celestial Cruises, Le Ponant, Silversea Cruises, Fred Olsen Cruises, Marella Cruises, Wind Star Cruises, Princess Cruises, Costa, Aida Cruises and MSC among others. Galataport Istanbul will welcome its first ship on April 5, 2020.

Istanbul is a unique and marquee destination because the city is timeless. It has been the capital of 3 great empires from Roman to Byzantine and Ottoman. The Topkapi Palace, the Blue Mosque, St. Sophia, the Grand Bazaar or the Basilica Cisterns are just few sites to be visited when visiting Istanbul. The variety of cultures, religions and history can be felt in every corner of this vibrant city.

Galataport is designed to be the new gastronomy centre of Istanbul. It will encompass nearly 250 retail and f&b units, where nearly 35% will be dedicated to culinary by the coastline and around the small streets.

Galataport Istanbul will have one of the largest recreational area of the city, crowned by the long hidden beautiful and renovated Tophane Clock Tower dating back to the 19th century. Hosting the Istanbul Modern Museum (first modern and contemporary arts museum of Turkey) and Istanbul Painting and Sculpture Museum of Mimar Sinan Fine Arts University (One of the oldest academic institutions of Turkey in fine arts) within its premises, Turkey's best practices in contemporary arts, Galataport will become the new arts and culture centre of Istanbul. The Tophane Square, whose landscape design is part of the project, will once again become a major square of Istanbul. This area will mark the first museum square of Istanbul and become a living centre with various activities planned to run throughout the year.

MedCruise contact: Figen Ayan
fayan@galataportistanbul.com



Port Network Authority of the Ionian Sea - Port of Taranto



Located in Puglia in the heel of the boot, the Ionian port of Taranto answers the challenging quest for alternative destinations from more demanding travellers. In this corner of the Mediterranean cruisers can live off-the-beaten-path experiences discovering cultural peculiarities, savouring exceptional food

and just recharging from routine. This year has a positive outlook for the port of Taranto with more than 30% growth in comparison with 2019 and more than 14,400 transit passengers expected. The cruise season will start off with maiden calls by TUI Cruises' Mein Schiff Herz, Marella Cruises' Marella Explorer and Voyages to Antiquity's Aegean Odyssey.

In the National Archeological Museum of Taranto travellers will have the chance to explore five thousand years of culture. Guests will experience participating in a banquet in ancient Greece using reproductions of tableware

and playing the game of kottabos. Finally they will get to know local traditions by taking cooking classes of orecchiette (ear-shaped pasta).

MedCruise contact: Silvia Coppolino
silvia.coppolino@port.taranto.it

Lisbon

The Portuguese port of Lisbon is expecting 375 cruise calls in 2020, bringing in 675,000 passengers. There are to be 20 first-time callers including Celebrity Cruises' Celebrity Apex; Norwegian Cruise Line's Norwegian Escape; Princess Cruises' Regal Princess; Seabourn Cruise Line's Seabourn Encore; and Regent Seven Sea's Seven Seas Splendor; Ritz Carlton Yacht Club's Evrima and P&O Cruises' Iona. These ships will be greeted with a special welcoming ceremony.

A great tour for all the family is a trip to the Aquarium, the 'Lisbon and Aquarium' tour begins with a panoramic coach tour that introduces visitors to the most interesting parts of Lisbon, next travelling to the Baixa district, which was entirely rebuilt under the supervision of the Marquess of Pombal following the earthquake of 1755.



Travel along the River Tago until you arrive at the Parque das Nações, the area built to host the Universal Exhibition in 1998 and be fascinated by the beauty of the park with its highly modern buildings, masterpieces by some of the greatest names in contemporary architecture.

Finally, visit the Oceanarium, home to over 10,000 animal species and more than 350 plant varieties. The visit is fun and fascinating for kids and adults alike, an opportunity to learn more about the various marine ecosystems faithfully reproduced here. The central tank, which presents the various life forms that populate all the oceans of the planet in over 5,000 m3 of water, is truly unmissable.

A new tour from port of Lisbon is 'Hiking from Praia da Adraga to Cape Roca'.

Hiking trails are an excellent way of getting to know the natural and cultural heritage of Sintra and its surrounds. Take the Atlantic Path Route, Cabo da Roca is the starting point for this trail. The route covers the cliffs on the coastal area, passing by spectacular viewpoints such as Pedra de Alvidrar and Buraco do Fojo, on the southern slope of Praia da Adraga. Not being a trail with steep drops, it includes passing through Praia da Adraga and Praia Grande.

MedCruise contact: Ana Lourenco
alourenco@portodelisboa.pt

Porto di Livorno 2000

Livorno is the closest port and destination for the most famous art and historical cities in Tuscany: Florence only 60 minutes far, Lucca only 40 minutes, Pisa only 20 and Siena only 90 minutes.

By car or by bus cruise guests can visit the magnificence of Italian art and historical monuments tasting Tuscan flavors, food and wine. The world most renowned wineries are located in Bolgheri an historical village reachable by car, taxi or bus in 40 minutes. The small village deserves itself a visit and the guide explains the history of Bolgheri giving information about the XIXth century Italian poet Carducci family.

A family dedicated Tour for multi-generations is the visit to Collodi (Lucca province - one hour from Livorno) and to the Pinocchio Park. Pinocchio, the well-known Walt Disney character is an original creation by Carlo Venturini - renamed Carlo Collodi - from his birth place, a XIXth century Italian writer. The Pinocchio Park is built like a surprising itinerary: it starts by two sculptures condensing the significance of Pinocchio's story: the Emilio Greco's monument 'Pinocchio and the blue-hair fairy' and Venturino

Venturi's Squares of Mosaics where, both on the walls and on the pavement, scenes from the story of Pinocchio are recreated.

It is a Journey on stages, with sculptures, buildings and green areas where the adult and the child interact together to evoke Pinocchio's adventures, through the masterpieces of great XXth century artists, like Pietro Consagra's sculptures and Zanuso's "Big Shark".

In 2020 Livorno is expecting 378 calls and 900,000 passengers of which about 15,000 are embarking and disembarking.

MedCruise contact: Serena Veroni
apiroti@olig.gr



Koper



Koper port had a milestone year in 2019, receiving a record-breaking 115,000 passengers. The forecasts for 2020 and 2021 look to be records too with a 30% increase in traffic. 2020 also sees the 10-year anniversary of Azamara Cruises, where to celebrate Azamara Quest, Azamara Journey, and Azamara Pursuit will gather in Koper in October for a special event.

The Slovenian Coast and Farmer's Market offers a magnificent journey to the countryside, where lies the traditional Istrian village of Padna. The community comes together with their love of local life and lifestyle, handicrafts, and traditional recipes. Padna village is a connected local community which gains a lot from cruise visitors, the residents are engaged in promoting their work and passion, which always evokes nostalgia for those entering the village. Handcrafters and housewives prepare local delicacies - from prosciutto to pies to local wine. Organic souvenirs made from lavender, fresh herbs and natural cosmetics are available as well. Guests are accompanied by a local musician, who is always ready to play local songs and folk melodies.

Another popular tour from port of Koper is a trip to the Lipica Stud Farm with a carriage ride and picnic style lunch. Historical Lipica Stud Farm is not known only for magnificent white Lipizzaner horses, but also for some unique and memorable experiences. Lipica Estate is surrounded by beautiful green scenery, which is perfect for an open air picnic. Guests firstly visit the stud farm where they admire the stallions and the history of the farm, before being taken by vintage carriage, drawn by Lipizzaner horses to their very own lunch location. The picnic area, rustically decorated with piles of hay as seats surrounding a wooden table full of local Karst delicacies, such as prosciutto, local cheeses, Karst rolled dumplings, wine from nearby vineyards and other homemade beverages.

MedCruise contact: Bojan Babic
bojan.babic@luka-kp.si

Madeira ports



2020 sees 299 cruise calls to the ports of Funchal and Porto Santo bringing 575,000 passengers. Fourteen ships will be maiden callers to the ports.

The five must-see attractions from the port of Funchal are; the Levada Walks; the Botanical Garden; Monte, with its church, Tropical Garden and Toboggan Ride; the typical fishermen's village of Câmara de Lobos; and Paul da Serra (upland between the mountains).

Paul da Serra, 1,300-1,500mtr above sea level is a tourist attraction located on the central west part of the island, the flattest place in all of Madeira with stunning views over the green mountains and valleys. On a clear day it's possible to observe the south and the north sea.

It is also the starting point of many paths and Levada walks which connect you to different locations on the Island such as Rabaçal, Risco, 25 Fontes, Pico Ruivo, Ribeira do Alecrim,

Lombo do Mouro and Bica da Cana all passing through the Laurissilva forest.

Within the city of Funchal are all year round festivities which you can enjoy with your family or your friends such as: Carnival; Flower Festival, Wine Festival, Nature Festival, Christmas and New Year's Eve.

MedCruise contact: Patricia Bairrada
comercial@apram.pt

Motril-Granada

Easter is one of the most interesting times in Motril. Easter in Andalusia is not simply a religious event, these rituals are an integral part of the folklore.

The date is different every year: Easter Sunday must be the first Sunday after the spring equinox, never before 22 March and never after 25 April. Easter week begins on Palm Sunday, marking Christ's entry into Jerusalem, and ends a week later, on Easter Sunday, with the procession of the Resurrected Christ.

The visual impact of these rituals is undeniable, with the silhouette of the pointed hoods and elaborate combs worn by people in the processions, and the figures of the different images reflected by thousands of candles in streets and façades under the attentive gaze of local people, many believers and sightseers.

Spectacular thrones made of hardwood and precious metals and laden with flowers, embroidery and candelabras: the crafts of the guilds and

brotherhoods, popular art in its purest form, are carried through the street.

Take a tour of the city's main churches and religious sites, confraternities and brotherhoods. This wonderful and exciting experience, combining artistic heritage and picturesque local traditions, is led by a professional guide and assisted by an English and/or French interpreter.

Port of Motril-Granada is expecting 15 cruise calls in 2020, bringing 10,203 passengers.

MedCruise contact: Lorenzo Vera Franco
lvera@motrilport.com



Marseille



Marseille is France's leading cruise port with 2 million cruise passengers and more than 500 calls expected in 2020, which represents an 8% passenger growth compared to 2019. In 2020, two LNG ships will operate in Marseille, the AIDAnova and the Costa Smeralda, and 14 new ships will call at Marseille Provence.

Lying between Arles and Avignon, The Alpilles are a limestone range 30km long and 10km wide forms the last upland area before the fascinating and other-worldly Camargue. Covered by garrigue, olive and almond groves, the Alpilles, although arid, exude a particular atmosphere.

Today a Regional Natural Park, the Alpilles are blessed with an exceptional heritage that can be explored via the meandering roads that connect the 16 towns scattered over this typically Mediterranean landscape, with special mentions for Les-Baux-de-Provence, Saint-Rémy-de-Provence and Eygalières.

For a tour for all the family head to Marseille and Aix-en-Provence. In the morning, depart for an outside morning visit of the Old Port, while heading to the History Museum to explore Marseille's history as trading port and melting pot since Antiquity.

After the History Museum, departure to If Island & Castle by sea shuttle. Visit the island and the castle, myth and history combine as you visit Edmond Dantes and Faria cells. The fort was built initially to protect Marseille's harbour entrance, it also was used as a prison from the 16th to the 19th century.

In the afternoon, depart for Aix-en-Provence where you will enjoy a 3 hour e-bike ride in the Ste Victoire mountain. Photos stops will be done, to catch scenic pictures and enjoy the panoramas. If time permits, end the day by a walking tour of the town to discover its urban and architectural wealth and go shopping.

MedCruise contact: Hélène Lebas
hlebas@marseille-cruise.com



Piraeus

There has been an increase in the number of ships and arrivals that have been scheduled to call Piraeus port for 2020 compared to 2019, with the total number of calls well over 750, including approximately 15 new ships for 2020.

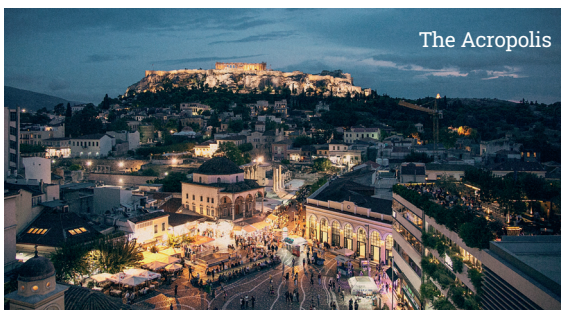
Visiting Athens would be missing a critical piece of the city without a trip to the Acropolis. You'll trek the 490ft up into the Plaka District along narrow, paved streets surrounded by aromatic olive trees. At the Acropolis, the world-famous Parthenon stands apart from any other structure in the modern or ancient world. Make it a point to visit the Acropolis Museum, a comprehensive catalogue of Greek art, culture, and philosophy dating back to the 5th century BC.

Athens is known for a hilly, rolling landscape. Its highest point is Mount Lycabettus, which ascends over 900ft high. Start by taking a cable car toward the top of the mountain. Then, climb around 100 steps from the cable car station to the summit. There, you'll find breathtaking panoramic views not only of the metropolis of Athens but also the port of Piraeus and its many docked

ships.

If you would rather take part in an active excursion, you can join the Athens bike tour. On this exhilarating ride you'll explore Ancient Athens on two wheels while traveling via bicycle past the city's most historic landmarks. On your dynamic pedalling journey, you'll travel past the legendary Keramikos cemetery, the Ancient Agora marketplace, the marble Tower of Winds, the Arch of Hadrian and the colossal Temple of Olympian Zeus before winding your way through Plaka, the oldest section of the city.

MedCruise contact: Theodora Riga
commercial@olp.gr



The Acropolis

Port Authority of North Tyrrhenian Sea

The Archaeological Museum of the Territory of Populonia, overlooks the sea in the heart of the historical centre of Piombino.

Not to be missed is the amphora of Baratti, a silver masterpiece from the sea, which is the symbol of the museum and the beauty of the land. A new multi-sensory trail and the introduction of three tactile-visual-auditory stations allow everyone to understand and enjoy the three symbols of the ancient history of Populonia: the Tomb of the Carri (the best preserved Etruscan tomb in Baratti and Populonia archaeological Park), the Roman mosaic named "of the Fish", and the silver amphora of Baratti, three masterpieces of the Late Antiquity Age. A new, simple and appealing way to bring the story to life, even for the youngest and for those with no archaeological knowledge.

Diving in Elba Island is possible at different areas of the north side of the island with several bases, equipped with facilities, logistics and wonderful staff able to provide the best service



Portoferraio

and every comfort. Near Portoferraio, where cruise vessels call, several hotels/camping have private dock, perfect for diving (daily diving, all level diving courses, free diving courses, snorkelling and diving courses for children). The strategic position of diving close to the port of Portoferraio offers the possibility to leave the car on the mainland and use the free transfer services from the port (subject to reservation and availability).

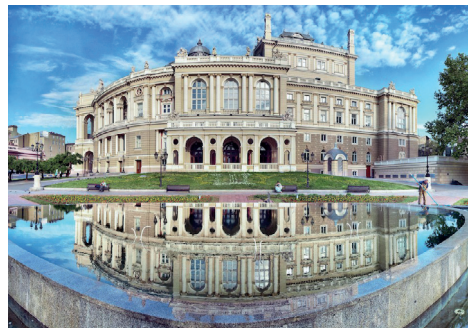
Port Authority of North Tyrrhenian Sea is made up of the ports of Livorno, Portoferraio and Piombino. For 2020 Livorno is forecast to receive 377 cruise calls bringing in 841,866 passengers, Portoferraio to receive 82 calls and 45,350 passengers and Piombino to receive 5 calls bringing in 6,500 passengers.

MedCruise contact: Francesca Morucci
f.morucci@portaltotirreno.it



Piombino

Odessa



After more than two years of absence of international cruise shipping in the Black Sea Region, in late October 2019 port of Odessa was visited by Phoenix Reisen's Amera. In 2020, 11 cruise ships will be calling at port of Odessa, bringing 6,000 passengers.

Odessa Passenger Terminal is located in the historical centre of Odessa city, near the main sites of the city; Potemkin Stairs, The Monument to Duke de Richelieu, Deribasovskaya Street and the Opera and Ballet Theatre. It takes about 15 minutes on foot to reach the heart of Odessa city from the port.

On a full day tour from Odessa you can reach the Southern Bug, known for its turbulent rapids. This is an extraordinarily beautiful river: quiet in places, stormy in places, with rocky shores immersed in the greenery of trees and grasses. Granite cliffs along the banks, amazing canyons and islands, all this makes a rest on the Southern Bug especially attractive.

Take the tour of the Southern Bug on tourist kayaks under the guidance of experienced instructors who will help to deal with equipment, and the techniques of boat control. The tour is designed for all tourists and does not require special training. An exciting adventure with a surge of adrenaline delivers many joyful and memorable moments.

Secrets of the Odessa Catacombs is a dive under the ground to a depth of 25-30mtr. In several districts of the city, locations for visits to the underground museum and a look at the historical features of these places is possible. The Labyrinth of Catacombs, which threads about 600 miles under the city and its environs were natural hideouts for World War II resistance forces during the Nazi occupation. Passengers are escorted on a fascinating underground walk through 500 yards of the massive maze that baffled the occupation forces. To bring the passages to life, actors dressed as guerillas will perform a 10-15 minute concert for the guests.

MedCruise contact: Julia Strikh
syi@ods.uspa.gov.ua



Rijeka

City of Rijeka, which is the current European Capital of Culture, is expecting 40 cruise ships with more than 70,000 passengers. Twelve cruise lines with 11 inaugural cruise ships calls will visit Rijeka this year.

Gorski Kotar is a green oasis where at every turn you can notice the harmonious co-existence of man and nature. With its clear lakes, sunny meadows, numerous water sources, streams, rivers, and wondrous hills and mountains, Gorski Kotar is an ideal destination for memorable excursions and holidays. Excursion includes a visit of national park Risnjak and Park Forest Golubinjak. Just fifteen kilometers from the sea, 300 – 1500mtr above sea level and spread out



over 6,400 ha, lies National Park Risnjak. Its unique topography and rich animal and plant life have earned it the status of an area of great natural value.

A tour to Istria lasts 8 hours and is a feast for the eyes. Its streams flow to the sea through deep valleys and gullies which bring to mind the ancient local myths about giants. Rolling hills overlook the fields and valleys with little towns perched on the peaks, recalling some old paintings. The view is splendid: white-topped mountains, lush wheat fields, plateaux, valleys, vineyards and olive groves on hillsides, and, finally the sea. Pula is to Croatia what Rome is to Italy. There is no hiding the city's main attraction – an enormous Roman amphitheatre. It is 1st-century amphitheatre, overlooking the harbour northeast of the old town. Built entirely from local limestone, the amphitheatre, known locally as the Arena, designed to host gladiatorial contests, with seating for up to 20,000 spectators.

MedCruise contact: Snijezana Papes
snijezana.papes@portauthority.hr

Portofino

A popular active tour from port of Portofino is hiking in the Portofino Regional Park: an area rich in biodiversity, a paradise of Mediterranean vegetation that can be explored hiking an extensive network of trails. Hiking is for sure one of the best things to do in Portofino: it is possible to hike all year round on the magnificent coastal paths that run like balconies overlooking the coast or in the forests of the interior and the higher areas that provide shade during the hotter months. It's a walk in a unique environment both for the flora and for the geological conformation.

A new tour available is a day trip to la

Portofinese, a hilltop eco-farm, where they produce honey, cold pressed olive-oil, wine and craft beer in the land that folds between the mountains and the sea. Visitors can visit the vineyard, olive grove and the apiary, have a gourmet picnic of locally grown produce and savour the local limited production white wine.

68 cruise calls are expected at port of Portofino in 2020, bringing about 50,000 passengers.

MedCruise contact: Giorgia Collalti
g.collalti@marinadipotofino.com



Port Network Authority of the Sardinian Sea



The Port Network Authority of the Sardinian Sea is made up of the ports of Cagliari, Oristano, Olbia, Porto Torres, and Golfo Aranci.

From the port of Oristano it is possible to visit the Museum of Constantino Nivola, a famous artist who lived between Sardinia and New York. The Nivola Museum in Orani is an institution devoted to the work of Costantino Nivola within the larger context of contemporary art, landscape and living traditions. The museum was established in 1994, a few years after the death of Nivola. The permanent collection holds more than two hundred sculptures, paintings and drawings by Nivola, who played a unique role in 20th century modernism as an artist who worked closely with architects, realising more than 20 public works in New York city.

From Oristano there is a tour to the Su Gologone, an experience hotel only 1.5 hour drive from the port. On this site there are interactive workshops open to guests that concern the culinary sector, the botanical sector and the craft sector. This tour is open to family groups.

Also from Oristano is a fantastic tour of the Sorgenti of Sugologone, where it is possible to rent kayaks directly from the Sorgenti of Su Gologone park, where you can set off on excursions in the canyon created by the Cedrino river. The excursions can last half a day or a full day.

MedCruise contact: Valeria Mangiarotti
mangiarotti@adspmaredisardegna.it



Port Authority of the Strait of Messina

The year 2020 will see an increase in cruise traffic to the port of Messina. 181 cruise calls are forecast, an increase of 6.5% from 2019, bringing in 486,318 passengers, an increase of 15%. New callers will include MSC Cruises' MSC Grandiosa, Princess Cruises' Enchanted Princess, Viking Ocean Cruises' Viking Jupiter, and Disney Cruise Line's Disney Magic.

The Port Authority also now manages the port of Reggio Calabria, on the other side of the Strait of Messina. You can discover Reggio Calabria and its cultural heritage ambling through the streets of the historic centre. One attraction is the National Archaeological Museum where the Greek Riace Bronzes are housed. Archaeological remains of Hellenistic walls and Roman baths have been excavated along the promenade. In case you need refreshment, savour a semi-frozen granita made of fresh fruits in an ice cream cone. Walking uphill you will reach Corso Garibaldi, the main shopping road, here you will find beautiful Liberty buildings, the Municipal Theater with the Town Art Gallery Pinacoteca Civica, admire the underground archaeological excavations of Piazza Italia, amble to the Piazza Duomo with the Cathedral and the Diocesan Museum, continue uphill to the

Piazza Castello to discover the Aragonese Castle and the nearby Church of the Optimates.

A cooking class at Tenuta Rasocolmo will allow guests to discover the traditional preparations of Sicilian cuisine with the guidance of our chef. Guests will be able to prepare the dishes suggested by the chef under his supervision and then enjoy them paired with our wines. Cruise passengers can visit to the vineyard, olive grove and the family farmhouse; they can prepare and taste appetizers; two first courses and a sweet-pairing of 3 wines.

MedCruise contact: Cristiana Laura
laura@porto.messina.it



Sibenik



Sibenik expects 100 cruise calls in 2020, bringing around 32,000 passengers. The port is to welcome 4 maiden callers; Princess Cruises' Sea Princess; Club Med's Club Med 2; and Silversea Cruises' Silver Shadow and Silver Moon.

Primošten is located about 27km from Sibenik, it has the atmosphere and all the architectural features of a medieval Mediterranean fishing town. It is a home to two beautiful churches: the church of St. George, built in 1485, and the church of St. Rocco, built in 1680.

The place has long pebble beaches and a beautiful promenade surrounded by old town walls. One of the most famous and most beautiful beaches in Primošten is the Raduca beach. During the summer months numerous festivities are organized in the town.

MedCruise contact: Gordana Mrcela
info@portauthority-sibenik.hr

Tangier



The five must-see attractions accessible from the port of Tangier are; Medina & Kasbah of Tangier; Hercules Cave & Cape Spartel; Assilah City Tour; Blue City of Chefchaouen; and Tetouan City Tour.

Tetouan is the Historical Capital of Northern Morocco, a welcoming city that extends along the Mediterranean with charming background. It was founded in the 3rd century BC. Echoes of the Roman and Phoenician eras known to exist in

the site of Tamuda colored the region's early days.

Locals affectionately call it 'The Daughter of Granada' because the architecture's got a distinctly Hispanic feel to it. Tetouan Medina (Old Town) has retained its authentic Andalusian soul, which makes this town the most Hispano-Moorish influenced of Moroccan cities. It is easily accessed through its seven gates beautifully engineered. This is a thoroughly atmospheric place to explore its various ethnic quarters- Andalusian, Berber, and Jewish and to experience

Morocco's multicultural history. Every twist and turn down an alleyway bring you to a new picture to a perfect local scene with lots of lovely, slightly crumbling buildings lining the narrow lanes.

2020 is shaping up to be a busy year at port of Tangier, 57 cruise calls are scheduled, bringing in 50,685 passengers.

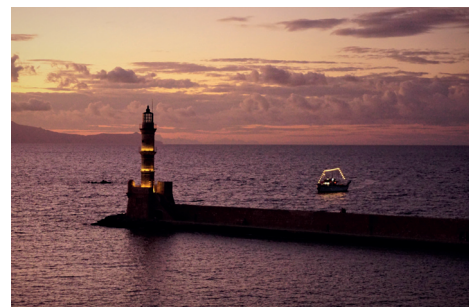
MedCruise contact: Jamil Ouazzani
jamil@tangerport.com

Souda/Chania

Souda Port is the cruise port and sea gateway for Chania but also for the western Crete island. It is ideally located between all major tourism attractions and unique natural/cultural sites. The best place to visit within 2h maximum drive are the Chania's Central Municipality Market in combination with the Old Venetian Harbour, the entrance of the famous Samaria Gorge (the Grand Canyon of Europe), the amazing waterfront and beaches in Falasarna, the Kourmas Lake in combination with Rethymnon City visit and the hidden archaeological gem of Ancient Aptera.

Souda port is due to welcome over 180 cruise calls in 2020, bringing in 400,000 cruise passengers. Ten of these ships will be making their inaugural call at Souda.

MedCruise contact: Stella Manioudaki
stelman@ltnx.gr



Tarragona



and excellent views over the Siurana Reservoir and surrounding valley.

Located in an unassailable position over the river, it needed knights of four counties to conquer it. The castle defended a frontier. If you look at the cliff, you can see why it was not conquered in three hundred years and why the end was so tragic. Abdelazia, the Moorish queen, decided to jump down the cliff with her horse rather than be captured by the Christians.

Visitors can now enjoy a beautiful village of houses and cobbled streets and the rest of the Saracens stronghold, located next to the village. At its feet, a clean and calm water reservoir offers the possibility of practicing any kind of water sports.

Siurana is a popular destination for climber and hikers. Its legendary cliffs are known around the world as a perfect place for such activities.

MedCruise contact: Sandra Domenech
cruises@porttarragona.cat

The five muse-see destinations available from the Catalanian port of Tarragona are the World Heritage City of Tarragona, the UNESCO World Heritage Site Poblet Monastery, the town of Reus, PortAventura World and Ferrari Land, and the village of Siurana.

Siurana is a small village at the top of an escarpment in the Prades Mountains where you will discover a village full of historical relevance

Varna

The five must-see destinations available from the Bulgarian port of Varna are the Archaeological Museum; Balchik; Madara Horseman; the Petrified Forest; and Euxinograd Royal Palace.

Balchik, a short drive from Varna is home to the former summer residence of Queen Marie of Romania, which is surrounded by beautifully landscaped botanical gardens. The Quiet Nest was constructed between 1926 and 1937, during the Romanian rule of the region. The residence is a complex of small and simple buildings, whose architecture is an exquisite blend of Balkan and Oriental style.

The terraced park encompassing the residential complex is full of old trees, creeping shrubs and delicate flowers. Today it is a state-owned botanical garden, with more than 3,000 rare and exotic plants, including more than 200 tree species and a unique collection of about 250 species of large-sized cacti arranged outdoors.

Following your visit, continue to the nearby guesthouse, where the Queen used to entertain her distinguished guests. Enjoy a glass of wine

and canapes in the cosiness and characteristic ambiance of the guest room, before walking to a nearby seafood restaurant for a lunch of fish specialities.

For the year 2020, there are currently 6 cruise ships booked to call at port of Varna, bringing 3,000 passengers.

MedCruise contact: Lyubomir Dobrev
ldobrev@port-varna.bg



Thessaloniki

An eco-tour on offer is a visit to the Axios Delta National Park. It is one of the most important ecosystems in Greece, and ranges across 33,800 hectares. A system of river estuaries, peat bogs, lagoons and salt marshes, an ideal habitat for many species of wildlife. Many bird species such as swans, ducks, egrets and cormorants stay here for the winter. The park has an up-to-date information centre at its entrance where visitors can learn what to look out for.

The five must-see attractions from the Greek port are; Ancient Pella, the city where Alexander

the Great was born and reigned; Vergina, an archaeological site including the Royal Tombs Museum (UNESCO World Heritage site); Mount Athos, the Holy Mountain is home to 20 monasteries (UNESCO World Heritage site); Dion, the most important archaeological site at Mount Olympus, the home of the Greek Gods; Meteora, monasteries stand on the top of a rock formation of vertical cliffs (UNESCO World Heritage site).

MedCruise contact: Evgenia Traikapi
etraikapi@thpa.gr

Valletta

With Malta's diverse and rich history spanning 7,000 years with a succession of foreign conquerors ruling the island from the Phoenicians, the Carthaginians, the Romans, the Byzantines, the Arabs, the Spanish, the French and most recently the British, Malta's culture is peppered with foreign influences but remains unique in its offer.

New events are happening in regenerated historic buildings around Malta: from art exhibitions and visual experiences to music, dance, drama, literature and science, set amidst iconic capital hotspots. No one visit to Malta is the same as the next. The cosmopolitan island bustles with activity but remains true to its roots. Activities can also be custom-created around specific themes.

One set of events of note are the pre-dinner classical music concerts or themed talks organized throughout the year in the Chapel on the Valletta Waterfront dedicated to the Holy Family's Flight to Egypt in collaboration with boutique cruise lines especially for their guests. Located just a five-minute walk from the quays the baroque Chapel is the ideal venue for that personalized, exclusive event for ships staying late in port or overnighing prior to their visit to the sister island of Gozo. Such events can be coupled with a pre or post-event drinks on the historic waterfront.

MedCruise contact: Stephen Xuereb
sxuereb@vallettacruiseport.com



Volos

Meteora is one of the most important geological phenomena in the world, a cluster of huge rocks that create a forest of stone so unbelievable that is hard to conceive. On the rocks rest imposing monasteries that have begun to be built since 1100 AC and are positioned in such a way as to look like they are hanging from the rocks. From the 30 monasteries, only 6 are open to the public today, with thousands of pilgrims visiting them every year. The site of Meteora is listed in the UNESCO World Heritage List. While in Meteora, tourists can also visit; the Temple of the Dormition of the Holy Mary and the Unique Wood Carving School; The Museum of Natural History of Meteora; The Cave of Theopetra, where human footprints dating back to 45,000BC have been found; and the picturesque village of Kastraki, located under the mighty monolithic rocks of Meteora.



40 cruise calls are expected at port of Volos in 2020, a 68% increase of cruise traffic of 2019. Maiden callers to the port will be Phoenix Reisen's Amera and Artania, Oceania Cruise's Sirena and Nautica, Mystic Cruises' World Voyager, and Norwegian Cruise Line's Norwegian Spirit.

MedCruise contact: Socrates Anagnostou
admin@port-volos.gr

Port Authority of Western Sicilian Sea

From April 2020, it will be possible to hire ecobikes, electric scooters and e-moby scooters at the Port of Palermo. Visitors will be able to go for a ride along the ancient Arab, Byzantine and Norman roads, stop and taste fresh fruit at the colourful Capo market or take a tour of the Cala port.

A new tour is 'The Masterpiece of Serpotta and clone of Caravaggio'. The Oratory of San Lorenzo in Palermo is known not only to art history, but also to crime. In October 1969, Caravaggio's masterpiece, 'Nativity with Saints Francis and Lawrence' painted in 1609 was stolen. The story was in newspapers around the world but the theft is still shrouded in mystery, with periodic twists and revelations. Whilst the painting has never been found and the niche where it lived long remained empty, today it houses a clone made with the most advanced technologies.

159 cruise calls bringing in 566,000 passengers are expected to call at port of Palermo in 2020. 42 calls and 55,000 passengers are expected at port of Trapani and 16 calls and 2,700 passengers at port of Porto Empedocle.

MedCruise contact: Daniela Mezzatesta
promotion@portpalermo.it



Venice

The most popular shorex undertaken by guests on ships visiting Venice are; tour of the Doge's Palace & St Marks's Basilica, including Ponte dei Sospiri (Bridge of Sighs); tour of Burano and Murano islands with their lace-producing and glass-blowing traditions; gondola tour; and walking tours exploring some of Venice's lesser-known, but celebrated sites such as the Jewish Ghetto, Campo San Polo, Campo San Rocco, San Basilio and the Greek Orthodox District.

Under an hour from Venice is Padua, a city dating back to the Roman Empire that reached its height during the Italian Renaissance when Giotto, Dante, Donatello, and Petrarca were active

there – a tour includes a visit to the following highlights; the Basilica of St Anthony, a majestic building of Romanesque, Gothic and Baroque styles; the Jewish Ghetto area, one of the best preserved areas of the city; Prato della Valle, one of the largest squares in Europe; the Scrovegni Chapel with Giotto's frescoes; the Bo Palace, the main seat of Padua's 13th century university; the Botanical Garden founded in the 16th Century as the private university garden of curative herbs; the Caffè Pedrocchi, a famous meeting place for students, teachers and literary figures.

MedCruise contact: Galliano Di Marco
g.dimarco@vtp.it

Zadar

Traffic is expected to increase at the port of Zadar for 2020, 157 cruise calls are scheduled bringing in over 200,000 passengers.

The City of Zadar tour encompasses the city itself, full of historical monuments and attractions including the Monument to the Sun and Sea Organ. The tour continues with the rich cultural heritage of Nin, home to the world's smallest cathedral and museums containing ancient ship remains. You'll also visit the Royal Vineyards and taste award-winning wine. After your city visit, you'll head to the Royal Vineyards, which are planted on land once owned by Croatian king Petar Kresimir IV. Here, you will learn about the winemaking process and taste some of Croatia's finest wines.

The National Park Krka Waterfalls are the most beautiful travertine waterfalls in Europe! The magic world of the Krka River which runs over cliffs and falls in 46mtr of profundity! Take some time to make a relaxing walk along the river, enjoy the splendid nature and water. You may also visit a small museum and an old mill. In the summer time you can enjoy the refreshing bath in the river or take wonderful pictures with your camera.

MedCruise contact: Djoni Stambuk
dstambuk@port-authority-zadar.hr



Port facilities & infrastructure

We asked MedCruise member ports and destinations if they were investing in new port/destination facilities and when they would be ready?

Heraklion

Port of Heraklion is investing in the rebuilding of the Passenger Station, which is due to be ready by 2021. New fenders to improve port infrastructure will be completed by the end of March 2020.

Kyriaki Kampana, Head of Planning & Development Department, Port of Heraklion

Barcelona

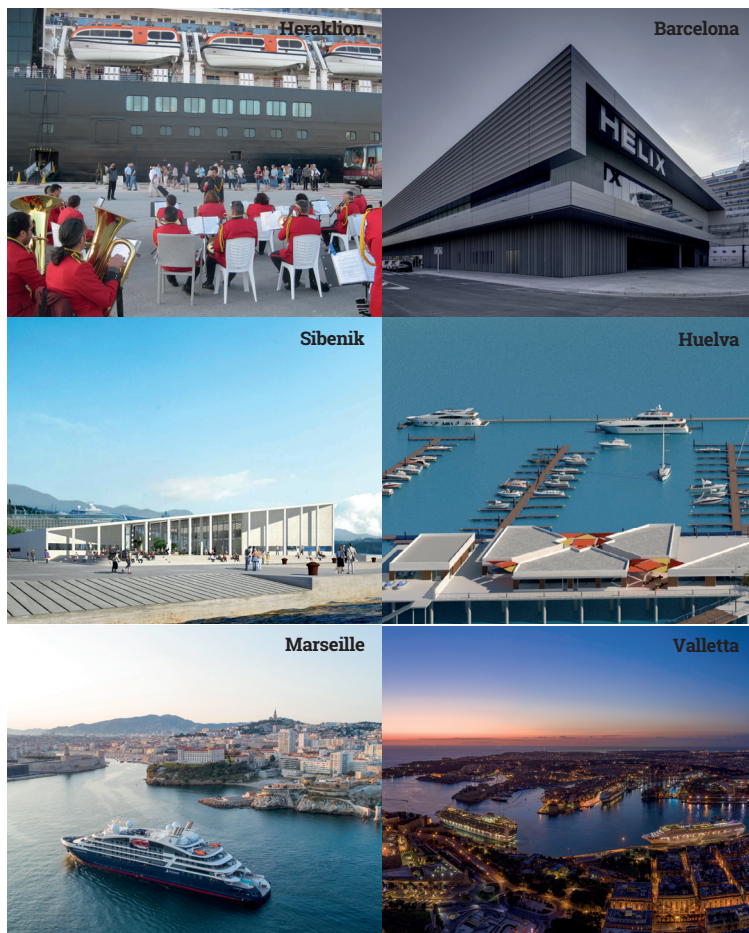
Port of Barcelona are working on 2 new private terminals in the Adossat Quay, one for the RCCL group and another one for MSC. The port has recently completed work of Carnival's newest cruise terminal, Helix and the port is working towards improving traffic flow on the Adossat Quay to guarantee more efficient passenger mobility.

Mar Pérez, Head of Cruise Department, Port of Barcelona

Sibenik

Port of Sibenik's Maritime Passenger Terminal Project which includes the construction of a new two-storey passenger terminal building and garage should be finished by the end of 2021.

Gordana Mrčela, Marketing Specialist, Port of Sibenik Authority



Huelva

Port of Huelva have several infrastructure projects in progress such as the Marina Port of Levante Wharf that will be an outstanding leisure zone where citizens and passengers will be able to enjoy from its shops, restaurants and many other amenities.

Jennifer García Moreno, Technical and Commercial Department, Autoridad Portuaria de Huelva

Marseille

Works are on process in Terminal C to create a new terminal for turnaround.

Marseille is to install shore-to-ship electricity connections for ferries. Shore-to-ship power will be available for cruise ships at berth at the Marseille Provence Cruise Terminal by 2025.

With two LNG terminals on the port area, the port has set up the first natural gas station for trucks in the region. LNG ships are calling Marseille and the port will be able to offer its customers an LNG refueling barge by 2022.

Ophélie Tollari, Promotion and Events Manager, Marseille Provence Cruise Club

Valletta

Works will be starting on Quays Pinto 4-5 in November 2020. With this development Valletta Cruise Port is looking at a more attractive and secure operation, without the need for the spacer barges currently in use on these quays.

Furthermore, Valletta Cruise Port is supporting a project by Infrastructure Malta and Transport Malta whereby Euro 49.9 million are being invested in a shore-side electricity project. The first of this two-phased project includes a €37 million investment to provide shore power on the five main cruise ship quays of the Grand Harbour by end 2023.

Stephen Xuereb, CEO, Valletta Cruise Port & COO, Global Ports Holding

Livorno

The Port Plan foresees huge investments more than doubling the present spaces and piers, making available four dedicated berths and new Terminals at Calata Alto Fondale and Calata Orlando, suitable for mega ships full turn-arounds. The 4 fully equipped berths will be available in the next five years.

Serena Veroni, Marketing, Porto di Livorno 2000

Central Adriatic Port Authority - Port of Ancona

In 2019, the Central Adriatic Ports Authority started the project of building a new cruise terminal on a dedicated quay in the port of Ancona. The quay will be 350mtr long, with a draught of nearly 10 mtr.

The new terminal area will be nearly 2.400sq mtr, providing services for passengers reaching the port of Ancona.

Silvia Renda, Development, Promotion, Statistics, Communication and EU Projects, Central Adriatic Port Authority



Istanbul

The new terminal is planned to be built underground over 29,000sq mtr for domestic and foreign tourists to continue their journey without any interruption. Galataport Istanbul Cruise Port, which has an underground tour bus parking lot under the ground on -1 level and car park of about 2,300 vehicles, will also make an important contribution to the parking problem of the district.

Galataport is designed to be the new gastronomy centre of Istanbul. IT will encompass nearly 250 retail and f&b units, where nearly 35% will be dedicated to culinary businesses.

Başak Gürtuna, Marketing and Communication Manager, Galataport Istanbul

Odessa

Odessa Sea Port Authority modernised the Marine station by refurbishing the inner premises. Plans are being implemented for the reconstruction of the concert and exhibition hall and the square in front of the Passenger Terminal building. Completion of reconstruction will be the end of 2020.

A new terminal and runway are under construction at Odessa Airport. The new terminal will be 26,000sq mtr and feature 16 gates. The throughput capacity will be 4 million passengers. The new runway will be 2,800mtr and will be operational in June 2020. These works will increase the number of airlines flying to Odessa, and throughput passenger capacity.

Julia Strikh, Head of Tourism and Eurointegration Department, Odessa Sea Port Authority

Haifa

With the cargo terminals moving to the eastern part of the port and the increased cruise calls, Haifa Port management approved the transformation of 450mtr of cargo terminal into a cruise terminal with the ability to accommodate the largest cruise ships. The new pier will allow the port to accommodate at least four ships and will be at the foot of the magnificent Baha'i Gardens, close to downtown Haifa.

Zohar Rom, Head of Cruises, Tourism, Marcom & PR, Haifa Port Company

Burgas

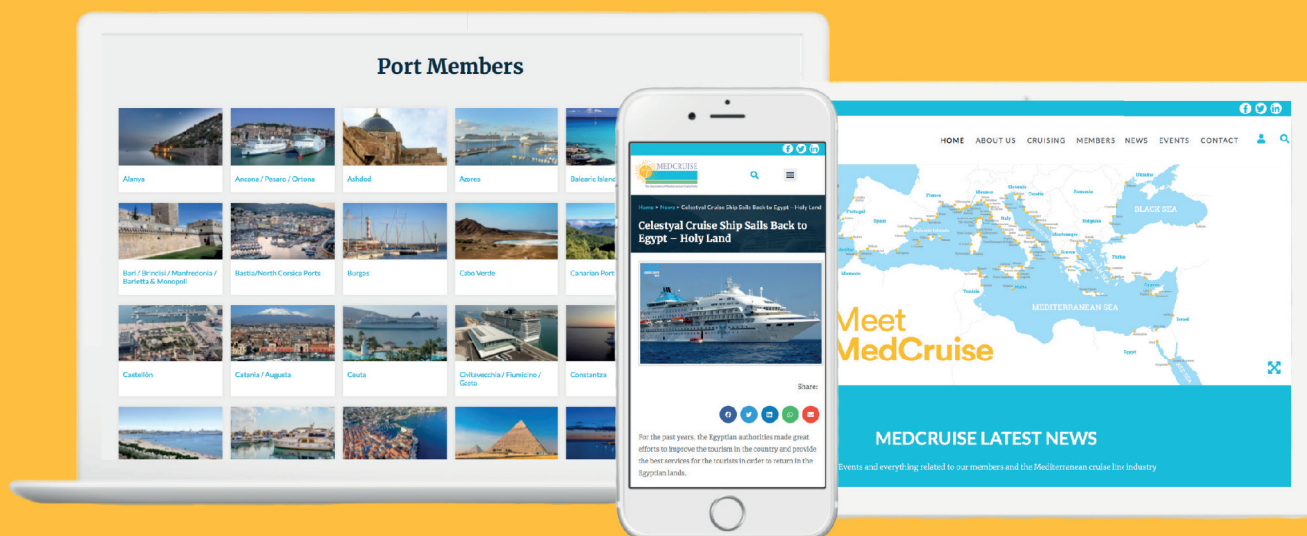
It is planned to set up a public-commercial and entertainment area, a central square with an open stage, a marina with a yacht club, a floating restaurant and other service activities in the city centre.

The construction of a modern Children's Science Center in the well-developed Public Access Area of the port of Burgas will be completed by the mid-2020. It is located on the 1st and 2nd floors of the Maritime Station building

In front of the Maritime Station, a project for "Planetarium" is on way to be implemented by the mid-2020. The planetarium will be a spherical metal structure with a modern architectural design and an accessible environment for people with disabilities.

Emil Koev, Expert Marketing & Quality Assurance, Port Burgas JSC

Meet MedCruise



Meet Our Team

Left to Right

Jordi Caballé
Secretary General

Anja Lohrum
Secretariat Advisor

Sara Valls
Secretariat Advisor

Airam Diaz Pastor
MedCruise President



MedCruise Association
Ed. Puerto-Ciudad,
5-B Santa Cruz de Tenerife

+34 922 53 33 83
secretariat@medcruise.com

www.medcruise.com
www.medcruise.cn