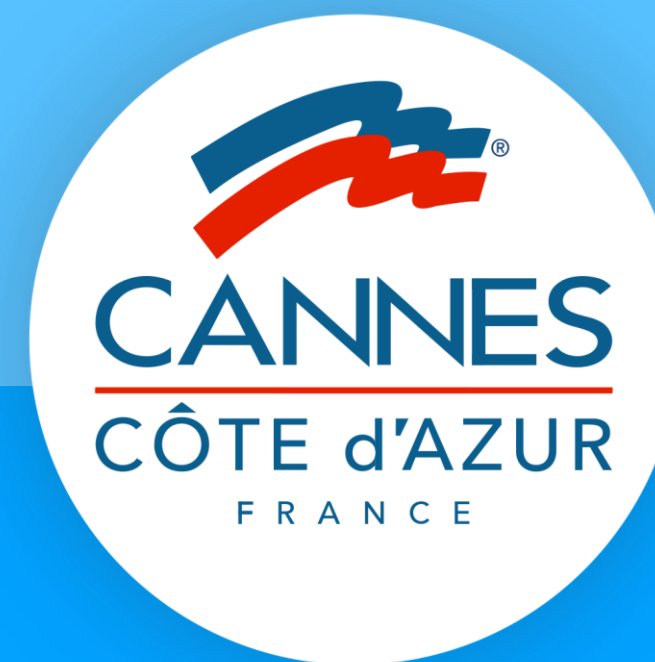
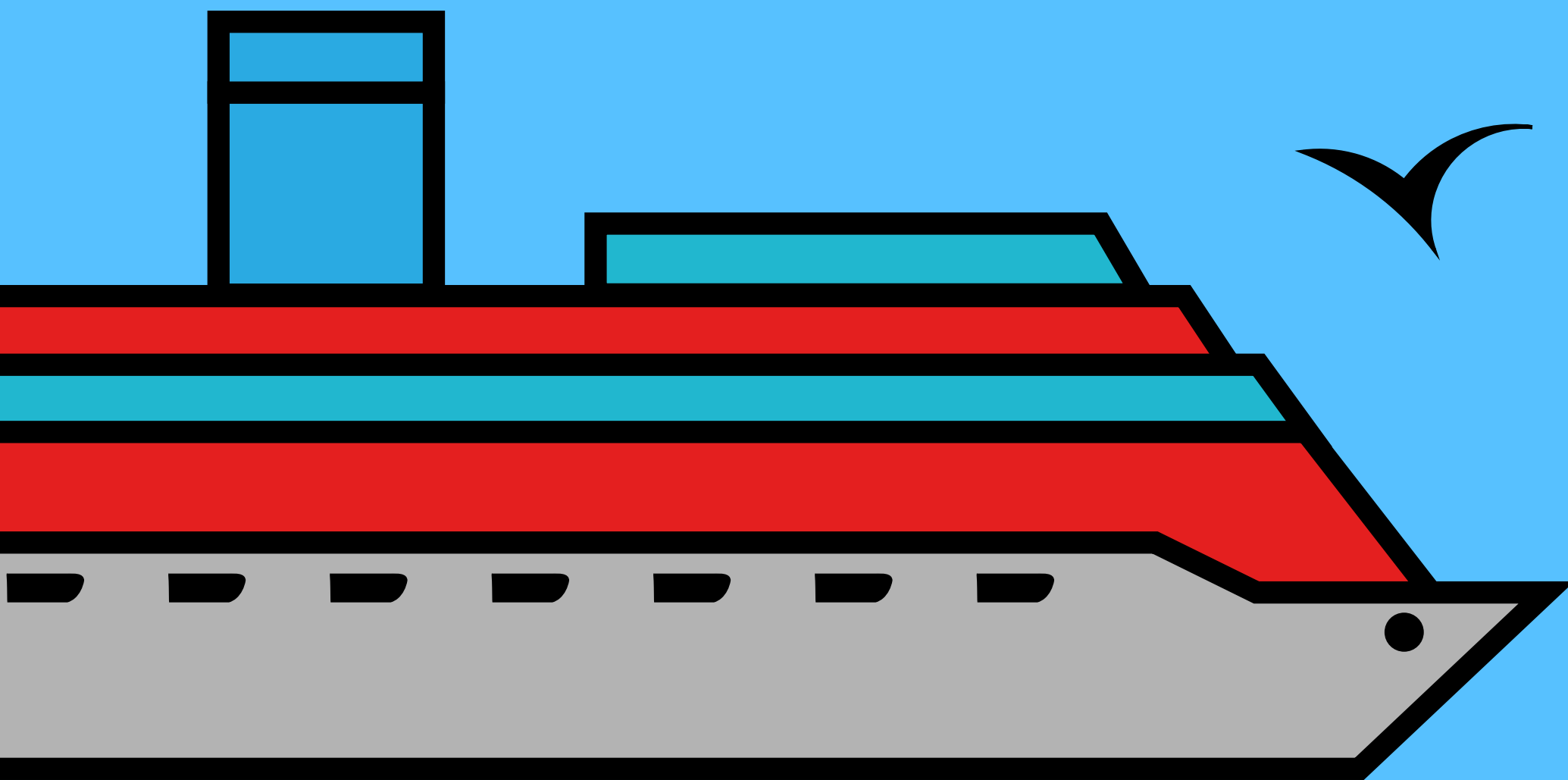


Commitments for sustainable Cruise operations in the bay of Cannes



PORT DE CANNES

Groupe

 **CCI NICE CÔTE D'AZUR**

Old Port Of Cannes
Éric Barrat & Jean Marc Bérard

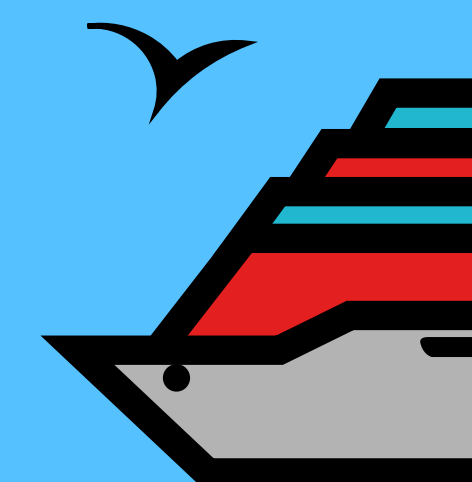


PORT DE CANNES

Groupe

CCI NICE CÔTE D'AZUR

A unique initiative in the
Mediterranean, in line with the city
of Cannes's environmental policy



INCENTIVE

SCALABLE

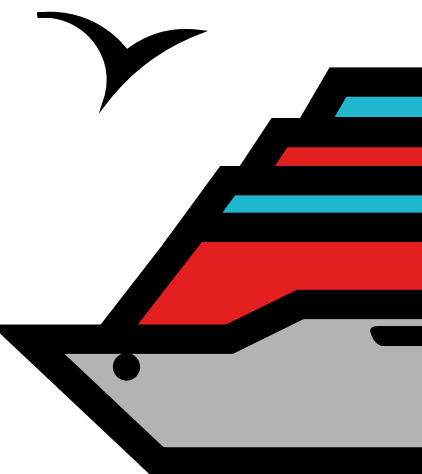
CONSTRAINING

STRINGENT

AN INNOVATIVE
APPROACH

GLOBAL

AT THE INITIATIVE OF A
COMMUNITY



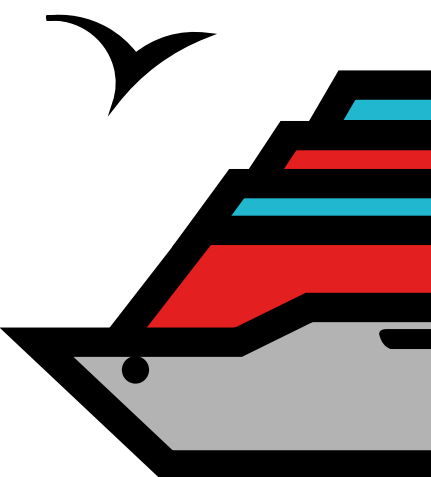
1 REDUCTION OF POLLUTANT
EMISSIONS IN THE AIR

2 REDUCTION OF SEA
POLLUTION

3 PROTECTION OF
BIODIVERSITY



4 INVOLVEMENT OF THE
ENTIRE TOURIST CHAIN





Mairie de Cannes

PORT DE CANNES

Groupe

CCI NICE CÔTE D'AZUR

Commitments for sustainable cruise operations in the bay of Cannes

PREAMBULE

As part of their environmental policy, the Municipality and the CCI Nice Côte d'Azur of Cannes are committed to preserving the future of the Bay of Cannes and its exceptional ecosystem.

The Port of Cannes welcomes every year many cruise ships that participate in the economic success of the city, its living area and more widely throughout the Côte d'Azur. To preserve the destination, protect the environment and enhance the bay of Cannes, the Municipality of Cannes and the Old Port invite cruise operators to partake in more ecologically sustainable practices by implementing more environmentally-friendly measures within their operations.

By signing this agreement, cruise operators commit themselves to the Municipality of Cannes and the CCI for environmentally friendly stopovers, beyond the national and international regulations.

FOUR ENVIRONMENTAL COMMITMENTS FOR CRUISE LINES TO CANNES

REDUCTION OF POLLUTANT EMISSIONS IN THE AIR

Cruise ships operating in the bay of Cannes commit:

- **To using 0.1% sulfur fuel** as soon as they enter the mandatory pilotage zone and for the duration of the stopover at anchor, alternatively, to use a scrubber or any equivalent system. Previously, ships were required to use 0.1% sulfur fuel when anchored and their propulsion engines stopped.
- **To a strict ban on the incineration of on-board waste** as soon as they enter the mandatory pilotage area for the duration of the stopover.
- **To set up an environmentally friendly tendering service**, with the systematic use of 0.1% sulfur fuel

REDUCTION OF POLLUTION AT SEA

Cruise ships operating in the bay of Cannes commit to emit:

- **Zero rejection of treated** or untreated water in pilotage and berthing areas.
- **Zero discharge of water from the open-loop scrubber system**, if applicable

PROTECTION OF BIODIVERSITY

Cruise ships operating in the bay of Cannes commit to:

- **Bypass posidonia meadows** during manoeuvres and anchoring
- **Observe the compulsory pilotage and anchorage area** as directed by the pilot.

IMPLEMENTATION OF A GLOBALIZED ENVIRONMENTAL APPROACH

Cruise ships operating in the bay of Cannes commit to:

- **Promote an environment-friendly** approach to incoming agents and coach operators;
- **Work with bus tour operators that use sustainable fuel sources** of type « Euro6 », and if existing electric, gas or hybrid buses;
- **Limit the discharge of pollutant emissions on the ground** by asking the operators to start the engines only when the passengers start entering the bus.

IN ORDER TO PROMOTE THE ECO-RESPONSIBLE
BEHAVIOR OF CRUISE OPERATORS COMMITTING TO THE
CHARTER, A REBATE OF 0.20€ PER PASSENGER WILL
BE GRANTED BY THE PORT MANAGER TO ALL SHIPS
CALLING INTO THE PORT OF CANNES.

BONUS AND CONTROL

This environmental charter reinforces the complimentary Green Award, led by the FRCC (French Riviera Cruise Club) since 2007. It will be reviewed and updated each year.

It is applied in an incentive and rigorous way by:

- **Establishment of a financial bonus for committed companies**
A rebate of 0.20€ per passenger/stop will be applied to committed cruise operators. The rebate will be granted each year at the end of the cruise season in Cannes.
- **Strict control of the respect of the commitments**
Random visits will be made at least once a year per ship. The ship is obliged to facilitate access to documents that provide proof that the commitment stated in the charter are complied with (eg : bridge registration, tender checks, etc.)
Control visits will be concluded by the port authority, the port of Cannes and the pilot.

Cruise ships

The Mayor

President of the CCI

David USNARD

Jean-Pierre SAVARINO



PORT DE CANNES

Groupe

CCI NICE CÔTE D'AZUR



100%

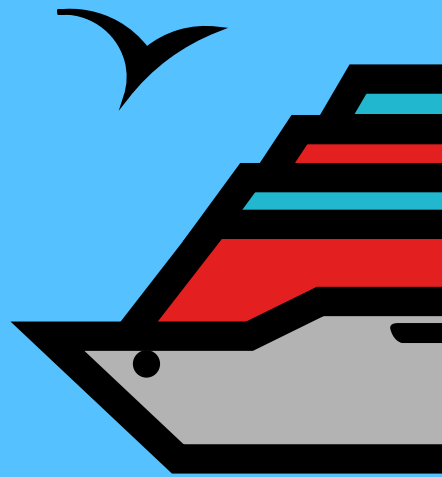
OF CRUISE LINES
COMING TO CANNES
SIGNED
THE CHARTER



Signature of the 13th Cruise Company: the MSC Group



PORT DE CANNES



What's next for the Commitments for sustainable Cruise Operations in the bay of Cannes ? Involving the other actors of the tourist chain like,

Tendering
Coach Operator
Shorex Operator
Etc.

To go further :
[www.leportdecannes.com/engagements/
commerce.cannes@cote-azur.cci.fr](http://www.leportdecannes.com/engagements/commerce.cannes@cote-azur.cci.fr)
Direction-Ports@cote-azur.cci.fr



PORT DE CANNES

Groupe



CCI NICE CÔTE D'AZUR

